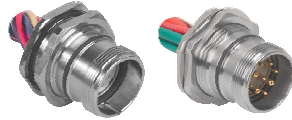
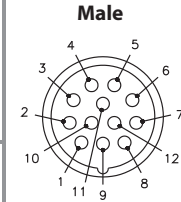
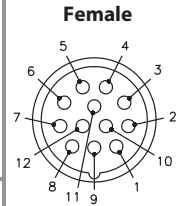


12-Pin Receptacles, Rear Mount

- For use with Junction Box Home Run Cables
- IEC IP67 Protection
- 300 V, 6 A



| Housing Style | Female Part Number | Male Part Number | Features | Pinout |
|--|--------------------|-------------------|---|--|
| <p>CS(K)FD</p> <p>Typical panel cutout is 25.4 x 24.3x25.4 mm</p> | CKFD 12-7-* | CSFD 12-7-* | Nickel plated brass, 7x18 AWG, 105°C, 4-port, 1 signal per port | <ol style="list-style-type: none"> BN BU WH GN YE GY GN/YE |
| | CKFD 12-9-* | CSFD 12-9-* | Nickel plated brass, 9x18 AWG, 105°C, 6-port, 1 signal per port | <ol style="list-style-type: none"> BN BU WH GN YE PK RD GN/YE |
| | CKFD 12-11-* | CSFD 12-11-* | Nickel plated brass,, 11x18 AWG, 105°C, 8-port, 1 signal per port | <ol style="list-style-type: none"> BN BU WH GN YE GY PK RD BK VT GN/YE |
| | CKFD 12-12-* | CSFD 12-12-* | Nickel plated brass, 12x18 AWG, 105°C, 8-port, 1 signal per port | <ol style="list-style-type: none"> BN OG BU WH GN YE GY PK RD BK VT GN/YE |
| | CKFD 12-12-*/S817 | CSFD 12-12-*/S817 | Nickel plated brass, 12x18 AWG, 105°C, 8-port, 1 signal per port | <ol style="list-style-type: none"> BN BU WH GN/YE OG YE GY PK RD BN/WH BU/WH GN/WH |



* Length in meters. Standard lead length is 1 meter. Consult factory for other lengths. To specify PVC jacketed cable, add "/S717" to the end of the part number.