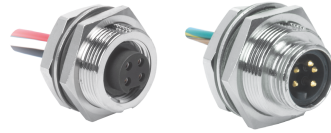


5 and 6-Wire Receptacles, Back Panel Mount

- NEMA 1, 3, 4, 6P
- IEC IP68 Protection
- 600 V



Housing Style	Female Part Number	Male Part Number	Features	Pinout	
<p><b>RKFP ..</b></p> <p><b>RKFP Cutout</b></p> <p><b>Recommended maximum panel thickness is 6.4 mm.</b></p>	RKFP 50-*M	RSFP 50-*M	5x18 AWG, 105°C, 9 A, M30x1.5 Threads, Standard Duty	<ol style="list-style-type: none"> <li>1. BK</li> <li>2. BU</li> <li>3. GN/YE</li> <li>4. BN</li> <li>5. WH</li> </ol> <p><b>Female</b></p>	
	RKFP 511-*M	RSFP 511-*M	5x18 AWG, 105°C, 9 A, Automotive Color Code, M30x1.5 Threads	<ol style="list-style-type: none"> <li>1. RD/WH</li> <li>2. RD/BU</li> <li>3. GN</li> <li>4. RD/OG</li> <li>5. RD/BK</li> </ol>	
	RKFP 55-*M	RSFP 55-*M	5x16 AWG, 105°C, 10 A, Automotive Color Code, M30x1.5 Threads	<p><b>Male</b></p>	
	RKFP 56-*M	RSFP 56-*M	5x16 AWG, 105°C, 10 A, M30x1.5 Threads, Heavy Duty	<ol style="list-style-type: none"> <li>1. WH</li> <li>2. RD</li> <li>3. GN</li> <li>4. OG</li> <li>5. BK</li> </ol>	
	<p><b>RSFP ..</b></p> <p><b>RSFP Cutout</b></p> <p><b>Recommended maximum panel thickness is 6.4 mm.</b></p>	RKFP 61-*M	RSFP 61-*M	6x18 AWG, 105°C, 8 A, M30x1.5 Threads, Standard Duty	<ol style="list-style-type: none"> <li>1. GN</li> <li>2. WH</li> <li>3. BU</li> <li>4. GY</li> <li>5. YE</li> <li>6. BN</li> </ol> <p><b>Female</b></p>
		RKFP 66-*M	RSFP 66-*M	6x16 AWG 105°C, 8 A, M30x1.5 Threads, Heavy Duty	<ol style="list-style-type: none"> <li>1. WH</li> <li>2. RD</li> <li>3. GN</li> <li>4. OG</li> <li>5. BK</li> <li>6. BU</li> </ol> <p><b>Male</b></p>
	RKFP 68-*M	RSFP 68-*M	6x18 AWG 105°C, 8 A, M30x1.5 Threads, Heavy Duty		

Standard lead length is 0.3 Meters. Consult factory for other lengths.

\*\* Standard housing material is nickel plated brass.. "RSFP .."; "RSFPV .." indicates stainless steel housing.

To specify PVC jacketed cable, add "/S717" to the end of the part number.