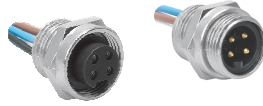


4-Wire Receptacles, Front Mount, 1/2-14 NPT Threads

- NEMA 1, 3, 4, 6P
- IEC IP67 Protection



Housing Style	Female Part Number	Male Part Number	Features	Pinout
<p><b>RKF ..NPT</b></p> <p>Typical panel cutout 22.5 mm</p>	RKF 40-*M/NPT	RSF 40-*M/NPT	4x18 AWG, 105°C, 9 A, standard duty	<p><b>Female</b></p> <p><b>Male</b></p> <p>1. BN 2. WH 3. BU 4. BK</p>
<p><b>RKF ..NPT</b></p> <p>Typical panel cutout is 22.5 mm</p>	RKF 46-*M/NPT	RSF 46-*M/NPT	4x16 AWG, 105°C, 10 A, heavy duty	<p><b>Female</b></p> <p><b>Male</b></p> <p>1. BK 2. WH 3. RD 4. GN</p>
<p><b>RKF ..NPT</b></p> <p>Typical panel cutout is 22.5 mm</p>	RKF 48-*M/NPT	RSF 48-*M/NPT	4x18 AWG, 105°C, 600 V, 9 A, heavy duty	<p><b>Female</b></p> <p><b>Male</b></p>

Standard lead length is 0.3 Meters. Consult factory for other lengths.

\*\* Standard housing material is nickel plated brass.. "RSF .."; "RSFV .." indicates stainless steel housing.

For locknuts to be included, add "W/LN" to the end of the part number.

To specify PVC jacketed cable, add "/S717" to the end of the part number.