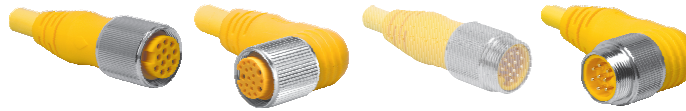


## 9 and 10-Wire Cordsets, C-Size Heavy Duty

- NEMA 1, 3, 4, 6P
- IEC IP68 Protection
- 600 VAC/DC, 7 A



| Connector Style        | Female Part Number                   | Male Part Number                     | Features  | Pinout                                  |   |
|------------------------|--------------------------------------|--------------------------------------|---|---|---|
| <p><b>RKM ..**</b></p> | RKM 96-*M<br>WKM 96-*M               | RSM 96-*M<br>WSM 96-*M               | ITC/PLTC PVC Yellow, 9x16 AWG, 105°C, 12.5 mm OD, Cable #RF51033-*M†, flexlife*                                   | <p><b>Female</b></p> <p><b>Male</b></p> |   |
|                        | RKM 96-*M/S90<br>WKM 96-*M/S90       | RSM 96-*M/S90<br>WSM 96-*M/S90       | ITC/PLTC TPU Yellow, 9x16 AWG, 105°C, 12.5 mm OD, Cable #RF51140-*M†, Cut/abrasion Immune                         |   |   |
| <p><b>WKM ..**</b></p> | RKM 96-*M/S101<br>WKM 96-*M/S101     | RSM 96-*M/S101<br>WSM 96-*M/S101     | AWM TPE Yellow, 9x16 AWG, 105°C, 10.5 mm OD, Cable #RF51051-*M†, flexlife-20, High flex - over 20 million cycles  |   |   |
|                        | RKM 96-*M/S1587<br>WKM 96-*M/S1587   | RSM 96-*M/S1587<br>WSM 96-*M/S1587   | AWM TPE Yellow, 9x16 AWG, 105°C, 11.2 mm OD, Cable #RF51013-*M†, weldlife, Weld flash Immune                      |   |   |
| <p><b>RSM ..**</b></p> | RKM 106-*M<br>WKM 106-*M             | RSM 106-*M<br>WSM 106-*M             | ITC/PLTC PVC Yellow, 10x16 AWG, 105°C, 12.5 mm OD, Cable #RF51034-*M†, flexlife                                   |   | <p><b>Female</b></p> <p><b>Male</b></p> |
|                        | RKM 106-*M/S90<br>WKM 106-*M/S90     | RSM 106-*M/S90<br>WSM 106-*M/S90     | ITC/PLTC Yellow, 10x16 AWG, 105°C, 12.5 mm OD, Cable #RF51141-*M†, Cut/abrasion Immune                            |   |   |
| <p><b>WSM ..**</b></p> | RKM 106-*M/S101<br>WKM 106-*M/S101   | RSM 106-*M/S101<br>WSM 106-*M/S101   | AWM TPE Yellow, 10x16 AWG, 105°C, 10.5 mm OD, Cable #RF51052-*M†, flexlife-20, High flex - over 20 million cycles |   |   |
|                        | RKM 106-*M/S1587<br>WKM 106-*M/S1587 | RSM 106-*M/S1587<br>WSM 106-*M/S1587 | AWM TPE Yellow, 10x16 AWG, 105°C, 12.5 mm OD, Cable #RF51015-*M† weldlife, Weld flash Immune                      |   |   |

\* Length in Meters. Standard cable lengths are 2, 4, 5, 6, 8 and 10 meters. Consult factory for other lengths.

\*\* Standard coupling nut material is nickel plated brass "RKM .."; "RKV .." indicates stainless steel.

† See Section N for **reelfast**® cable information.