

Sensors

Accessories

firefast™ Connector Protective Sleeving

Part Number	ID Number
FF 1/2INCH BLACK (10/BAG)	A0076
FF 3/4INCH BLACK (10/BAG)	A0075
FF 1/2INCH BLACK 50 FOOT ROLL	A0078
FF 3/4INCH BLACK 50 FOOT ROLL	A0079

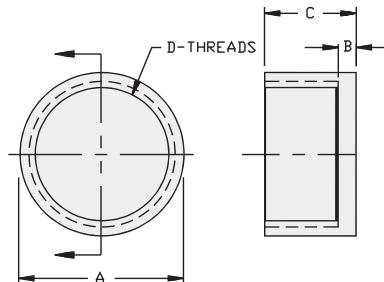


Material: Acryl-coated braided fiberglass
 * For viton coated change FF to FFV
 ** For additional sizes contact factory

PTFE Covers

Part Number	ID Number	Barrel Diameter	Dimensions			
			A	B	C	D
CAP 08-PTFE	A3055-1	8 mm Embeddable	.375 [9.5]	0.03 [0.7]	.437 [11.1]	M8x1
CAP 12-PTFE	M69662 00	12 mm Embeddable	0.63 [16.0]	0.03 [0.7]	0.63 [16.0]	M12x1
CAP 18N-PTFE	A3056	18 mm Nonembeddable	0.87 [22.0]	0.04 [1.0]	0.79 [20.0]	M18x1
CAP 18-PTFE	A3055	18 mm Embeddable	0.87 [22.0]	0.04 [1.0]	0.35 [9.0]	M18x1
CAP 30N-PTFE	A3058	30 mm Nonembeddable	1.34 [34.0]	0.05 [1.2]	1.14 [29.0]	M30x1.5
CAP 30-PTFE	A3057	30 mm Embeddable	1.34 [34.0]	0.05 [1.2]	0.35 [9.0]	M30x1.5
CAP 47-PTFE	A3060	47 mm Embeddable	2.20 [55.8]	0.06 [1.6]	0.38 [9.7]	PG 36

Material: PTFE
 Inches [mm]



For use with metal barrel sensors.