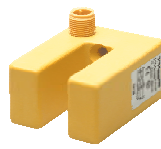
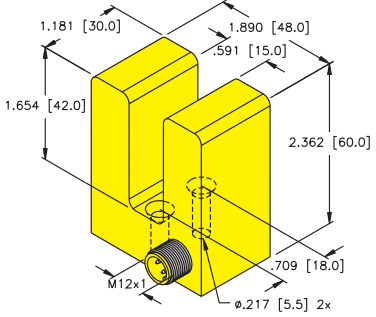
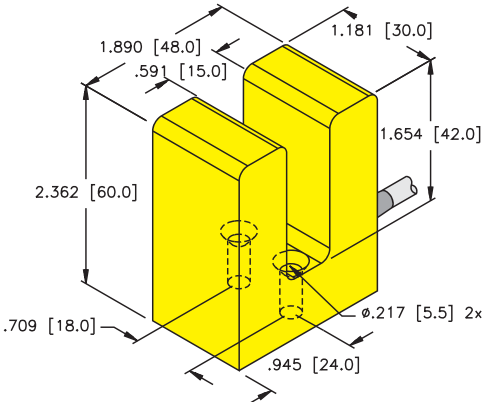


# Inductive Slot Sensors



Housing Style	Part Number	ID Number	Features	Sensing Range (mm)	Output
<b>30 mm - Slot Sensor, eurofast® Connector</b> 	Si15-K30-AN6X-H1141	M1605107		15	3-Wire DC NPN
	Si15-K30-AP6X-H1141	M1605007		15	3-Wire DC PNP
<b>30 mm - Slot Sensor, Potted-In Cable</b> 	Si15-K30-AN6	M1605002		15	3-Wire DC NPN
	Si15-K30-AN6X	M1605003		15	
	Si15-K30-AP6	M1605000		15	3-Wire DC PNP
	Si15-K30-AP6X	M1605001		15	
	Si15-K30-VP6	M1605030	<b>Comp. Outputs</b>	15	4-Wire DC PNP
	Si15-K30-AZ3	M1306900		15	2-Wire AC/DC
Si15-K30-Y1	M1007600		15	2-Wire DC NAMUR	

For detailed sensor specifications see Section M.  
 Normally Closed versions available upon request, consult factory.



Voltage	Switching Freq. (Hz)	Operating Current (mA)	Operating Temp. (°C)	Protection	Housing	Face	End Cap	Power LED	Output LED	Mating Cord, Cable Length / Jacket	Wiring Diagram #	Wiring Diagrams
10-30 VDC	500	≤200	-25 to +70	IP 67	PBT	PBT	N/A	N/A	YE	RK 4T-*	1	<p><b>Diagram 1</b></p>
10-30 VDC	500	≤200	-25 to +70	IP 67	PBT	PBT	N/A	N/A	YE	RK 4T-*	2	<p><b>Diagram 2</b></p>
10-30 VDC	500	≤200	-25 to +70	IP 67	PBT	PBT	N/A	N/A	N/A	2M/PVC	3	<p><b>Diagram 3</b></p>
	500	≤200	-25 to +70	IP 67	PBT	PBT	N/A	N/A	YE	2M/PVC	3	
10-30 VDC	500	≤200	-25 to +70	IP 67	PBT	PBT	N/A	N/A	N/A	2M/PVC	4	<p><b>Diagram 4</b></p>
	500	≤200	-25 to +70	IP 67	PBT	PBT	N/A	N/A	YE	2M/PVC	4	
10-30 VDC	350	≤200	-25 to +70	IP 67	PBT	PBT	N/A	N/A	N/A	2M/PVC	5	<p><b>Diagram 5</b></p>
20-250 VAC 10-300 VDC	20	≤400/300	-25 to +70	IP 67	PBT	PBT	N/A	N/A	N/A	2M/PVC	7	<p><b>Diagram 6</b></p>
5-30 VDC	500	Remote	-25 to +70	IP 67	PBT	PBT	N/A	N/A	N/A	2M/PVC	6	<p><b>Diagram 7</b></p>
												<p><b>Diagram 7</b></p>

For material descriptions see page M36.