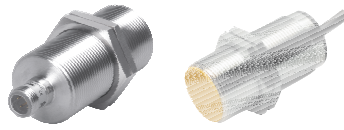


# Inductive Mobile Equipment Sensors



Housing Style	Part Number	ID Number	Features	Sensing Range (mm)	Output
<b>30 mm - Embeddable, eurofast® Connection</b> 	Bi15-EM30-AN45XLD-H1141	T1584024	<ul style="list-style-type: none"> <li>• Load Dump Protection</li> <li>• Shock Resistant</li> <li>• EMC Immunity</li> <li>• Extended Temperature Range</li> <li>• Broader Operating Voltage</li> <li>• Improved Sealing and Environmental Protection</li> <li>• Longer Sensing Range</li> </ul>	15	DC 3-Wire NPN
	Bi15-EM30-AP45XLD-H1141	T1584020		15	DC 3-Wire PNP
<b>30 mm - Embeddable, Partial Threading, Potted-In Cable</b> 	Bi15-EM30-AN45XLD	T1584022		15	DC 3-Wire NPN
	Bi15-EM30-AP45XLD	T1584021		15	DC 3-Wire PNP

For detailed sensor specifications see Section M.  
Normally Closed versions available upon request, consult factory.



Voltage	Switching Freq. (Hz)	Operating Current (mA)	Operating Temp. (°C)	Protection	Housing	Face	Power LED	Output LED	Mating Cord, Cable Length/ Jacket	Wiring Diagram #	Wiring Diagrams
8.4-65 VDC	500	≤200	-40 to +85	IP 68, IP 69K	SS	PA12	N/A	YE	RK 4T-*/S90	3	<p><b>Diagram 1</b></p>
8.4-65 VDC	500	≤200	-40 to +85	IP 68, IP 69K	SS	PA12	N/A	YE	RK 4T-*/S90	4	<p><b>Diagram 2</b></p>
8.4-65 VDC	500	≤200	-40 to +85	IP 68, IP 69K	SS	PA12	N/A	YE	2M/TPE	1	<p><b>Diagram 3</b></p>
8.4-65 VDC	500	≤200	-40 to +85	IP 68, IP 69K	SS	PA12	N/A	YE	2M/TPE	2	<p><b>Diagram 4</b></p>

Mobile Equipment

Harsh Duty

\* Length in meters.

For material descriptions see page M36.