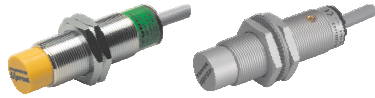


Inductive Sensors



Housing Style	Part Number	ID Number	Features	Sensing Range (mm)	Output
18 mm - Nonembeddable, Partial Threading, Potted-In Cable 	Ni 8-M18-AD4X	T4411200		8	2-Wire DC
	Ni 14-M18-AD4X	T4417235	Extended Range	14	
	Ni 12U-M18-AN6X	M1645120	Uprox	12	3-Wire DC NPN
	Ni 12U-EM18-AN6X	M1645320	Uprox	12	
	Ni 14-M18-AN6X	T4611411	Extended Range	14	
	Ni 12U-EM18-AP6X	M1645300	Uprox	12	3-Wire DC PNP
	Ni 12U-M18-AP6X	M1645100	Uprox	12	
	Ni 14-M18-AP6X	T4611401	Extended Range	14	
	Ni 8-M18-VN4X	T1571200	Comp. Output	8	4-Wire DC NPN
	Ni 14-M18-VN4X	T4590600	Extended Range	14	
	Ni 8-M18-VP4X	T1561200	Comp. Output	8	4-Wire DC PNP
	Ni 14-M18-VP4X	T4590601	Extended Range	14	
		Ni 12U-M18-ADZ30X2	M4282410	Uprox	12
18 mm - Nonembeddable, Partial Threading, Potted-In Cable, PTFE Coated 	Ni 12U-MT18-ADZ30X2	M4209420	Uprox	12	2-Wire AC/DC Short-Circuit Protected

For detailed sensor specifications see Section M.
 Normally Closed versions available upon request, consult factory.



Output	Switching Freq. (Hz)	Operating Current (mA)	Operating Temp. (°C)	Protection	Housing	Face	End Cap	Power LED	Output LED	Cable Length / Cable Mat.	Wiring Diagram #	Wiring Diagrams
10-65 VDC	500	≤100	-25 to +70	IP 67	CPB	PA 12	EPTR	N/A	YE	2M/PVC	1	Diagram 1
	500	≤100	-25 to +70	IP 67	CPB	PA 12	EPTR	N/A	YE	2M/PVC	1	
10-30 VDC	2000	≤200	-30 to +85	IP 67	CPB	PA 12	EPTR	N/A	YE	2M/PVC	2	Diagram 2
	2000	≤200	-30 to +85	IP 68	SS	PA 12	EPTR	N/A	YE	2M/PVC	2	
	500	≤200	-25 to +70	IP 67	CPB	PA 12	EPTR	N/A	YE	2M/PVC	2	
10-30 VDC	2000	≤200	-30 to +85	IP 67	SS	PA 12	EPTR	N/A	YE	2M/PVC	3	Diagram 3
	2000	≤200	-30 to +85	IP 67	CPB	PA 12	EPTR	N/A	YE	2M/PVC	3	
	500	≤200	-25 to +70	IP 67	CPB	PA 12	EPTR	N/A	YE	2M/PVC	3	
10-65 VDC	1000	≤200	-25 to +70	IP 67	CPB	PA 12	EPTR	N/A	YE	2M/PVC	4	Diagram 4
	1000	≤200	-25 to +70	IP 67	CPB	PA 12	EPTR	N/A	YE	2M/PVC	4	
10-65 VDC	1000	≤200	-25 to +70	IP 67	CPB	PA 12	EPTR	N/A	YE	2M/PVC	5	Diagram 5
	1000	≤200	-25 to +70	IP 67	CPB	PA 12	EPTR	N/A	YE	2M/PVC	5	
20-250 VAC 10-300 VDC	20	≤400/300	-30 to +85	IP 67	CPB	PA 12	EPTR	YE	RD	2M/PVC	6	Diagram 6
20-250 VAC 10-300 VDC	20	≤400/300	-30 to +85	IP 67	TC	TC	EPTR	YE	RD	2M/PVC	6	

Barrels

For material descriptions see page M36.