



multibox® eurofast® 8-port Junction Box

- 1 or 2 Signals Per Port
- Rugged Plastic Housing with Flush Connectors
- Available with LEDs
- Quick Disconnect or Integral Home Run Cable
- Available with Nickel Plated Brass or Stainless Steel Threaded Connections



8-port, 1 Signal Per Port, 10-48 VDC

Application	Specifications	Pinout				PNP LED	NPN LED
8-port J-box 1 signal per port Integral cable	4 A/port, 9 A total Yellow PVC cable** 11/18 AWG, foil shield and 20 AWG drain CSA Certified **with PUR cable, add /S90	<u>Function</u> +V - V Ground Port 1 Port 2 Port 3	<u>Color</u> Bn Bu Gn/Ye Wh Gn Ye	<u>Function</u> Port 4 Port 5 Port 6 Port 7 Port 8	<u>Color</u> Cy Pk Rd Bk Vt	8MB12-4P2-*	8MB12-4N2-*
8-port J-box 1 signal per port multifast connector	4 A/port, 8 A total 12-pin multifast connector 11 conductors Mates with CKCM 12-11- CSA Certified	<u>Function</u> +V - V Ground Port 1 Port 2 Port 3	<u>Pin / Color</u> 11 / Bn 10 / Bu 12 / Gn / Ye 1 / Wh 2 / Gn 3 / Ye	<u>Function</u> Port 4 Port 5 Port 6 Port 7 Port 8	<u>Pin / Color</u> 4 / Gy 5 / Pk 6 / Rd 7 / Bk 8 / Vt	8MB12-4P2-CS12	8MB12-4N2-CS12

Note: Stainless Steel option: add "V" to description (i.e. 8MBV12-4P2-* or 8MBV12-4P2-CSV12)

8-port, 2 Signals Per Port, 10-48 VDC

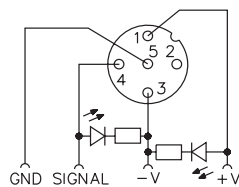
Application	Specifications	Pinout				PNP LED	NPN LED
8-port J-box 2 signals per port Integral cable	4 A/port, 9 A total Yellow PVC cable** 3/18 AWG, 16/22 AWG, foil shield and 20 AWG drain CSA Certified **with PUR cable, add /S90	<u>Function</u> +V - V Ground Port 1, Sig 1 Port 1, Sig 2 Port 2, Sig 1 Port 2, Sig 2 Port 3, Sig 1 Port 3, Sig 2	<u>Color</u> Bn Bu Gn / Ye Wh Gy / Pk Gn Rd / Bu Ye Wh / Gn	<u>Function</u> Port 4, Sig 1 Port 4, Sig 2 Port 5, Sig 1 Port 5, Sig 2 Port 6, Sig 1 Port 6, Sig 2 Port 7, Sig 1 Port 7, Sig 2 Port 8, Sig 1 Port 8, Sig 2	<u>Color</u> Cy Bn / Gn Pk Wh / Ye Rd Ye / Bn Bk Wh / Gy Vt Cy / Bn	8MB12-5P3-*	8MB12-5N3-*
8-port J-box 2 signals per port multifast connector	4 A/port, 8 A total 19-pin multifast connector 19 conductors Mates with CKM 19-19- CSA Certified	<u>Function</u> +V - V Ground Port 1, Sig 1 Port 1, Sig 2 Port 2, Sig 1 Port 2, Sig 2 Port 3, Sig 1 Port 3, Sig 2	<u>Pin / Color</u> 19 / Bn 6 / Bu 12 / Gn/Ye 15 / Wh 7 / Gy/Pk 5 / Gn 4 / Rd/Bu 16 / Ye 8 / Wh/Gn	<u>Function</u> Port 4, Sig 1 Port 4, Sig 2 Port 5, Sig 1 Port 5, Sig 2 Port 6, Sig 1 Port 6, Sig 2 Port 7, Sig 1 Port 7, Sig 2 Port 8, Sig 1 Port 8, Sig 2	<u>Pin / Color</u> 3 / Gy 14 / Bn / Gn 17 / Pk 9 / Wh / Ye 2 / Rd 13 / Ye / Bn 11 / Bk 10 / Wh/ Gy 1 / Vt 18 / Gy / Bn	8MB12-5P3-CS19	8MB12-5N3-CS19

Note: Stainless Steel option: add "V" to description (i.e. 8MBV12-4P2-* or 8MBV12-4P2-CSV12)

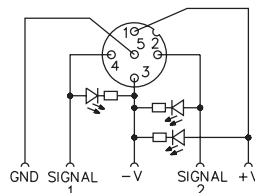
* Length in meters

Functional Wiring Diagrams

(PNP LED Version)
1 Signal Per Port



(PNP LED Version)
2 Signals Per Port

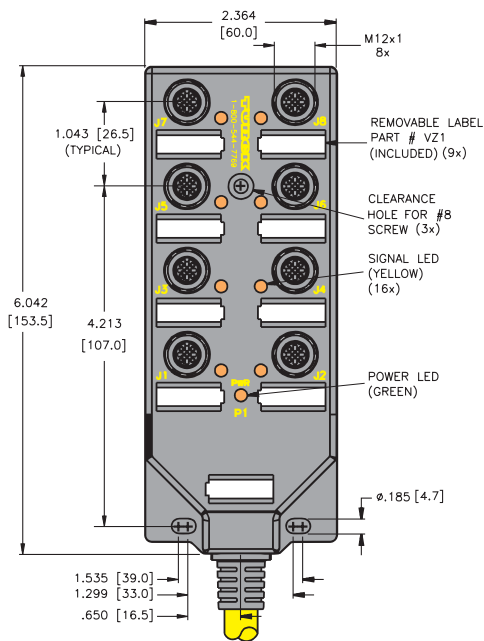


Specifications

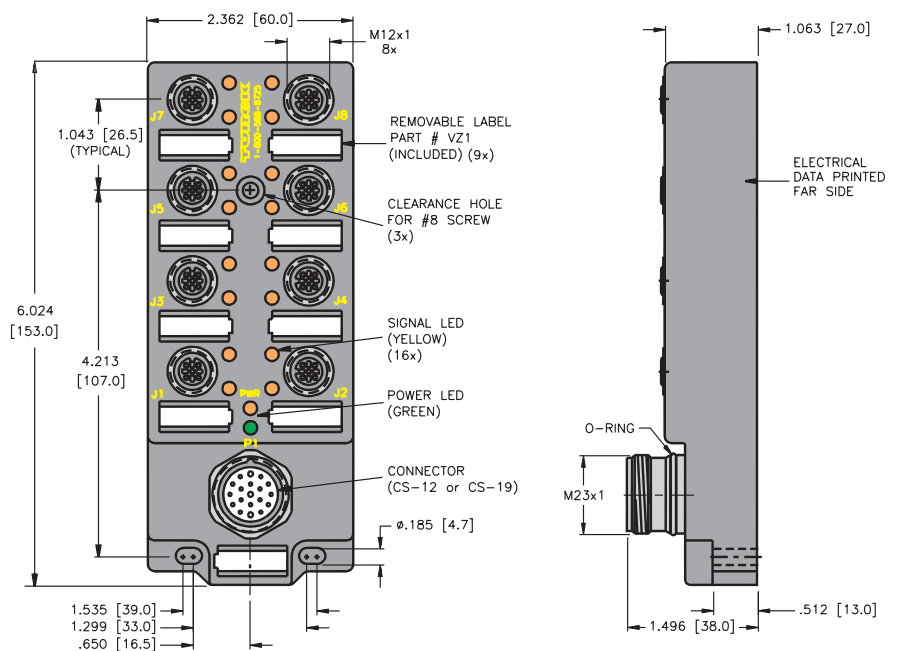
Housing:	Nylon.
Connectors:	eurofast [®] : Nylon or PUR, spacings to VDE 0110 Group C.
Contacts:	Gold plated brass.
Thread Inserts:	Nickel plated brass.
Cable:	See table.
LED Current:	10 mA maximum at 48 VDC supply voltage (per LED).
Temperature:	-30°C to +80°C (-22°F to +176°F)
Protection:	NEMA 1, 3, 4, 6P and IEC IP 67.
Accessories:	(2) VZ 3 closure caps and a VZ 1 label kit (8 labels), included.
Cable Length:	Standard length is nominal 5 meters. Other lengths available by request - Consult factory.
Recommended Splitter:	YB2-FSM 4.5/2 FKM 4.5, see page 76.

Dimensions

8-port Integral Cable



8-port Quick Disconnect



Pinout

Female	Female	Male	Male
4-pin eurofast	5-pin eurofast	12-pin multifast	19-pin multifast