



REVConnect is a brand new RJ45 connectivity system. A single **Reliable** and **Easy** termination method that offers unparalleled **Versatility**; it covers jack and plug, shielded or unshielded, Category 5e through Category 6A. See the reverse side for ordering information.



RELIABLE

What Makes REVConnect Reliable?

REVConnect gets its reliability from a unique termination process featuring a universal 'core' comprised of a cable manager and cap. The cap features eight insulation piercing contacts which create a highly reliable, gas-tight termination proven to increase first pass yields and reduce rework.

How Much More Reliable Is REVConnect?

Voice of customer feedback indicates nearly 5% of terminations need some level of rework ranging from repunching one wire to completely starting over with a new connector. With REVConnect, rework will be reduced to less than 1% of all terminations.

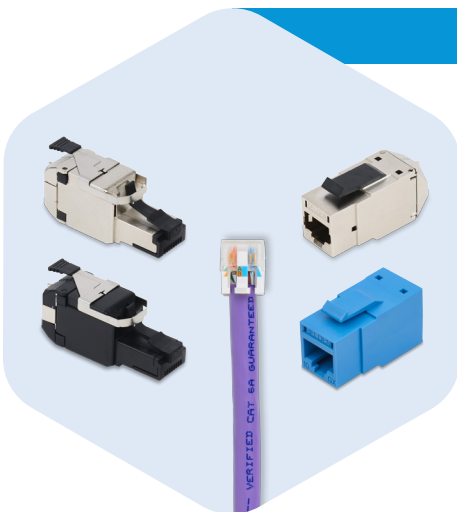
EASY

What Makes REVConnect Easy?

The termination of the REVConnect core is a simple, straightforward process that requires no pair separation! This means, both bonded and non-bonded cables terminate in the same amount of time. On top of that, the single core termination is all the installer needs to know in order to terminate eight different modules.

How Much Faster Is REVConnect?

Though it does depend on what you're comparing to, REVConnect has shown to be over 50% faster than some existing connectors and is, no doubt, one of the fastest connectors to terminate available today.



VERSATILE

How Is REVConnect Versatile?

REVConnect's core technology accepts eight RJ45 modules: UTP jacks (Category 5e through 10GX), Shielded jacks (Category 5e through 10GX), and 10GX Shielded and Unshielded Field Mountable Plugs. A single termination tool is all that is required for the entire termination, including cable prep!

What About Future Generation Modules?

As one could imagine, REVConnect's core technology has potential beyond the current offering. The available eight modules are only the beginning of what we expect to be a revolutionary connectivity platform to support the emerging applications of today and tomorrow.



Ordering Information

Description	Elec White	Black	Gray	Ivory	Almond
REVConnect 10GX Jack - Single Pack	RVAMJKUEW-S1	RVAMJKUBK-S1	RVAMJKUGY-S1	RVAMJKUIV-S1	RVAMJKUAL-S1
REVConnect 10GX Jack - Bulk Pack	RVAMJKUEW-B24	RVAMJKUBK-B24	RVAMJKUGY-B24	RVAMJKUIV-B24	RVAMJKUAL-B24

10GX

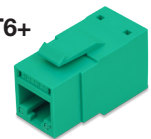


Description	Brown	Red	Orange	Yellow	Green	Blue	Purple
REVConnect 10GX Jack - Single Pack	RVAMJKUBR-S1	RVAMJKURD-S1	RVAMJKUOR-S1	RVAMJKUYL-S1	RVAMJKUGN-S1	RVAMJKUBL-S1	RVAMJKUPR-S1
REVConnect 10GX Jack - Bulk Pack	RVAMJKUBR-B24	RVAMJKURD-B24	RVAMJKUOR-B24	RVAMJKUYL-B24	RVAMJKUGN-B24	RVAMJKUBL-B24	RVAMJKUPR-B24

Description	Brown TIA	Red TIA	Orange TIA	Yellow TIA	Green TIA	Blue TIA	Purple TIA
REVConnect 10GX Jack - Single Pack	RVAMJKUTN-S1	RVAMJKUTR-S1	RVAMJKUTO-S1	RVAMJKUTY-S1	RVAMJKUTG-S1	RVAMJKUTB-S1	RVAMJKUTP-S1
REVConnect 10GX Jack - Bulk Pack	RVAMJKUTN-B24	RVAMJKUTR-B24	RVAMJKUTO-B24	RVAMJKUTY-B24	RVAMJKUTG-B24	RVAMJKUTB-B24	RVAMJKUTP-B24

Description	Elec White	Black	Gray	Ivory	Almond
REVConnect CAT6+ Jack - Single Pack	RV6MJKUEW-S1	RV6MJKUBK-S1	RV6MJKUGY-S1	RV6MJKUIV-S1	RV6MJKUAL-S1
REVConnect CAT6+ Jack - Bulk Pack	RV6MJKUEW-B24	RV6MJKUBK-B24	RV6MJKUGY-B24	RV6MJKUIV-B24	RV6MJKUAL-B24

CAT6+



Description	Brown	Red	Orange	Yellow	Green	Blue	Purple
REVConnect CAT6+ Jack - Single Pack	RV6MJKUBR-S1	RV6MJKURD-S1	RV6MJKUOR-S1	RV6MJKUYL-S1	RV6MJKUGN-S1	RV6MJKUBL-S1	RV6MJKUPR-S1
REVConnect CAT6+ Jack - Bulk Pack	RV6MJKUBR-B24	RV6MJKURD-B24	RV6MJKUOR-B24	RV6MJKUYL-B24	RV6MJKUGN-B24	RV6MJKUBL-B24	RV6MJKUPR-B24

Description	Brown TIA	Red TIA	Orange TIA	Yellow TIA	Green TIA	Blue TIA	Purple TIA
REVConnect CAT6+ Jack - Single Pack	RV6MJKUTN-S1	RV6MJKUTR-S1	RV6MJKUTO-S1	RV6MJKUTY-S1	RV6MJKUTG-S1	RV6MJKUTB-S1	RV6MJKUTP-S1
REVConnect CAT6+ Jack - Bulk Pack	RV6MJKUTN-B24	RV6MJKUTR-B24	RV6MJKUTO-B24	RV6MJKUTY-B24	RV6MJKUTG-B24	RV6MJKUTB-B24	RV6MJKUTP-B24

Description	Elec White	Black	Gray	Ivory	Almond
REVConnect CAT5E Jack - Single Pack	RV5MJKUEW-S1	RV5MJKUBK-S1	RV5MJKUGY-S1	RV5MJKUIV-S1	RV5MJKUAL-S1
REVConnect CAT5E Jack - Bulk Pack	RV5MJKUEW-B24	RV5MJKUBK-B24	RV5MJKUGY-B24	RV5MJKUIV-B24	RV5MJKUAL-B24

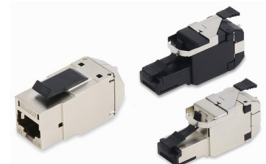
CAT5E



Description	Brown	Red	Orange	Yellow	Green	Blue	Purple
REVConnect CAT5E Jack - Single Pack	RV5MJKUBR-S1	RV5MJKURD-S1	RV5MJKUOR-S1	RV5MJKUYL-S1	RV5MJKUGN-S1	RV5MJKUBL-S1	RV5MJKUPR-S1
REVConnect CAT5E Jack - Bulk Pack	RV5MJKUBR-B24	RV5MJKURD-B24	RV5MJKUOR-B24	RV5MJKUYL-B24	RV5MJKUGN-B24	RV5MJKUBL-B24	RV5MJKUPR-B24

Description	Brown TIA	Red TIA	Orange TIA	Yellow TIA	Green TIA	Blue TIA	Purple TIA
REVConnect CAT5E Jack - Single Pack	RV5MJKUTN-S1	RV5MJKUTR-S1	RV5MJKUTO-S1	RV5MJKUTY-S1	RV5MJKUTG-S1	RV5MJKUTB-S1	RV5MJKUTP-S1
REVConnect CAT5E Jack - Bulk Pack	RV5MJKUTN-B24	RV5MJKUTR-B24	RV5MJKUTO-B24	RV5MJKUTY-B24	RV5MJKUTG-B24	RV5MJKUTB-B24	RV5MJKUTP-B24

Package Size	10GX Shielded Jacks	CAT6+ Shielded Jacks	CAT5E Shielded Jacks	10GX Shielded Plugs	10GX UTP Plugs
Single Pack	RVAMJKSME-S1	RV6MJKSME-S1	RV5MJKSME-S1	RVAFPSME-S1	RVAFPUBK-S1
Bulk Pack (24 Modules)	RVAMJKSME-B24	RV6MJKSME-B24	RV5MJKSME-B24	RVAFPSME-B24	RVAFPUBK-B24



Universal Termination Tool	Tool Spare Blade Set	Cable Prep Tool Replacement	Tool Belt Clip	Dust Caps for Jacks	Icons for Jacks	Bulk Pack of REVConnect Cores
RVUTT01	RVUTB01	RVUCT01	RVUTC01	RVUDCX-B24	RVUICX-B24	RVUCOEW-B50

Includes tool, cable prep insert, and spare blade set

Optional extra set of blades with Allen key included

Optional cable prep tool replacement insert

Optional belt clip for universal tool

Optional dust caps for all jacks; XX is color code, pack of 24

Optional icons for all jacks; XX is color code, pack of 24

Bulk pack of 50 cable managers and caps

Color codes: GY (gray), AL (almond), EW (electric white), BK (black), IV (ivory), BR (brown), RD (red), OR (orange), YL (yellow), GN (green), BL (blue), PR (purple), TN (TIA brown), TR (TIA red), TO (TIA orange), TY (TIA yellow), TG (TIA green), TB (TIA blue), TP (TIA purple)

For more information about REVConnect, visit www.info.belden.com/REVConnect or call **1.800.BELDEN.1**

© Copyright 2016, Belden Inc.
REVConnect Ordering and FAQ Guide_PB00063_V1_ECOS_BDC_0516_A_AG