

Medium and Large Router Attachments

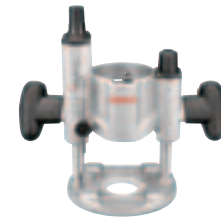
Fixed Bases



- ▶ Trigger-Control System—Trigger power switch (with lock-on button) conveniently located in handle for enhanced control
- ▶ Versatile Fixed-Base Depth Adjustment System—For easy and precise bit depth adjustment. Features 1-5/8" (41mm) continuous microfine adjustment range and hex wrench for microfine adjustment through top of optional router table
- ▶ Macrofine and Microfine Adjustment System with Resettable Depth Indicator—For fast, precise bit depth adjustment
- ▶ Large 3-3/4" Base Opening and 2" Subbase Opening—Accepts larger bits and provides better viewing visibility
- ▶ Precision Centering Design—Makes it easy to keep bit on intended outline when using jigs, templates, dovetail fixtures and similar guidance devices

Item #	Description
MRF001	Fixed base for use with MR23EVS series routers. Includes table-mounting hardware and adjustment wrench.

Plunge Bases

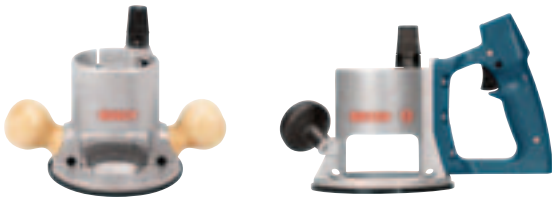


- ▶ Trigger-Control System—Trigger power switch (with lock-on button) conveniently located in handle for enhanced control
- ▶ Afterlock Microfine Depth Adjustment—For easy and precise bit depth adjustment at any plunge setting
- ▶ Smooth Plunge Action, Spring-Lock Plunge Lever and Depth Rod—For easy and precise plunge routing
- ▶ Adjustable Turret Stop—Makes it easy to set any cumulative depth for multiple-pass operations
- ▶ Wide 3-5/16" Base Opening and 2" Subbase Opening—Accepts larger bits and provides better visibility
- ▶ Precision Centering Design—Makes it easy to keep bit on intended outline when using jigs, templates, dovetail fixtures and similar guidance devices
- ▶ Contoured Soft-Grip Handles—Provides enhanced control and comfort
- ▶ Plunge-Release Lever—Conveniently located to allow maximum control

Item #	Description
MRP001	Plunge base for use with MR23EVS series routers

7

Wood and Metal Cutting Router Attachments



- ▶ Macrofine and microfine adjustment system with resettable depth indicator—For fast, precise bit depth adjustment
- ▶ Large 3-3/4" base opening and 2" subbase opening—Accepts larger bits and provides better viewing visibility
- ▶ Precision Centering Design—Makes it easy to keep bit on intended outline when using jigs, templates, dovetail fixtures and similar guidance devices

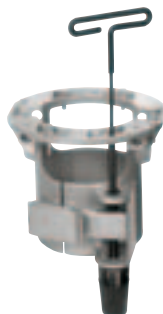
Item #	Description
RA1161	Fixed base for use with 1617-18 series router motors. Same router table features as RA1165. Includes chip shield, table-mounting hardware and adjustment wrench
RA1162	D-handle fixed base for use with 1618 series router motors. Includes chip shield

- ▶ Fine Adjustment on Depth Rod—For fast, accurate bit depth setting
- ▶ Wide 3-5/16" base opening and 2" subbase opening—Accepts larger bits and provides better visibility
- ▶ Precision Centering Design—Makes it easy to keep bit on intended outline when using jigs, templates, dovetail fixtures and similar guidance devices
- ▶ Contoured Soft-Grip Handles—Provides enhanced control and comfort
- ▶ Plunge-Release Lever—Conveniently located to allow maximum control
- ▶ Plunge depth of 2-5/16"

Item #	Description
RA1166	For use with 1617-18 series router motors

Router Table Base

- ▶ Designed for router table usage
- ▶ Wrench access from above table for convenient depth adjustment
- ▶ Wide 3-3/4" base opening allows for use of large bits
- ▶ Toolless Base Change—Quick-clamp system allows motor to be moved with ease
- ▶ Base is pre-drilled and tapped for Bosch four-hole mounting pattern, plus industry-standard three-hole mounting pattern
- ▶ For use with 1617-18 series router motors



Item #	Includes
RA1165	Mounting hardware, adjustment wrench and chip shield

Deluxe Router Guide

- ▶ Precision fine adjustment control
- ▶ Guides cut along the workpiece or up to 8" in from edge
- ▶ Easily converts into circle guide for making arcs and circles up to 32" in diameter
- ▶ Fits models 1613, 1617, 1618, 1619 and MR23EVS series routers and bases plus PR011 palm router plunge base



Item #	Includes
RA1054	Pivot plate, dust extraction hood, vacuum hose adapter and attachment hardware

Quick-Change Toolless Templet Guide Adapter

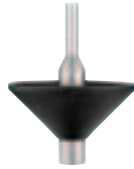
- ▶ See chart on pages 226–227 for router compatibility
- ▶ Also works with PR011 palm router plunge base
- ▶ See chart on page 234 for range of Bosch Quick-Change/RA-style templet guides



Item #	Description
RA1126	For fast and easy changes of Bosch Quick-Change/RA-style templet guides

Centering Cone

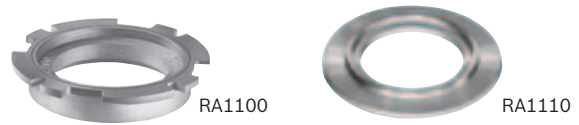
- ▶ For precise centering of router subbases or templet guides



Item #	Description
RA1151	For use with all Bosch routers that have precision centering design, including palm routers

Threaded Templet Guide Adapters

- ▶ Allows use of Porter-Cable® or any similar threaded templet guides



Item #	Description
RA1100	For use with Bosch routers with toolless templet guide adapter system and with PR009 palm router optional subbase
RA1110	For use with older Bosch routers that use the Bosch "standard style" templet guide adapter system

Dust Collection Attachments

Edge-Forming Single Dust Extraction Hood



- ▶ Hose port angle maximizes collection efficiency, keeps hose out of the way
- ▶ See chart on pages 226–227 for router compatibility
- ▶ Also works with PR011 palm router plunge base



Item #	Includes
RA1175	One vacuum adapter for 35mm, 1-1/4" and 1-1/2" hoses

Two-Hood Dust Extraction Kit



- ▶ With dust extraction hoods for edge-forming and flat-surface applications
- ▶ Consists of RA1175, plus hood for flat work surface applications with fixed base



Item #	Description
RA1172AT	Fits 1617/1618 series
RA1176AT	Fits MRF23EVS

Three-Hood Dust Extraction Kit



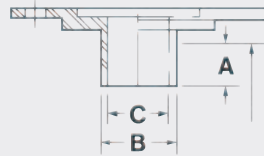
- ▶ With dust extraction hoods for edge forming and flat surface applications
- ▶ Consists of two-hood kit, plus hood for flat work-surface applications with plunge base



Item #	Description
RA1173AT	Fits 1617EVSPK
RA1177AT	Fits MRP23EVS and MRC23EVS

Templet Guides

Quick Change/RA Style



- A = Distance templet guide tip extends from bottom of subbase
- B = Outside diameter templet guide tip
- C = Inside diameter templet guide tip

Note: Cut diameter of router bit should be at least 1/16" less than dimension "C" on templet guide.

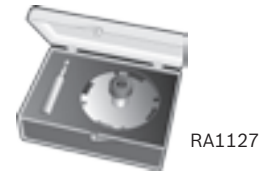
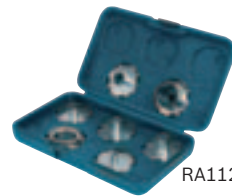
Templet Guides

Primary Application	Templet Guide Item #	Templet Guide Dimensions		
		A	B	C
General	RA1107	5/16"	7/16"	3/8"
General	RA1109	7/16"	1/2"	13/32"
General	RA1111	3/16"	5/8"	17/32"
General	RA1115	3/16"	3/4"	21/32"
General	RA1117	31/64"	13/16"	5/8"
General	RA1119	31/64"	1"	25/32"
Large Dovetail	RA1105	9/64"	7/16"	3/8"
Radius Hinge, 1/4"	RA1113	1/2"	5/8"	17/32"
Radius Hinge, 5/8"	RA1121	7/16"	1-3/8"	1-19/64"
Small Dovetail	RA1103	9/64"	5/16"	17/64"
7 pc Templet Guide Kit	RA1125			
Router Inlay Kit	RA1127			

Router Compatibility

- ▶ 1613, 1613EVS, 1614, 1614EVS—The templet guides are attached to these routers by using the router's built-in templet guide adapter
- ▶ 1613AEVS, 1617, 1617EVS, 1618, 1618EVS, 1619EVS, MRF23EVS, MRP23EVS, MRC23EVS—The templet guides are attached to these routers by using the RA1126 Templet Guide Adapter (sold separately)
- ▶ PR10E, PR20EVS—The templet guides are attached to these routers by placing the templet's flange in recess at top of the PR009 Fixed-Base Subbase (sold separately) and then mounting it to the router
- ▶ PR20EVSPK, PR011 Plunge Base—The templet guides are attached to these routers by using the RA1126 Templet Guide Adapter (sold separately)

Templet Guide and Inlay Kits



Item #	# of Pieces	Includes
RA1125	7	Templet guide kit: (1) RA1103, (1) RA1105, (1) RA1109, (1) RA1113, (1) RA1115, (1) RA1121, (1) RA1100 adapter
RA1127	2	Router inlay kit: (1) RA1101 templet guide assembly, (1) 85213M router bit plus instructions

Routing Accessories

Router/Hinge Mortising Specifications and Where Used

Door Height	Number of Hinges	Door Hinge Thickness	Hinge Size	For Wood Use or Metal* Jamb	Use Extra Link Rails	Use Conversion Kit
6' 6" to 7'	2 or 3	1-3/8" to 2-1/4"	2-1/2" to 5-1/2"	83038	—	—
8'	3	1-3/8" to 2-1/4"	2-1/2" to 5-1/2"	83038	83004	—
7' to 9'	4	1-3/8" to 2-1/4"	2-1/4" to 5-1/2"	83038	—	83039

*Metal jamb gauge blocks are required when working with metal jamb

Templet Guides and Router Bits Needed for Hinge Routing

When Using This Router	And Your Hinge Butt Has This Corner Radius	Use This Templet Guide	Use This Router Bit	Use This Cutter Head and Threaded Shank
1613, 1613EVS, 1613AEVS, 1614, 1614EVS, 1617, 1617EVS, 1618, 1618EVS, 1619EVS, MR23EVS	1/4"	RA1113	85159	—
1613, 1613EVS, 1613AEVS, 1614**, 1614EVS**, 1617, 1617EVS, 1618, 1618EVS, 1619EVS, MR23EVS	5/8"	RA1121	—	85238M and 92839 (1/4" shank) or 85234M and 92840 (1/2" shank)

**1614, 1614EVS only accept 1/4" shank