

Type MGGA
Fast Acting Automotive (MEGA®)¹
Limiter Fuse
2”(50.8mm) Center to Center Bolt-on



www.optifuse.com (800) 621-0326

Interrupting Rating (IR): 250A @ 32VDC
Operating Temperature: -40°C ~ 125°C

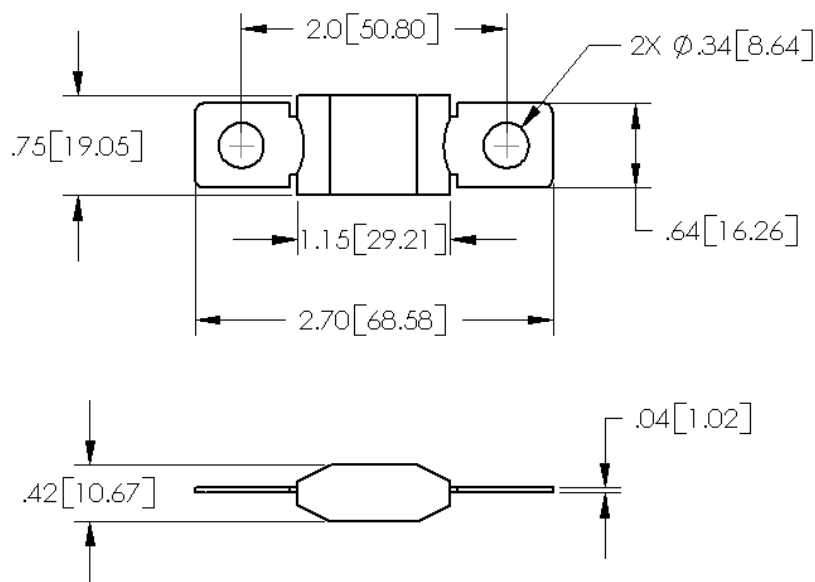
Electrical Characteristics:

Rating A (In)	100% In	135% In	200% In	350% In	600% In
Time	Min 4 hr.	Min 120 sec Max 1800 sec	Min 1 sec Max 15 sec	Min .3 sec Max 5 sec	Min .1 sec Max 1 sec

Product Information:

Part Number	Ampere Rating	Voltage Rating (VDC)	Stamp Color Code	Nominal Cold Resistance (mΩ)	Minimum Melting I ² t (A ² Sec.)
MGGA-100	100	32	Yellow	0.55	31,100
MGGA-125	125	32	Green	0.43	57,800
MGGA-150	150	32	Orange	0.35	100,000
MGGA-175	175	32	White/Clear	0.27	168,000
MGGA-200	200	32	Blue	0.26	204,000
MGGA-225	225	32	Tan	0.23	257,000
MGGA-250	250	32	Pink	0.19	389,000

MGGA Product Dimensions: Inches[mm]



Note: All specifications subject to change without notice.

Rev A 05/2006 - Page: 1/2
 Code: J01

1. MEGA® is a registered trademark of Littelfuse.

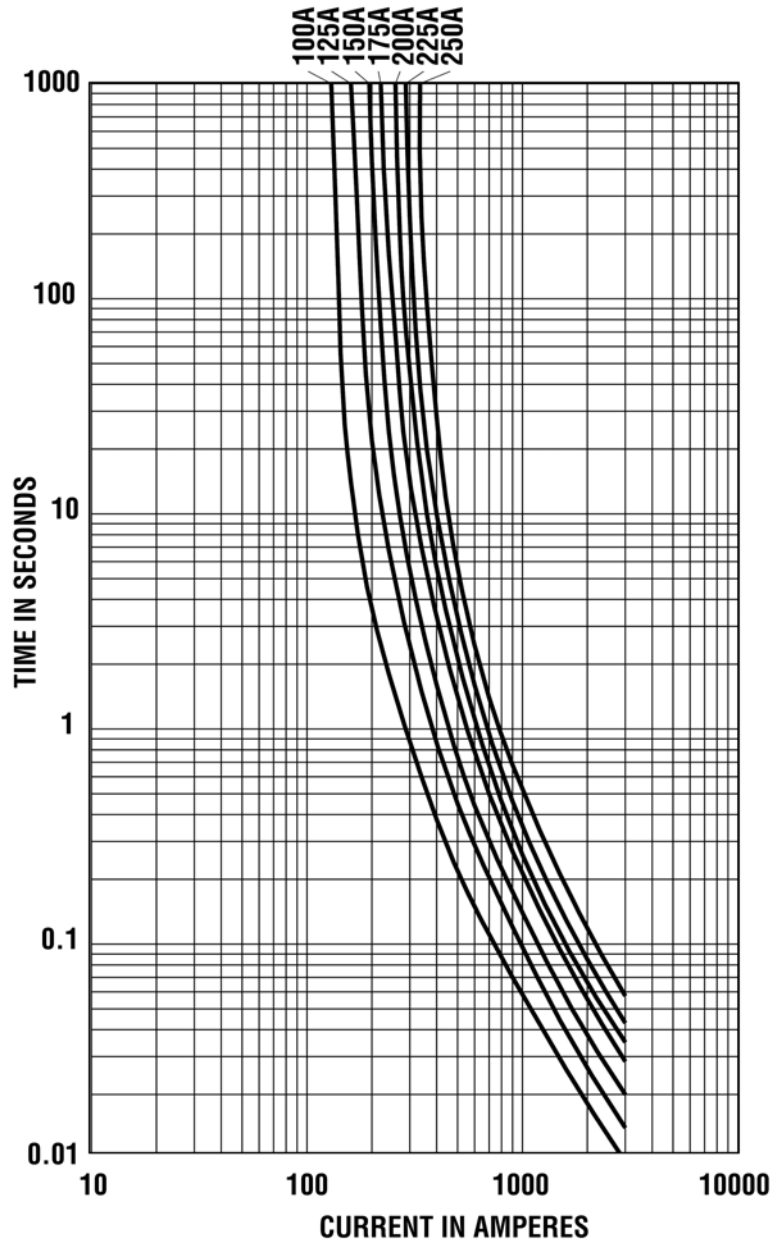
**Type MGGA
Fast Acting Automotive (MEGA®)¹
Limiter Fuse
2”(50.8mm) Center to Center Bolt-on**




www.optifuse.com

(800) 621-0326

Average Time Current Curves:



<p>Warning:</p> 	<ul style="list-style-type: none"> -Operation beyond the specified maximum ratings or improper use may result in damage and possible electrical arcing and/or flame. -Limiter Fuses are intended for occasional overcurrent protection. Application for repeated overcurrent condition and/or prolonged trip are not anticipated. -Avoid contact of Limiter Fuses with chemical solvent. Prolonged contact will damage the device performance.
------------------------------------------------------------------------------------------------------------	---------------------------------------------------------------------------------------------------------------------------------------------------------------------------------------------------------------------------------------------------------------------------------------------------------------------------------------------------------------------------------------------------------------------------------------------------------------------------------

Note: All specifications subject to change without notice.

Rev A 05/2006 - Page: 2/2
Code: J01

1. MEGA® is a registered trademark of Littelfuse.