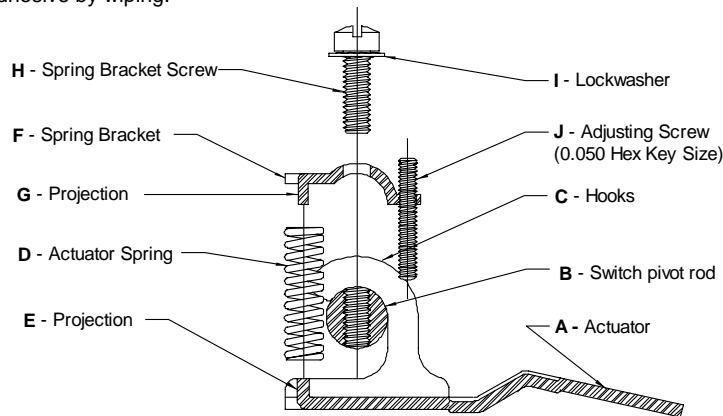


HEAVY DUTY FOOT SWITCH

1. **⚠ WARNING: TO AVOID PERSONAL INJURY, DO NOT USE THIS SWITCH ON MACHINERY WITH AN UNGUARDED POINT OF OPERATION.**

⚠ READ WARNING STATEMENT on reverse side of this page.

2. When wiring up this device make sure **POWER IS OFF AND LINES ARE DEAD.**
3. **MAXIMUM FUSE RATING:** Amperage and voltage not to exceed nameplate rating – Quick Acting.
4. This device is for use in ordinary locations, **TYPE 2, 4 and 13** and intended to be permanently connected by means of conduit, flexible cord or other system in accordance with the **NATIONAL ELECTRICAL CODE.**
When wiring up this device with flexible cord an **UNDERWRITERS LABORATORIES LISTED** liquidtight connector **MUST BE** provided. Use appropriate pipe thread sealant at assembly to seal connector threads. When threading into the conduit opening, **CARE** must be taken to tighten the threaded joint sufficiently to prevent loosening but should **NOT BE FORCED.** The conduit threads should be kept clean; free from dirt and foreign materials that would hinder proper installation.
FOR CE MARKED FOOT SWITCHES, PLEASE NOTE THE FOLLOWING: The grounding conductor must be green/yellow in color and be long enough such that the grounding terminal will be the last terminal to take the strain, should the strain relief fail. A cord guard or bend relief must be provided that extends beyond the liquidtight connector at least five times the overall diameter of the flexible cord.
5. **TO CHANGE ADJUSTMENT** of the operating point of an interior switch, depress the treadle to the point where you want the switch to operate. With the treadle depressed to the desired operating point, turn the adjusting screw until the switch snaps. Turn clockwise to lower the operating point and counter-clockwise to raise it. Apply Loctite Corporation Threadlocker Adhesive #290 (or equivalent) penetrating low-viscosity anaerobic liquid adhesive to adjusting screw "J" after changing adjustment. Avoid applying an excessive amount of the liquid adhesive to prevent migration. Remove excess liquid adhesive by wiping.



6. Tighten the cover screws such that an effective seal is obtained with the gasket. Tighten to 30 to 35 in—lb. (3.4 to 4.0 Nm); two tightenings required.
7. **CLEANLINESS** must be observed during installation and in use.

On a **REGULAR BASIS**, lubricate the treadle pivot rod with one or two drops of lubricating oil on that portion of the pivot rod that extends between the outside of the base and inside of the treadle; two places.

On a **REGULAR BASIS**, inspect foot switch frequently to guard against wear, damage, unlawful alterations or removal of guards, or for unusual enclosure deterioration and the like. Inspect the entire length of the connecting cord (or wiring system) from where it enters the foot switch to the equipment its wired up to for wear, loose strain relief connections and the like. **DO NOT OPERATE** the foot switch if any of the above is observed or if the nameplate or warning labels have been obscured or removed.

It is **IMPERATIVE** that inspection authorities and users exercise more than ordinary care with regard to installation and maintenance and that this information sheet be made available to the end user, operators, maintenance personnel and to others responsible for the proper installation and safe operation of this foot switch.

ADDITIONAL COPIES of this information sheet and warning labels are available upon request.

WARNING

USE OF FOOT CONTROLS ON MACHINERY LACKING EFFECTIVE POINT OF OPERATION SAFEGUARDS CAN CAUSE SERIOUS INJURY TO THE OPERATOR.

Foot controls should only be used where "Point of Operation" and "Pinch Point" guarding devices have been properly installed and are utilized so that it is **IMPOSSIBLE** for the operator's hands or fingers to remain within the point of operation during the machine cycle.

IT IS THE RESPONSIBILITY OF THE USER to determine the suitability of a foot control for the user's intended use and to determine that the foot control chosen by the user and wiring up and installation of the same will comply with all Federal, State and Local safety and health regulations and codes.

Due to the unlimited variety of business equipment, instruments, machines and vehicles on which our foot switches are used, the thousands of standards, and customers' varying interpretations of the standards covering these applications, it is impossible for **LINEMASTER** personnel to be experts on standards and requirements for all these products. We offer over 150 stock foot switch models and guards plus a large variety of specials, which are made to customer specifications. We can advise you what is available in our foot switch line and you can examine models to see what meets your needs. We believe our customers' engineering departments should be the qualified experts in their own product field and know what specifications or details they require in a foot switch for their equipment. If one of our stock models meets their needs, they can specify it, or possibly ask for a modification of a stock model if that is required.

SHOULD YOU HAVE ANY QUESTIONS OR IF ANY OF THE ABOVE WARNING IS UNCLEAR, PLEASE CALL LINEMASTER SWITCH CORPORATION.

(860) 974-1000; FAX (860) 974-0691 OR (800) 974-3668; www.linemaster.com

READ INSTRUCTIONS on reverse side of this page.

DEFINITIONS:

POINT OF OPERATION - The point or area of the machine or equipment where the work piece or material is actually positioned and work is being performed during any process such as cutting, shearing, punching, forming, welding, riveting, assembling, etc..

PINCH POINT - Any point at which it is possible for a portion of the body to be caught and injured between moving machine or equipment or work piece parts.

