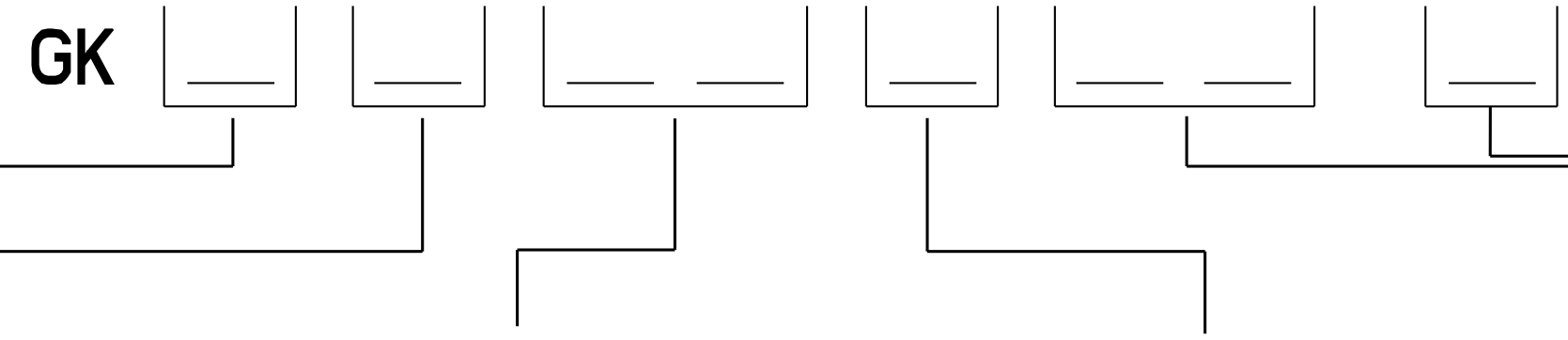


DUAL ENTRY KEY OPERATED SAFETY INTERLOCK NOMENCLATURE



BODY / INDICATOR		CONDUIT		BASIC $\triangle 9$		HEAD		KEY		MODIFICATION CODE $\triangle 12$
B	NO INDICATOR	A	1/2 NPT	1	SNAP ACTION 1 NC - 1 NO, A600	L	OPENING TO FRONT AND TOP	6	STRAIGHT	
C	SINGLE LED INDICATOR	B	PG 13.5	2	SNAP ACTION 2 NC - 2 NO, A600	M	OPENING TO RIGHT AND TOP	7	90 DEGREE	F06
D	DOUBLE LED INDICATOR	C	20 MM	3	SLOW ACTING 1 NC - 1 NO BBM, A600	N	OPENING TO BACK AND TOP	8	UP-DOWN - SPRING LOADED	FW
		D	PF 1/2	4	SLOW ACTING 1 NC - 1 NO MBB, A600	P	OPENING TO LEFT AND TOP	9	SIDE-SIDE - SPRING LOADED	
				6	SLOW ACTING 2 NC, A300			X	NO KEY	
				7	SNAP ACTION 1 NC - 1 NO - GOLD, SEE BELOW					
				10	SLOW ACTING 4 NC, A300					
				12	SLOW ACTING 2 NC - 1 NO BBM, A300					
				14	SLOW ACTING 2 NC - 2 NO BBM, A300					
				16	SLOW ACTING 3 NC - 1 NO BBM, A300					
				30	SLOW ACTING 4 NC - GOLD, A300					
				32	SLOW ACTING 2 NC - 1 NO BBM - GOLD, A300					
				34	SLOW ACTING 2 NC - 2 NO BBM - GOLD, A300					
				36	SLOW ACTING 3 NC - 1 NO BBM - GOLD, A300					

- NOTES
- 1 - ZINC DIECAST BODY AND HEAD WITH STEEL COVER. BODY, HEAD AND COVER FINISHED WITH EPOXY PAINT
 - 2 - MINIMUM OPERATING VELOCITY (V_{min}) = 10 mm/S
.39 in/S
MAXIMUM OPERATING VELOCITY (V_{max}) = 1 M/S
39.4 in/S
 - 3 - MAXIMUM OPERATING FREQUENCY (F_{max}) = 100 OPS/MIN
 - 4 - NO CHANGES CAN BE MADE TO THIS DRAWING WITHOUT JOINT FREEPORT/NEWHOUSE APPROVAL
 - 5 - INSERTION FORCE = 35N NOM
8 LB
EXTRACTION FORCE = 28 N NOM
6 LB
 - 6 - SNAP ACTION N.C. CONTACTS: POSITIVE OPENING
SLOW MAKE AND BREAK N.C. CONTACTS: DIRECT ACTING
 - 7 - WHEN KEY IS INSERTED: N.C. TERMINALS ARE 11/12, 21/22, 31/32 AND/OR 41/42
N.O. TERMINALS ARE 13/14, 23/24, 33/34 AND/OR 43/44
 - 8 - THE MAXIMUM VOLTAGE, V_e OF GKC AND GKD SERIES PRODUCTS IS THE MAXIMUM RATED VOLTAGE OF INDICATION LIGHTS: 12 TO 250 VAC/DC FOR GKC AND 18 TO 30 VDC FOR GKD
 - 9 - THE LEFT INDICATOR IS GREEN AND IS INTENDED TO INDICATE "POWER ON". THIS FEATURE IS ON GKD SERIES PRODUCTS ONLY.
THE RIGHT INDICATOR IS YELLOW AND IS INTENDED TO INDICATE "OUTPUT STATUS". THIS FEATURE IS ON GKC AND GKD SERIES PRODUCTS ONLY
 - 10 - SEE BASIC SWITCH COLUMN FOR VOLTAGE RATING
 - 11 - T-15 TAMPER PROOF TORX DRIVER BIT PROVIDED
 - 12 - SWITCH MUST OPERATE BEFORE REACHING MINIMUM INSERTION DISTANCE
 - 13 - FOR CONNECTOR AND CIRCUIT DETAILS OF MODIFICATION CODE, REFER PAGE 7 FOR CODE F06, PAGE 8 FOR CODE FW

SPDT GOLD PLATED CONTACTS	ELECTRICAL RATING $\triangle 9$				ENVIRONMENTAL	APPROVALS
	AC		DC			
1V 10 μ MIN 50V 100mA MAX	A300/A600	AC15	Q300	DC13	IP 67 NEMA 1, 4, 12 & 13 TEMP RANGE: -25°C TO 85°C -13°F TO 185°F STORAGE: -40°C TO 85°C -40°F TO 185°F SHOCK: 50G PER IEC 68-2-27 VIBRATION: 10G PER IEC 68-2-6	 IEC 947-5-1 EN50041
	U_e	I_e	U_e	I_e		
	(VOLTS)	(AMPS)	(VOLTS)	(AMPS)		
	120	6	24	2.8		
	240	3	125	.55		
380	1.9	250	.27			
480	1.5					
500	1.4					
600	1.2					
	$I_{th} = 10A$					

THIRD ANGLE PROJECTION	
SCALE	NONE
DO NOT SCALE PRINT	
UNLESS OTHERWISE SPECIFIED TOLERANCES ARE	
ONE PLACE	(.0) \pm .030
TWO PLACES	(.00) \pm .015
THREE PLACES	(.000) \pm .005
ANGLES	\pm
WEIGHT	APPROX .5 KG / 1 LB

THIS DRAWING COVERS A PROPRIETARY ITEM AND IS THE PROPERTY OF MICRO SWITCH, A DIVISION OF HONEYWELL. THIS DRAWING IS NOT TO BE COPIED OR USED WITHOUT THE APPROVAL OF MICRO SWITCH.

MICRO SWITCH a Honeywell Division

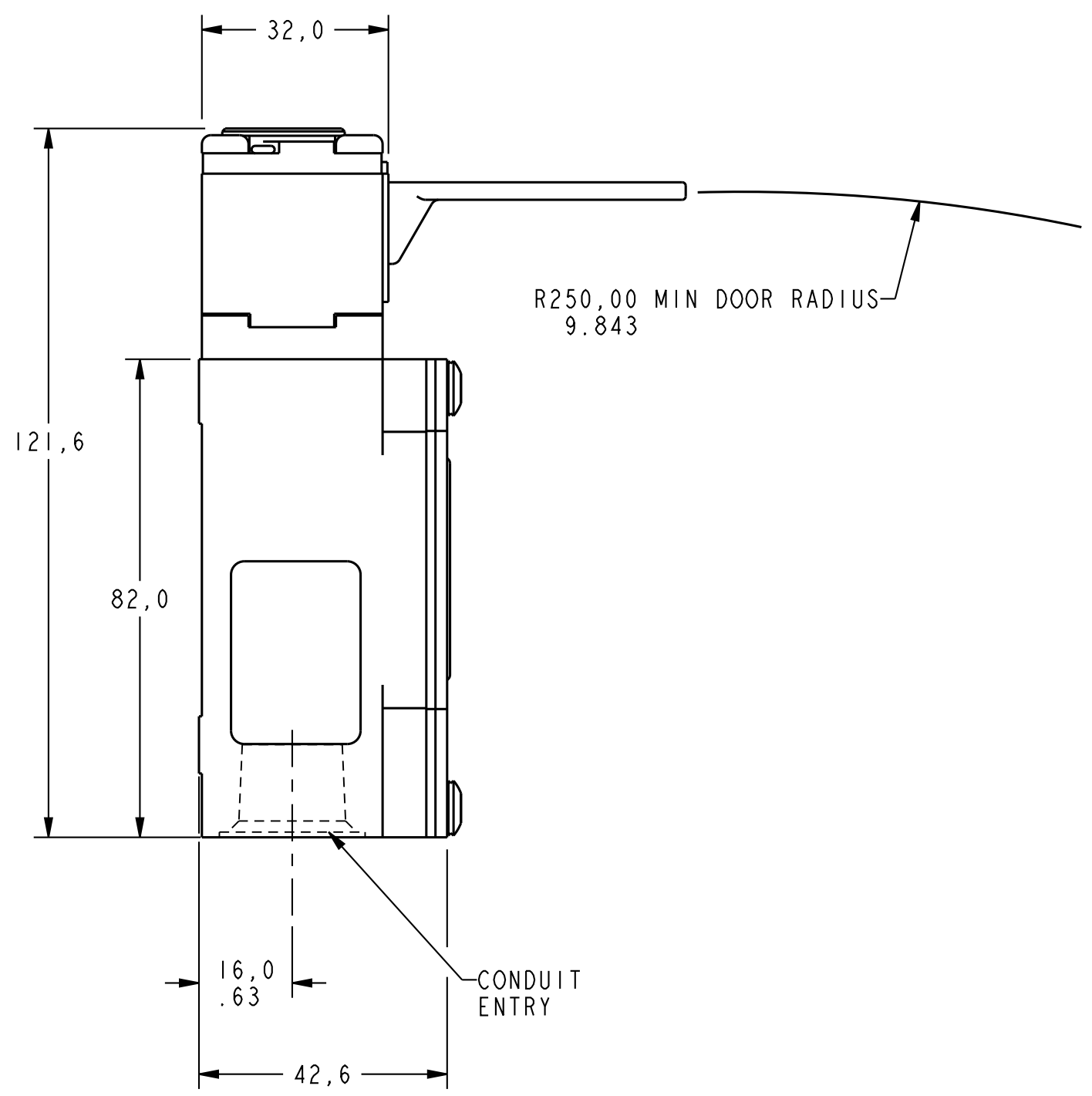
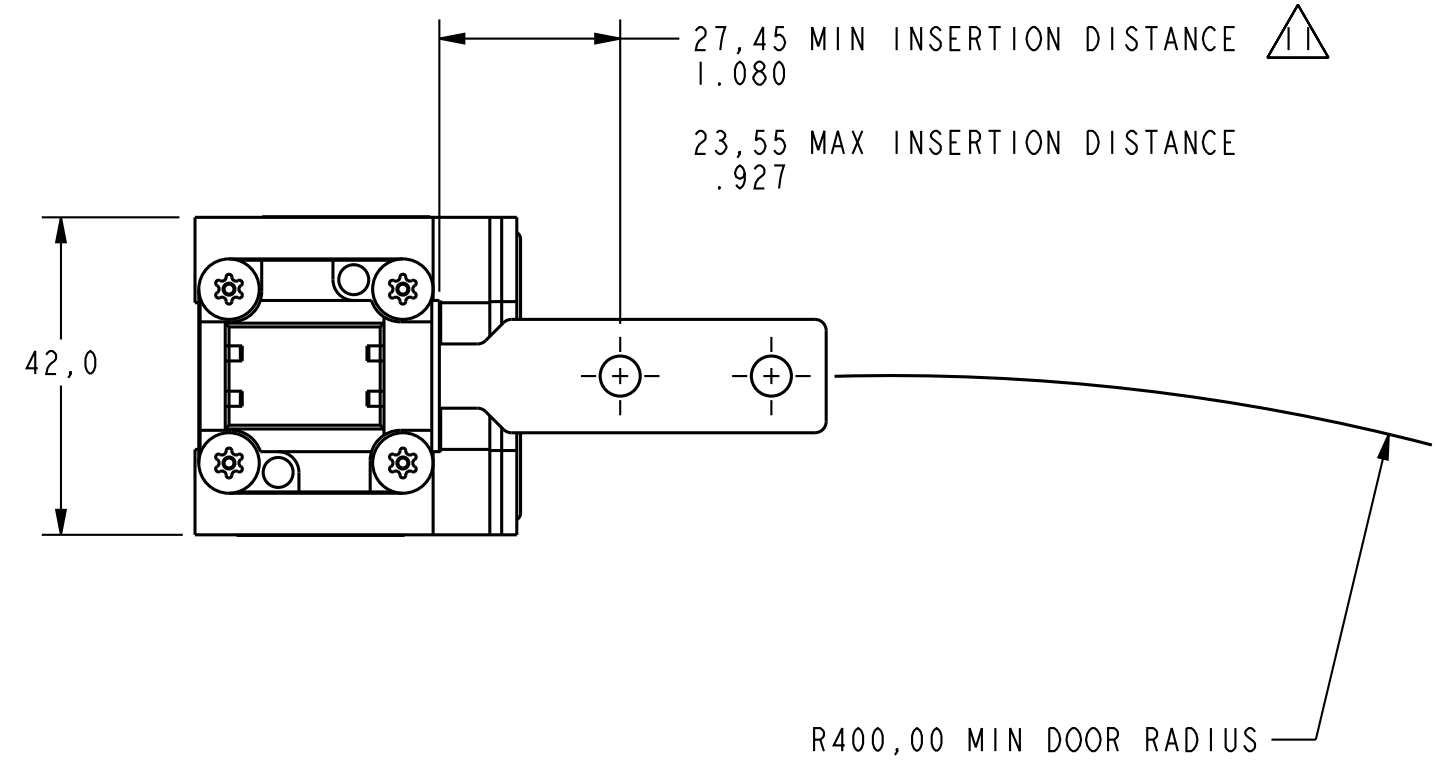
SWITCH - LIMIT

CATALOG LISTING

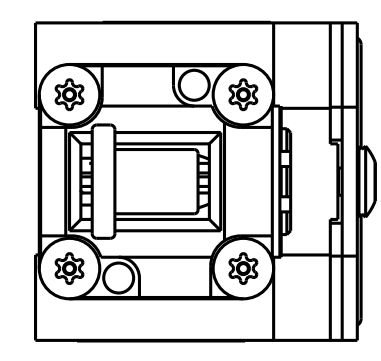
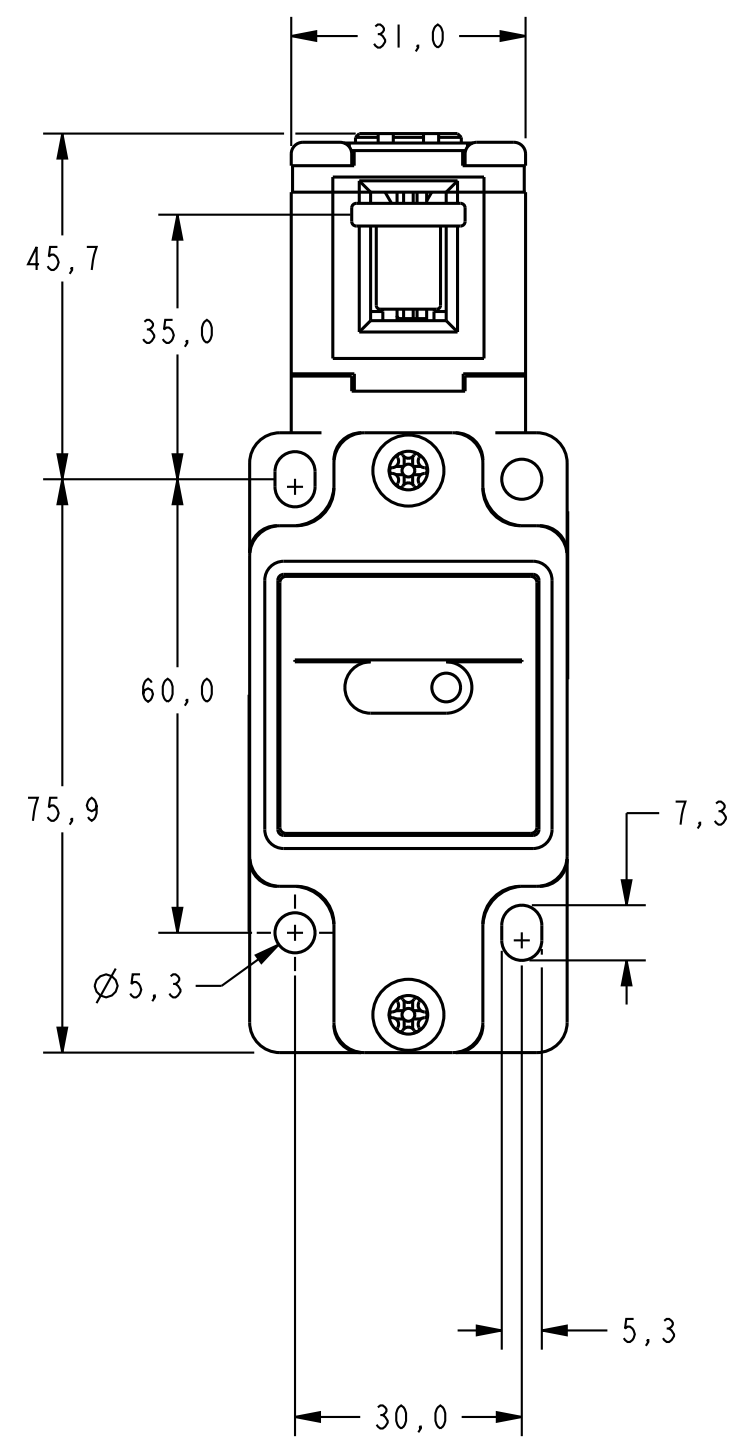
GK SERIES CHART 3

FED. MFG. CODE 91929

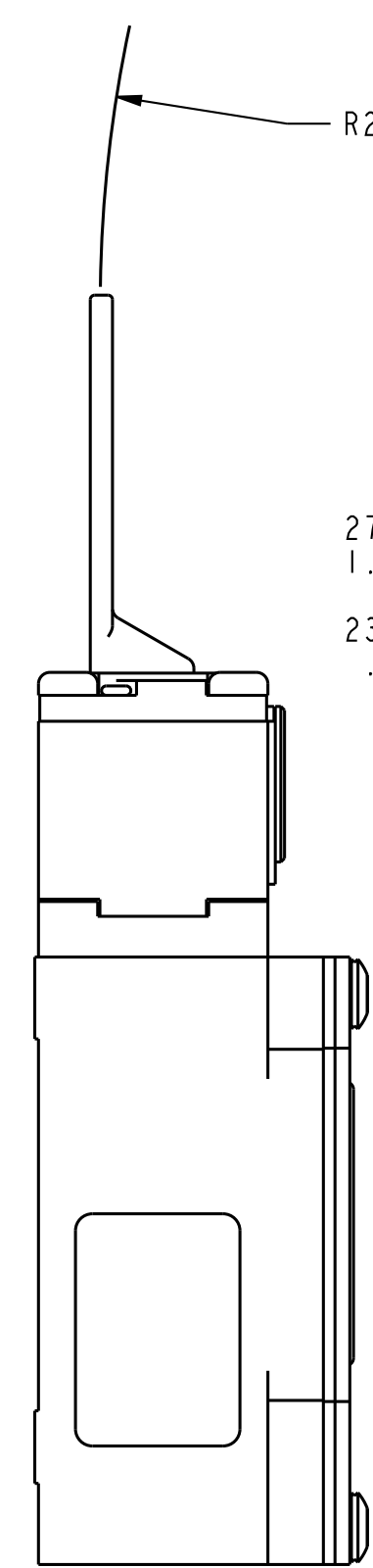
P.T.C./CAD 30
 DRAWN MAM 28 AUG 98
 CHECK DVM
 REVISIONS
 L 0083578
 M 0094570
 120CT12
 21SEP06
 CHECK CMH
 120CT12
 1 OF 8
 RELEASE NO. PR-23758
 REPLACES



FRONT ENTRY



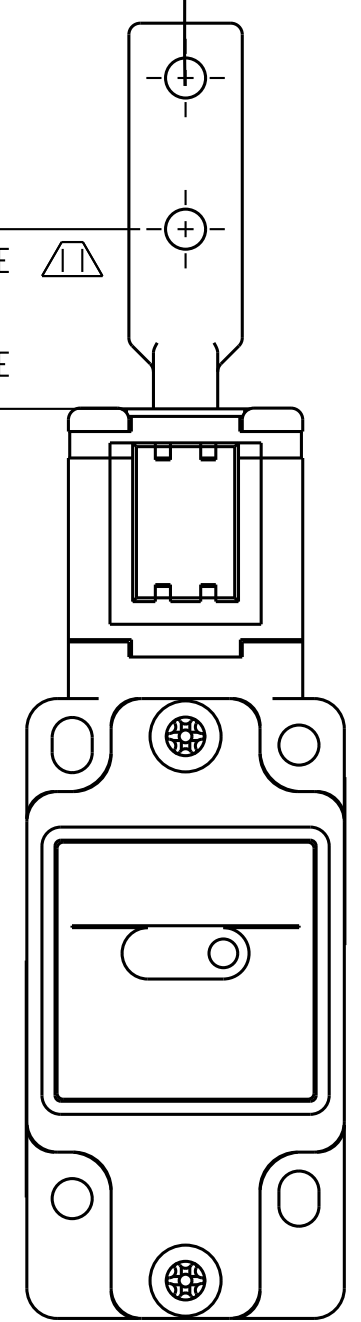
R400,00 MIN DOOR RADIUS



R250,00 MIN DOOR RADIUS

27,45 MIN INSERTION DISTANCE
1.080

23,55 MAX INSERTION DISTANCE
.927



TOP ENTRY

P.T.C./CAD 30
 DRAWN MAM 28 AUG 98
 CHECK JAF 12 MAY 99
 DVM 21 SEP 06
 CHECK CMH 12 OCT 12
 CMH 12 OCT 12
 RELEASE NO. PR-23758
 REPLACES
 M GK SERIES CHART 3
 DRAWING NUMBER
 ISSUE 3233
 REVISIONS
 L 0083578
 M 0094570
 12 OCT 12

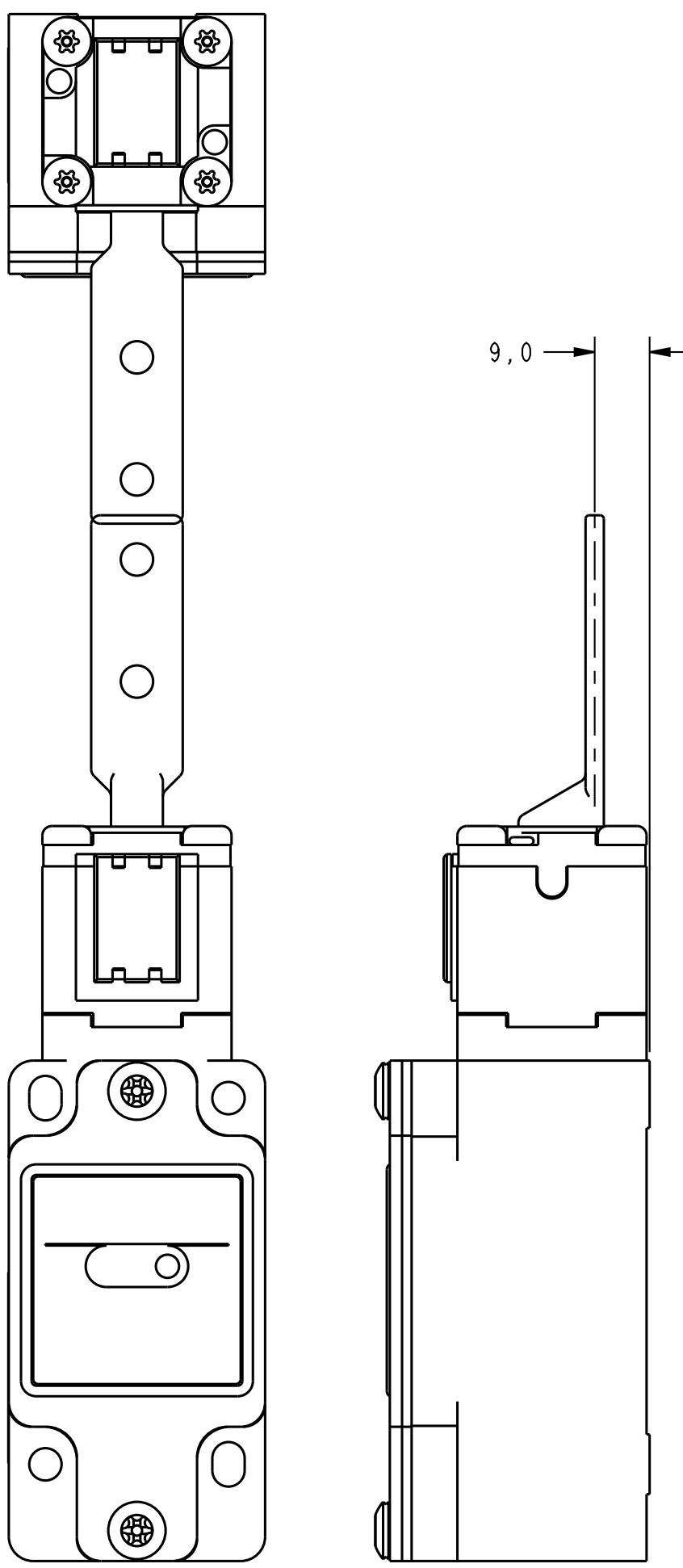
THIS DRAWING COVERS A PROPRIETARY ITEM AND IS THE PROPERTY OF MICRO SWITCH, A DIVISION OF HONEYWELL. THIS DRAWING IS NOT TO BE COPIED OR USED WITHOUT THE APPROVAL OF MICRO SWITCH.

MICRO SWITCH
a Honeywell Division

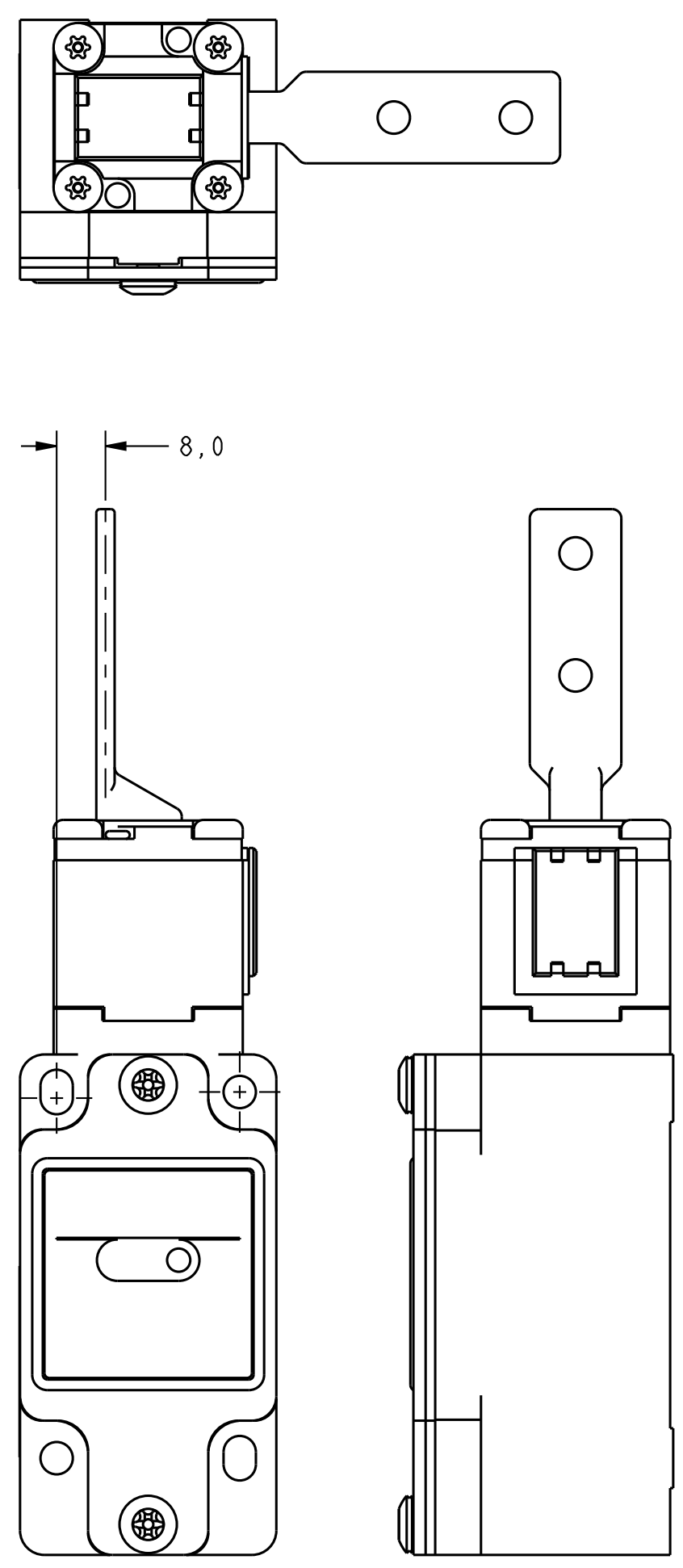
SWITCH - LIMIT

CATALOG LISTING
GK SERIES CHART 3

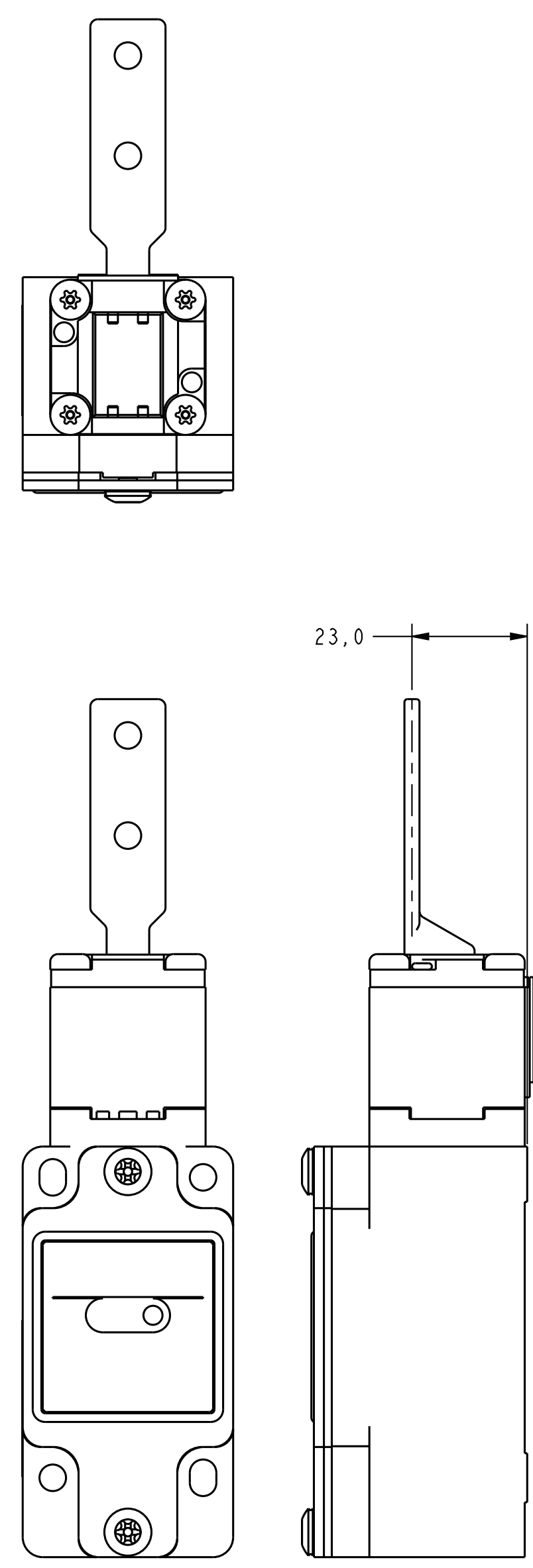
THIRD ANGLE PROJECTION		
SCALE FULL		
DO NOT SCALE PRINT		
UNLESS OTHERWISE SPECIFIED TOLERANCES ARE		
ONE PLACE	(.0)	± .030
TWO PLACES	(.00)	± .015
THREE PLACES	(.000)	± .005
ANGLES		±
WEIGHT APPROX .5 KG / 1LB		



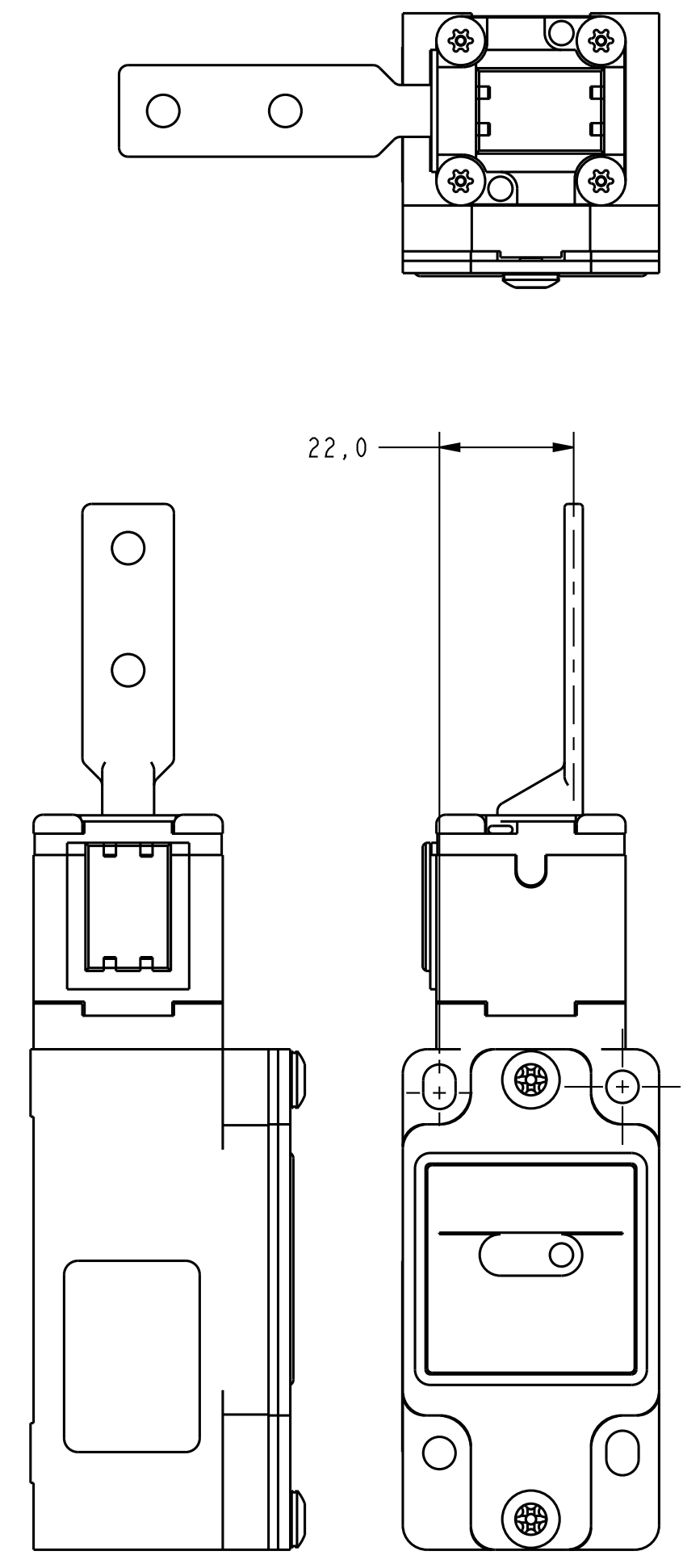
HEAD CODE L



HEAD CODE M



HEAD CODE N



HEAD CODE P

P.T.C./CAD 30
 DRAWN MAM 31 AUG 98 CHECK JAF 12MAY99
 CHECK DVM 21SEP06
 CHECK CMH 12OCT12
 RELEASE NO. PR-23758
 REPLACES
 M GK SERIES CHART 3
 DRAWING NUMBER
 ISSUE 3233
 PAGE 3 OF 8

REVISIONS

L	0083578	
M	0094570	10NOV11
		12OCT12

THIS DRAWING COVERS A PROPRIETARY ITEM AND IS THE PROPERTY OF MICRO SWITCH, A DIVISION OF HONEYWELL. THIS DRAWING IS NOT TO BE COPIED OR USED WITHOUT THE APPROVAL OF MICRO SWITCH.

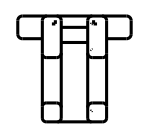
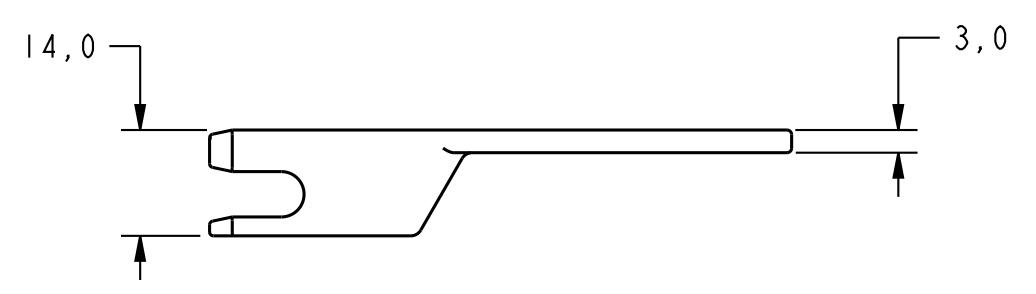
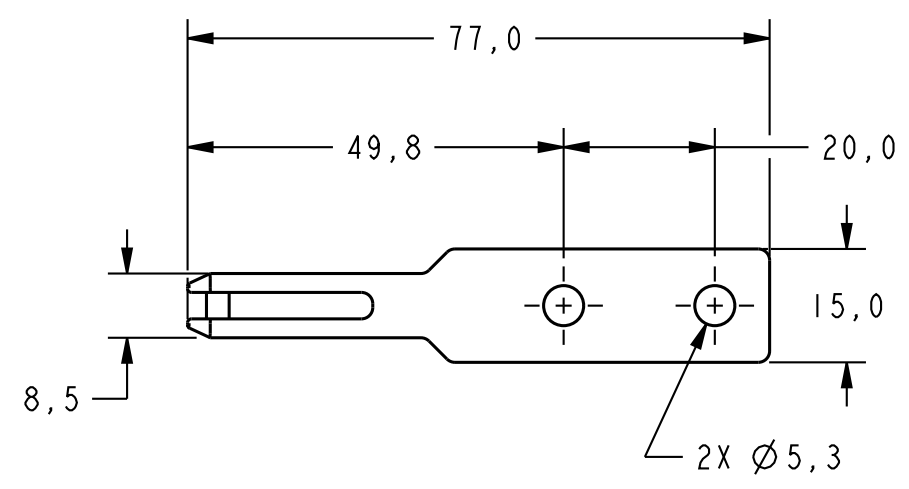
MICRO SWITCH
a Honeywell Division

SWITCH - LIMIT

CATALOG LISTING
GK SERIES CHART 3

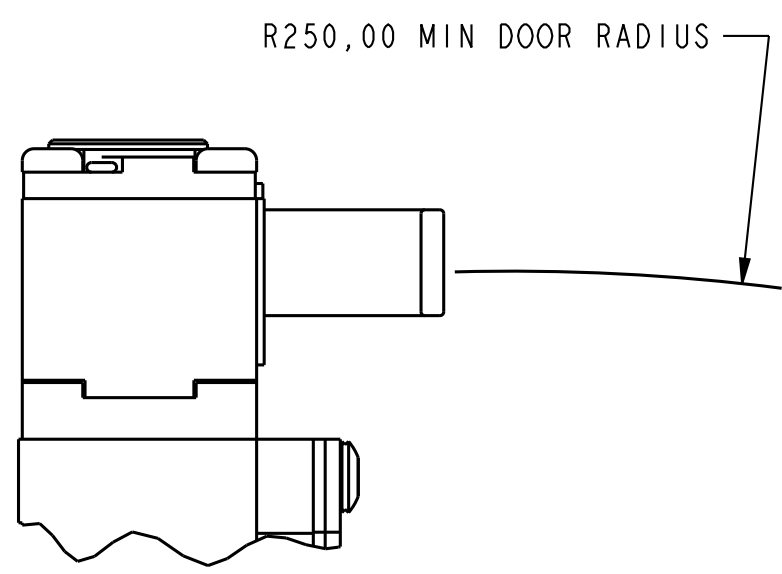
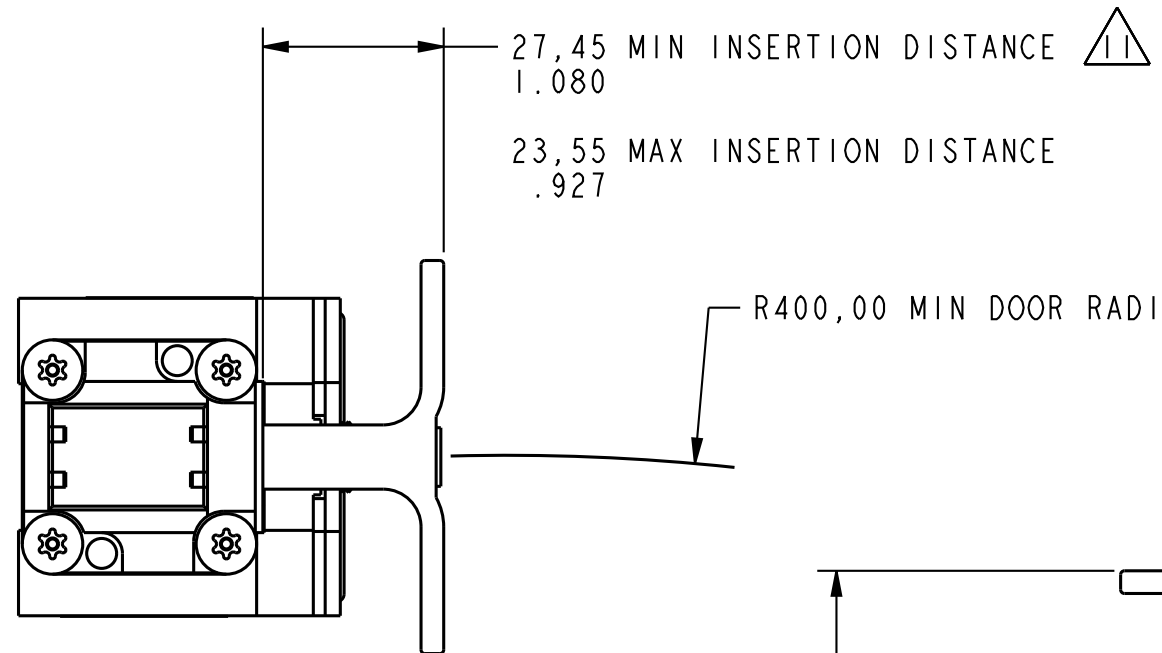
ANSI Y14.5M-1982 APPLIES
FED. MFG. CODE 91929

THIRD ANGLE PROJECTION		
SCALE FULL		
DO NOT SCALE PRINT		
UNLESS OTHERWISE SPECIFIED TOLERANCES ARE		
ONE PLACE	(.0)	±.030
TWO PLACES	(.00)	±.015
THREE PLACES	(.000)	±.005
ANGLES		±
WEIGHT APPROX .5 HG / 1 LB		

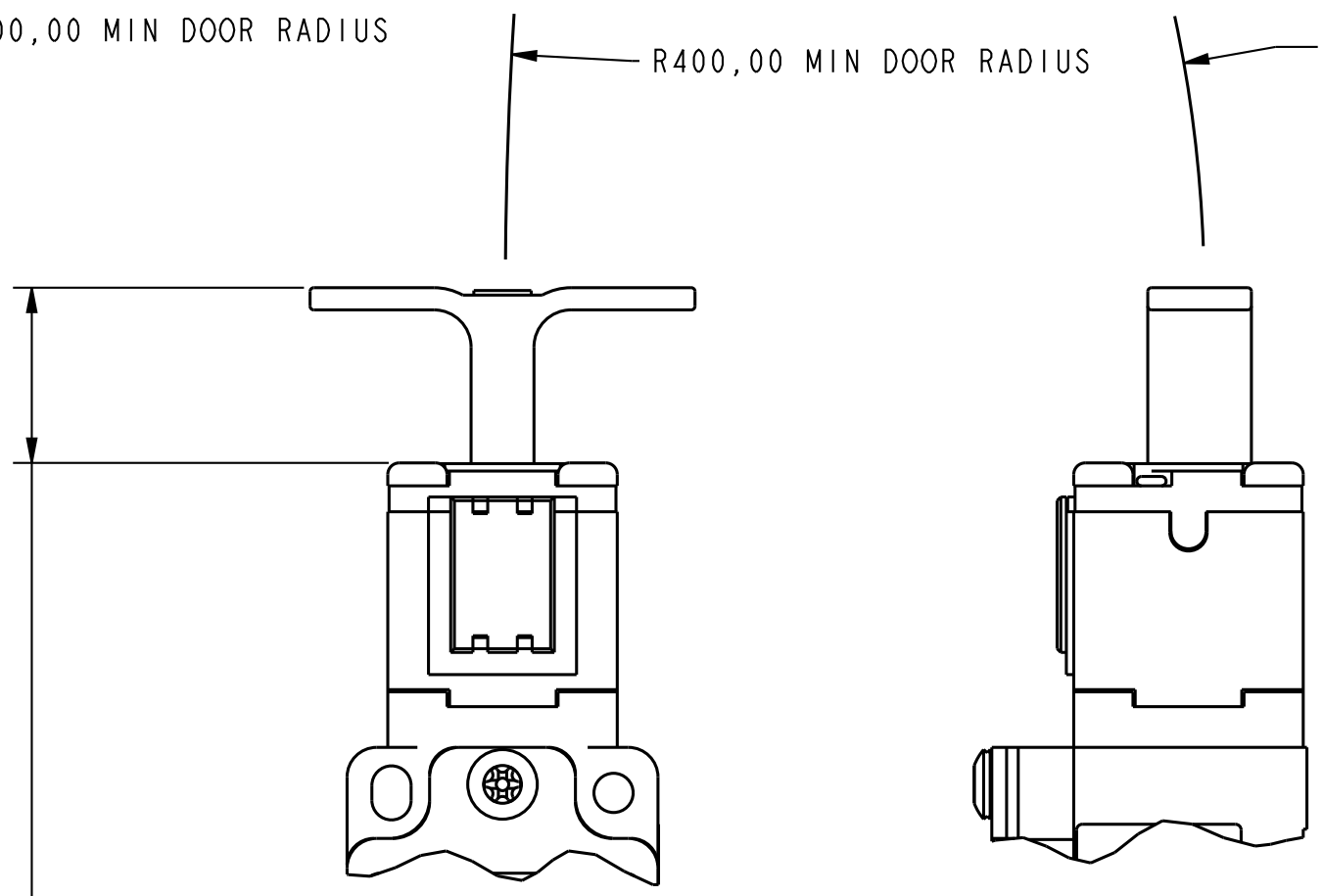


KEY CODE 6

P.T.C./CAD 30
 DRAWN MAM 31 AUG 98 CHECK JAF
 CHECK DVM 12MAY99
 CHECK DVM 21SEP06
 CHECK CMH 12OCT12
 RELEASE NO. PR-23758
 REPLACES
 GK SERIES CHART 3
 PAGE 4 OF 8
 ISSUE 3233
 DRAWING NUMBER
 REVISIONS
 L 0083578
 M 0094570
 12OCT12

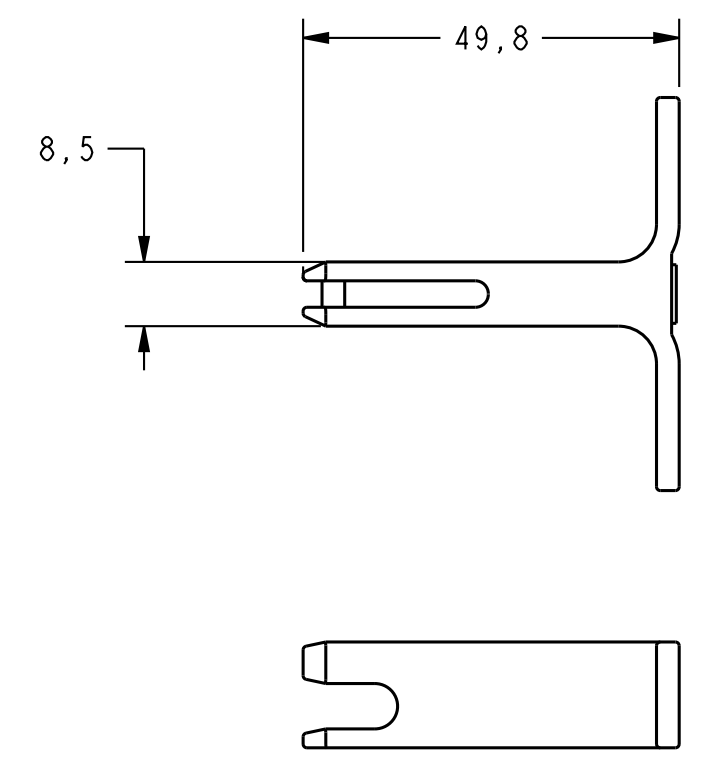
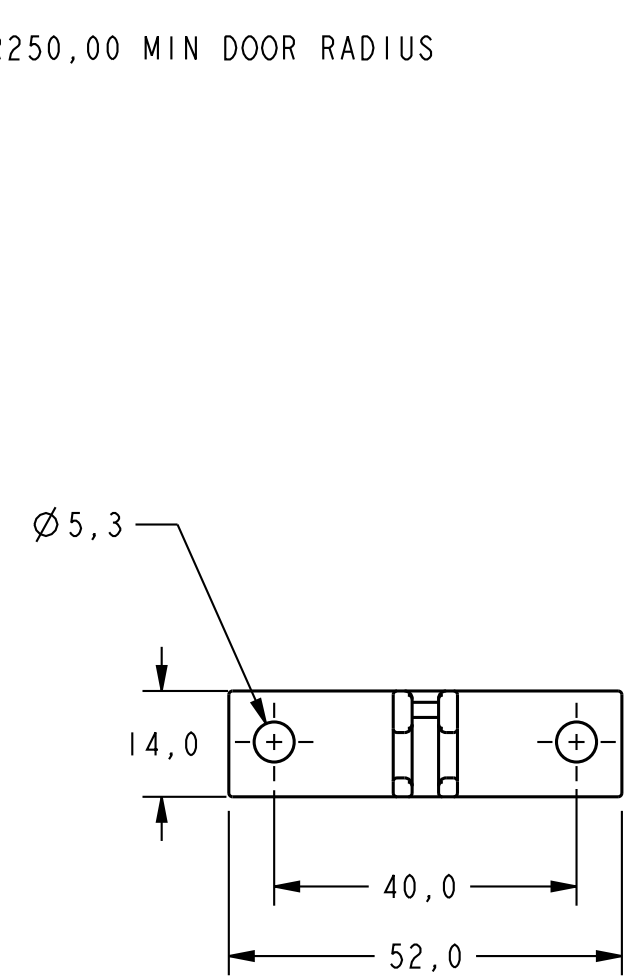


FRONT ENTRY



27,45 MIN INSERTION DISTANCE 1.080
 23,55 MAX INSERTION DISTANCE .927
 TOP ENTRY

KEY CODE 7

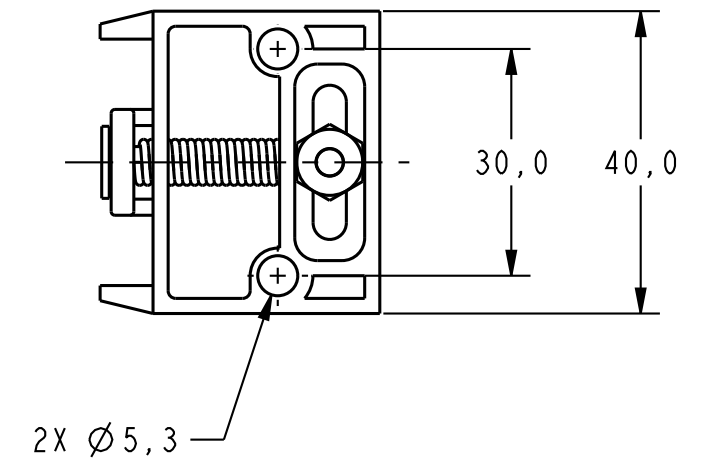
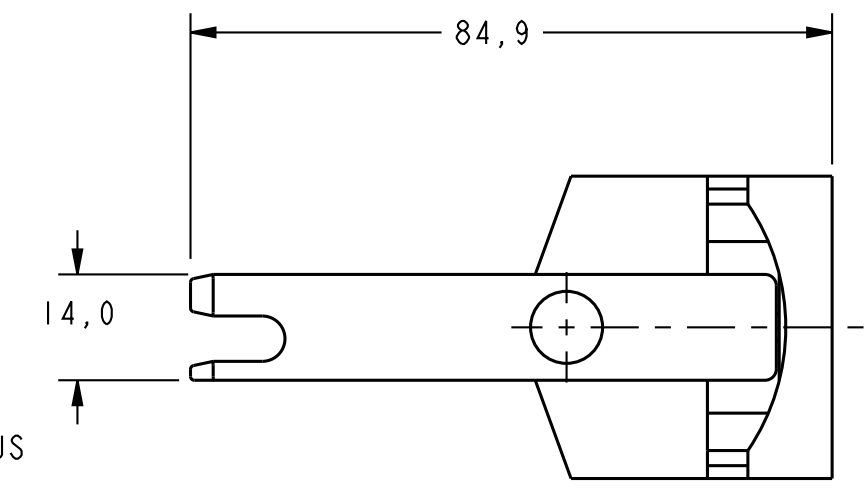
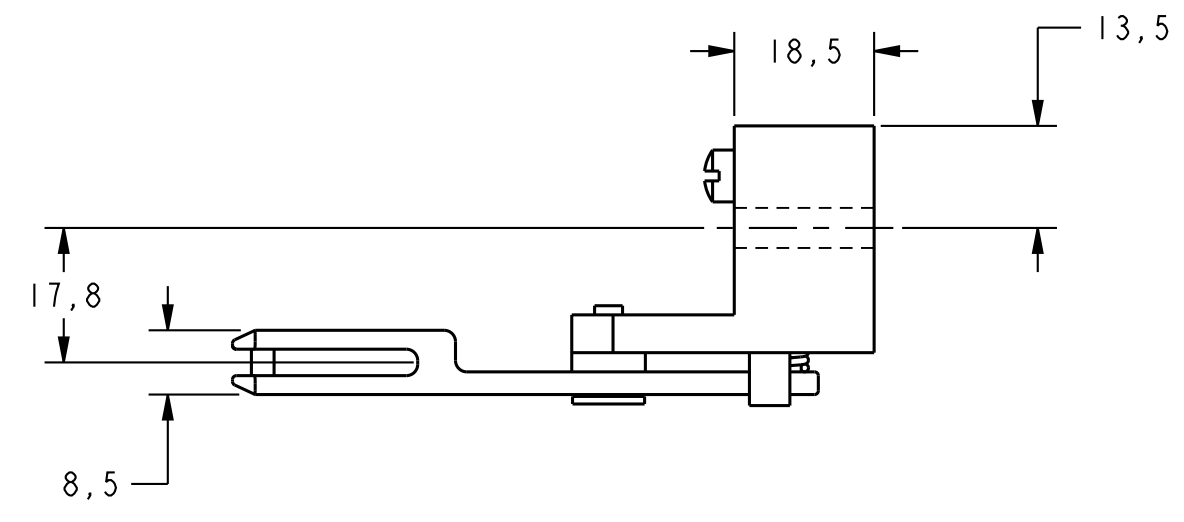
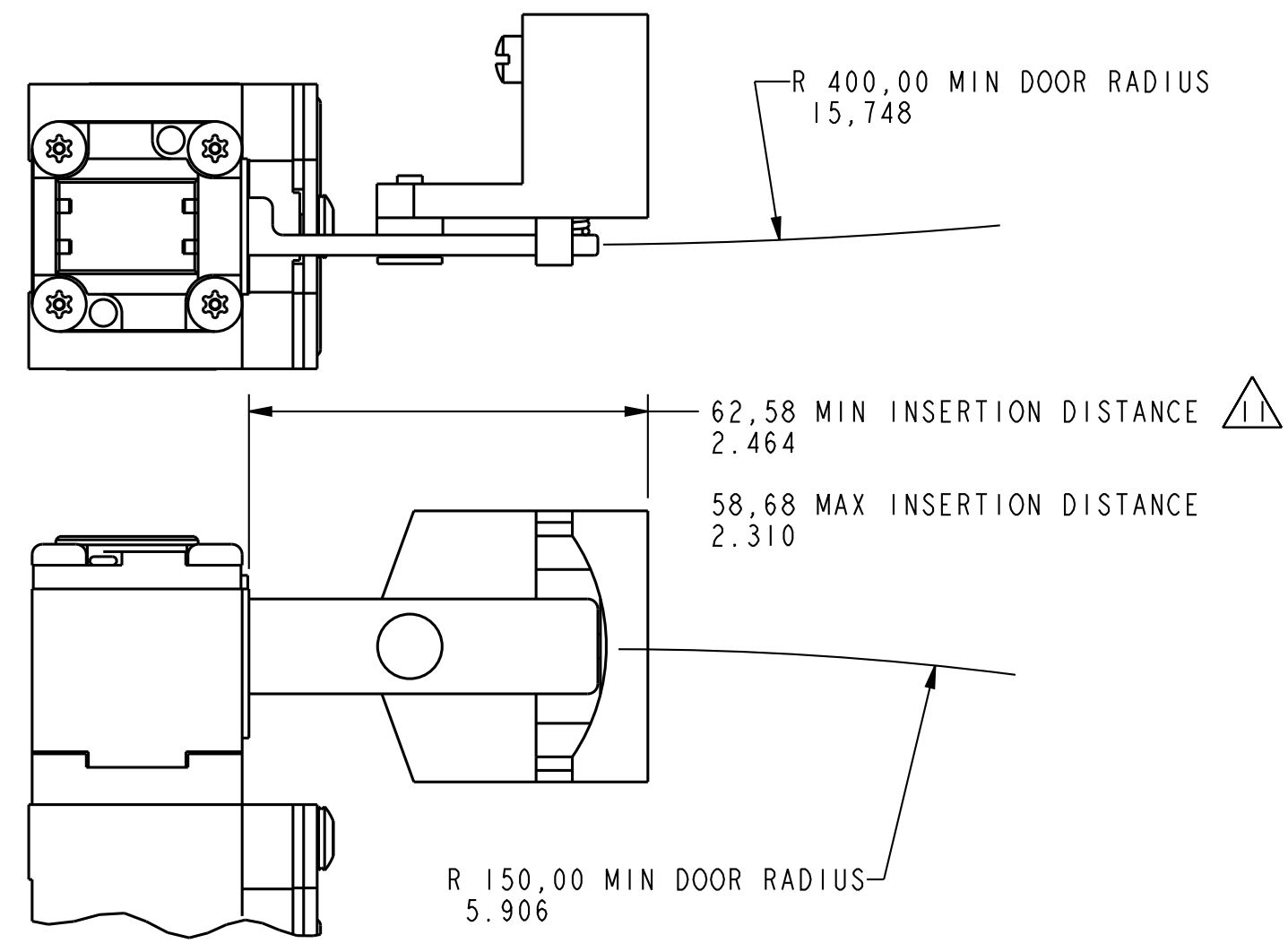


THIRD ANGLE PROJECTION	
SCALE FULL	
DO NOT SCALE PRINT	
UNLESS OTHERWISE SPECIFIED TOLERANCES ARE	
ONE PLACE	(.0) ± .030
TWO PLACES	(.00) ± .015
THREE PLACES	(.000) ± .005
ANGLES	±
WEIGHT APPROX .5 KG / 1 LB	

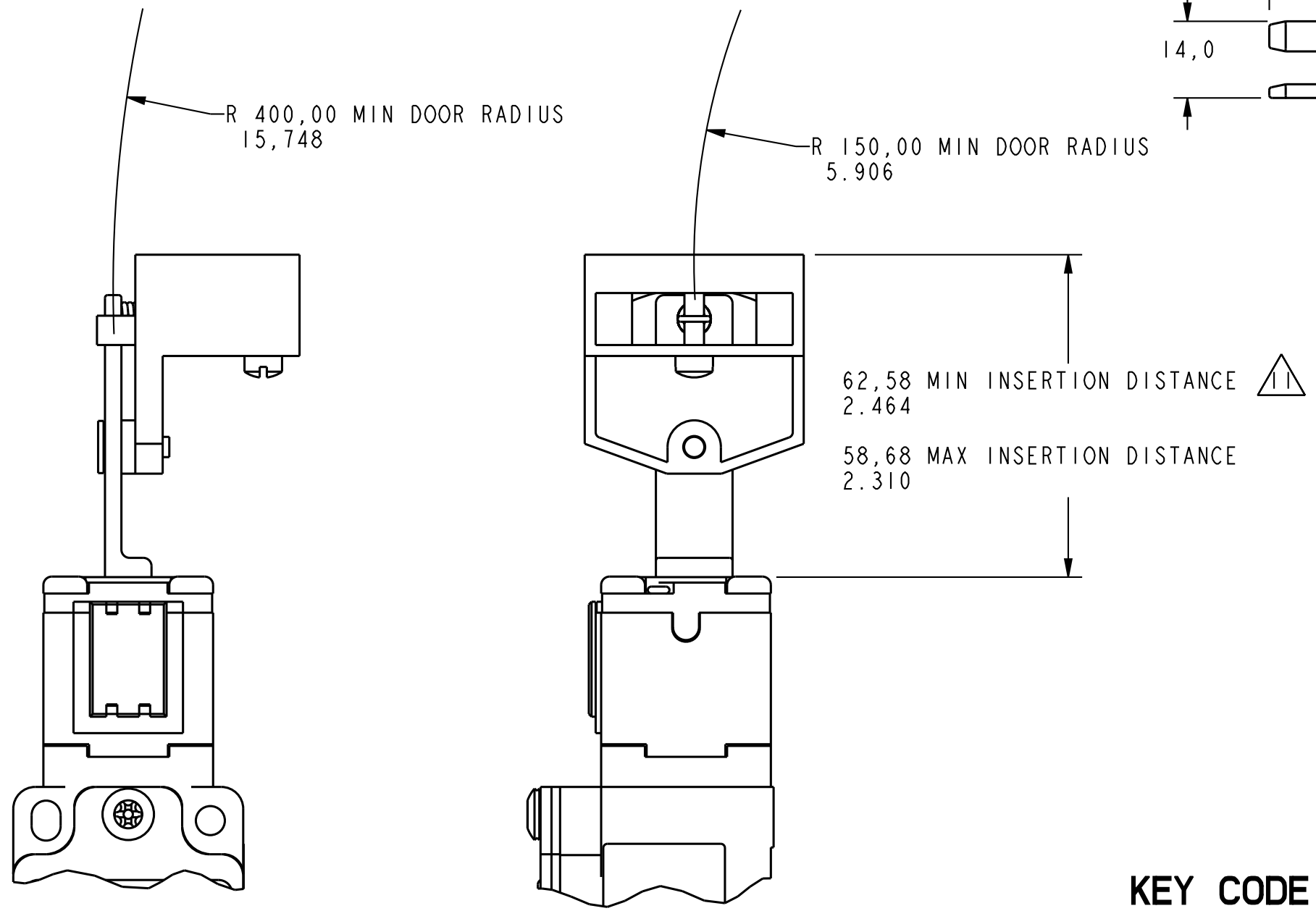
THIS DRAWING COVERS A PROPRIETARY ITEM AND IS THE PROPERTY OF MICRO SWITCH, A DIVISION OF HONEYWELL. THIS DRAWING IS NOT TO BE COPIED OR USED WITHOUT THE APPROVAL OF MICRO SWITCH.

 MICRO SWITCH a Honeywell Division	SWITCH - LIMIT	CATALOG LISTING GK SERIES CHART 3
--	----------------	--------------------------------------

ANSI Y14.5M-1982 APPLIES
 FED. MFG. CODE 91929



FRONT ENTRY



TOP ENTRY

KEY CODE 8

THIS DRAWING COVERS A PROPRIETARY ITEM AND IS THE PROPERTY OF MICRO SWITCH, A DIVISION OF HONEYWELL. THIS DRAWING IS NOT TO BE COPIED OR USED WITHOUT THE APPROVAL OF MICRO SWITCH.

MICRO SWITCH
a Honeywell Division

SWITCH - LIMIT

CATALOG LISTING
GK SERIES CHART 3

ANSI Y14.5M-1982 APPLIES

FED. MFG. CODE 91929

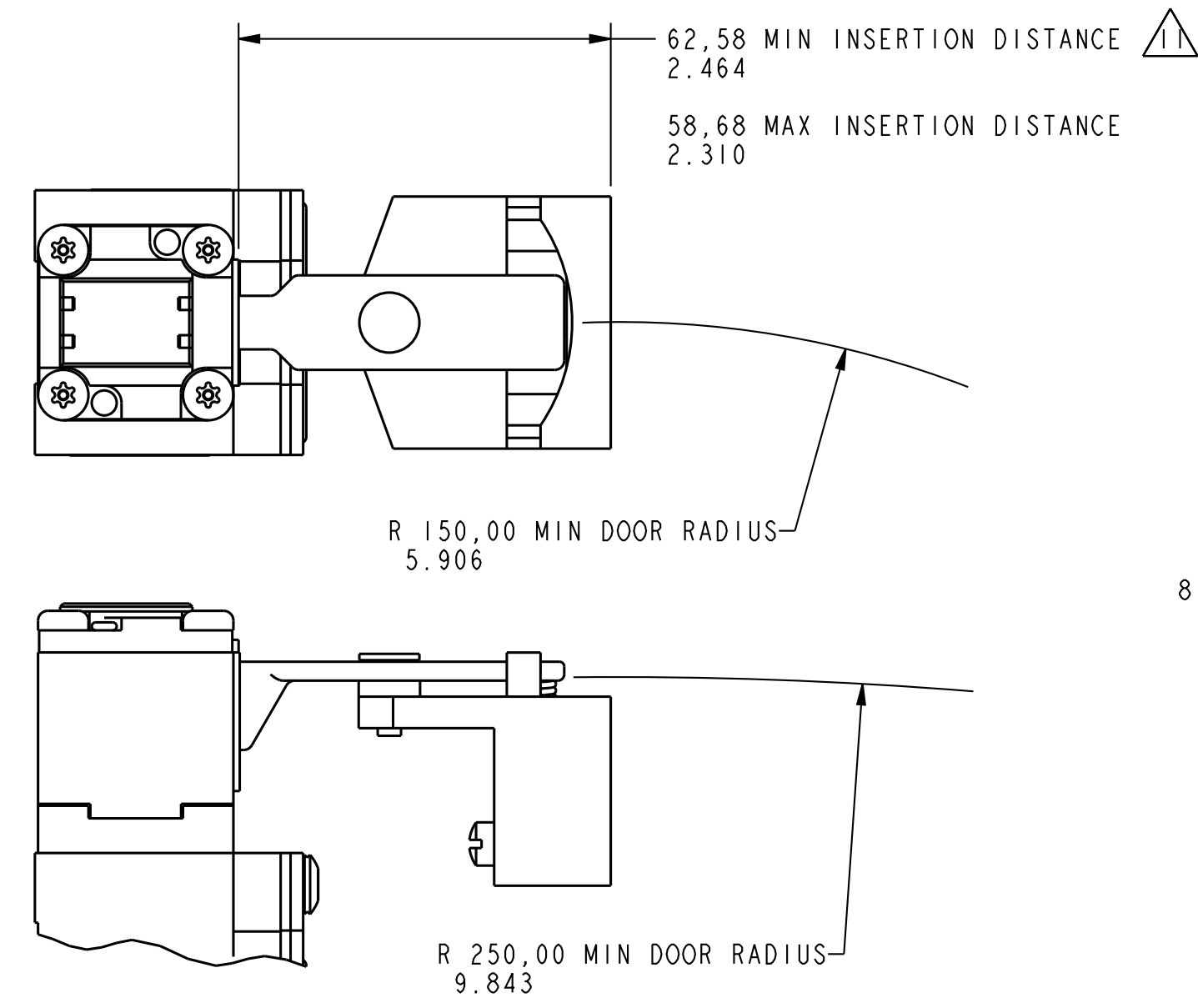
THIRD ANGLE PROJECTION		
SCALE FULL		
DO NOT SCALE PRINT		
UNLESS OTHERWISE SPECIFIED TOLERANCES ARE		
ONE PLACE	(.0)	±.030
TWO PLACES	(.00)	±.015
THREE PLACES	(.000)	±.005
ANGLES		±
WEIGHT APPROX .5 KG / 1 LB		

PTC/CAD 3D
DRAWN
MAM 1 SEP 98
CHECK
JAF

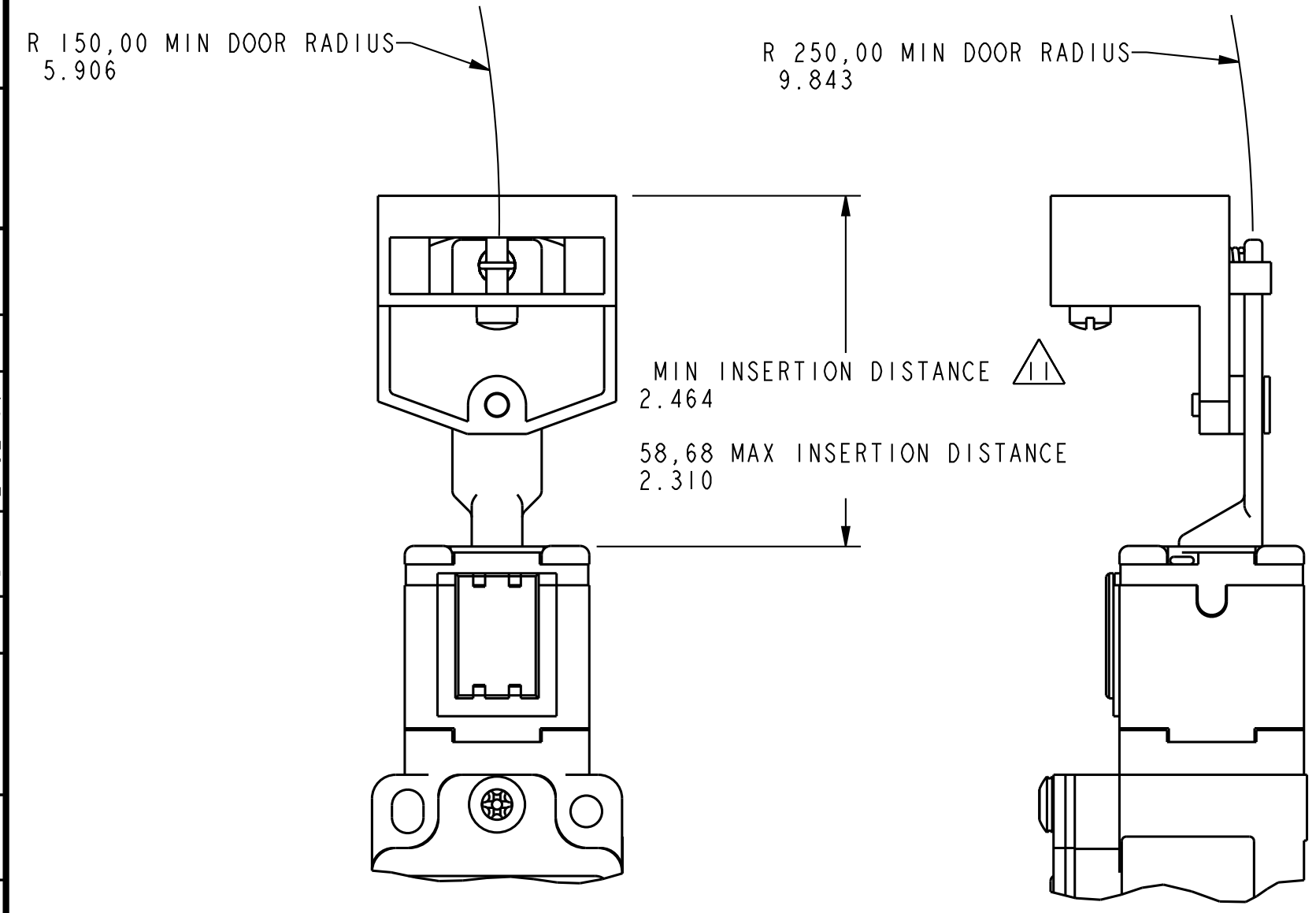
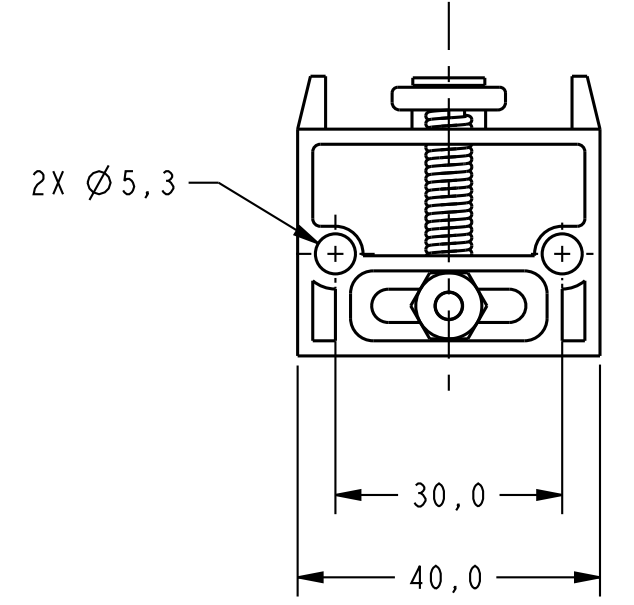
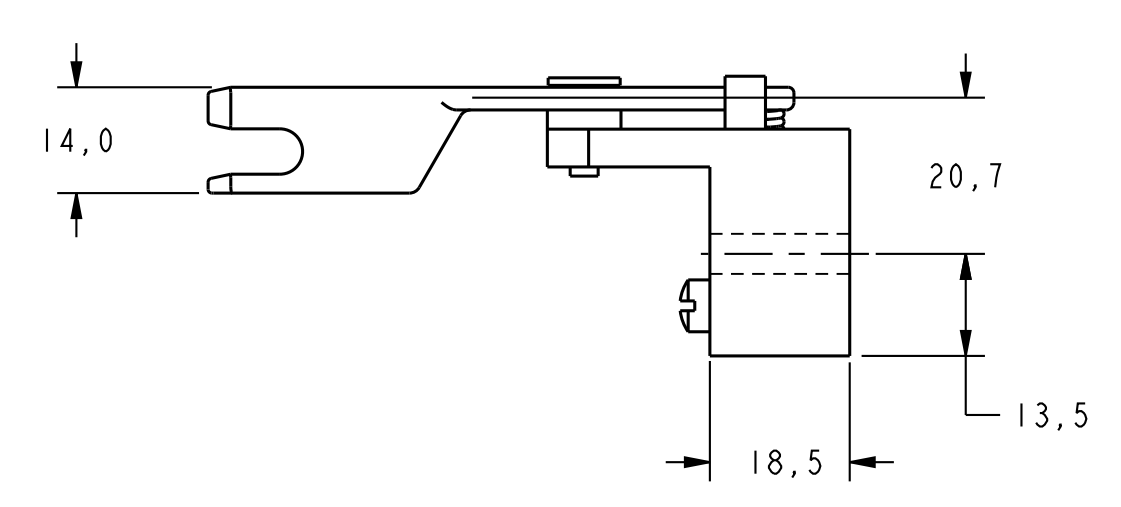
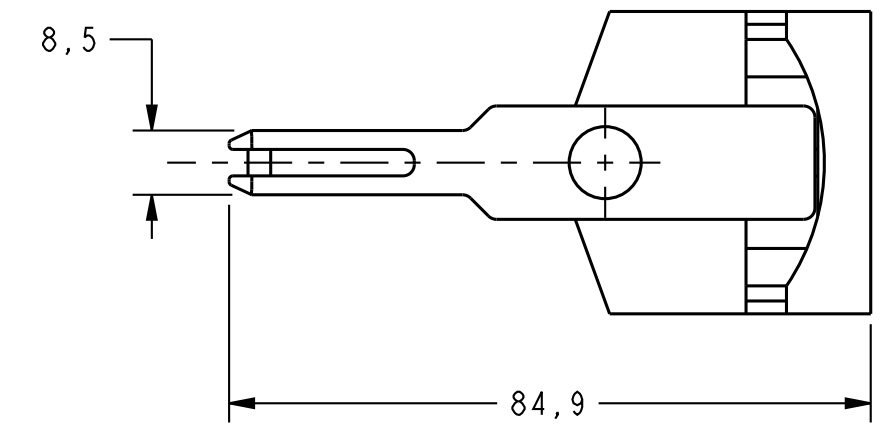
ISSUE
3233
DRAWING NUMBER
120CT12
CMH
CHECK
DVM

REVISIONS
L 0083578
M 0094570
120CT12

RELEASE NO. PR-23758
PAGE 5 OF 8
REPLACES



FRONT ENTRY



TOP ENTRY

KEY CODE 9

THIS DRAWING COVERS A PROPRIETARY ITEM AND IS THE PROPERTY OF MICRO SWITCH, A DIVISION OF HONEYWELL. THIS DRAWING IS NOT TO BE COPIED OR USED WITHOUT THE APPROVAL OF MICRO SWITCH.

MICRO SWITCH
a Honeywell Division

SWITCH - LIMIT

CATALOG LISTING
GK SERIES CHART 3

ANSI Y14.5M-1982 APPLIES

FED. MFG. CODE 91929

THIRD ANGLE PROJECTION		
SCALE FULL		
DO NOT SCALE PRINT		
UNLESS OTHERWISE SPECIFIED TOLERANCES ARE		
ONE PLACE	(.0)	± .030
TWO PLACES	(.00)	± .015
THREE PLACES	(.000)	± .005
ANGLES		±
WEIGHT APPROX .5 KG / 1 LB		

P.T.C./CAD 30
 DRAWN MAM 1 SEP 98
 CHECK JAF 1 SEP 98
 DVM 21 SEP 98
 CHECK CMH 12 OCT 12
 CMH 12 OCT 12
 RELEASE NO. PR-23758
 PAGE 6 OF 8
 GK SERIES CHART 3
 REPLACES

ISSUE	32	33
DRAWING NUMBER		

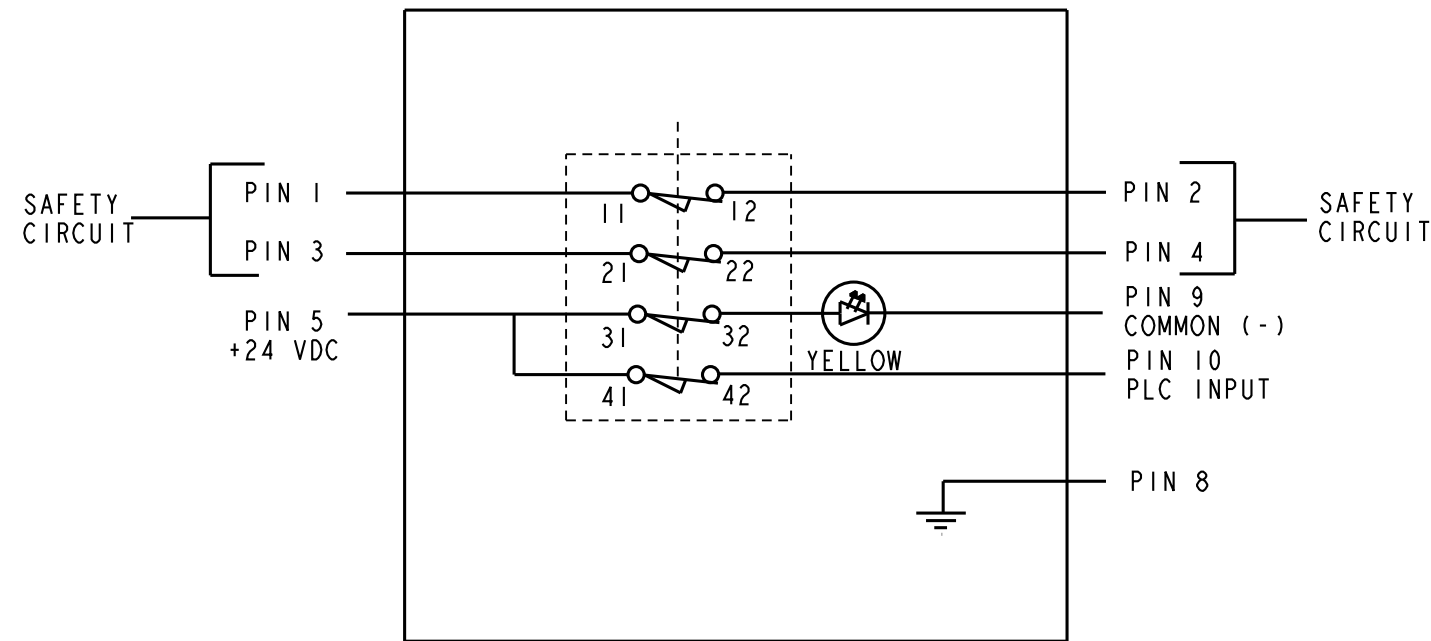
REVISIONS		
L	0083578	
M	0094570	

CATALOG LISTING **GK SERIES CHART 3** PAGE 7 OF 8
 ISSUE **33** CMH
 REVISIONS
 L 0083578 MBH 10NOV11
 M 0094570 SBH 12OCT12
 DVM
 11 NOV 99
 JAF
 11 NOV 99
 LJK
 PTC/CAD 3D
 DRAWN

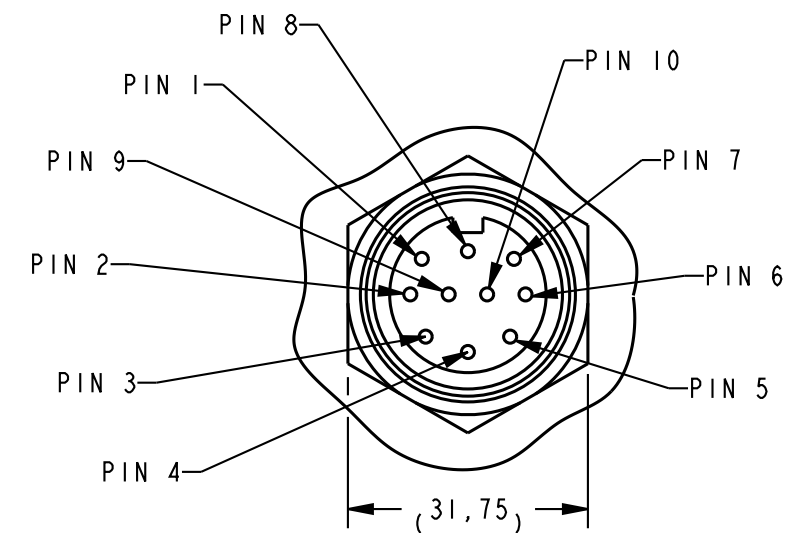
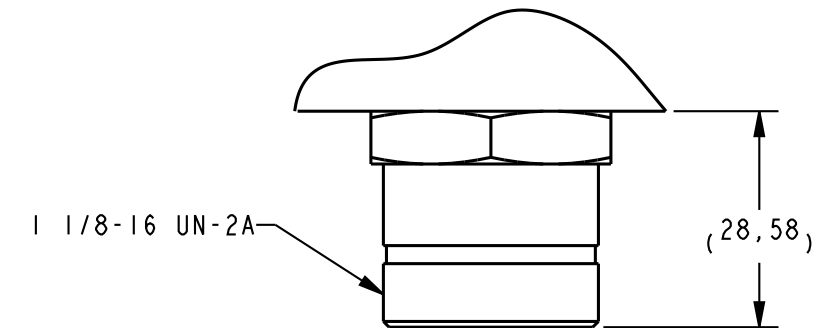
REPLACES
 12OCT12
 12OCT12
 CHECK
 21SEP06
 21SEP06
 CHECK
 11 NOV 99
 CHECK
 11 NOV 99
 CHECK

ANSI Y14.5M-1982 APPLIES

MODIFICATION CODE: F06



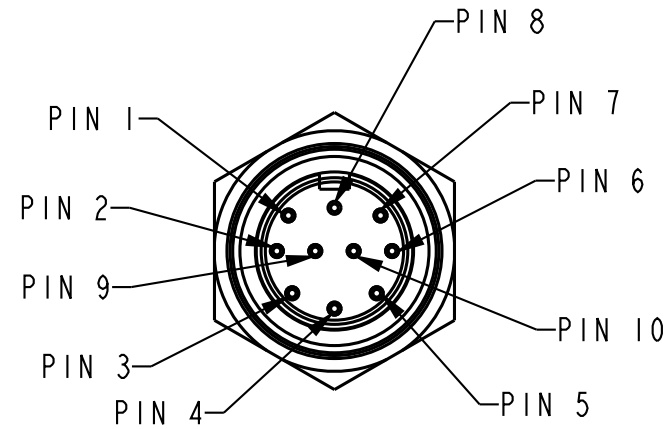
**SWITCH DIAGRAM STATE
SHOWN WITH KEY INSERTED**



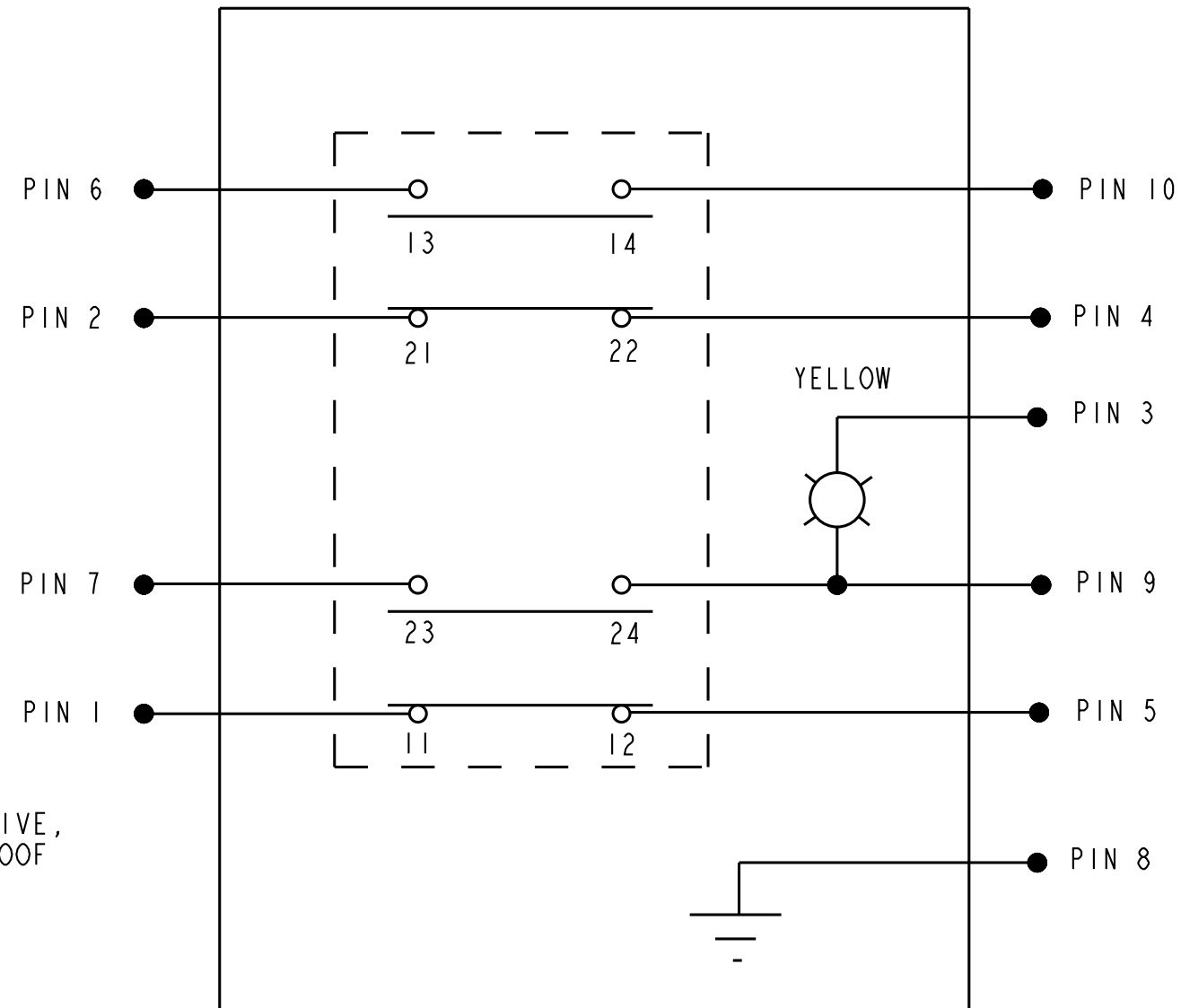
300V 2.5A
 BRAD HARRISON PART NO. 47205-22
 OR EQUIVALENT

THIRD ANGLE PROJECTION				
SCALE NONE				
DO NOT SCALE PRINT				
TOLERANCES				
APPLY TO DESIGN UNITS. CONVERSIONS ARE ONLY FOR REFERENCE. UNLESS NOTED, TOLERANCES ARE :				
	DIM.	TOL	DIM.	TOL
	mm	mm/in	in	mm/in
NO PLACES	X	1/.04	X.X	0.8/.03
ONE PLACE	X.X	0.4/.016	X.XX	0.38/.015
TWO PLACES	X.XX	0.15/.006	X.XXX	0.13/.005
THREE PLACES				
ANGLES				
SI METRIC		US CUSTOMARY		
DESIGN UNITS	<input checked="" type="checkbox"/>	<input type="checkbox"/>		
WEIGHT APPROX .5KG / 1LB				

MODIFICATION CODE: FW




10-PIN CONNECTOR 

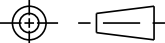


**BASIC SWITCH TO 10-PIN CONNECTOR
CIRCUIT DIAGRAM
DIAGRAM SHOWN WITH KEY INSERTED**

NOTES

- 1 - THE TWO COVER SCREWS ARE COMBINATION DRIVE, THE FOUR HEAD SCREWS ARE T-15 TAMPER PROOF TORX DRIVE (DRIVER BIT IS PROVIDED)
-  10-PIN CONNECTOR, BRAD HARRISON PART NO. 47205-22 OR EQUIVALENT

CATALOG LISTING **GK SERIES CHART 3** PAGE 8 OF 8
 ISSUE **33** CMH 12OCT12 RELEASE NO. PR-23758 REPLACES
 REVISIONS
 L 0083578 MBH 10NOV11
 M 0094570 SBH 12OCT12
 07 JAN 09 CHECK
 RS 18 JAN 00 CHECK
 SAV 18 JAN 00 CHECK
 GRT 18 JAN 00 CHECK
 PTC/CAD 3D DRAWN
 ANSI Y14.5M-1982 APPLIES

THIRD ANGLE PROJECTION				
				
SCALE NONE				
DO NOT SCALE PRINT				
TOLERANCES				
APPLY TO DESIGN UNITS. CONVERSIONS ARE ONLY FOR REFERENCE. UNLESS NOTED, TOLERANCES ARE :				
	DIM.	TOL	DIM.	TOL
	mm	mm/in	in	mm/in
NO PLACES	X	1/.04	X.X	0.8/.03
ONE PLACE	X.X	0.4/.016	X.XX	0.38/.015
TWO PLACES	X.XX	0.15/.006	X.XXX	0.13/.005
THREE PLACES				
ANGLES				
SI METRIC		US CUSTOMARY		
DESIGN UNITS	<input checked="" type="checkbox"/>		<input type="checkbox"/>	
WEIGHT	0,4 KG / 1LB			