

MICRO SWITCH

A DIVISION OF ANNAPOLIS-HONEYWELL REGULATOR COMPANY
FREEPORT, ILLINOIS

**ASSEMBLY-
TOGGLE SWITCH**

FED. MFR. CODE 91929

(M) 6AT2
ISSUE 9

6AT2

M

DRAWING
NUMBER

15

ISSUE

12/13

REPLACES

RELEASE NO.

CHECK 6.22.55

CHECK 7.3.55

CHECK 5.0.55

CHECK 7.3.55

CHECK 7.3.55

CHECK 7.3.55

CHECK 7.3.55

CHECK 7.3.55

CHECK 7.3.55

CHECK 7.3.55

CHECK 7.3.55

CHECK 7.3.55

CHECK 7.3.55

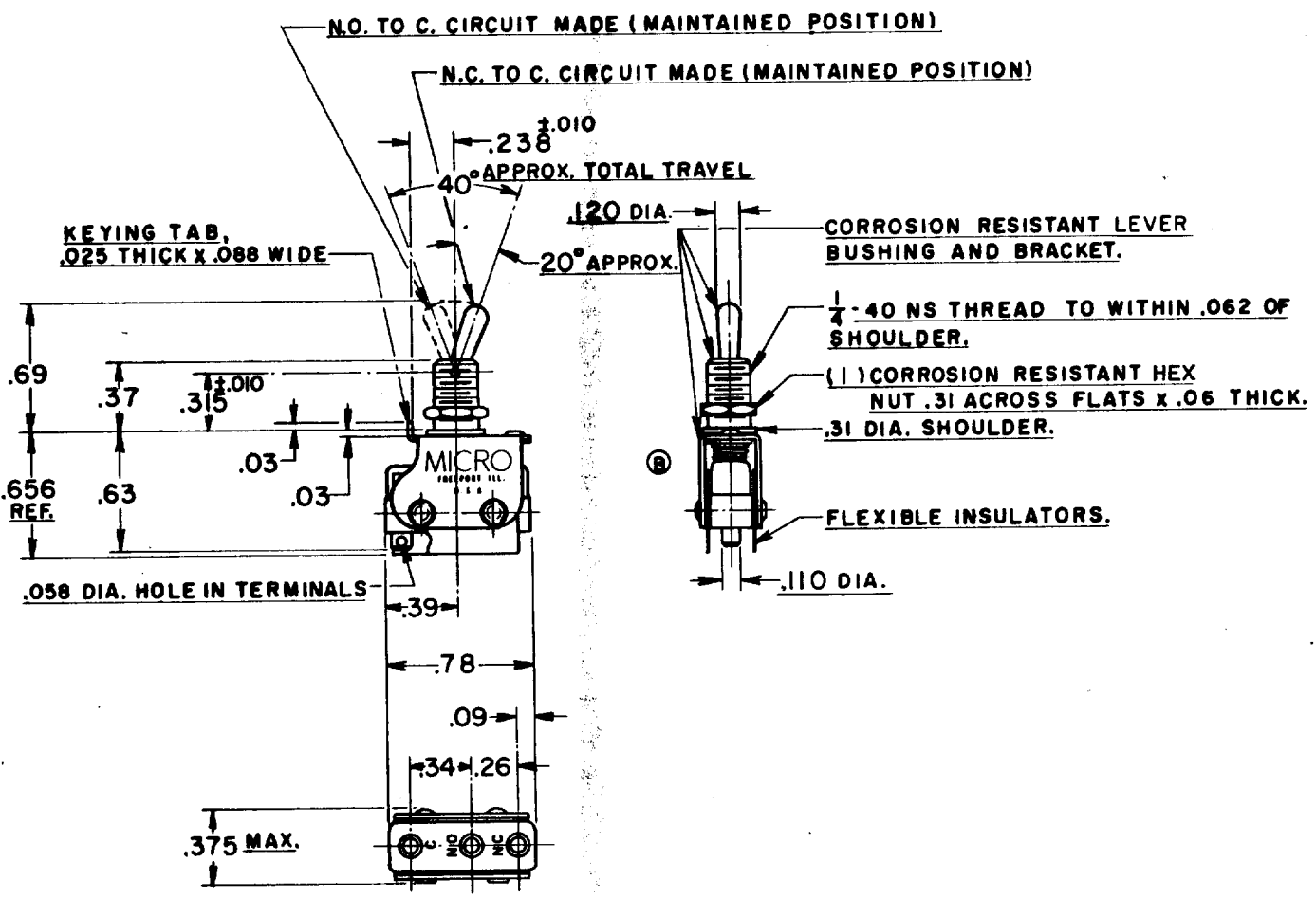
CHECK 7.3.55

CHECK 7.3.55

CHECK 7.3.55

CHECK 7.3.55

CHECK 7.3.55



NOTE-

1- UNIT INCLUDES (1) CAT. LIST. IISM106 BASIC SWITCH.

2- TERMINALS ARE PLATED FOR SOLDERING.

THIS DRAWING COVERS A PROPRIETARY ITEM AND IS THE PROPERTY OF MICRO SWITCH, A DIVISION OF HONEYWELL. THIS DRAWING IS NOT TO BE COPIED OR USED WITHOUT THE APPROVAL OF MICRO SWITCH.

CHARACTERISTICS	ELECTRICAL DATA	SCALE FULL
	CONTACT ARRANGEMENT S. P. D. T.	DO NOT SCALE PRINT
	BREAK DISTANCE .010 MIN.	UNLESS OTHERWISE SPECIFIED DIMENSIONS ARE IN INCHES
	250 VAC ----- 5 AMP	TOLERANCES ARE:
	30 VOLTS DC RATING	ONE PLACE (.0) ±.030
	INDUCTIVE ----- SEA LEVEL ----- 3 AMP	TWO PLACE (.00) ±.015
	50,000 FT. ----- 2.5 AMP	THREE PLACE (.000) ±.005
	RESISTIVE ----- SEA LEVEL ----- 5 AMP	ANGLES ±
	50,000 FT. ----- 5 AMP	WEIGHT --- .018 LB.
	MAXIMUM INRUSH ----- 24 AMP	

74-86
DRAWN
R. L. Z. 22 SEPT 55
CHECK 7.3.55