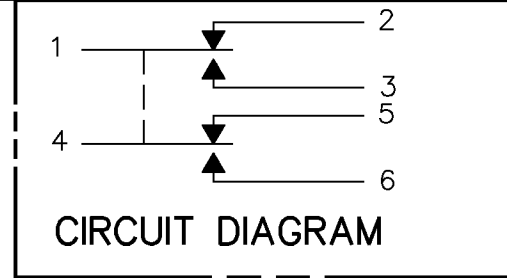


HONEYWELL
PART NUMBER
622EN143-6
FAA-PMA

REV	DOCUMENT	CHANGED BY	CHECK
4	0011614	KSR 04MAR05	AK



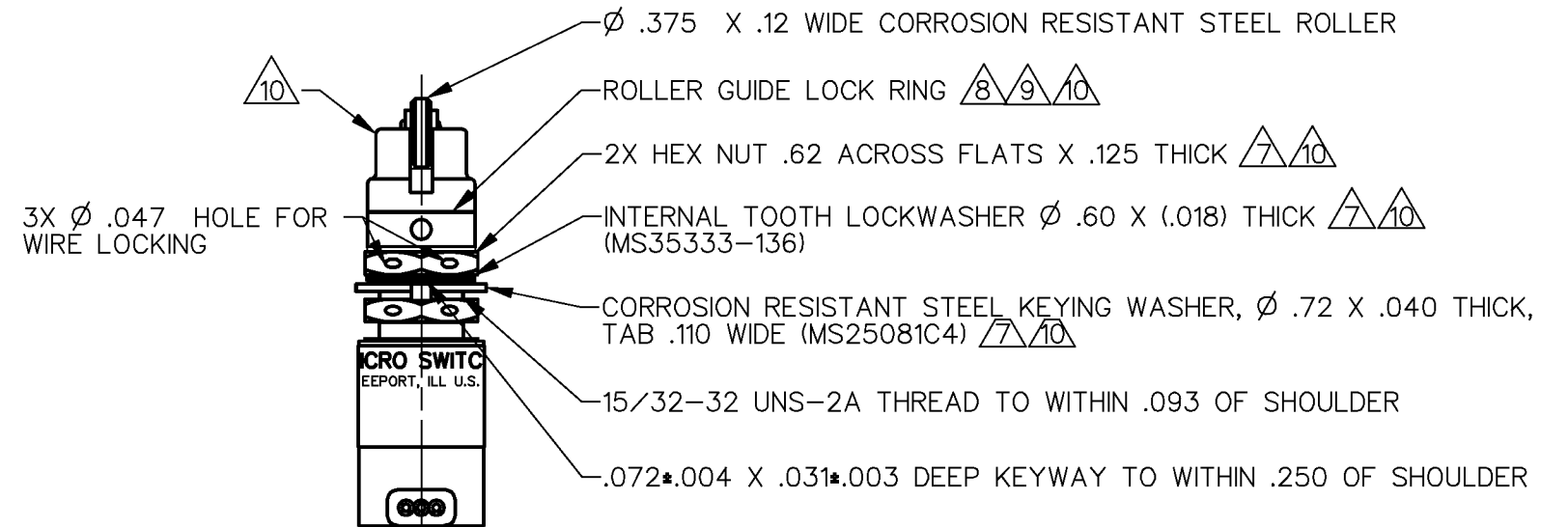
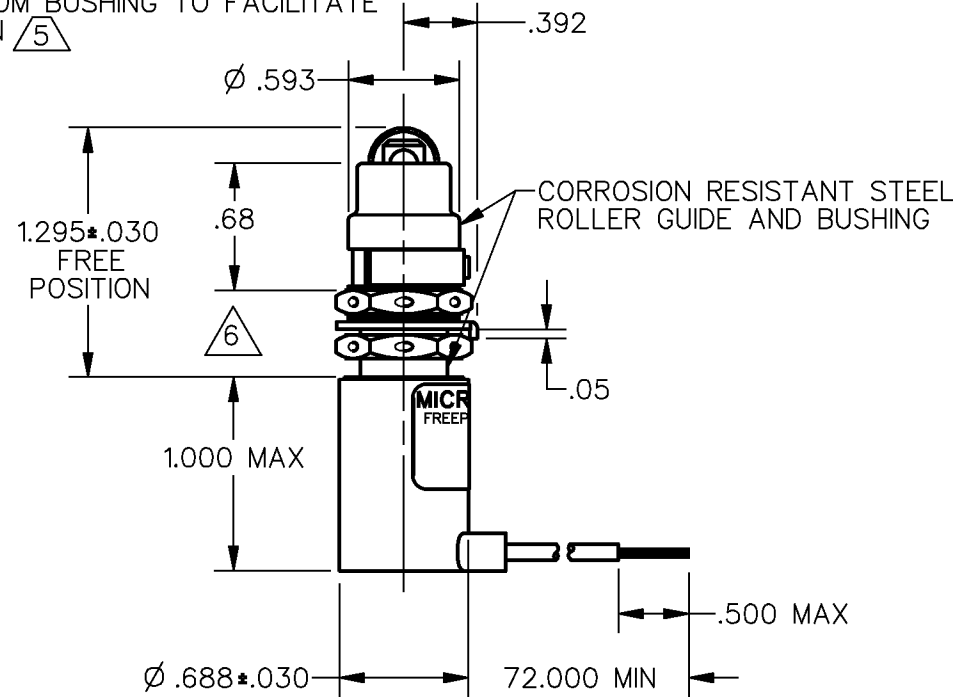
- NOTES
- 1 - CORROSION RESISTANT STEEL ENCLOSURE
 - 2 - SWITCH SEALED PER MIL-S-8805 SYMBOL 4
 - 3 - CIRCUIT DIAGRAM, CATALOG LISTING, DATE CODE, FED. MFG. CODE AND FAA-PMA ARE SHOWN ON NAMEPLATE
 - 4 - COINCIDENCE OF OPERATING AND RELEASING POINTS: .010 INCH OF PLUNGER TRAVEL TO ADJUST ROLLER DIRECTION REMOVE ROLLER GUIDE LOCK RING, SCREW ROLLER GUIDE TO DESIRED DIRECTION, SECURE BY REPLACING ROLLER GUIDE LOCK RING
 - 5 - ROLLER GUIDE LOCATION CAN VARY BETWEEN .292 AND .450 WHILE MAINTAINING .125 MIN OVERTRAVEL
 - 6 - REPLACEMENT MOUNTING HARDWARE - PACKET 19PA9
 - 7 - REPLACEMENT ROLLER GUIDE AND LOCK RING - PACKET 15PA105
 - 8 - REPLACEMENT LOCK RING - PACKET 15PA107
 - 9 - HARDWARE MAY BE PACKAGED UNASSEMBLED PER MIL-S-8805
 - 10 - ELECTRICAL RATINGS, GOLD CONTACTS

LOAD	SEA LEVEL			50,000 FT	
	POWER CIRCUIT 28 V DC	ELECTRONIC LOGIC 5 V DC	LOW LEVEL 30mV DC OR PEAK AC	POWER CIRCUIT 28 V DC	ELECTRONIC LOGIC 5 V DC
RES	(A) 1.0	(A) 0.01	0.01	(A) 1.0	(A) 0.01
IND	0.5	---	---	0.5	---

- 12 - PLUNGER SEAL MATERIAL: ETHYLENE PROPYLENE
- 13 - SKYDROL RESISTANT CONSTRUCTION
- 14 - FOR MANUFACTURING DETAILS SEE ASSEMBLY DRAWING 622EN143-6 FOR FAA-PMA.

6X NO. 20 WIRE LEAD PER MIL-W-22759/7 MARKED WITH CIRCUIT IDENTIFICATION AND WIRE GAGE (1-20, 2-20, ETC) PER MIL-W-5088

ROLLER GUIDE MAY BE LOCKED IN INCREMENTS OF 45° AZIMUTH, IT MAY ALSO BE UNSCREWED AND REMOVED FROM BUSHING TO FACILITATE INSTALLATION 5



CHARACTERISTICS	
OPERATING FORCE	6 -12 LB
FULL OVERTRAVEL FORCE	30 LB MAX
RELEASE FORCE	4 LB MIN
PRETRAVEL	.040 MAX
DIFFERENTIAL TRAVEL	.020 MAX
OVERTRAVEL	.125 MIN

ELECTRICAL DATA 11	
CONTACT ARRANGEMENT	2X S P D T

DESIGN UNITS: INCH
TOLERANCES UNLESS NOTED:

NO PLACE	X	±	0.040
ONE PLACE	.X	±	0.030
TWO PLACE	.XX	±	0.015
THREE PLACE	.XXX	±	0.005
FOUR PLACE	.XXXX	±	0.0005
ANGLES		±	2

THIRD ANGLE PROJECTION

DRAWN	TSM	31JUL92
CHECK	AK	04MAR05
THIS DRAWING COVERS A PROPRIETARY ITEM AND IS THE PROPERTY OF HONEYWELL. THIS DRAWING IS NOT TO BE COPIED OR USED WITHOUT THE PERMISSION OF HONEYWELL.		
INTERPRET PER ASME Y14.5M-1994 OTHER HONEYWELL ENGINEERING STANDARDS MAY APPLY		
RASTER		

Honeywell			
TITLE SWITCH - ENCLOSED			
SIZE	TYPE	DRAWING NAME	REV
B	I	622EN143-6	4
SCALE	1:1	WEIGHT .50 LB	SHEET 1 OF 1