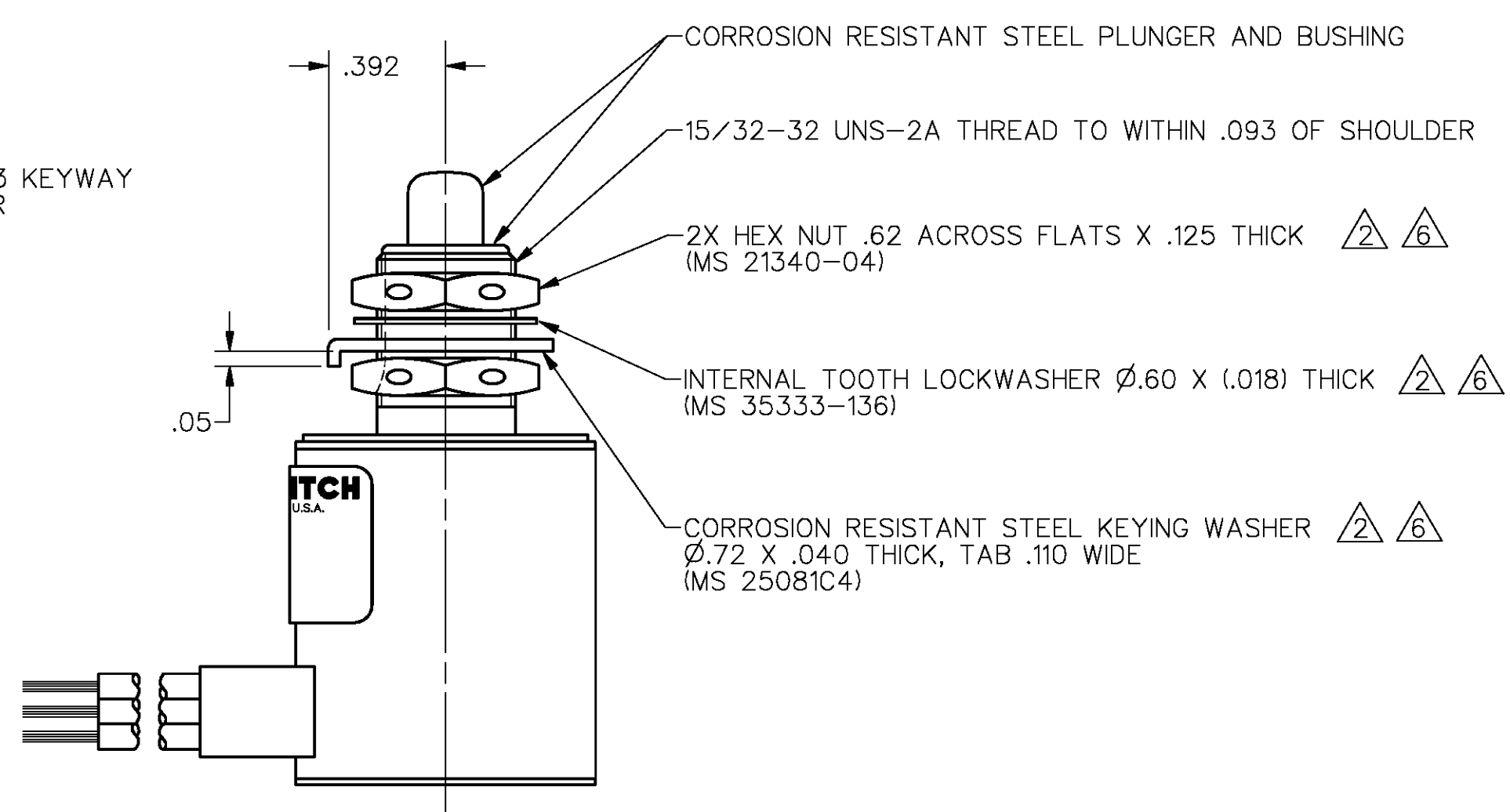
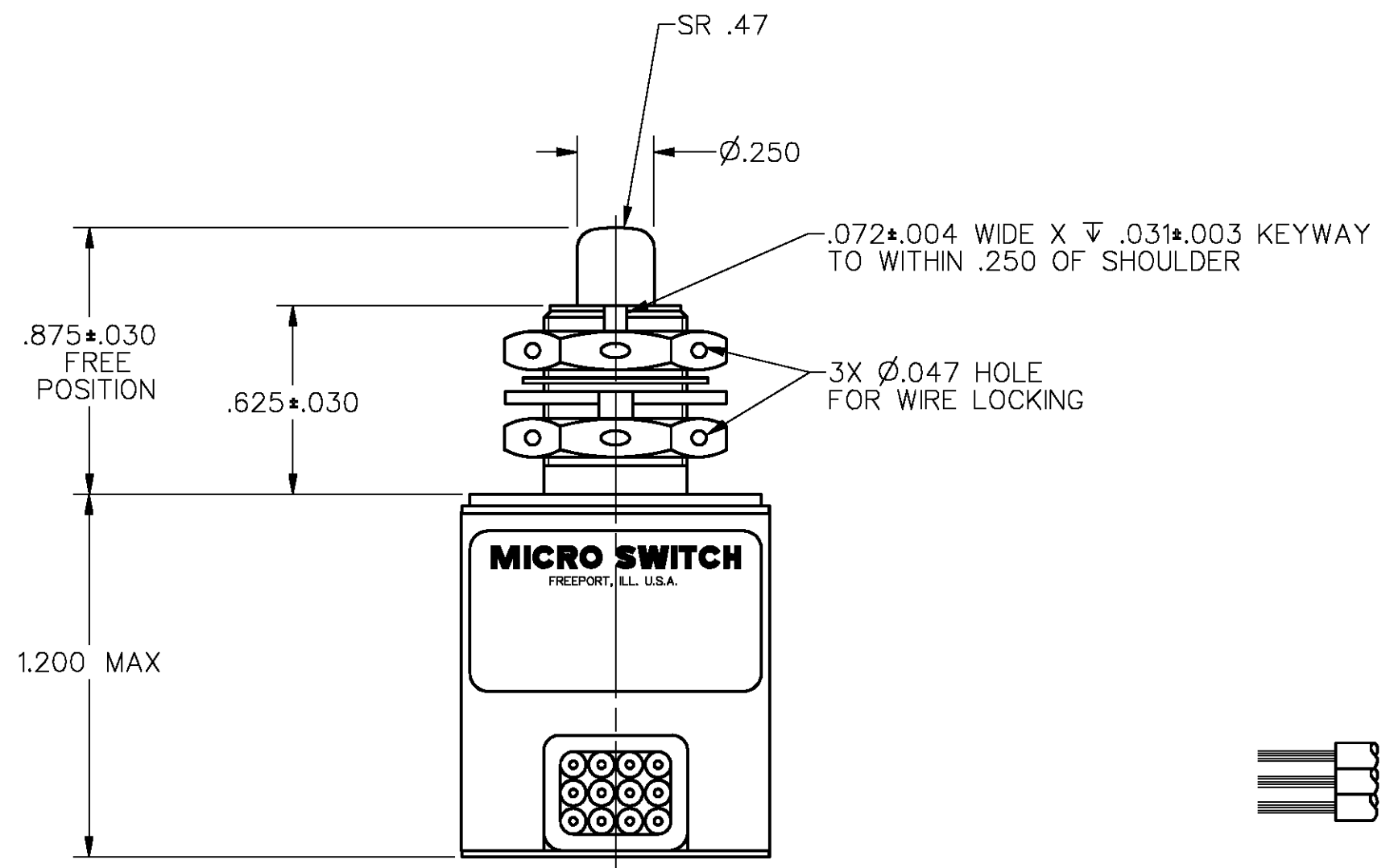
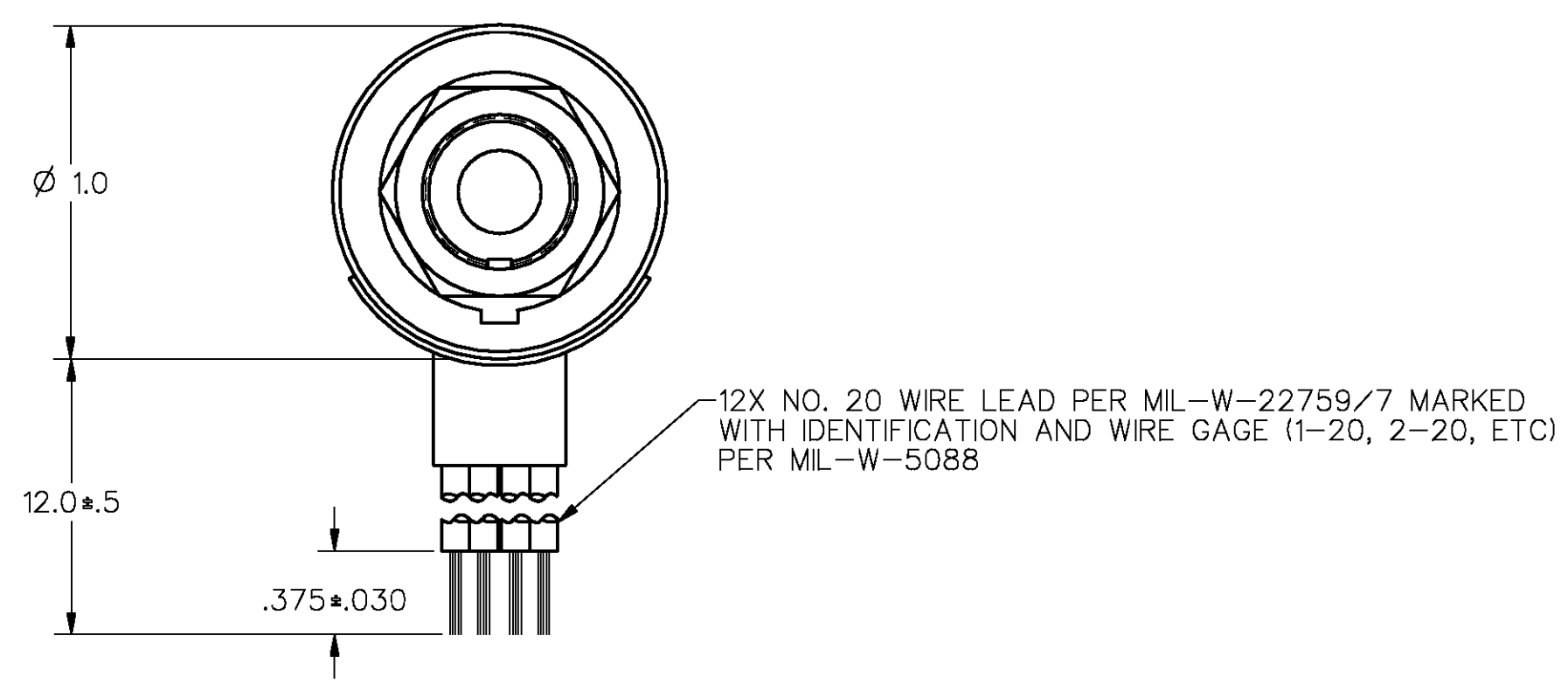
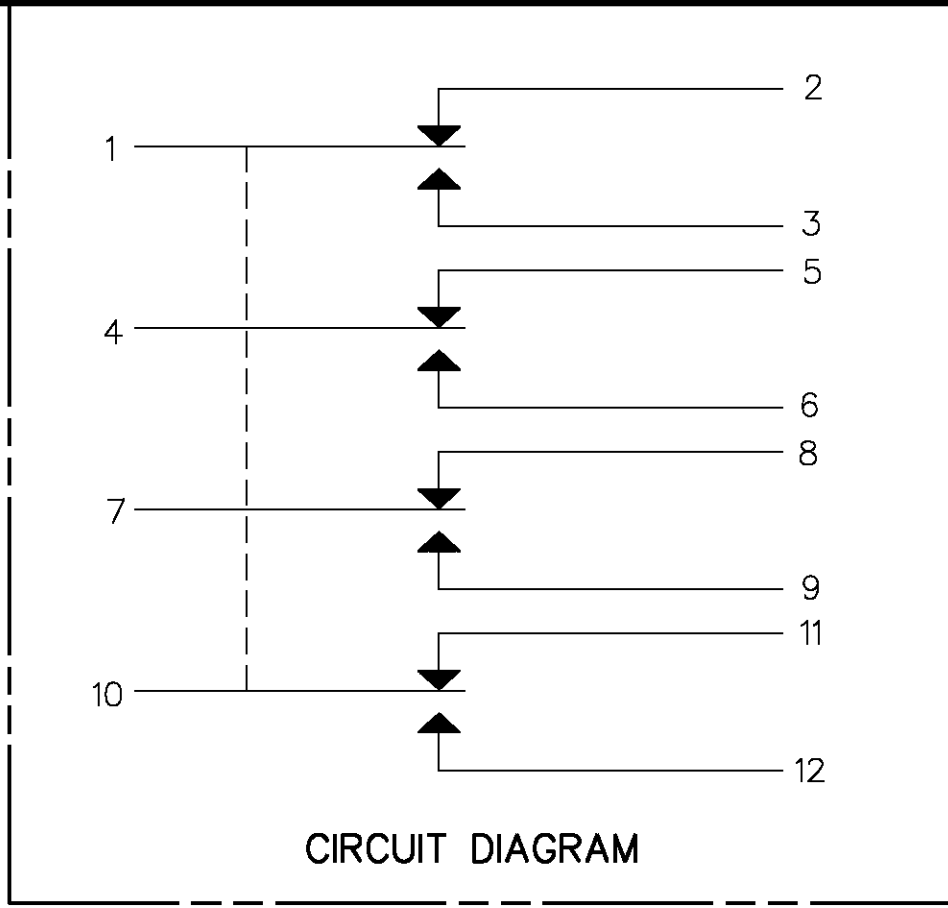


SPECIFICATION DETAILS:													
STANDARD:	CONFORMS TO MS27240-3 (MIL-S-8805/43), EXCEPT AS NOTED												
CONSTRUCTION:													
ENCLOSURE DESIGN	RESILIENT SEAL PER MIL-S-8805, SYMBOL 4												
CONTACT MATERIAL & CONFIGURATION	SMOOTH SILVER CONTACTS												
CIRCUIT CONFIGURATION	4 SPDT												
TERMINATION	LEADWIRES PER MIL-W-22759/7												
WEIGHT	.85 LB												
EXPOSED METALS	CORROSION RESISTANT STAINLESS STEEL												
O-RING MATERIAL	SILICONE												
ELECTRICAL CHARACTERISTICS:													
ELECTRICAL RATINGS	<table border="1"> <thead> <tr> <th>VOLTAGE</th> <th>RESISTIVE</th> <th>LOAD INDUCTIVE</th> <th>MOTOR</th> </tr> </thead> <tbody> <tr> <td>28 VDC</td> <td>7A</td> <td>4A</td> <td>4A</td> </tr> <tr> <td>28 VDC</td> <td>7A</td> <td>2.5</td> <td></td> </tr> </tbody> </table>	VOLTAGE	RESISTIVE	LOAD INDUCTIVE	MOTOR	28 VDC	7A	4A	4A	28 VDC	7A	2.5	
VOLTAGE	RESISTIVE	LOAD INDUCTIVE	MOTOR										
28 VDC	7A	4A	4A										
28 VDC	7A	2.5											
DIELECTRIC STRENGTH & INSULATION RESISTANCE	<table border="1"> <thead> <tr> <th>DIELECTRIC STRENGTH</th> <th>INSULATION RESISTANCE</th> </tr> </thead> <tbody> <tr> <td>≈ 60 Hz. FOR 5 SECONDS)</td> <td>(500 VDC ± 10%)</td> </tr> <tr> <td>-BETWEEN TERMINALS AND EXPOSED NON-CURRENT CARRYING METAL</td> <td>1000 V Rms, 500u A (MAX. LEAKAGE) 1000 Megohms MIN</td> </tr> <tr> <td>-BETWEEN TERMINALS OF MUTUALLY INSULATED CIRCUITS</td> <td>1000 V Rms, 500u A (MAX. LEAKAGE) 1000 Megohms MIN</td> </tr> <tr> <td>-BETWEEN ALL UNCONNECTED TERMINALS OF THE SAME POLE</td> <td>1000 V Rms, 500u A (MAX. LEAKAGE) 1000 Megohms MIN</td> </tr> </tbody> </table>	DIELECTRIC STRENGTH	INSULATION RESISTANCE	≈ 60 Hz. FOR 5 SECONDS)	(500 VDC ± 10%)	-BETWEEN TERMINALS AND EXPOSED NON-CURRENT CARRYING METAL	1000 V Rms, 500u A (MAX. LEAKAGE) 1000 Megohms MIN	-BETWEEN TERMINALS OF MUTUALLY INSULATED CIRCUITS	1000 V Rms, 500u A (MAX. LEAKAGE) 1000 Megohms MIN	-BETWEEN ALL UNCONNECTED TERMINALS OF THE SAME POLE	1000 V Rms, 500u A (MAX. LEAKAGE) 1000 Megohms MIN		
DIELECTRIC STRENGTH	INSULATION RESISTANCE												
≈ 60 Hz. FOR 5 SECONDS)	(500 VDC ± 10%)												
-BETWEEN TERMINALS AND EXPOSED NON-CURRENT CARRYING METAL	1000 V Rms, 500u A (MAX. LEAKAGE) 1000 Megohms MIN												
-BETWEEN TERMINALS OF MUTUALLY INSULATED CIRCUITS	1000 V Rms, 500u A (MAX. LEAKAGE) 1000 Megohms MIN												
-BETWEEN ALL UNCONNECTED TERMINALS OF THE SAME POLE	1000 V Rms, 500u A (MAX. LEAKAGE) 1000 Megohms MIN												
SWITCH RESISTANCE	△5												
RECOMMENDATION OR USE IN APPLICATIONS LESS THAN .5 amps AND/OR 12 volts	NO △3												
MECHANICAL CHARACTERISTICS:													
CHARACTERISTICS:													
COINCIDENCE OF OPERATING AND RELEASING POINTS	.010 OF PLUNGER TRAVEL												
OPERATING FORCE	6-12 LBS												
FULL OVERTRAVEL FORCE	30 LBS MAX												
RELEASE FORCE	4 LBS MIN												
PRETRAVEL	.040 MAX												
DIFFERENTIAL TRAVEL	.020 MAX												
OVERTRAVEL	.125 MIN												
MOUNTING STRENGTH	15 IN-LBS												
ACTUATOR STRENGTH	30 LBS APPLIED IN A DIRECTION TO CAUSE SWITCH ACTUATION												
LIFE:													
MECHANICAL LIFE	25,000 MIN. PER MIL-S-8805/43 △4												
ELECTRICAL LIFE AT FULL RATED LOAD	25,000 MIN. PER MIL-S-8805/43 △4												
ENVIRONMENTAL:													
TEMPERATURE RANGE	-55°C TO +85°C												
ALTITUDE RANGE	SEA LEVEL TO 50,000 FEET												
SHOCK	PER MIL-S-8805 SYMBOL M - 100 g												
VIBRATION	PER MIL-S-8805 SYMBOL 2 - 10-2000 Hz. & 15 g peak												
MOISTURE RESISTANCE	PER MIL-S-8805 (10 DAY TEST)												
THERMAL SHOCK	PER MIL-S-8805 (5 CYCLE TEST)												
SALT SPRAY	PER MIL-S-8805 (96 HR TEST)												



- NOTES
- 1 - CIRCUIT DIAGRAM, CATALOG LISTING, DATE CODE AND FED. MFG. CODE SHOWN ON NAMEPLATE
 - 2 - HARDWARE MAY BE PACKAGED UNASSEMBLED PER MIL-S-8805
 - 3 - CONTACT HONEYWELL-MICRO SWITCH IF ADDITIONAL INFORMATION ON LOW ENERGY LOADS IS REQUIRED OR FOR HELP WITH SPECIFIC APPLICATIONS
 - 4 - LIFE RATINGS ARE PER MIL-S-8805 REQUIREMENTS. ACTUAL LIFE EXCEEDS RATED LIFE. CONTACT HONEYWELL-MICRO SWITCH FOR ADDITIONAL DATA
 - 5 - SWITCH RESISTANCE EQUALS SWITCH CONTACT RESISTANCE PLUS WIRE LEAD LENGTH (OHMS/FT.). THE SWITCH CONTACT RESISTANCE SHALL NOT EXCEED 1% OF THE LOAD IMPEDANCE USING THE ELECTRICAL PARAMETERS OF THE ELECTRICAL ENDURANCE TEST LOAD. WIRE LEAD RESISTANCE EQUALS 9.19 OHMS/M FT. MAX AT +20°C
 - 6 - REPLACEMENT MOUNTING HARDWARE PACKET - 19PA9

DRAWING NUMBER: 604EN8-1
 PAGE 1 OF 1
 ISSUE: 2
 REVISIONS: A (09/23/05) BY: J.F. 17 OCT 98
 CHECK: J.K. 28 MAR 99
 DDM/CAD
 J.K. 28 MAR 99
 J.A.F. 1 APR 99
 CHECK: J.A.F. 1 APR 99

THIS DRAWING COVERS A PROPRIETARY ITEM AND IS THE PROPERTY OF MICRO SWITCH, A DIVISION OF HONEYWELL. THIS DRAWING IS NOT TO BE COPIED OR USED WITHOUT THE APPROVAL OF MICRO SWITCH.

FED. MFG. CODE 91829

MICRO SWITCH
a Honeywell Division

SWITCH - ENCLOSED

CATALOG LISTING
604EN8-1

THIRD ANGLE PROJECTION
SCALE 2:1
DO NOT SCALE PRINT
UNLESS OTHERWISE SPECIFIED TOLERANCES ARE:
ONE PLACE (.0) ±.030
TWO PLACES (.00) ±.015
THREE PLACES (.000) ±.005
ANGLES ±
WEIGHT

MASTER REDUCED
ANSI Y14.5M-1982 APPLIES