

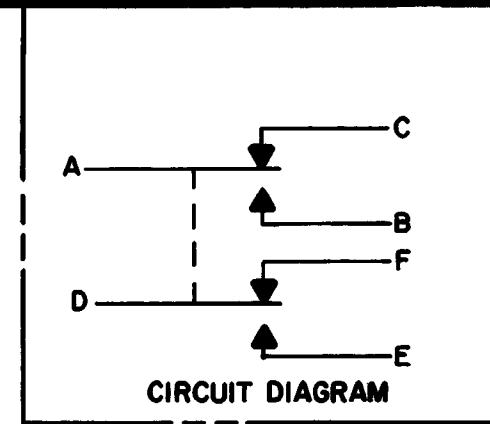
MICRO SWITCH

FREERPORT ILLINOIS, U.S.A.
A DIVISION OF HONEYWELL

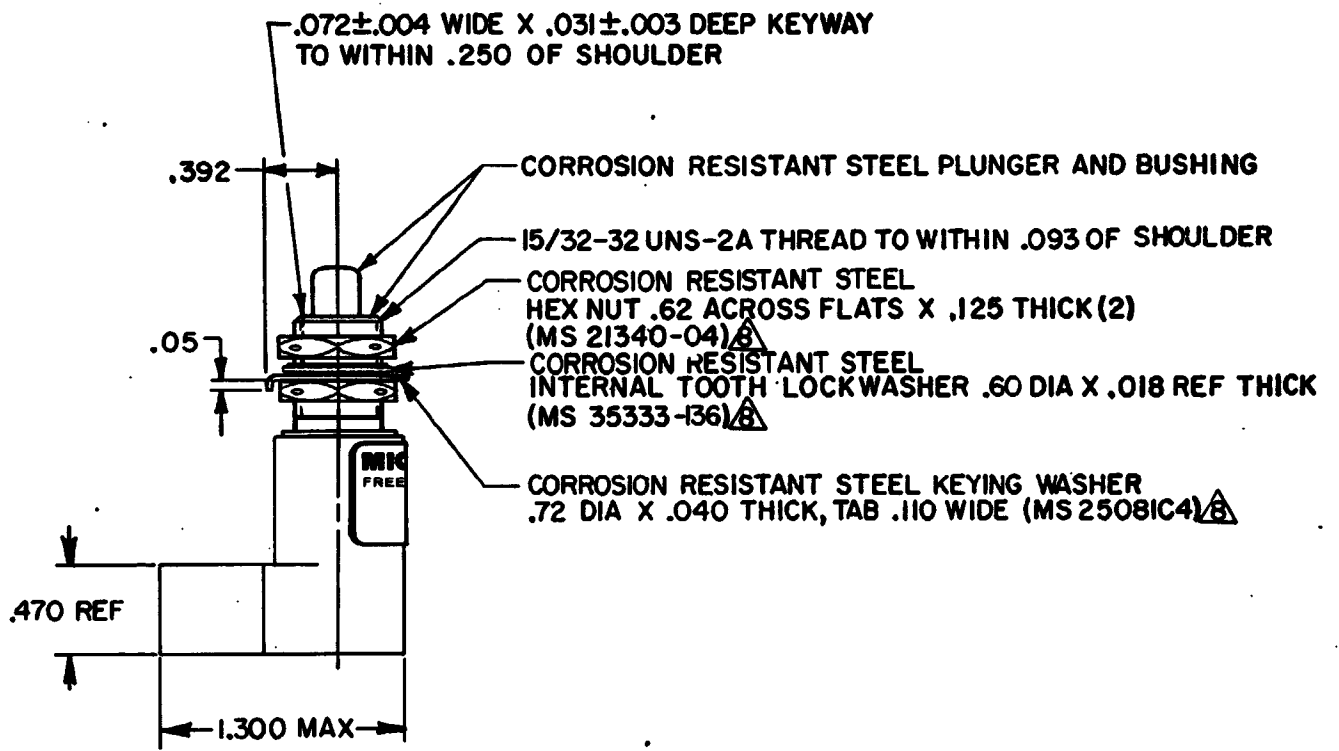
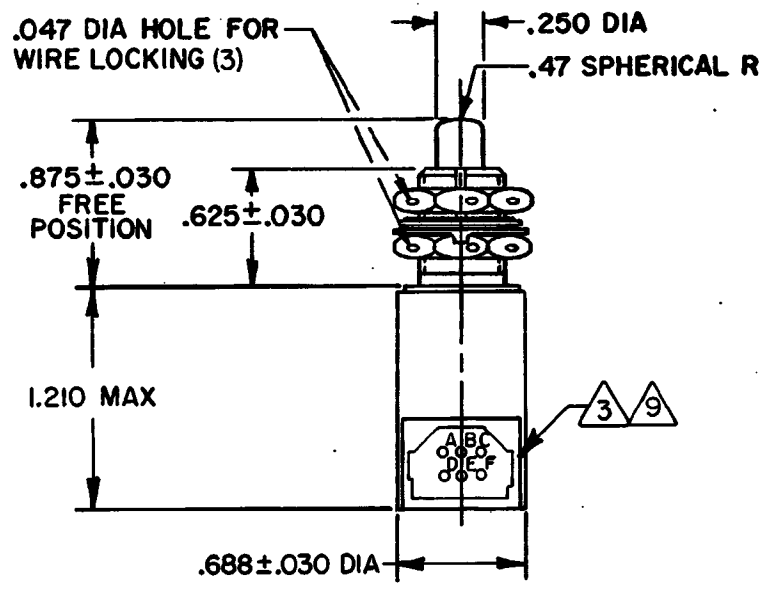
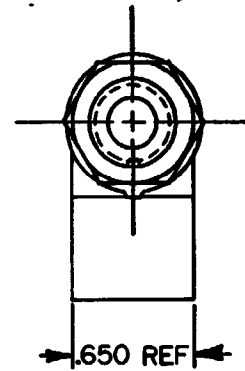
FED. MFG. CODE 91929

SWITCH-ENCLOSED

CATALOG LISTING
602EN109-R ★



602EN109-R
 DRAWING NUMBER
 ISSUE 14
 REVISIONS
 A CO46740
 D J W
 12 OCT 79
 B CO47573
 J A P
 7 AUG 80
 C CO49806
 J A P
 25 SEPT 81
 D CO52703
 D J W
 4 FEB 83
 E CO 57370
 MAM
 16 MAY 85
 F CO 66888
 D A W
 31 JAN 90
 G CO 73035
 D A W
 1 JUL 92
 H CO 75612-B
 WES
 18 AUG 93
 J CO06802
 MCC-AP
 30 AUG 04
 K CO040376
 MPH
 04 JUN 08
 FO-92851-A
 DRAWN
 D J W
 12 OCT 79
 CHECK
 RELEASE NO. PR-6444-T REPLACES



REVISIONS

A	CO46740	D J W	12 OCT 79
B	CO47573	J A P	7 AUG 80
C	CO49806	J A P	25 SEPT 81
D	CO52703	D J W	4 FEB 83
E	CO 57370	MAM	16 MAY 85
F	CO 66888	D A W	31 JAN 90
G	CO 73035	D A W	1 JUL 92
H	CO 75612-B	WES	18 AUG 93
J	CO06802	MCC-AP	30 AUG 04
K	CO040376	MPH	04 JUN 08

THIS DRAWING COVERS A PROPRIETARY ITEM AND IS THE PROPERTY OF MICRO SWITCH, A DIVISION OF HONEYWELL. THIS DRAWING IS NOT TO BE COPIED OR USED WITHOUT THE APPROVAL OF MICRO SWITCH.

THIRD ANGLE PROJECTION

SCALE FULL

DO NOT SCALE PRINT

TOLERANCES
 APPLY TO DESIGN UNITS. CONVERSIONS ARE ONLY FOR REFERENCE. UNLESS NOTED, TOLERANCES ARE ±

DESIGN UNITS	NO PLACES	ONE PLACE	TWO PLACES	THREE PLACES	HOLES
MM	0.10	0.05	0.02	0.01	0.10
IN	0.005	0.0025	0.001	0.0005	0.005

CHARACTERISTICS	ELECTRICAL DATA	
	CONTACT ARRANGEMENT	
OPERATING FORCE -----	6-12 LB	
FULL OVERTRAVEL FORCE -----	30 LB MAX	
RELEASE FORCE -----	4 LB MIN	
PRETRAVEL -----	.040 MAX	
DIFFERENTIAL TRAVEL -----	.020 MAX	
OVERTRAVEL -----	.210 MIN	
	28 VDC	
	SEA LEVEL	50,000 FT.
LOAD	7	7
RES	4	2.5
IND	4	
MOTOR	4	
LAMP		

RAW MATERIAL-COMMERCIAL STANDARD
 MICRO SWITCH STANDARDS APPLY
 DIMENSIONS ARE TO BE MET BEFORE PROTECTIVE COATINGS ARE APPLIED

WEIGHT .10 LBS MAX

- NOTES
- 1 - CORROSION RESISTANT STEEL ENCLOSURE
 - 2 - SWITCH SEALED PER MIL-PRF-8805 SYMBOL 4
 - 3 - DEUTSCH RECEPTACLE
 - 4 - COINCIDENCE OF OPERATING AND RELEASING POINTS: .010 OF PLUNGER TRAVEL
 - 5 - ELECTRICAL RATINGS APPLY AS SPECIFIED IN MIL-PRF-8805/43
 - 6 - CIRCUIT DIAGRAM AND CATALOG LISTING ARE SHOWN ON NAMEPLATE
 - 7 - CIRCUIT DIAGRAM - LETTERS ARE ASSOCIATED WITH RECEPTACLE
 - 8 - HARDWARE MAY BE PACKAGED UNASSEMBLED PER MIL-PRF-8805
 - 9 - CONNECTOR MUST BE PARALLEL WITH CENTERLINE OF BUSHING KEYWAY WITHIN ±6°