

**MICRO SWITCH**  
 FREEPORT ILLINOIS, U.S.A.  
 A DIVISION OF HONEYWELL  
 FED. MFG. CODE 91929

SWITCH - ENCLOSED

CATALOG LISTING  
**602EN104-6**

602EN104-6

M

DRAWING NUMBER

ISSUE

86

CHECK

REVISIONS

A C044351  
 CJH  
 7 MAR 80  
 B C047573  
 J A P  
 7 AUG 80  
 C C049806  
 J A P  
 25 SEPT 81  
 D C057370  
 TSK  
 15 MAY 85

CHECK

CHECK

CHECK

CHECK

CHECK

CHECK

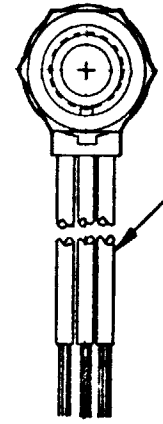
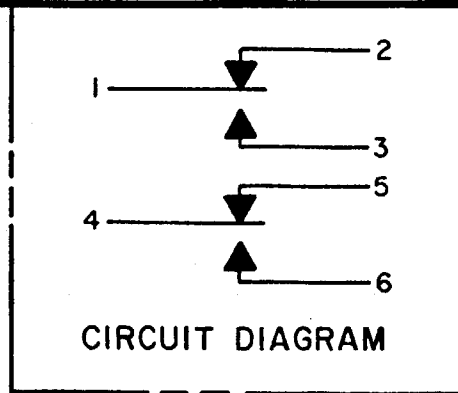
CHECK

DRAWN

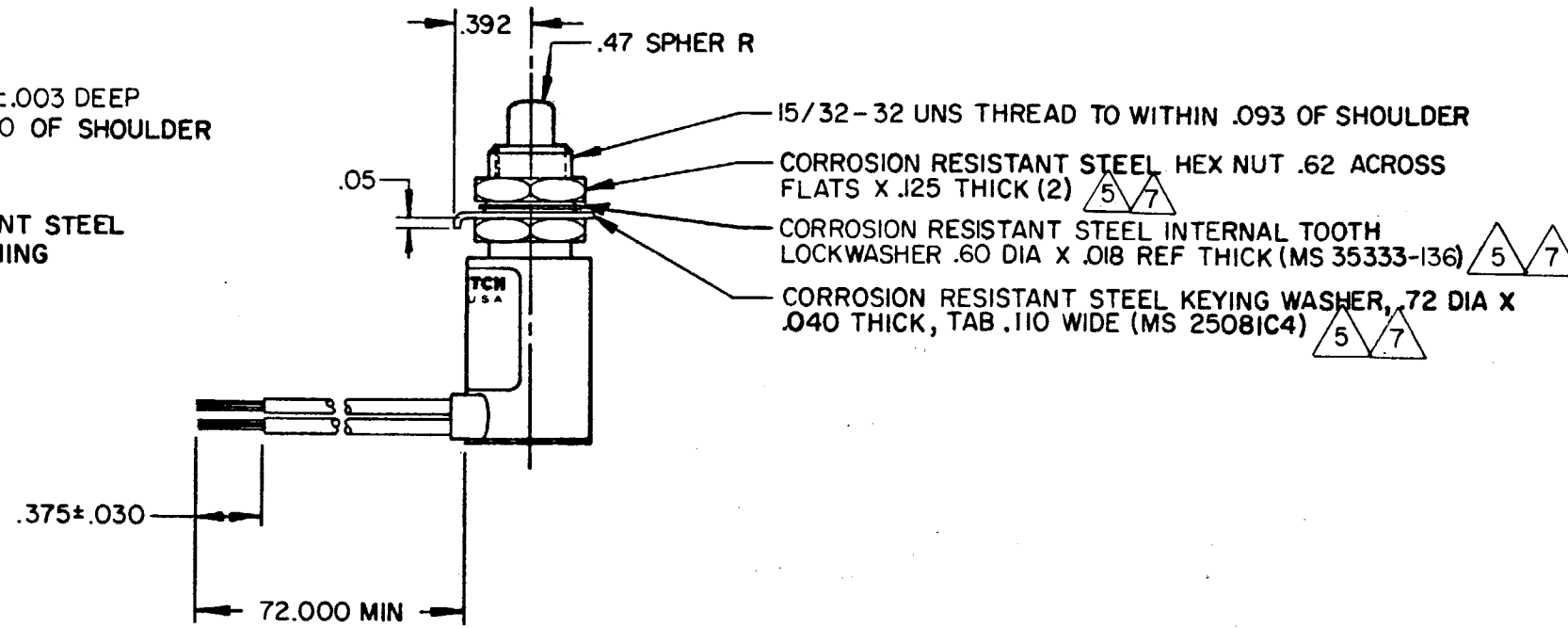
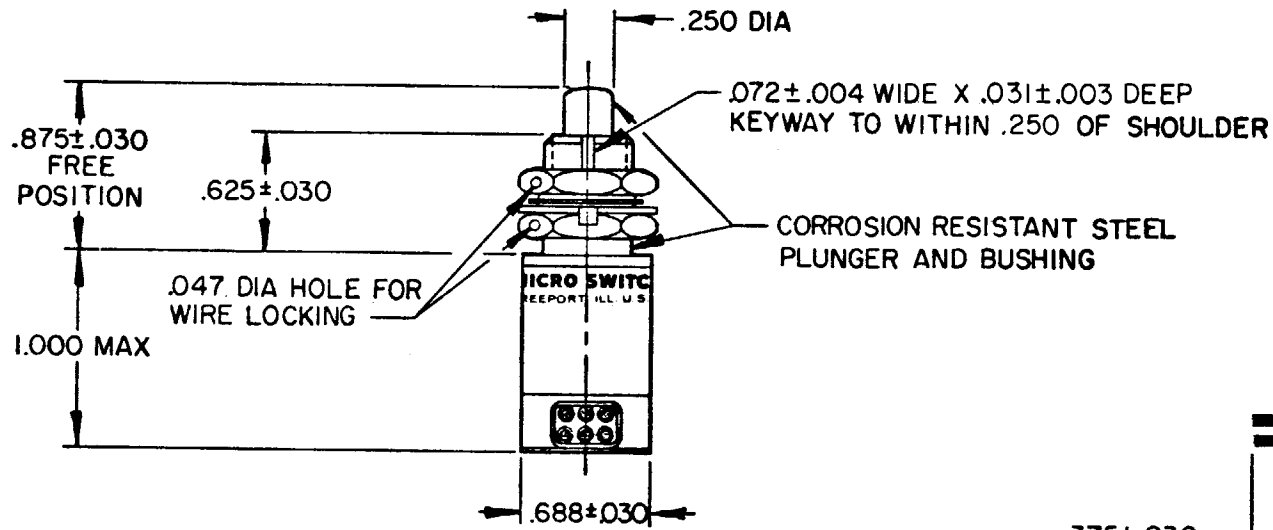
FO-52851-A

REPLACES X48122-EN

RELEASE NO. PR-4988



(6) NO. 20 WIRE LEAD PER MIL-W-22759/7  
 MARKED WITH CIRCUIT IDENTIFICATION AND WIRE  
 GAGE (1-20, 2-20, ETC) PER MIL-W-5088



- NOTES**
- 1 - CORROSION RESISTANT STEEL ENCLOSURE
  - 2 - CIRCUIT DIAGRAM, CAT. LIST., AND DATE CODE ARE SHOWN ON NAMEPLATE
  - 3 - SWITCH SEALED PER MIL-S-8805 SYMBOL 4
  - 4 - COINCIDENCE OF OPERATING AND RELEASING POINTS: .010 OF PLUNGER TRAVEL
  - 5 - REPLACEMENT MOUNTING HARDWARE - PACKET 19PA9
  - 6 - "O" RING MATERIAL IS FLUROSILICONE
  - 7 - HARDWARE MAY BE PACKAGED UNASSEMBLED PER MIL-S-8805

THIS DRAWING COVERS A PROPRIETARY ITEM AND IS THE PROPERTY OF MICRO SWITCH, A DIVISION OF HONEYWELL. THIS DRAWING IS NOT TO BE COPIED OR USED WITHOUT THE APPROVAL OF MICRO SWITCH.		THIRD ANGLE PROJECTION	SCALE FULL
CHARACTERISTICS		ELECTRICAL DATA	DO NOT SCALE PRINT
OPERATING FORCE	6-12 LB	CONTACT ARRANGEMENT	TOLERANCES
FULL OVERTRAVEL FORCE	30 LB MAX	S P D T (2)	APPLY TO DESIGN UNITS. CONVERSIONS ARE ONLY FOR REFERENCE. UNLESS NOTED, TOLERANCES ARE 2
RELEASE FORCE	4 LB MIN	LOAD	DIM. TOL. DIM. TOL.
PRETRAVEL	.040 MAX	28 VDC	mm mm/in in
DIFFERENTIAL TRAVEL	.020 MAX	SEA LEVEL 50,000 FT.	NO PLACES X 1/04
OVERTRAVEL	.125 MIN	RES 7 7	ONE PLACE X,X 0.4/018 X X 0.8/02
		IND 4 2.5	TWO PLACES X,XX 0.15/006 X XX 0.30/015
		MOTOR 4	THREE PLACES X,XXX 0.15/006 X XXX 0.15/006
			ANGLES
			SI METRIC US CUSTOMARY
			DESIGN UNITS
			RAW MATERIAL-COMMERCIAL STANDARD MICRO SWITCH STANDARDS APPLY
			DIMENSIONS ARE TO BE MET BEFORE PROTECTIVE COATINGS ARE APPLIED
			WEIGHT 6.2 OZ MAX