

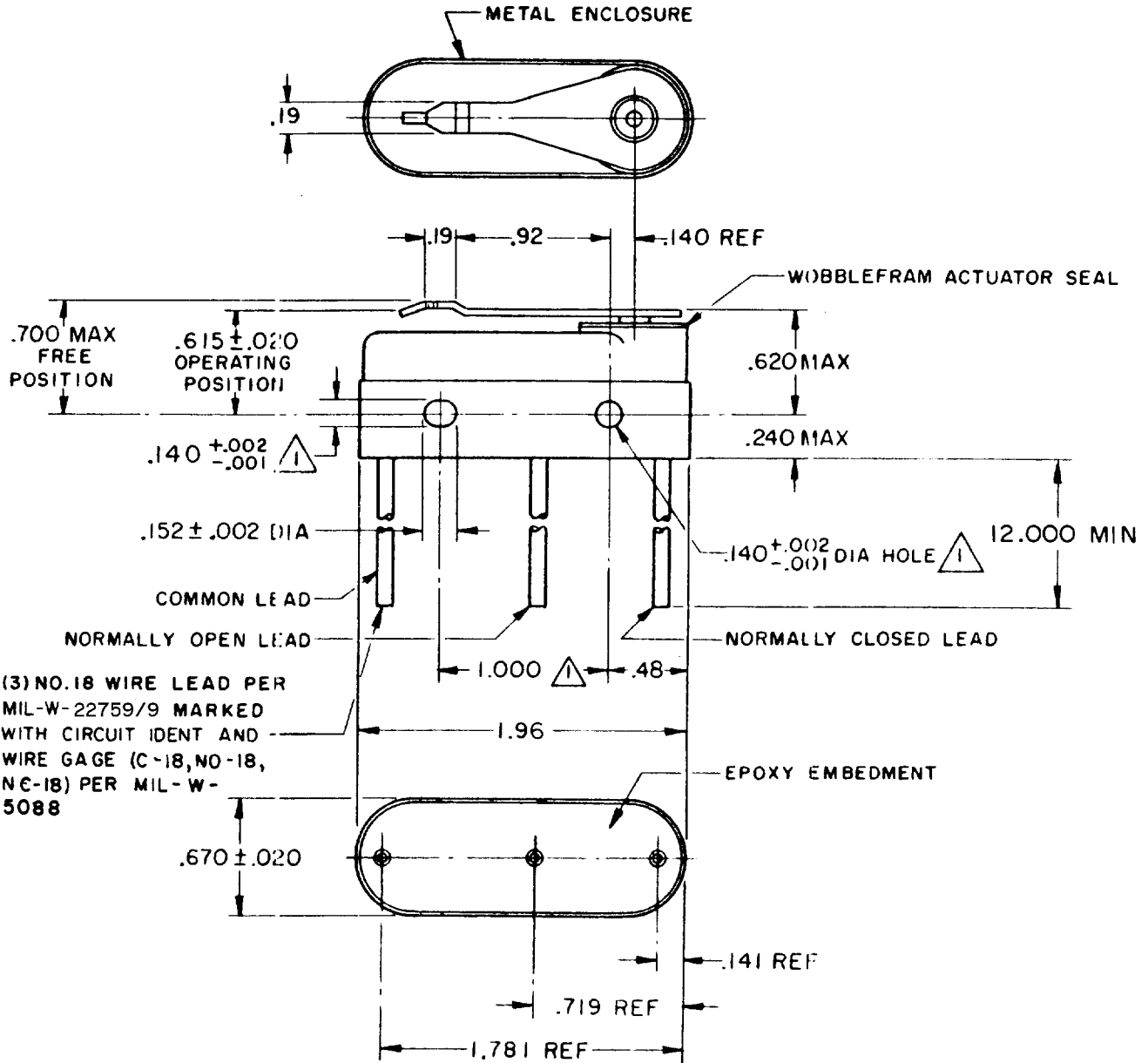
MICRO SWITCH

A DIVISION OF MINNEAPOLIS-HONEYWELL REGULATOR COMPANY
 MINNEAPOLIS, MINNESOTA

FED. MFR. CODE 91929

SWITCH - BASIC

(M) 4 HS 4 - 118
 ISSUE 7
 REPLACES
 DRAWING NUMBER
 4 HS 4 - 118
 PAGE 1 OF 1
 RELEASE NO.
 CHECK
 REVISIONS
 A CO15761
 OMW 28 APR 61
 B CO51690
 KEW 30 DEC 83
 C CO 55162
 MAM 10 DEC 85
 D CO61043
 TSK 29 AUG 88
 E CO 72580
 DAW 20 AUG 92
 F CO75625
 JDS 9 JULY 93
 G CO-94122
 TSM 12 MAR 99
 CHECK
 O M W 28 APR 61
 DRAWN
 FORMTEK
 FO-50378



(3) NO. 18 WIRE LEAD PER MIL-W-22759/9 MARKED WITH CIRCUIT IDENT AND WIRE GAGE (C-18, NO-18, NC-18) PER MIL-W-5088

- NOTE -**
- 1 - MOUNTING HOLES WILL ACCEPT PINS OR SCREWS OF .139 MAX DIA ON 1.000 ± .002 CENTERS
 - 2 - FOR USE IN AMBIENT TEMPERATURE RANGE FROM MINUS 65°F TO PLUS 250°F
 - 3 - WEIGHT OF SWITCH ONLY IS 1.5 OZ MAX WEIGHT OF CONDUCTOR GROUP ONLY IS 0.5 OZ MAX PER FOOT

THIS DRAWING COVERS A PROPRIETARY ITEM AND IS THE PROPERTY OF MICRO SWITCH, A DIVISION OF MINNEAPOLIS-HONEYWELL REGULATOR CO. THIS DRAWING IS NOT TO BE COPIED OR USED WITHOUT THE APPROVAL OF MICRO SWITCH.

CHARACTERISTICS	ELECTRICAL DATA			SCALE FULL
OPERATING FORCE ----- 10-22 OZ	CONTACT ARRANGEMENT S P D T			DO NOT SCALE PRINT
RELEASE FORCE ----- 4 OZ MIN	LINE VOLTAGE	INDUCTIVE LOAD	RESISTIVE LOAD	UNLESS OTHERWISE SPECIFIED DIMENSIONS ARE IN INCHES TOLERANCES ARE: ONE PLACE (.0) ± .030 TWO PLACE (.00) ± .018 THREE PLACE (.000) ± .008 ANGLES ± .005
PRETRAVEL ----- .065 MAX				
DIFFERENTIAL TRAVEL ----- .020 MAX	125 VAC	1 AMP	.5 AMP	
OVERTRAVEL ----- .010 MIN				WEIGHT 3