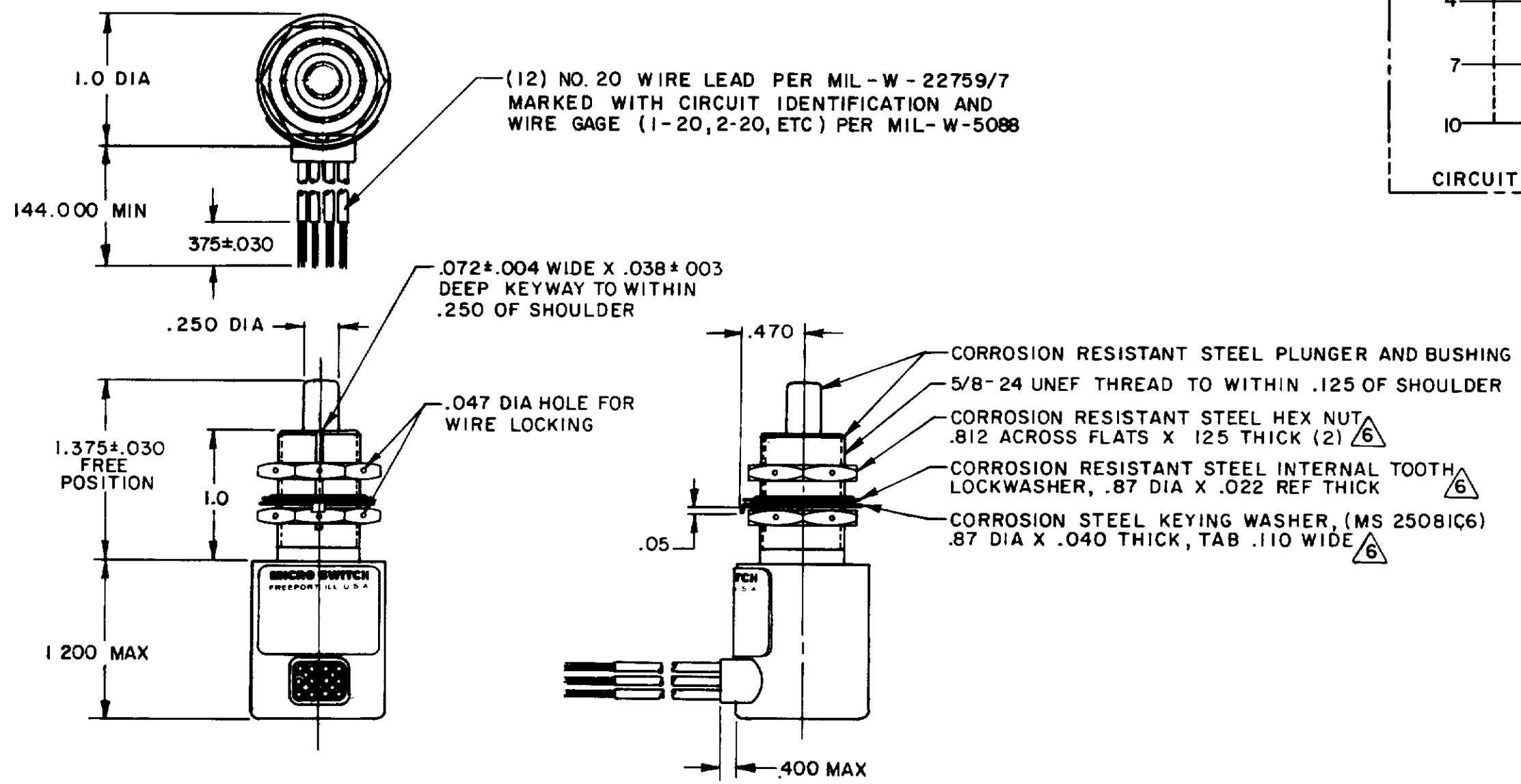
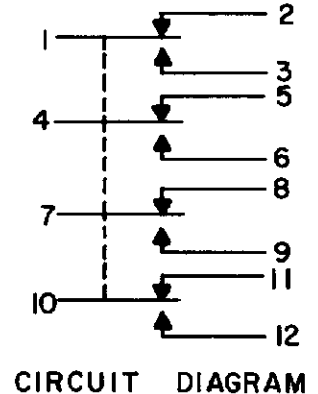


**MICRO SWITCH**  
 FREEPORT ILLINOIS U.S.A.  
 A DIVISION OF HONEYWELL  
 FED MFG CODE 91929

**SWITCH-ENCLOSED**

CATALOG LISTING  
**404EN1-12**



404EN1-12  
 M  
 DRAWING NUMBER  
 8  
 ISSUE  
 5  
 REVISIONS  
 A PR13801  
 G J W  
 26 MAR 85  
 B C073927  
 J A K  
 2 DEC 92  
 C C074101  
 G J W  
 30 JAN 93  
 D 77504  
 S A D  
 16 MAY 94  
 FO-52861-B  
 DRAWN  
 G J W  
 27 MAR 85  
 CHECK  
 C E C  
 27 MAR 85  
 CHECK  
 C E C  
 27 MAR 85  
 REPLACES  
 PR-13801  
 CHECK  
 C E C  
 27 MAR 85

- NOTES**
- 1 - CORROSION RESISTANT STEEL ENCLOSURE
  - 2 - SWITCH SEALED PER MIL-S-8805 SYMBOL 4
  - 3 - CIRCUIT DIAGRAM AND CATALOG LISTING ARE SHOWN ON NAMEPLATE
  - 4 - COINCIDENCE OF OPERATING AND RELEASING POINTS: .010 OF PLUNGER TRAVEL
  - 5 APPLICATION INFORMATION ONLY
  - 6 HARDWARE MAY BE PACKAGED UNASSEMBLED PER MIL-S-8805

|  |  |                        |  |
|--|--|------------------------|--|
| THIS DRAWING COVERS A PROPRIETARY ITEM AND IS THE PROPERTY OF MICRO SWITCH A DIVISION OF HONEYWELL THIS DRAWING IS NOT TO BE COPIED OR USED WITHOUT THE APPROVAL OF MICRO SWITCH |  | SCALE FULL             |  |
| DO NOT SCALE PRINT   |  | TOLERANCES             |  |
| APPLY TO DESIGN UNITS CONVERSIONS ARE ONLY FOR REFERENCE UNLESS NOTED TOLERANCES ARE "   |  | DIM TOL DIM TOL        |  |
| mm mm/in   |  | in mm/in               |  |
| NO PLACES 1 17.04  |  | 1 17.04                |  |
| ONE PLACE X X 0.4/0.16   |  | X X 0.4/0.16           |  |
| TWO PLACES X XX 0.15/0.06  |  | X XX 0.15/0.06         |  |
| THREE PLACES X XXX 0.13/0.05   |  | X XXX 0.13/0.05        |  |
| ANGLES   |  | ANGLES                 |  |
| DESIGN UNITS   |  | DESIGN UNITS           |  |
| SI METRIC  |  | US CUSTOMARY           |  |
| THIRD ANGLE PROJECT ON   |  | THIRD ANGLE PROJECT ON |  |
| WEIGHT 80 LB MAX   |  | WEIGHT 80 LB MAX       |  |
| <b>CHARACTERISTICS</b>   |  | <b>ELECTRICAL DATA</b> |  |
| OPERATING FORCE -----6-12 LBS  |  | CONTACT ARRANGEMENT    |  |
| FULL OVERTRAVEL FORCE -----30 LBS MAX  |  | S P D T (4)            |  |
| RELEASE FORCE -----4 LBS MIN   |  | 28VDC                  |  |
| PRETRAVEL -----.040 MAX  |  | SEA LEVEL 50,000 FT    |  |
| DIFFERENTIAL TRAVEL -----0.20 MAX  |  | RES 7 7                |  |
| OVERTRAVEL -----250 MIN  |  | IND 4 2 5              |  |
|  |  | MOTOR 4 4 5            |  |