

**MICRO SWITCH**  
a Honeywell Division

FED. MFG. CODE 91929

**SWITCH - TOGGLE  
(MAGNETIC HOLD-IN)**

CATALOG LISTING  
**27ET1-T**

CATALOG LISTING  
**27ET1-T**

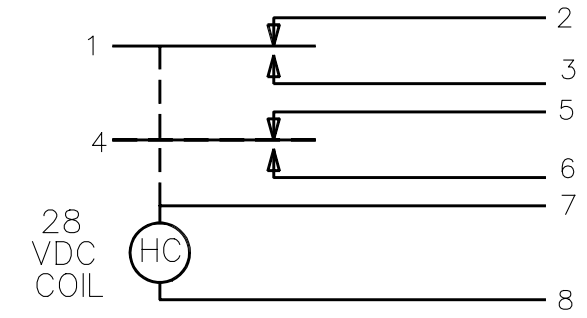
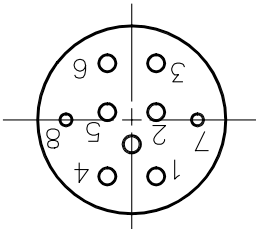
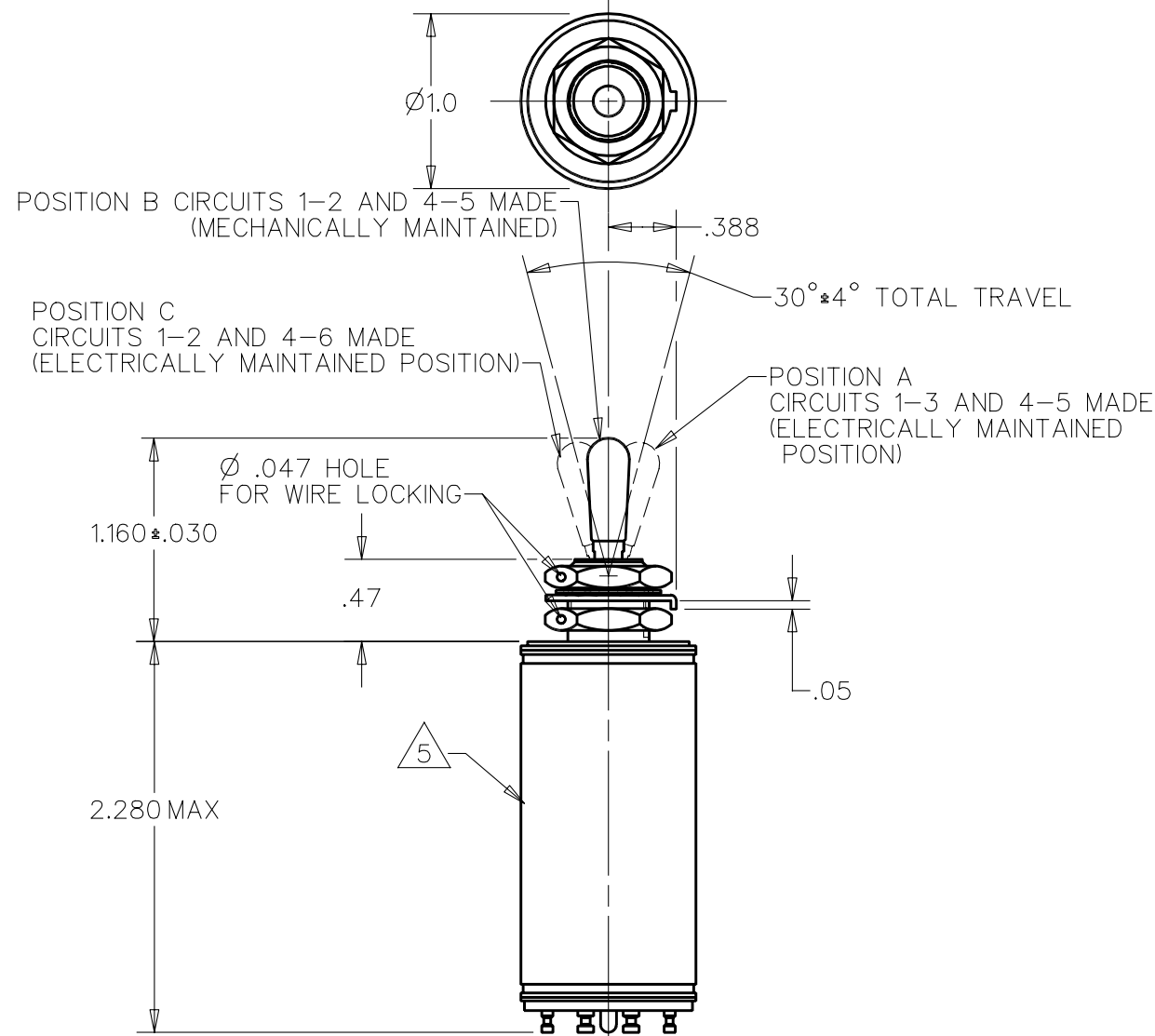
ISSUE  
**M**

PAGE 1 OF 1

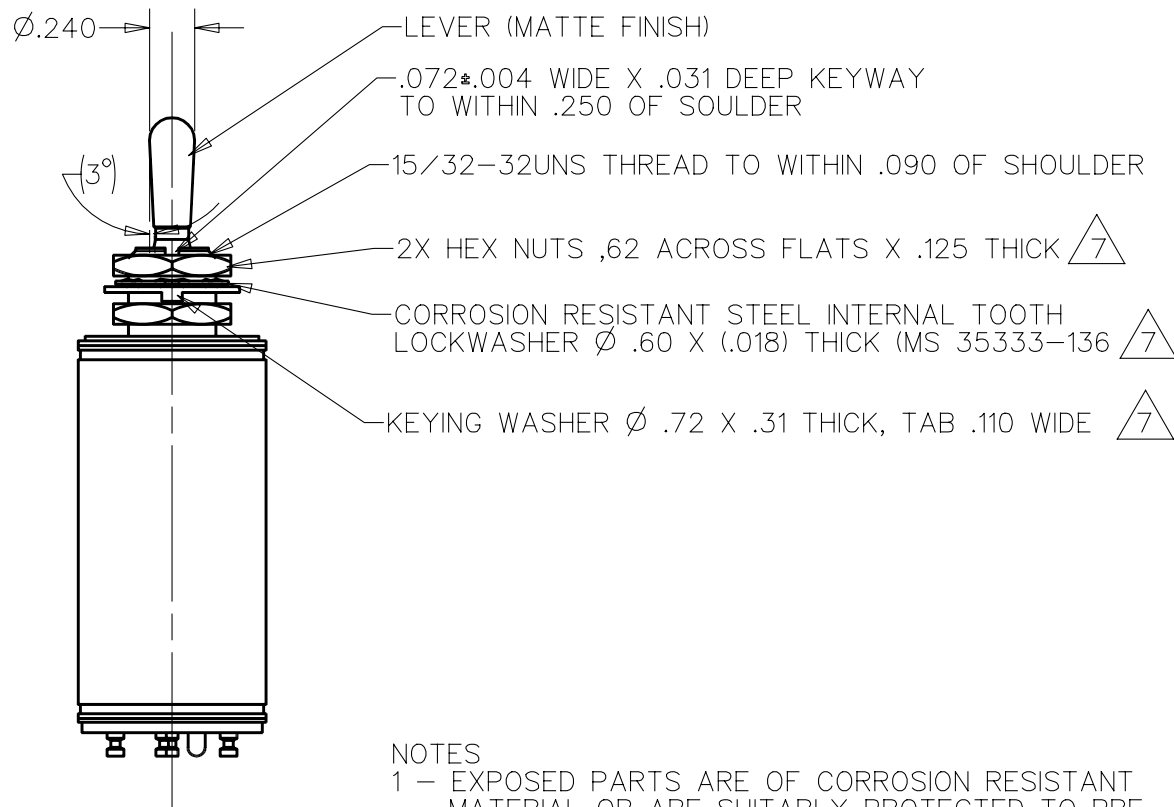
RELEASE NO. PR-2240-T REPLACES

REVISIONS  
A C079565  
G J W  
6 AUG 96

DDM/CAD  
DRAWN  
G J W 6 AUG 96



CIRCUIT DIAGRAM  
(MECHANICALLY MAINTAINED POSITION B)



- NOTES
- 1 - EXPOSED PARTS ARE OF CORROSION RESISTANT MATERIAL OR ARE SUITABLY PROTECTED TO PREVENT CORROSION, ENCLOSURE FINISHED WITH BLUE EPOXY BASED ENAMEL COLOR NO. 25184 PER FEDERAL STANDARD 595
  - 2 - SWITCH SEALED PER MIL-S-5594
  - 3 - HOLD IN VOLTAGE: THE MINIMUM SPECIFIED VOLTAGE AT WHICH THE LEVER WILL REMAIN ACTUATED. HOLD IN MAY OCCUR AT A LOWER VALUE. DROP OUT VOLTAGE: THE VOLTAGE RANGE IN WHICH THE LEVER WILL BE RELEASED
  - 4 - CIRCUITS CAN BE TRANSFERRED MANUALLY. ENERGIZING THE COIL WILL NOT CAUSE TRANSFER OF CIRCUITS
  - 5 - CIRCUIT IDENTIFICATION IS SHOWN ON SWITCH
  - 6 - WEIGHT OF SWITCH ONLY 4.0 OZ MAX
  - 7 - HARDWARE MAY BE FURNISHED UNASSEMBLED PER MIL-S-5594

THIS DRAWING COVERS A PROPRIETARY ITEM AND IS THE PROPERTY OF MICRO SWITCH, A DIVISION OF HONEYWELL. THIS DRAWING IS NOT TO BE COPIED OR USED WITHOUT THE APPROVAL OF MICRO SWITCH		THIRD ANGLE PROJECTION	
CHARACTERISTICS		ELECTRICAL DATA	
SOLENOID RATING AT 20° C		CONTACT ARRANGEMENT SPDT (2)	
STEAD STATE LIMITS --- 20-29 VDC		RATINGS IN AMPHERES	
HOLD IN --- 15 VDC		SEA LEVEL 65,000 FT	
DROP OUT --- 0-15 VDC		28 VOLTS DC	
COIL RESISTANCE --- 220 OHM MIN		INRUSH RES IND MOTOR INRUSH RES IND MOTOR	
OPERATING FORCE --- 7 LBS MAX		7 2 5 1.5	
OVERRIDE FORCE AT 29 VDC --- 10 LBS MAX			
		SCALE FULL	
		DO NOT SCALE PRINT	
		UNLESS OTHERWISE SPECIFIED TOLERANCES ARE	
		ONE PLACE (.0) ±.030	
		TWO PLACE (.00) ±.015	
		THREE PLACE (.000) ±.005	
		ANGLES ±	
		WEIGHT	

ANSI Y14.5M-1982 APPLIES