

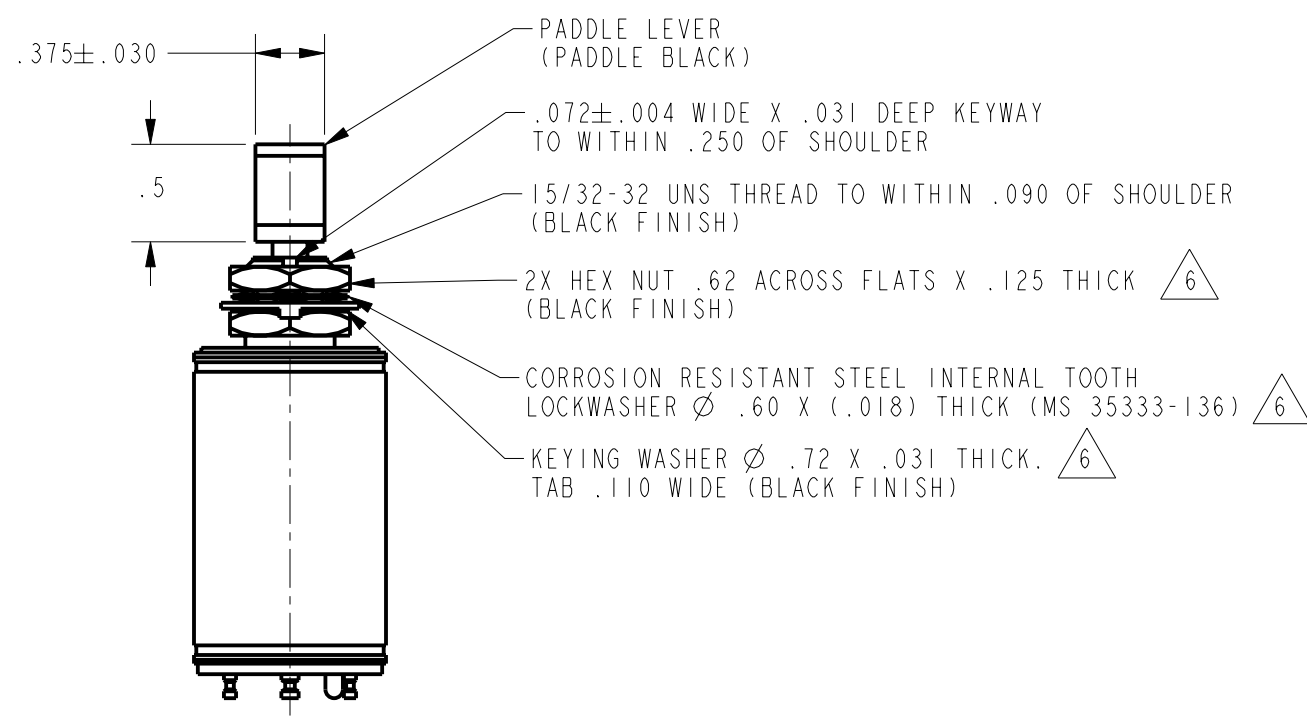
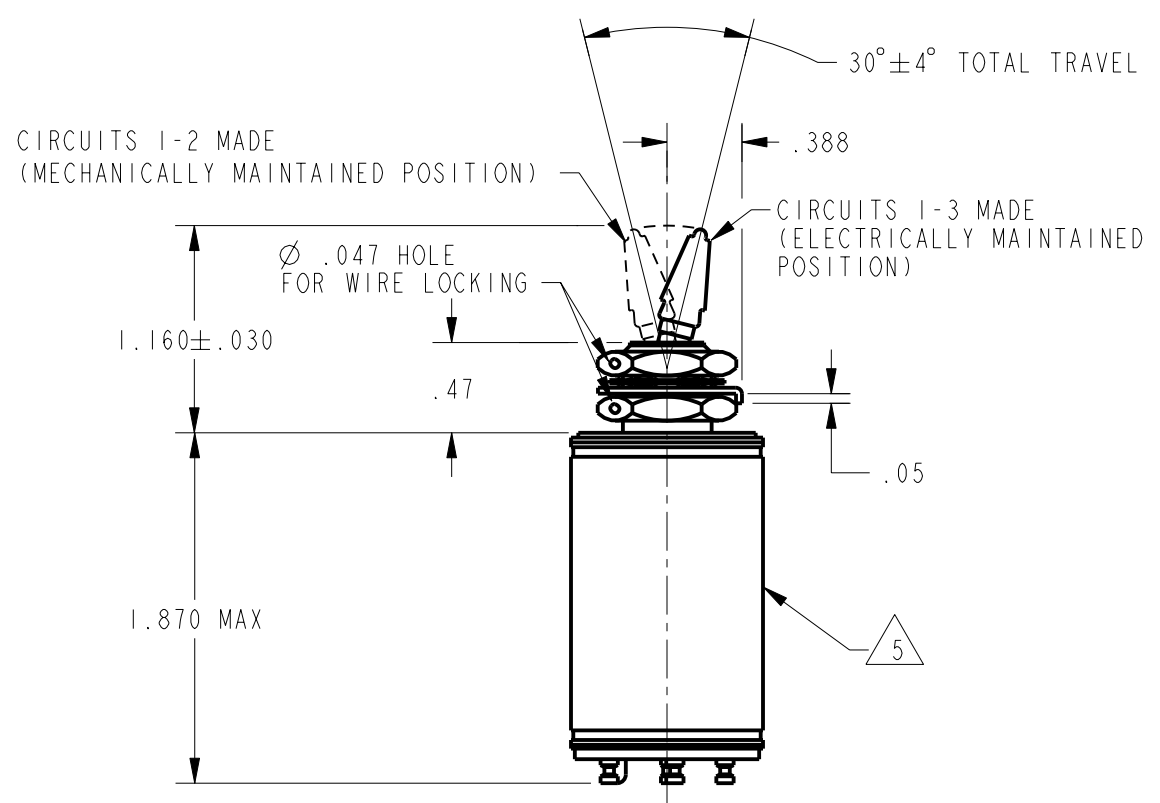
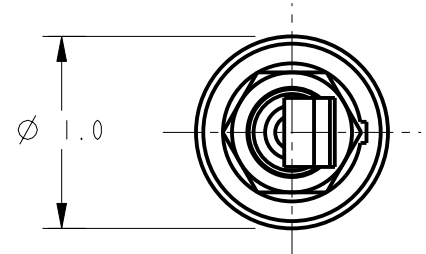
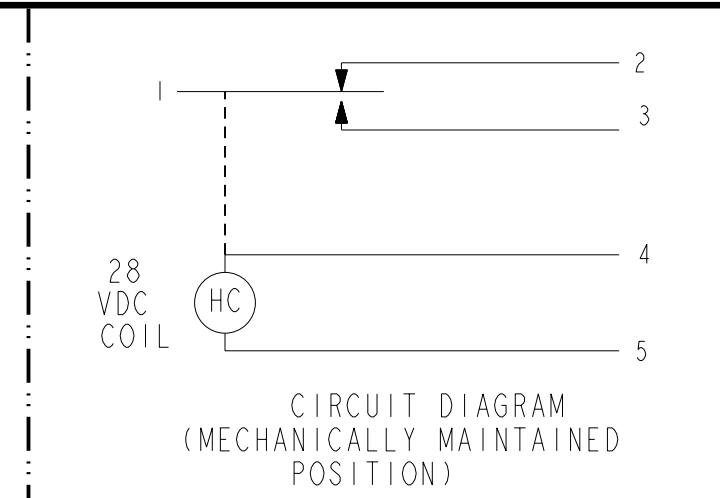
**MICROSWITCH**  
a Honeywell Division

FED. MFG. CODE 91929

**SWITCH - TOGGLE  
(MAGNETIC HOLD-IN)**

CATALOG LISTING

**25ET122-T**



CATALOG LISTING  
**25ET122-T**  
 PAGE 1 OF 1  
 RELEASE NO. PR-18335  
 REPLACES -  
 ISSUE 2  
 REVISIONS  
 A 205709  
 CSL  
 31 MAY 02  
 PTC/CAD 2D  
 DRAWN  
 C S L 31 MAY 02  
 CHECK  
 SAV 31 MAY 02  
 CHECK  
 MAY 02

- NOTES
- 1 - EXPOSED PARTS ARE OF CORROSION RESISTANT MATERIAL OR ARE SUITABLY PROTECTED TO PREVENT CORROSION, ENCLOSURE FINISHED WITH BLUE ENAMEL PER FEDERAL STANDARD 595
  - 2 - SWITCH SEALED PER MIL-S-5594
  - 3 - HOLD IN VOLTAGE: THE MINIMUM SPECIFIED VOLTAGE AT WHICH THE LEVER WILL REMAIN ACTUATED. HOLD IN MAY OCCUR AT A LOWER VALUE. DROP OUT VOLTAGE: THE VOLTAGE RANGE IN WHICH THE LEVER WILL BE RELEASED
  - 4 - CIRCUITS CAN BE TRANSFERRED MANUALLY. ENERGIZING THE COIL WILL NOT CAUSE TRANSFER OF CIRCUITS
  - 5 - CIRCUIT IDENTIFICATION IS SHOWN ON SWITCH HARDWARE MAY BE FURNISHED UNASSEMBLED PER MIL-S-5594
  - 6 -

THIS DRAWING COVERS A PROPRIETARY ITEM AND IS THE PROPERTY OF MICRO SWITCH, A DIVISION OF HONEYWELL. THIS DRAWING IS NOT TO BE COPIED OR USED WITHOUT THE APPROVAL OF MICRO SWITCH

CHARACTERISTICS	
SOLENOID RATING AT 20°C	
STEADY STATE LIMITS	20-29 VDC
HOLD IN	10 VDC
DROP OUT	0-10 VDC
COIL RESISTANCE	220 OHM MIN
OPERATING FORCE	7 LBS MAX
OVERRIDE FORCE AT 29 VDC	10 LBS MAX

ELECTRICAL DATA						
CONTACT ARRANGEMENT S P D T						
RATINGS IN AMPERES						
VOLTAGE	SEA LEVEL			65,000 FT		
	RES	IND	MOTOR	RES	IND	MOTOR
28 VOLTS DC	4	3	4	4	2.5	4

THIRD ANGLE PROJECTION	
SCALE	FULL
DO NOT SCALE PRINT	
UNLESS OTHERWISE SPECIFIED TOLERANCES ARE	
ONE PLACE	(.0) ±.030
TWO PLACE	(.00) ±.015
THREE PLACE	(.000) ±.005
ANGLES	±
WEIGHT	8.5 OZ MAX

ANSI Y14.5M-1982 APPLIES