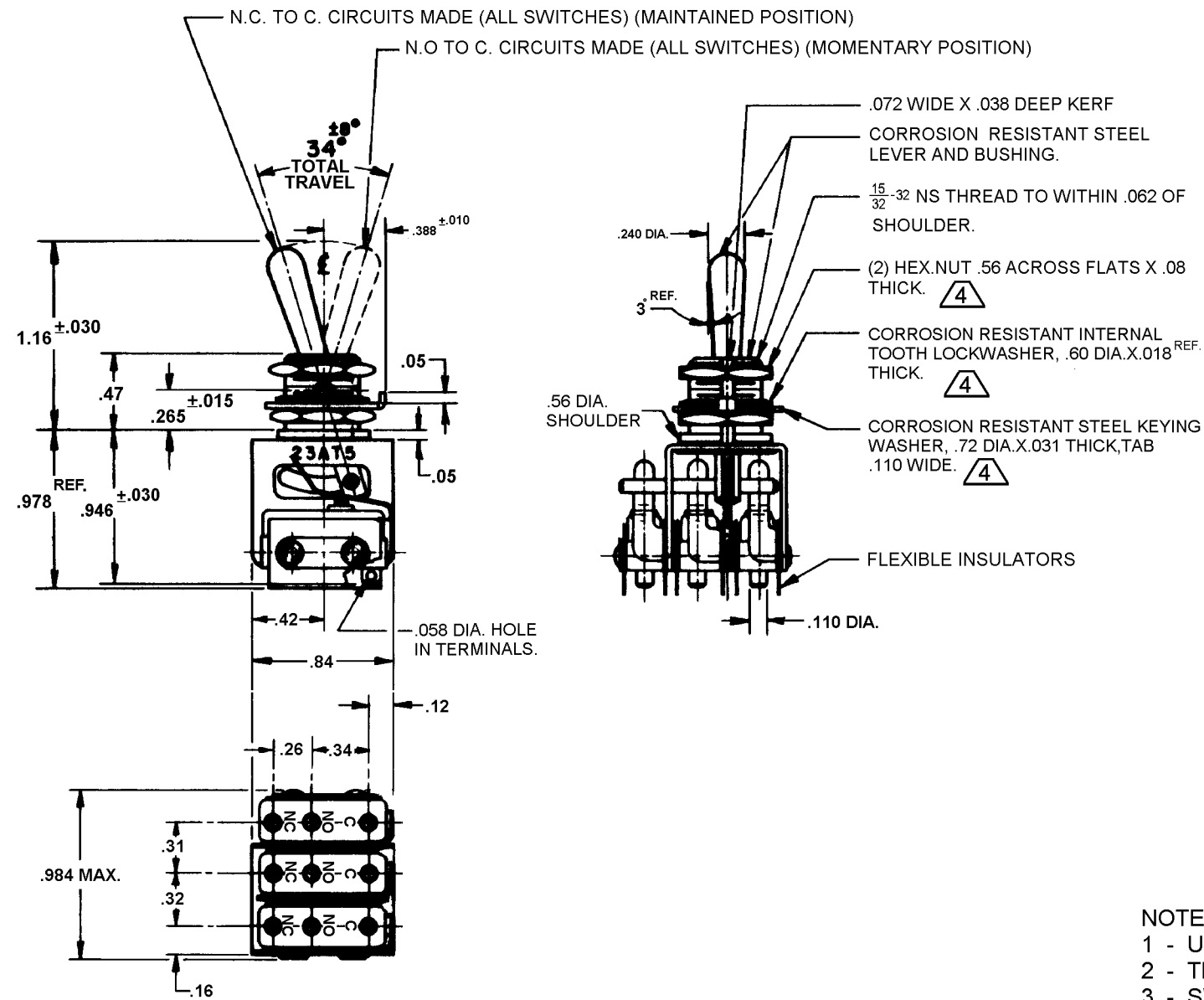


HONEYWELL  
PART NUMBER  
**23AT5**  
FAA-PMA

REV	DOCUMENT	CHANGED BY	CHECK
10	0010576	KSR 25JAN05	AK



- NOTES
- UNIT INCLUDES (3) CAT. LIST. 1SM1 BASIC SWITCHES
  - TERMINALS ARE PLATED FOR SOLDERING
  - SWITCHES DO NOT NECESSARILY OPERATE SIMULTANEOUSLY
  - HARDWARE FURNISHED ASSEMBLED WITH SWITCH OR IN PACKET PER MIL-PRF-8805
  - REPLACEMENT MOUNTING HARDWARE PACKET 15PA312-AT
  - FOR MANUFACTURING DETAIL SEE ASSEMBLY DRAWING 23AT5 FOR FAA-PMA

ELECTRICAL DATA	
CONTACT ARRANGEMENT (3) S.P.D.T	
250 VAC -----	5 AMP
30 VOLTS DC RATING	
INDUCTIVE ----- SEA LEVEL -----	3 AMP
50,000 FT. -----	2.5 AMP
RESISTIVE ----- SEA LEVEL -----	5 AMP
50,000 FT. -----	5 AMP
MAXIMUM INRUSH -----	24 AMP

DESIGN UNITS: INCH
TOLERANCES UNLESS NOTED:
NO PLACE X ± 0.040
ONE PLACE .X ± 0.030
TWO PLACE .XX ± 0.015
THREE PLACE .XXX ± 0.005
FOUR PLACE .XXXX ± 0.0005
ANGLES ± 2
THIRD ANGLE PROJECTION

DRAWN	DAW	06APR56
CHECK	GCH	27APR56
THIS DRAWING COVERS A PROPRIETARY ITEM AND IS THE PROPERTY OF HONEYWELL. THIS DRAWING IS NOT TO BE COPIED OR USED WITHOUT THE PERMISSION OF HONEYWELL.		
INTERPRET PER ASME Y14.5M-1994 OTHER HONEYWELL ENGINEERING STANDARDS MAY APPLY		
RASTER		

<b>Honeywell</b>			
TITLE <b>ASSEMBLY - TOGGLE SWITCH</b>			
SIZE	TYPE	DRAWING NAME	REV
<b>B</b>	<b>I</b>	<b>23AT5</b>	<b>10</b>
SCALE	1:1	SHEET	1 OF 1