

MICRO SWITCH

A DIVISION OF MINNEAPOLIS-HONEYWELL REGULATOR COMPANY
FREEPORT, ILLINOIS

FED. MFR. CODE 91929

ASSEMBLY- TOGGLE SWITCH

CATALOG LISTING

23AT4

(M) 23AT4
ISSUE 1

CATALOG LISTING

23AT4

PAGE 1 OF 1

M

DRAWING
NUMBER

8

ISSUE

REPLACES

RELEASE NO.

C.M.T. 27APR.56

CHECK

J.S. 25APR.56

CHECK

M.B.F. 2 APR 59

CHECK

W.J.M. 82

CHECK

M.A.M. 25 SEP 90

CHECK

G. 207630

C.S.L. 17 MAR 03

CHECK

D.A.W. 5, APR. 56

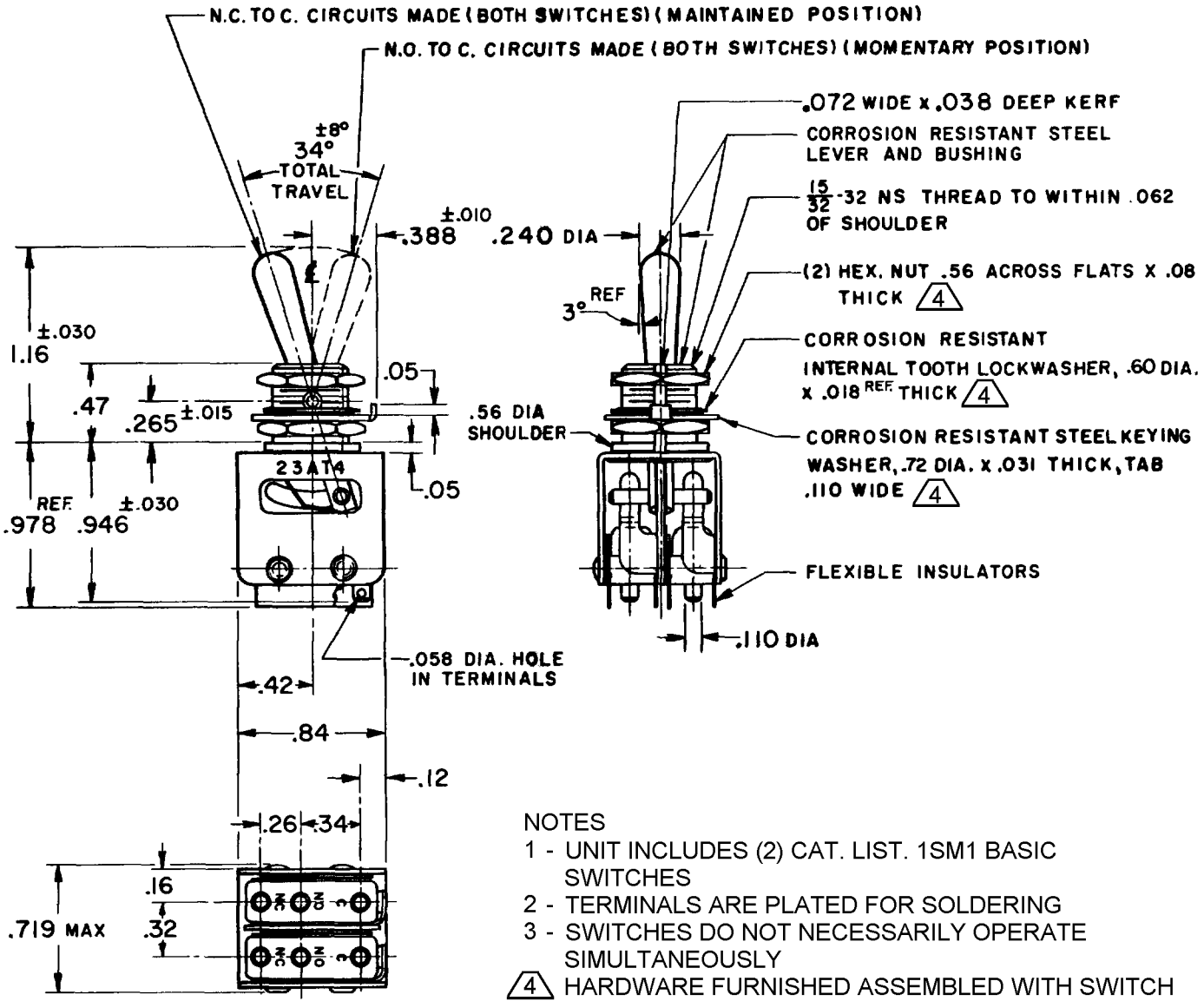
CHECK

G.C.H. 27APR.56

REVISIONS

A	C.O. 9600	D.A.W.	5 APR. 56
B	C.O. 10771	O.M.W.	25 SEPT. 56
C	CO13507	M.B.F.	2 APR 59
D	CO28982	W.J.M.	82
E	CO50566-B	M.A.M.	25 SEP 90
F	CO66089	G.	207630
G	207630	C.S.L.	17 MAR 03

74-88
DRAWN
RASTER



- NOTES
- 1 - UNIT INCLUDES (2) CAT. LIST. 1SM1 BASIC SWITCHES
 - 2 - TERMINALS ARE PLATED FOR SOLDERING
 - 3 - SWITCHES DO NOT NECESSARILY OPERATE SIMULTANEOUSLY
 - 4 - HARDWARE FURNISHED ASSEMBLED WITH SWITCH OR IN PACKET PER MIL-PRF-8805
 - 5 - REPLACEMENT MOUNTING HARDWARE PACKET 15PA312-AT

THIS DRAWING COVERS A PROPRIETARY ITEM AND IS THE PROPERTY OF MICRO SWITCH, A DIVISION OF HONEYWELL. THIS DRAWING IS NOT TO BE COPIED OR USED WITHOUT THE APPROVAL OF MICRO SWITCH.

CHARACTERISTICS	ELECTRICAL DATA	SCALE ----- FULL
	CONTACT ARRANGEMENT (2) S. P. D. T.	DO NOT SCALE PRINT
	250 VAC ----- 5 AMP 30 VOLTS DC RATING	UNLESS OTHERWISE SPECIFIED DIMENSIONS ARE IN INCHES TOLERANCES ARE:
	INDUCTIVE ----- SEA LEVEL ----- 3 AMP 50,000 FT. ----- 2.5 AMP	ONE PLACE (.0) +/- .030 TWO PLACE (.00) +/- .015 THREE PLACE (.000) +/- .008 ANGLES +/-
	RESISTIVE ----- SEA LEVEL ----- 5 AMP 50,000 FT. ----- 5 AMP	WEIGHT ----- .06 LB.
	MAXIMUM INRUSH ----- 24 AMP	