

M 23AT11-T2

M

DRAWING NUMBER

ISSUE

4

REPLACES

RELEASE NO. SR 9300

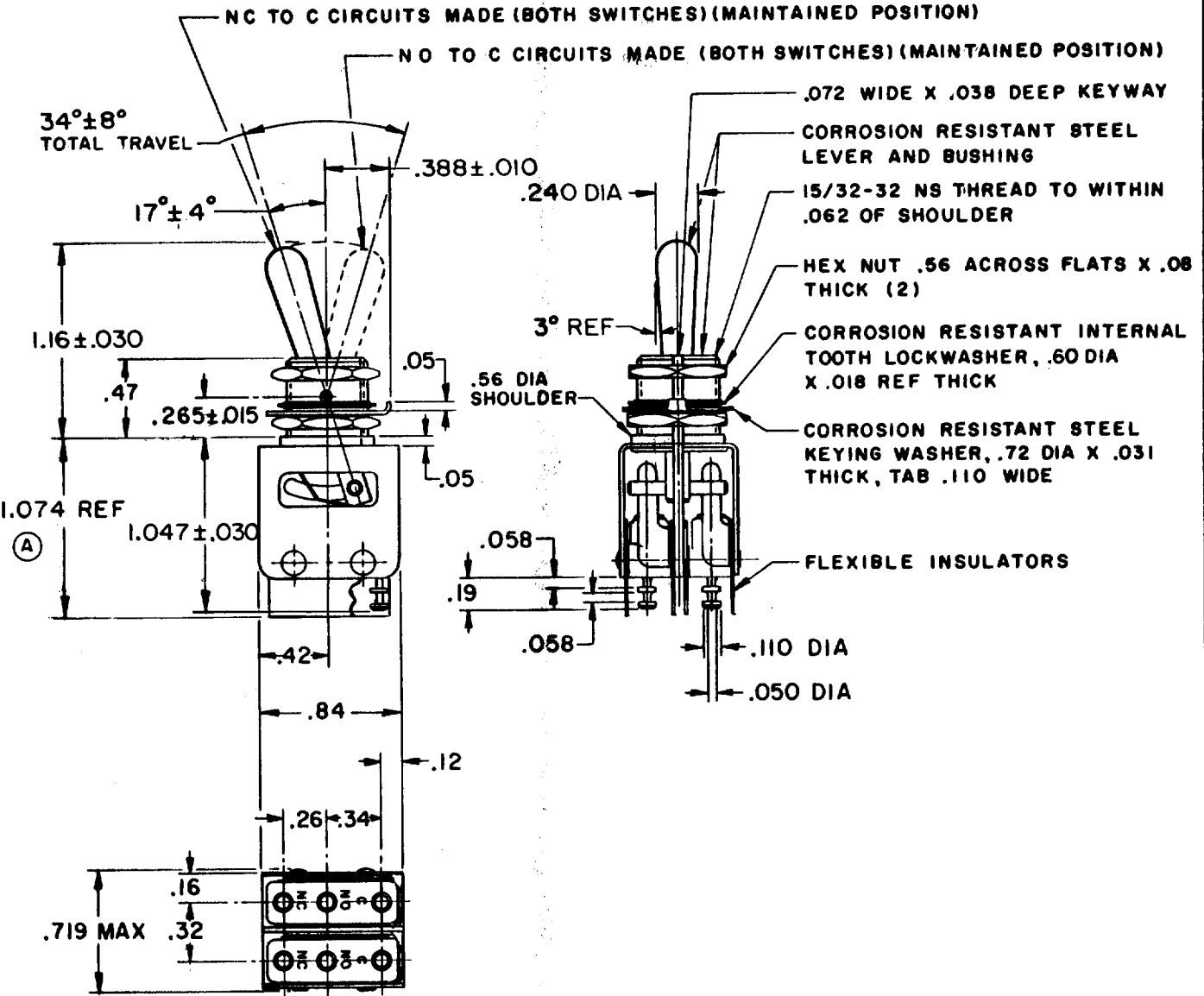
CHECK

CHECK

CHECK

CHECK

DRAWN



- NOTE -**
- 1- UNIT INCLUDES CAT. LIST. ISM23-T2 BASIC SWITCH
 - 2- TERMINALS ARE PLATED FOR SOLDERING
 - 3- SWITCHES DO NOT NECESSARILY OPERATE SIMULTANEOUSLY
 - 4- BASIC SWITCHES HAVE 24 K SOLID GOLD CONTACT MATERIAL

THIS DRAWING COVERS A PROPRIETARY ITEM AND IS THE PROPERTY OF MICRO SWITCH, A DIVISION OF MINNEAPOLIS-HONEYWELL REGULATOR CO. THIS DRAWING IS NOT TO BE COPIED OR USED WITHOUT THE APPROVAL OF MICRO SWITCH.

CHARACTERISTICS	ELECTRICAL DATA	SCALE FULL
	CONTACT ARRANGEMENT S P D T (2)	DO NOT SCALE PRINT
	30 VOLTS DC RATING	UNLESS OTHERWISE SPECIFIED DIMENSIONS ARE IN INCHES TOLERANCES ARE:
	INDUCTIVE ----- SEA LEVEL ----- 1/2 AMP 50,000 FT. ----- 1/2 AMP	ONE PLACE (.0) ±.030 TWO PLACE (.00) ±.015 THREE PLACE (.000) ±.005 ANGLES ±
	RESISTIVE ----- SEA LEVEL ----- 1 AMP 50,000 FT. ----- 1 AMP	
	MAXIMUM INRUSH ----- 2 AMP	WEIGHT .06 LB

GCH 21 OCT 60
 K L B 21 OCT 60
 FO-50378