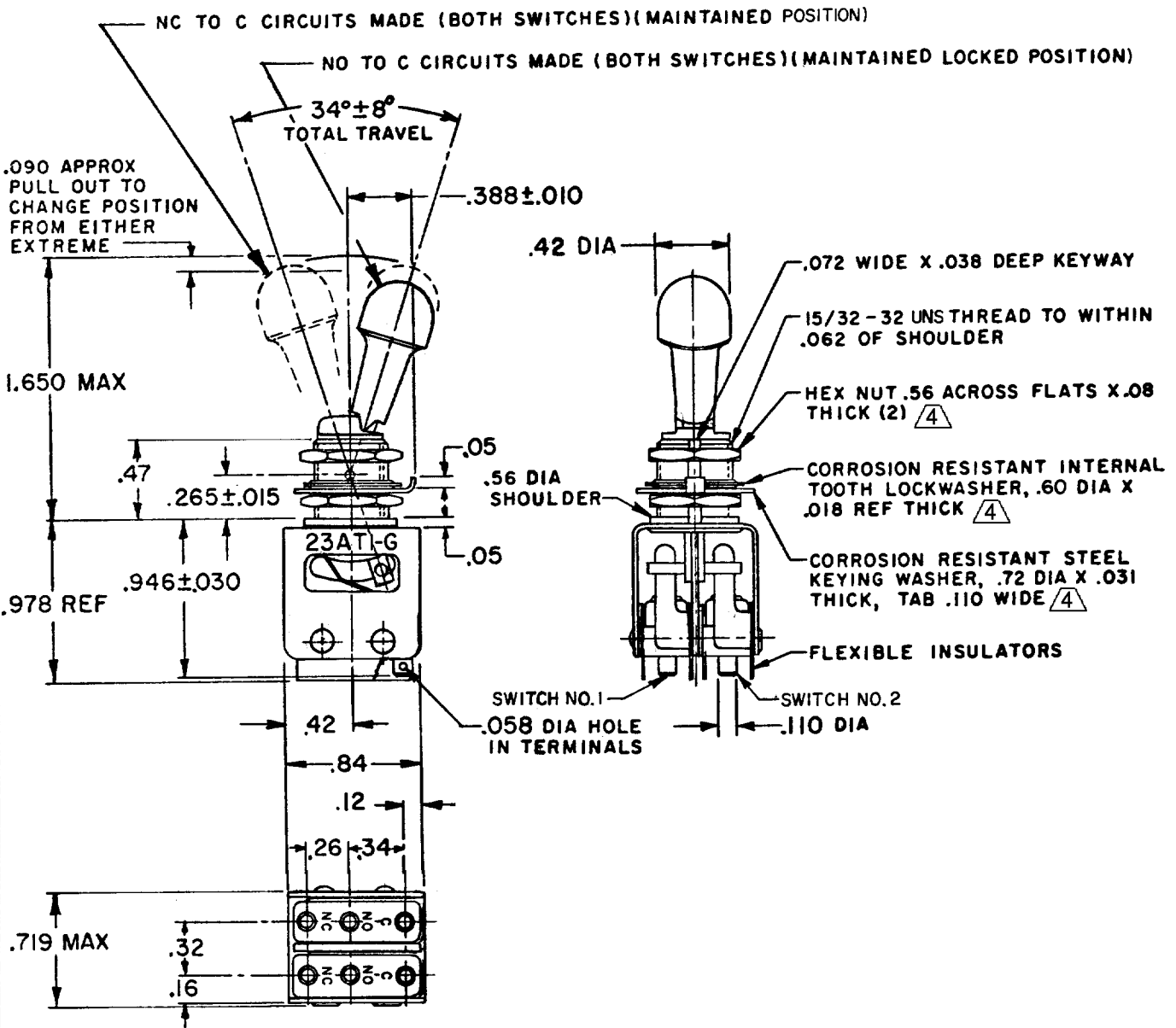


MICRO SWITCH

FREERPORT ILLINOIS, U.S.A
A DIVISION OF HONEYWELL
FED. MFG. CODE 91929

ASSEMBLY- TOGGLE SWITCH

ATALOG LISTING
23AT1-G

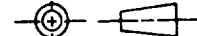


NOTES

- 1 - UNIT INCLUDES CATALOG LISTING 1SM1 BASIC SWITCH (2)
- 2 - SWITCHES DO NOT NECESSARILY OPERATE SIMULTANEOUSLY
- 3 - TERMINALS ARE PLATED FOR SOLDERING
- 4 HARDWARE FURNISHED ASSEMBLED WITH SWITCH OR IN PACKET PER MIL-PR-8805
- 5 - REPLACEMENT MOUNTING HARDWARE PACKET 15PA312-AT

THIS DRAWING COVERS A PROPRIETARY ITEM AND IS THE PROPERTY OF MICRO SWITCH, A DIVISION OF HONEYWELL. THIS DRAWING IS NOT TO BE COPIED OR USED WITHOUT THE APPROVAL OF MICRO SWITCH.

THIRD ANGLE PROJECTION



CHARACTERISTICS

ELECTRICAL DATA

SCALE FULL

CONTACT ARRANGEMENT
S P D T (2)

DO NOT SCALE PRINT

250 VAC ----- 5 AMP

TOLERANCES

APPLY TO DESIGN UNITS. CONVERSIONS ARE ONLY FOR REFERENCE. UNLESS NOTED, TOLERANCES ARE ±

30 VOLTS DC RATING

INDUCTIVE ----- SEA LEVEL --- 3 AMP
50,000 FT --- 2.5 AMP
RESISTIVE ----- SEA LEVEL --- 5 AMP
50,000 FT --- 5 AMP
MAXIMUM INRUSH ----- 24 AMP

DIM.	TOL.	DIM.	TOL.
mm	mm/in	in	mm/in
NO PLACES	X	1/64	
ONE PLACE	X,X	0.4/.016	X,X 0.8/.03
TWO PLACES	X,XX	0.15/.006	X,XX 0.38/.015
THREE PLACES	X,XXX		X,XXX 0.13/.005
ANGLES			

SI METRIC

US CUSTOMARY

DESIGN UNITS

WEIGHT .08 LB APPROX

23AT1-G
 PAGE 1 OF 1
 M
 DRAWING NUMBER
 7
 ISSUE
 8
 RELEASE NO. PR-8936
 CHECK
 REVISIONS
 A PR-8936
 D J W
 17 JUL 80
 B CO
 50566-B
 W J M
 6 MAY 82
 C CO
 66089
 G R T
 26 SEP 90
 D CO92636
 G J W
 18 DEC 98
 E 207004
 TSM
 10 DEC 02
 DRAWN
 FO-52848-A
 D J W 17 JUL 80 CHECK