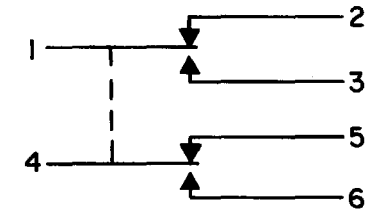
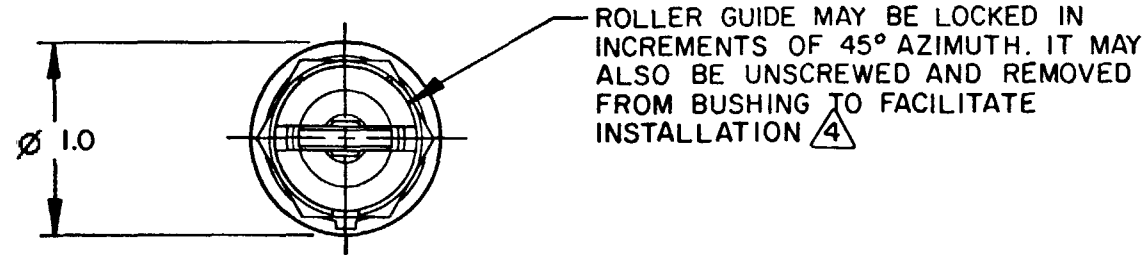


**MICRO SWITCH**  
 FREEPORT ILLINOIS U.S.A.  
 A DIVISION OF HONEYWELL  
 FED. MFG. CODE 91929

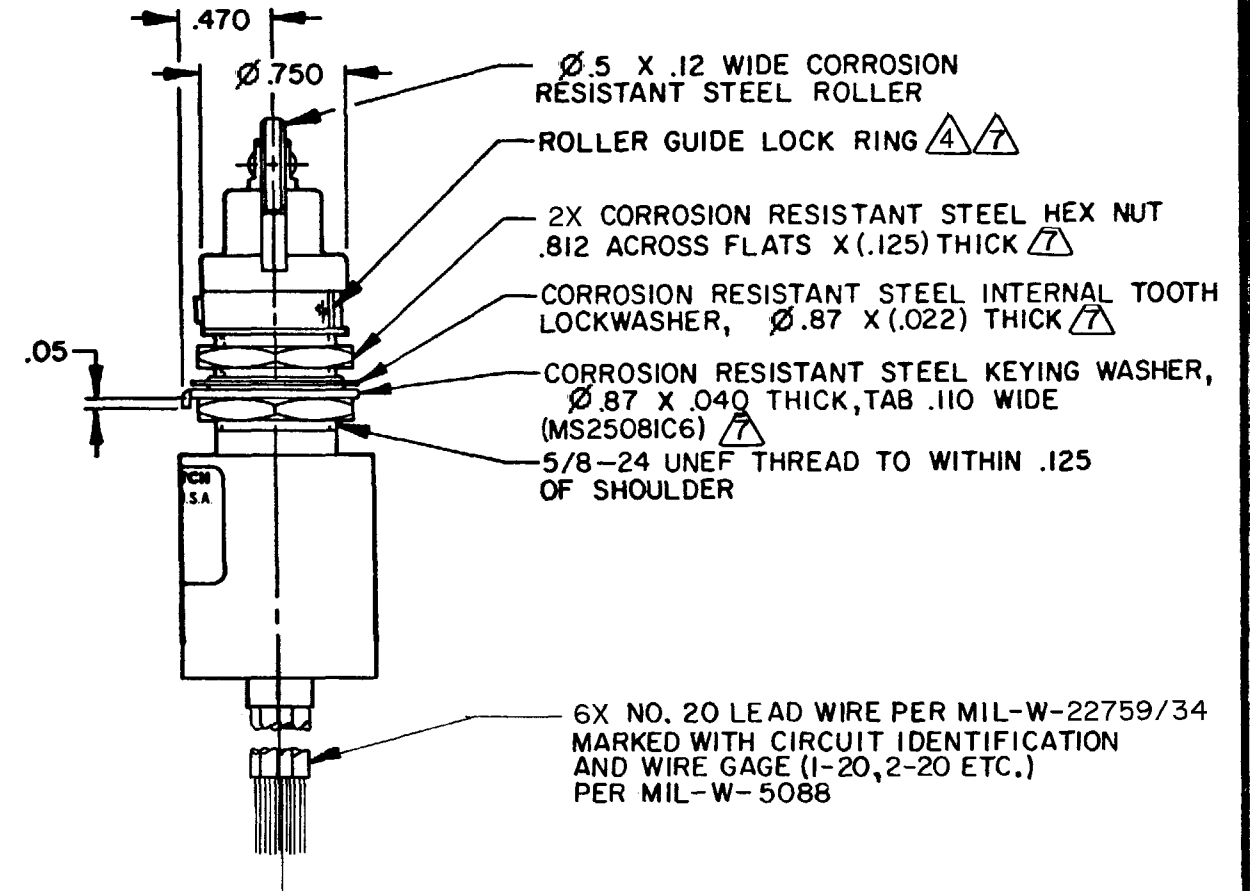
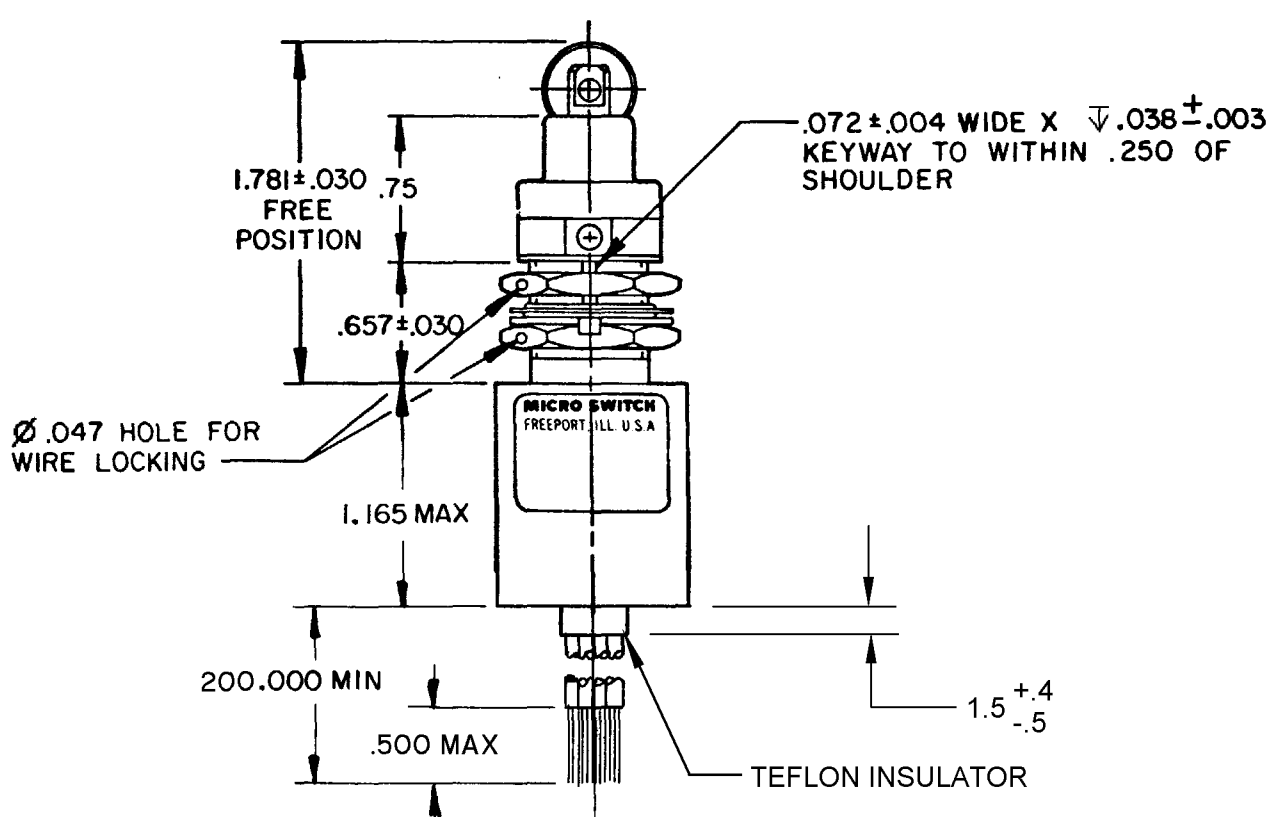
**SWITCH - ENCLOSED**

CATALOG LISTING  
**21HE326-B**



**CIRCUIT DIAGRAM**

CATALOG LISTING  
**21HE326-B**  
 PAGE 1 OF 1  
 RELEASE NO. PR-23419  
 REPLACES  
 DRAWING NUMBER  
**M**  
 ISSUE  
**5**  
 REVISIONS  
 A PR-23419 JJA 4 JUN 98  
 B CO-93529 GJW 15 SEP 98  
 C CO-95711 DLM 3 DEC 99  
 D 202231 CSL 23 JAN 01  
 CHECK  
 JAF 4 JUN 98  
 CHECK  
 TSM 17 DEC 97  
 DRAWN  
 FO-52851-A



ANSI Y14.5M-1982 APPLIES

THIS DRAWING COVERS A PROPRIETARY ITEM AND IS THE PROPERTY OF MICRO SWITCH, A DIVISION OF HONEYWELL. THIS DRAWING IS NOT TO BE COPIED OR USED WITHOUT THE APPROVAL OF MICRO SWITCH.

THIRD ANGLE PROJECTION

SCALE FULL

DO NOT SCALE PRINT

CHARACTERISTICS	
OPERATING FORCE	6-12 LB
FULL OVERTRAVEL FORCE	30 LB MAX
RELEASE FORCE	4 LB MIN
PRETRAVEL	.040 MAX
DIFFERENTIAL TRAVEL	.020 MAX
OVERTRAVEL	.250 MIN

ELECTRICAL DATA		
CONTACT ARRANGEMENT 2X SPDT		
28 VDC		
LOAD	SEA LEVEL	100,000 FT.
RES	5	5
IND	3	3
MOTOR	4	4
LAMP		

TOLERANCES			
APPLY TO DESIGN UNITS. CONVERSIONS ARE ONLY FOR REFERENCE UNLESS NOTED. TOLERANCES ARE ±			
DIM.	TOL.	DIM.	TOL.
mm	mm/in	in	mm/in
NO PLACES	X	1/64	
ONE PLACE	X, X	0.47/018	X, X 0.81/03
TWO PLACES	X, XX	0.151/.008	X, XX 0.381/015
THREE PLACES	X, XXX		X, XXX 0.151/005
ANGLES			
DESIGN UNITS		<input type="checkbox"/> METRIC <input checked="" type="checkbox"/> US CUSTOMARY	
RAW MATERIAL-COMMERCIAL STANDARD MICRO SWITCH STANDARDS APPLY			
DIMENSIONS ARE TO BE MET BEFORE PROTECTIVE COATINGS ARE APPLIED			
WEIGHT		12 OZ MAX	

**NOTES**

- CORROSION RESISTANT STEEL ENCLOSURE
- SWITCH SEALED PER MIL-PRF-8805 SYMBOL 5
- CIRCUIT DIAGRAM AND CATALOG LISTING ARE SHOWN ON NAMEPLATE TO ADJUST ROLLER DIRECTION, REMOVE ROLLER GUIDE LOCK RING, SCREW ROLLER GUIDE DOWN AS FAR AS POSSIBLE, THEN UNSCREW TO DESIRED DIRECTION. SECURE BY REPLACING ROLLER GUIDE LOCK RING
- FOR OPERATION IN TEMPERATURES OF -65°F TO +257°F
- COINCIDENCE OF OPERATING AND RELEASING POINTS: .010 INCH OF PLUNGER TRAVEL
- HARDWARE MAY BE PACKAGED UNASSEMBLED PER MIL-PRF-8805