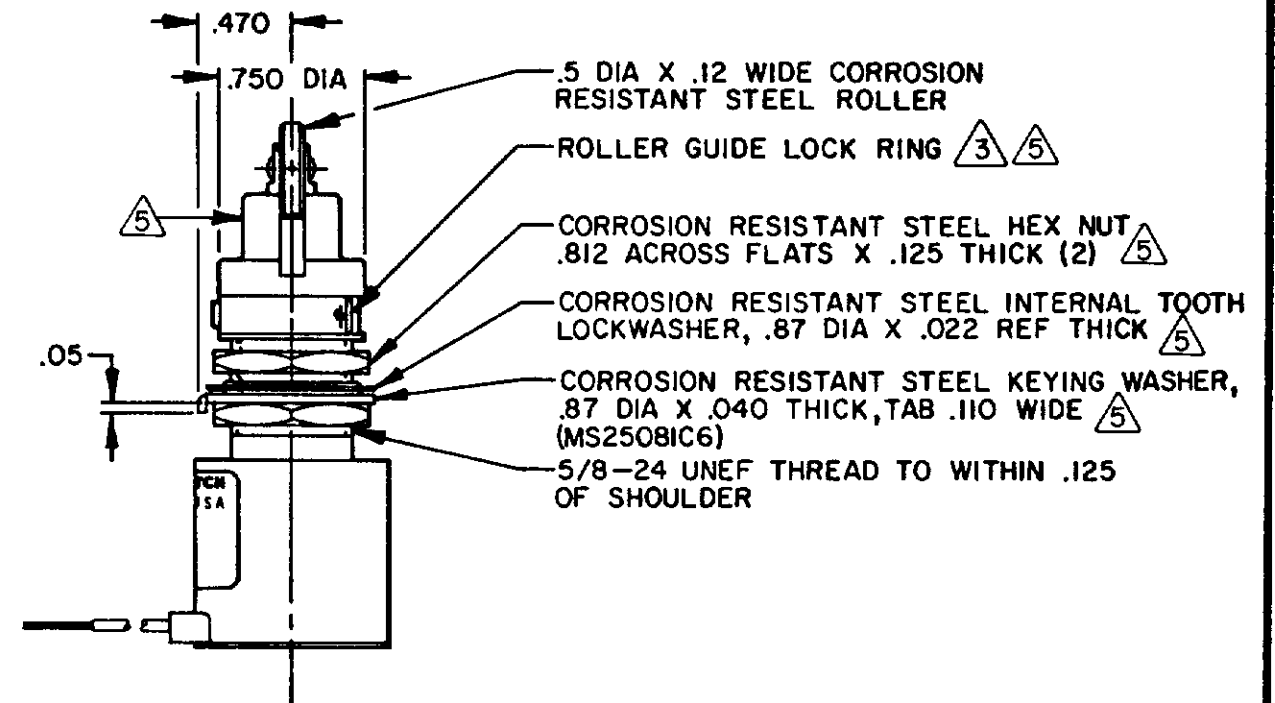
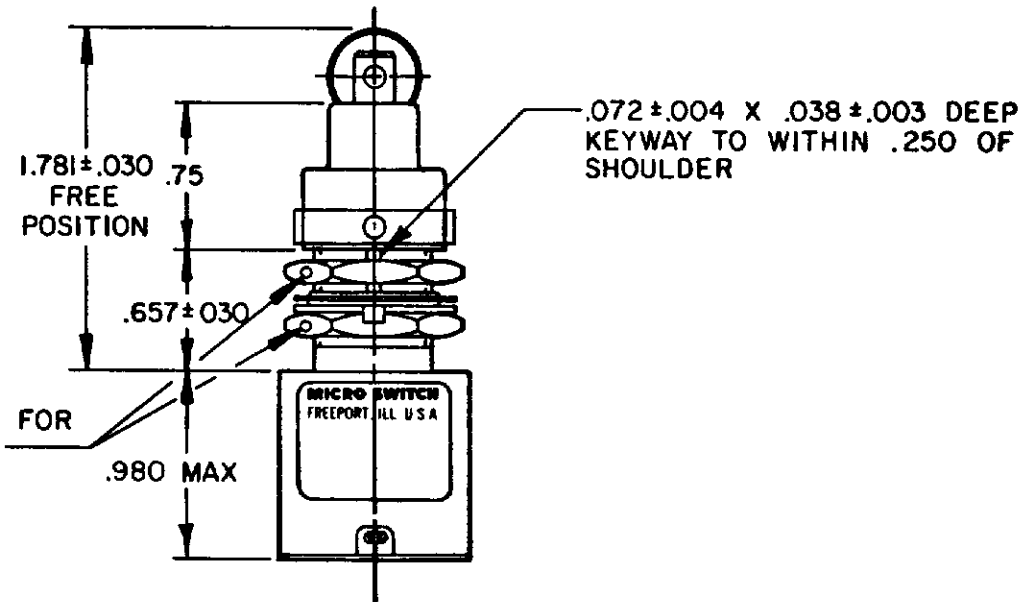
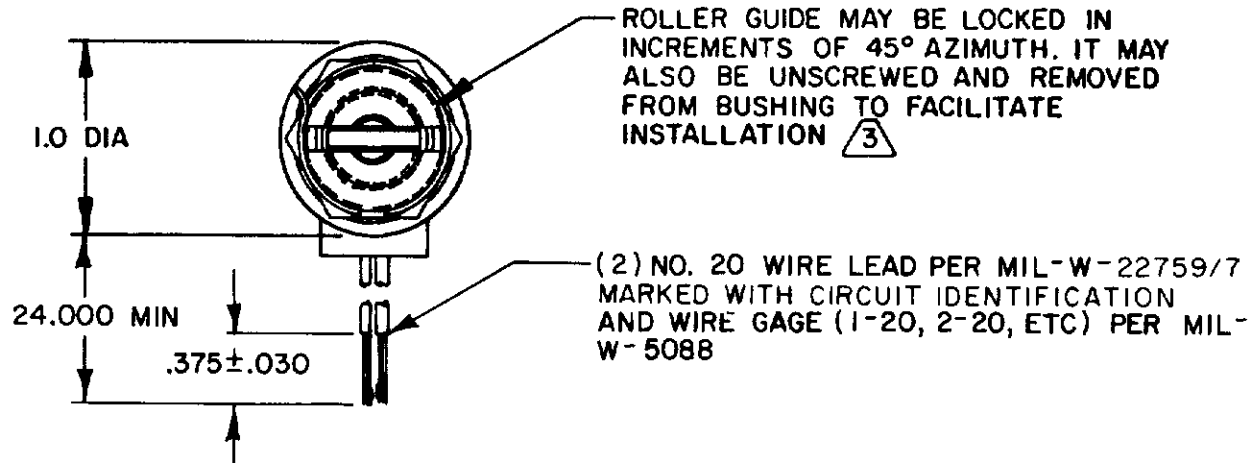
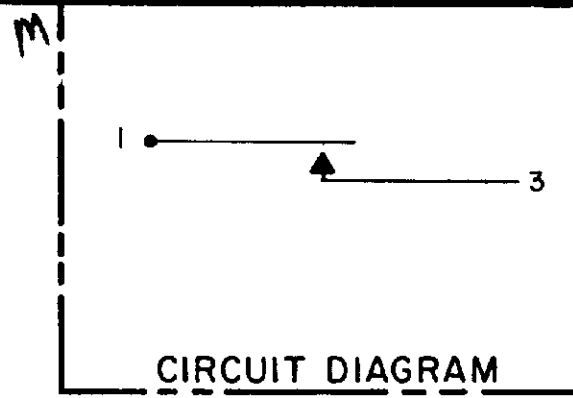


MICRO SWITCH
 FREEPORT ILLINOIS U S A
 A DIVISION OF HONEYWELL
 FED MFG CODE 91929

SWITCH - ENCLOSED

CATALOG LISTING
21EN78-2



- NOTES**
- 1 - CORROSION RESISTANT STEEL ENCLOSURE
 - 2 - SWITCH SEALED PER MIL-S-8805 SYMBOL 4
 - (3) TO ADJUST ROLLER DIRECTION, REMOVE ROLLER GUIDE LOCK RING, SCREW ROLLER GUIDE DOWN AS FAR AS POSSIBLE, THEN UNSCREW TO DESIRED DIRECTION. SECURE BY REPLACING ROLLER GUIDE LOCK RING
 - 4 - CIRCUIT DIAGRAM, CATALOG LISTING, AND DATE CODE ARE SHOWN ON NAMEPLATE
 - (5) HARDWARE MAY BE PACKAGED UNASSEMBLED PER MIL-S-8805

21EN78-2
 M
 DRAWING NUMBER
 18193021
 ISSUE
 18193021
 REVISIONS
 A CO 44351 WJM 18 SEP 79
 B CO 47873 PART 4 R J H 11 AUG 80
 C CO 51725 PART 1 S K 28 JULY 82
 D CO 57370 WJM 14 MAY 85
 E CO 74101 G J W 23 JAN 93
 F CO 77804 S A D 14 MAY 94
 WJM 17 SEP 79
 CHECK CEB 5 OCT 79
 CHECK
 DRAWN
 FO-5285 1-A

| | | | |
|---|-----------|------------------------|----------------------|
| THIS DRAWING COVERS A PROPRIETARY ITEM AND IS THE PROPERTY OF MICRO SWITCH, A DIVISION OF HONEYWELL. THIS DRAWING IS NOT TO BE COPIED OR USED WITHOUT THE APPROVAL OF MICRO SWITCH. | | THIRD ANGLE PROJECTION | SCALE FULL |
| CHARACTERISTICS | | ELECTRICAL DATA | |
| OPERATING FORCE ----- | 6-12 LB | CONTACT ARRANGEMENT | |
| FULL OVERTRAVEL FORCE ----- | 30 LB MAX | S P N O | |
| RELEASE FORCE ----- | 4 LB MIN | 28 VDC | |
| PRETRAVEL ----- | .040 MAX | LOAD | SEA LEVEL 50,000 FT. |
| DIFFERENTIAL TRAVEL ----- | .020 MAX | RES | 4 4 |
| OVERTRAVEL ----- | .250 MIN | IND | 2 2 |
| | | MOTOR | 4 |
| | | LAMP | |
| | | WEIGHT 5.3 OZ MAX | |

| TOLERANCES | | | |
|---|-------|--------------|------|
| APPLY TO DESIGN UNITS. CONVERSIONS ARE ONLY FOR REFERENCE UNLESS NOTED. TOLERANCES ARE: | | | |
| DIM | TOL | DIM | TOL |
| NO PLACES | X | 17/64 | X XX |
| ONE PLACE | X, X | 0.4/0.15 | X XX |
| TWO PLACES | X, XX | 0.16/0.06 | X XX |
| THREE PLACES | X, XX | | X XX |
| ANGLES | | | |
| DESIGN UNITS | | US CUSTOMARY | |
| BI METRIC | | US CUSTOMARY | |
| RAW MATERIAL - COMMERCIAL STANDARD | | | |
| MICRO SWITCH STANDARDS APPLY | | | |
| DIMENSIONS ARE TO BE MET BEFORE PROTECTIVE COATINGS ARE APPLIED | | | |