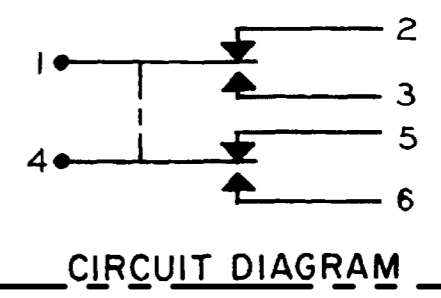
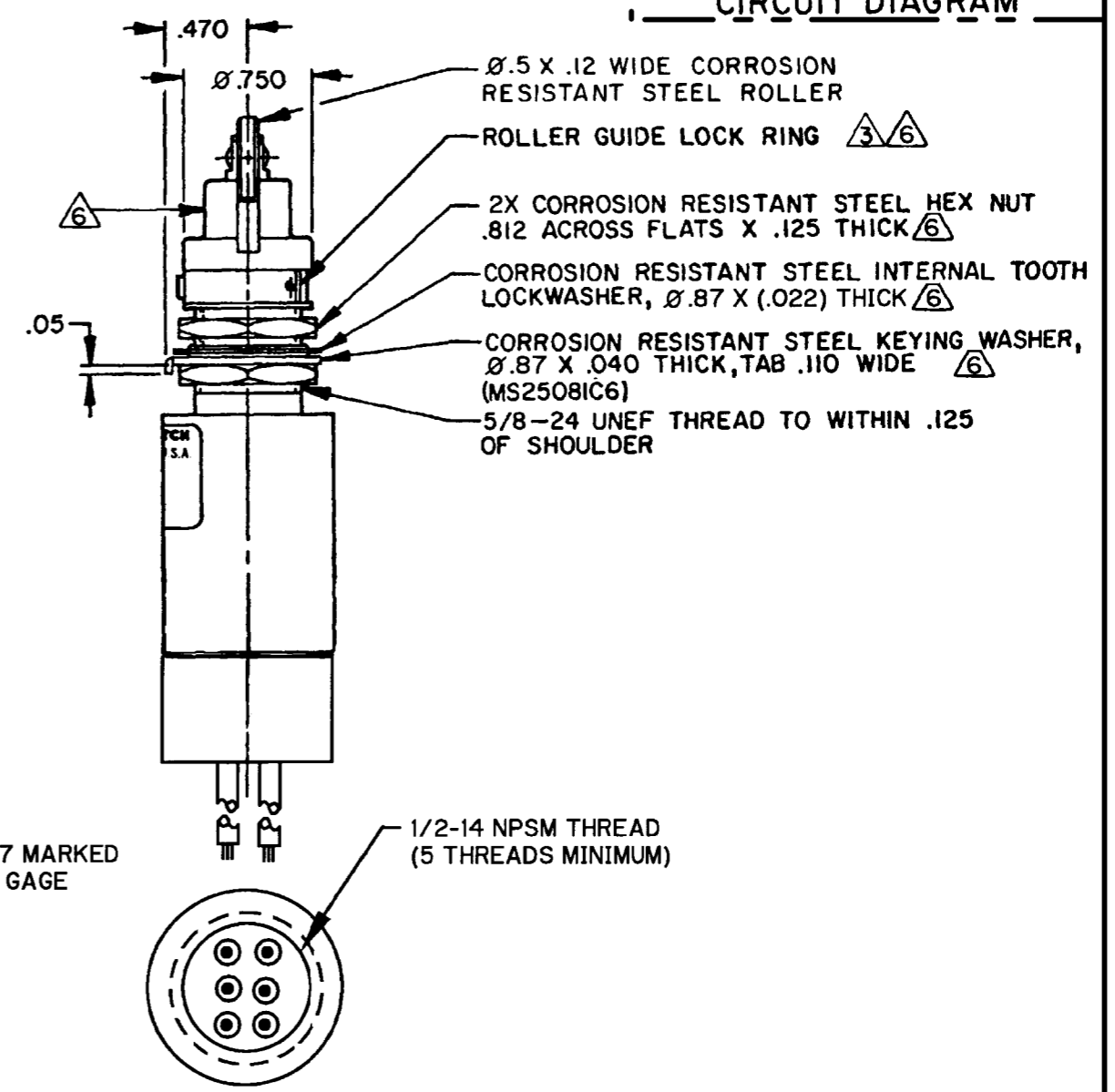
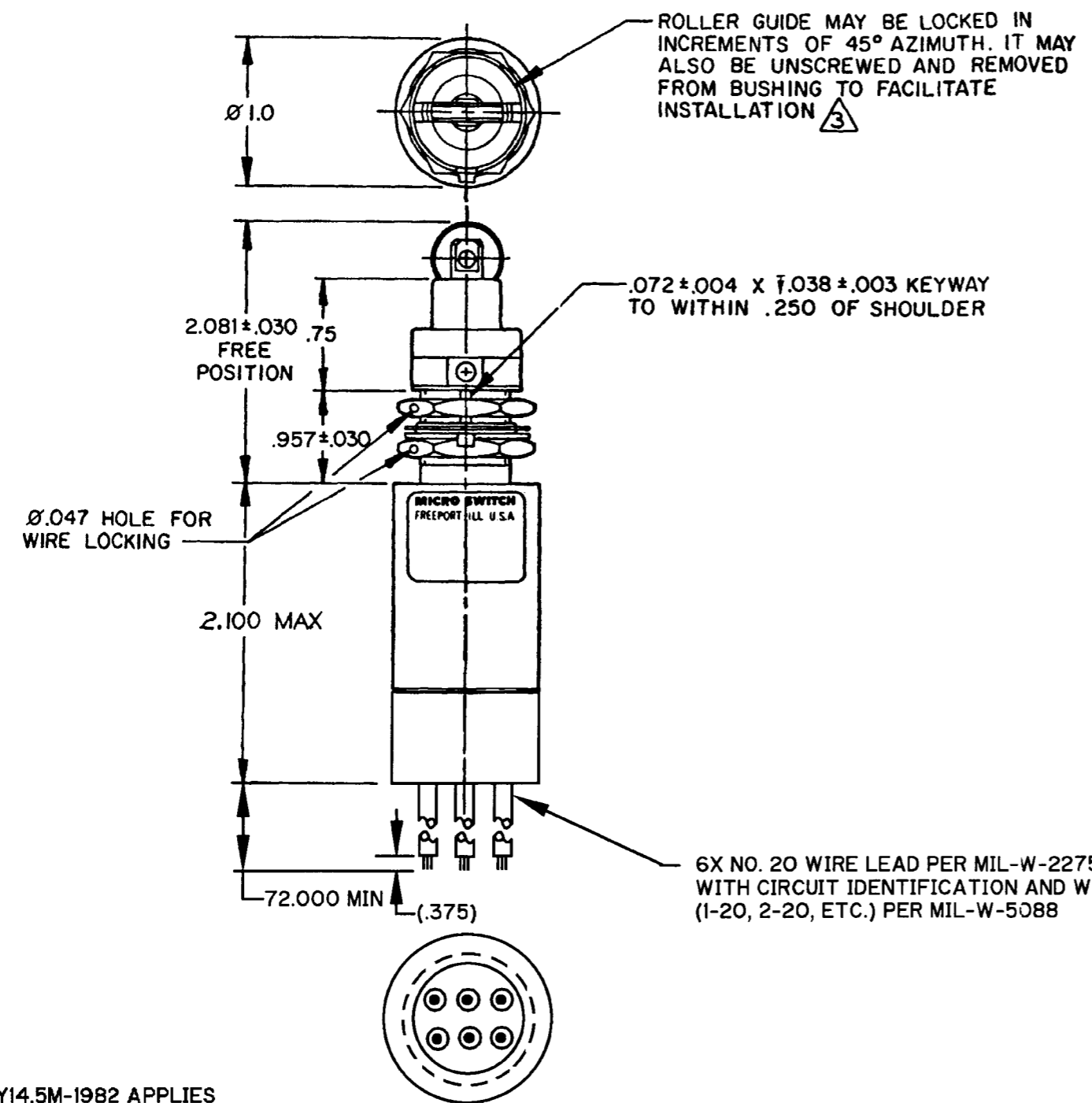


CATALOG LISTING 21EN575-6  
 PAGE 1 OF 1  
 ISSUE 3  
 REVISIONS  
 A PR-24368 DLM 7 DEC 99  
 B 201463 CSL 12 OCT 00  
 CHECK  
 SAV 7 DEC 99  
 CHECK  
 DLM 6 DEC 99  
 DRAWN RASTER  
 X111581-EN  
 REPLACES PR-24368

**MICRO SWITCH**  
 FREEPORT ILLINOIS U.S.A.  
 A DIVISION OF HONEYWELL  
 FED. MFG. CODE 91929

**SWITCH - ENCLOSED**

CATALOG LISTING  
**21EN575-6**



ANSI Y14.5M-1982 APPLIES

THIS DRAWING COVERS A PROPRIETARY ITEM AND IS THE PROPERTY OF MICRO SWITCH, A DIVISION OF HONEYWELL. THIS DRAWING IS NOT TO BE COPIED OR USED WITHOUT THE APPROVAL OF MICRO SWITCH.

THIRD ANGLE PROJECTION

SCALE FULL	
DO NOT SCALE PRINT	
TOLERANCES	
APPLY TO DESIGN UNITS. CONVERSIONS ARE ONLY FOR REFERENCE. UNLESS NOTED, TOLERANCES ARE $\pm$	
NO PLACES	$\pm 1/32$
ONE PLACE	$\pm 0.0015$
TWO PLACES	$\pm 0.0005$
THREE PLACES	$\pm 0.0002$
ANGLES	$\pm 0.005$
DESIGN UNITS	SI METRIC <input type="checkbox"/> US CUSTOMARY <input checked="" type="checkbox"/>
RAW MATERIAL - COMMERCIAL STANDARD MICRO SWITCH STANDARDS APPLY	
DIMENSIONS ARE TO BE MET BEFORE PROTECTIVE COATINGS ARE APPLIED	
WEIGHT	5.25 OZ MAX

CHARACTERISTICS	
OPERATING FORCE	6-12 LB
FULL OVERTRAVEL FORCE	30 LB MAX
RELEASE FORCE	4 LB MIN
PRETRAVEL	.040 MAX
DIFFERENTIAL TRAVEL	.020 MAX
OVERTRAVEL	.250 MIN

ELECTRICAL DATA		
CONTACT ARRANGEMENT		
2X SPDT		
LOAD 28 VDC		
RES	4	4
IND	2	2
MOTOR	4	
	SEA LEVEL	50,000 FT.

- NOTES
- SWITCH SEALED PER MIL-PRF-8805, SYMBOL 4
  - CORROSION RESISTANT STEEL ENCLOSURE
  - $\triangle 3$  TO ADJUST ROLLER DIRECTION, REMOVE ROLLER GUIDE LOCK RING SCREW ROLLER GUIDE DOWN AS FAR AS POSSIBLE, THEN UNSCREW TO DESIRED DIRECTION. SECURE BY REPLACING ROLLER GUIDE LOCK RING
  - CIRCUIT DIAGRAM, DATE CODE, FED MFG CODE, AND CATALOG LISTING ARE SHOWN ON NAMEPLATE
  - COINCIDENCE OF OPERATING AND RELEASING POINTS: .010 OF PLUNGER TRAVEL
  - $\triangle 6$  HARDWARE MAY BE PACKAGED UNASSEMBLED PER MIL-PRF-8805
  - ENCLOSURE FINISHED WITH GRAY EPOXY BASED ENAMEL