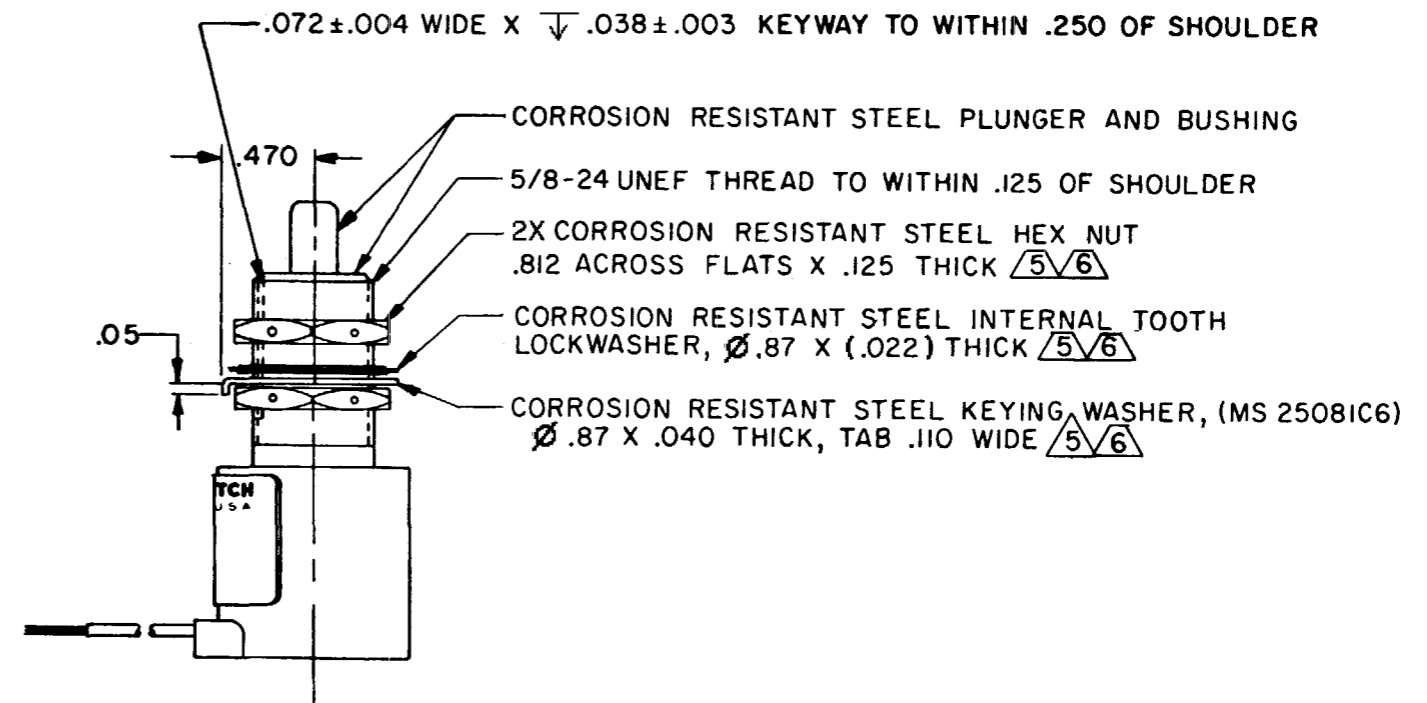
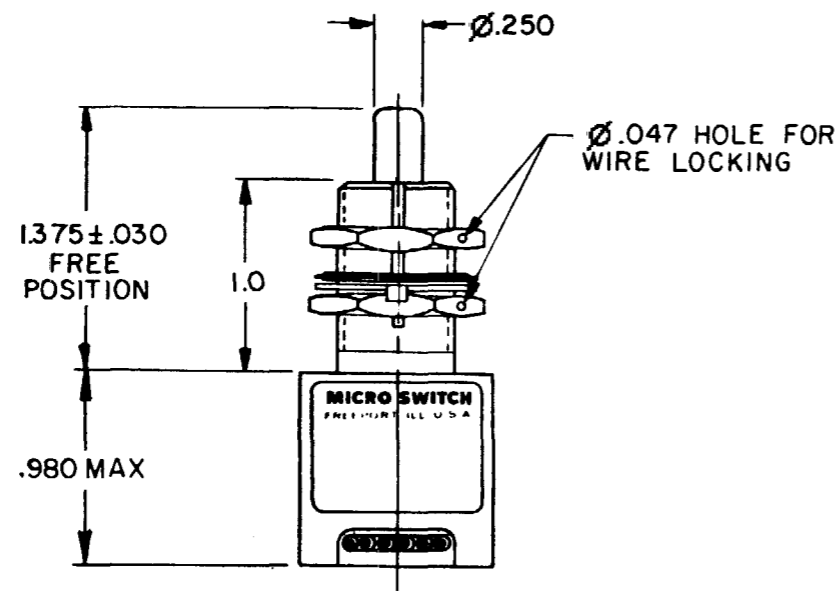
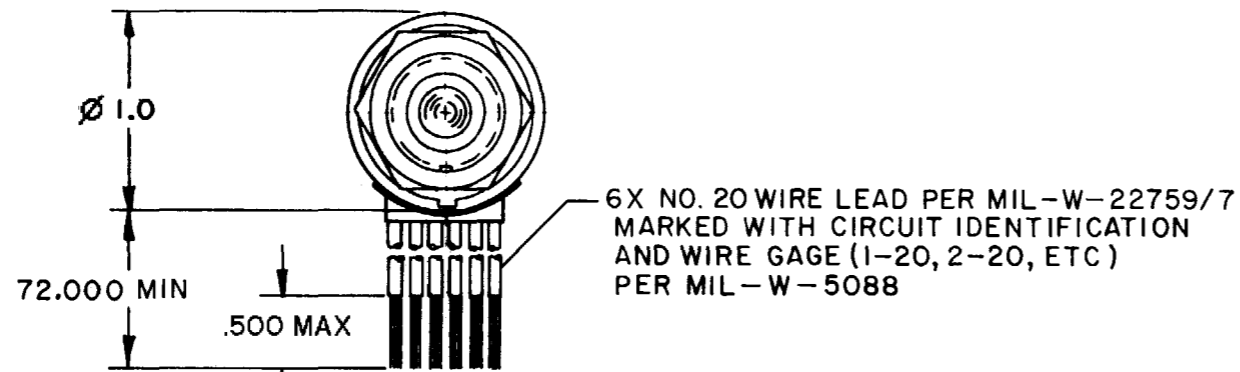
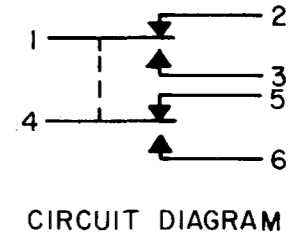


MICRO SWITCH
 FREEPORT ILLINOIS U.S.A.
 A DIVISION OF HONEYWELL
 FED. MFG. CODE 91929

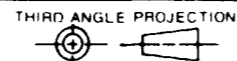
SWITCH - ENCLOSED

CATALOG LISTING
1EN312-6



ANSI Y14.5M-1982 APPLIES

THIS DRAWING COVERS A PROPRIETARY ITEM AND IS THE PROPERTY OF MICRO SWITCH, A DIVISION OF HONEYWELL. THIS DRAWING IS NOT TO BE COPIED OR USED WITHOUT THE APPROVAL OF MICRO SWITCH.



SCALE FULL

DO NOT SCALE PRINT

TOLERANCES

APPLY TO DESIGN UNITS. CONVERSIONS ARE ONLY FOR REFERENCE. UNLESS NOTED, TOLERANCES ARE Z

DIM.	TOL.	DIM.	TOL.
mm	mm/in	in	mm/in
NO. PLACES	X	1/04	
TWO PLACES	X, X	0.47/0.16	X X
THREE PLACES	X, X, X	0.28/0.16	X X X
FOUR PLACES	X, X, X, X	0.15/0.08	X X X X
ANGLES			

DESIGN UNITS SI METRIC US CUSTOMARY

FOR MATERIAL - COMMERCIAL STANDARD MICRO SWITCH STANDARDS APPLY
 DIMENSIONS ARE TO BE MET BEFORE PROTECTIVE COATINGS ARE APPLIED

WEIGHT 7.3 OZ MAX

NOTES

- CORROSION RESISTANT STEEL ENCLOSURE
- SWITCH SEALED PER MIL-S-8805 SYMBOL 4
- CIRCUIT DIAGRAM, DATE CODE, FED. MFG. CODE AND CATALOG LISTING ARE SHOWN ON NAMEPLATE
- COINCIDENCE OF OPERATING AND RELEASING POINTS: .010 OF PLUNGER TRAVEL
- REPLACEMENT MOUNTING HARDWARE-PACKET 19PA8
- HARDWARE MAY BE PACKAGED UNASSEMBLED PER MIL-S-8805

1EN312-6
 PAGE 1 OF 1

M

DRAWING NUMBER

ISSUE 14

REVISIONS

A	CO 44351 PART 7	J A P	4 APR 79	CHECK	14 DEC 98
B	CO 47573	J A P	5 AUG 80	CHECK	JAF
C	CO 51725-D	C J H	11 JAN 83	CHECK	JAF
D	CO 57370	T S K	14 MAY 85	CHECK	JAF
E	CO 74101	G J W	15 JAN 93	CHECK	CEB
F	CO 77524A	J J O	12 MAR 94	CHECK	CEB
G	CO 94005	P P F	14 DEC 98	CHECK	CEB

FORMTEK
 FO-5285 1-A
 DRAWN

RELEASE NO. PR-5515 REPLACES