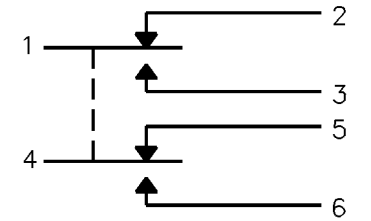


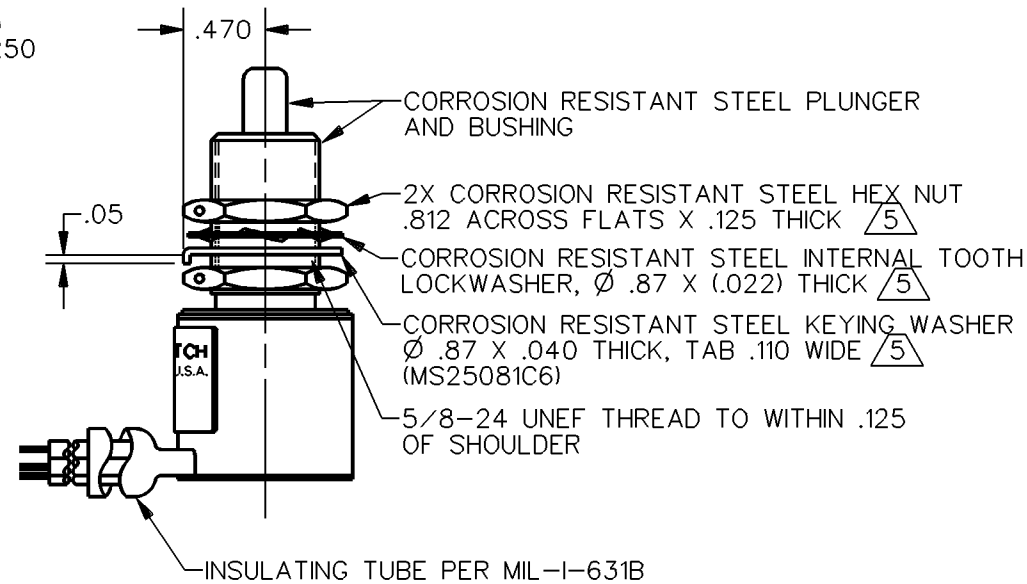
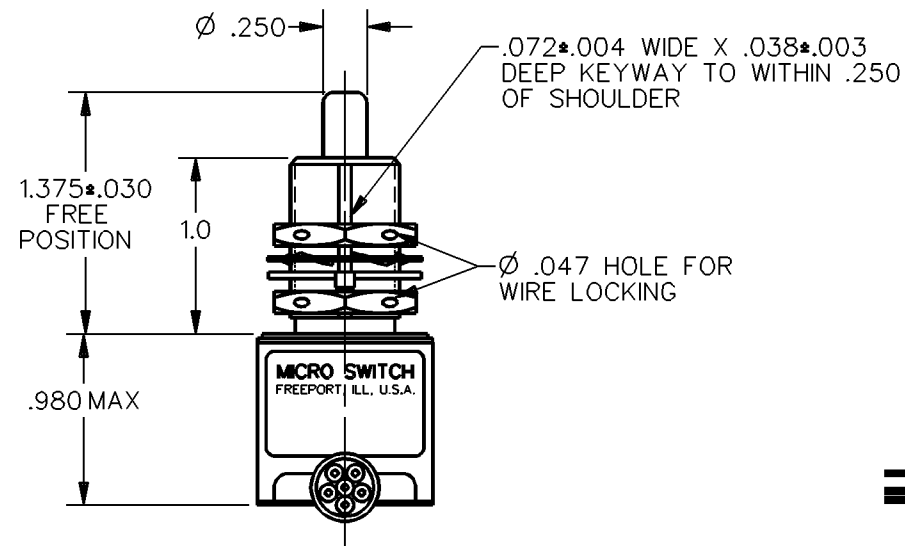
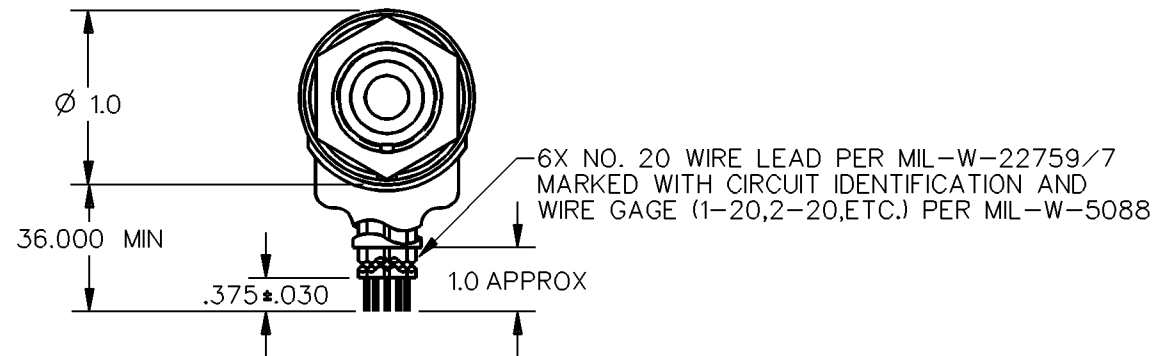
MICRO SWITCH
a Honeywell Division
FED. MFG. CODE 91929

SWITCH - ENCLOSED

CATALOG LISTING
1EN31-3



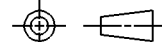
CIRCUIT DIAGRAM



- NOTES
- 1 - CORROSION RESISTANT STEEL ENCLOSURE
 - 2 - SWITCH SEALED PER MIL-S-8805 SYMBOL 4
 - 3 - COINCIDENCE OF OPERATING AND RELEASING POINTS: .010 OF PLUNGER TRAVEL
 - 4 - CIRCUIT DIAGRAM AND CATALOG LISTING ARE SHOWN ON NAMEPLATE
 - 5 HARDWARE MAY BE PACKAGED UNASSEMBLED PER MIL-S-8805

THIS DRAWING COVERS A PROPRIETARY ITEM AND IS THE PROPERTY OF MICRO SWITCH, A DIVISION OF HONEYWELL. THIS DRAWING IS NOT TO BE COPIED OR USED WITHOUT THE APPROVAL OF MICRO SWITCH

THIRD ANGLE PROJECTION



SCALE FULL

DO NOT SCALE PRINT

UNLESS OTHERWISE SPECIFIED TOLERANCES ARE

ONE PLACE	(.0)	± .030
TWO PLACE	(.00)	± .015
THREE PLACE	(.000)	± .005
ANGLES		±
WEIGHT		7.0 OZ MAX

ANSI Y14.5M-1982 APPLIES

CHARACTERISTICS	ELECTRICAL DATA
OPERATING FORCE - - - - - 6-12 LB	CONTACT ARRANGEMENT 2X S P D T
FULL OVERTRAVEL FORCE - - - 30 LB MAX	
RELEASE FORCE - - - - - 4 LB MIN	LOAD
PRETRAVEL - - - - - .040 MAX	RES
DIFFERENTIAL TRAVEL - - - .020 MAX	IND
OVERTRAVEL - - - - - .250 MIN	MOTOR
	LAMP

ELECTRICAL DATA	
CONTACT ARRANGEMENT 2X S P D T	
28 VDC	
LOAD	SEA LEVEL
RES	4
IND	2
MOTOR	4
LAMP	

CATALOG LISTING 1EN31-3
 ISSUE 18
 REVISIONS
 A 77504-A
 S A V
 15 MAR 94
 CHECK
 CHECK
 DDM/CAD
 DRAWN
 S A V 15 MAR 94
 CHECK