

MICRO SWITCH

A DIVISION OF MINNEAPOLIS-HONEYWELL REGULATOR COMPANY
 FREEPORT, MINNESOTA

FED. MFR. CODE 91929

SWITCH - BASIC

CATALOG LISTING

1HS93

5

(M) 1HS93
 ISSUE 2

1HS93

M

DRAWING NUMBER

12

12

ISSUE

12

REPLACES

RELEASE NO.

CHECK

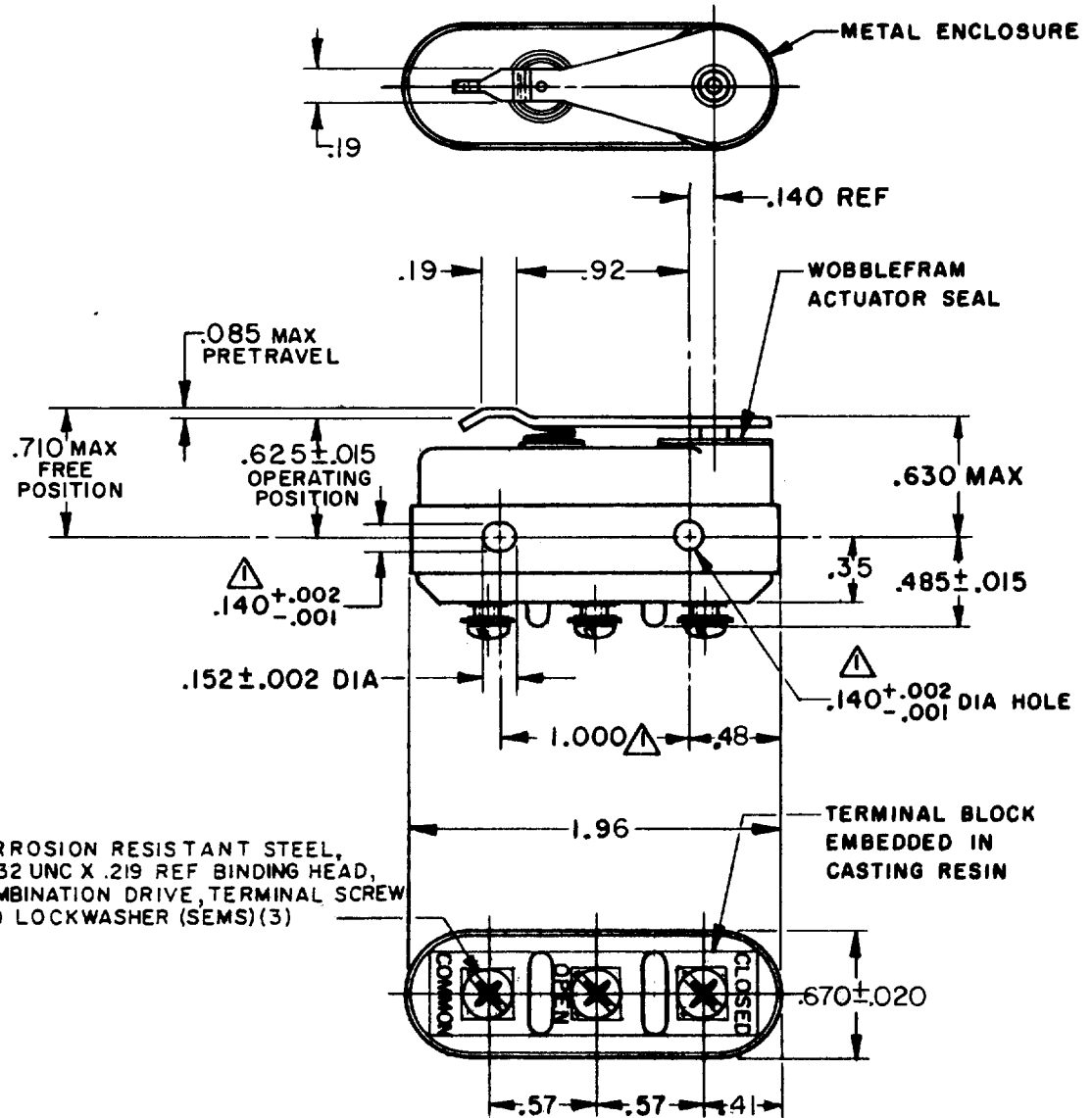
CHECK

CHECK

CHECK

CHECK

CHECK



CORROSION RESISTANT STEEL,
 6-32 UNC X .219 REF BINDING HEAD,
 COMBINATION DRIVE, TERMINAL SCREW
 AND LOCKWASHER (SEMS)(3)

NOTE -
 ▲ - MOUNTING HOLES WILL ACCEPT PINS OR SCREWS OF .139 MAX DIA
 ON 1.000 ± .002 CENTERS
 2 - FOR USE IN AMBIENT TEMPERATURE RANGE FROM MINUS 65°F TO PLUS 250°F

REVISIONS	CHECK	DATE
A CO15761		25 APR 61
B CO30206		13 MAR 72
C CO48756		21 NOV 80
D CO 48858		2 JAN 81
E CO 55162		10 DEC 85
F CO 62736		15 MAR 88
G CO61043		26 AUG 88
H CO72580		20 AUG 92
J CO 73625		15 JULY 93
K CO 76375		2 SEPT 93

THIS DRAWING COVERS A PROPRIETARY ITEM AND IS THE PROPERTY OF MICRO SWITCH, A DIVISION OF MINNEAPOLIS-HONEYWELL REGULATOR CO. THIS DRAWING IS NOT TO BE COPIED OR USED WITHOUT THE APPROVAL OF MICRO SWITCH.

CHARACTERISTICS	ELECTRICAL DATA	SCALE FULL
OPERATING FORCE ----- 32 OZ MAX	CONTACT ARRANGEMENT S P D T	DO NOT SCALE PRINT
RELEASE FORCE ----- 4 OZ MIN	L277 1A-125VAC, 5A-28VDC	UNLESS OTHERWISE SPECIFIED DIMENSIONS ARE IN INCHES
DIFFERENTIAL TRAVEL ----- .020 MAX		TOLERANCES ARE:
OVERTRAVEL ----- .010 MIN		ONE PLACE (.0) ±.030 TWO PLACE (.00) ±.015 THREE PLACE (.000) ±.005 ANGLES ±
		WEIGHT 1.9 OZ MAX



FO-50378