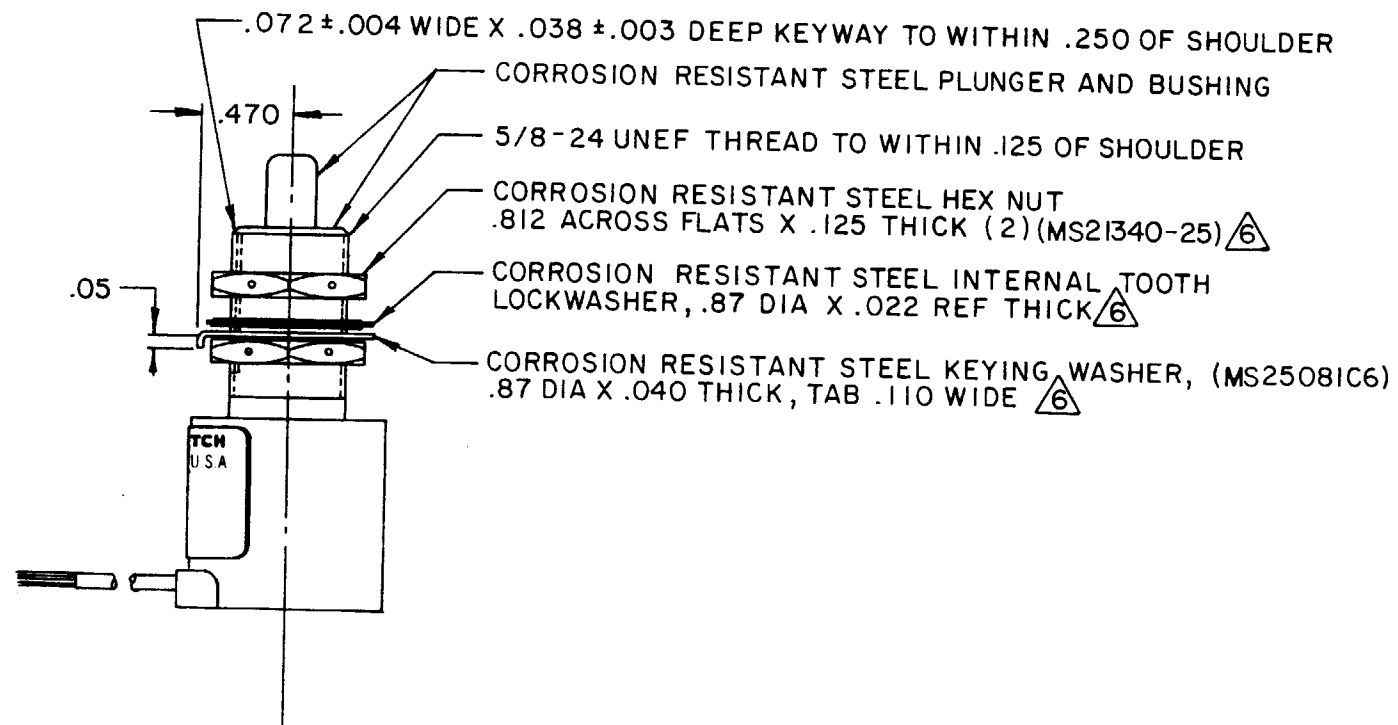
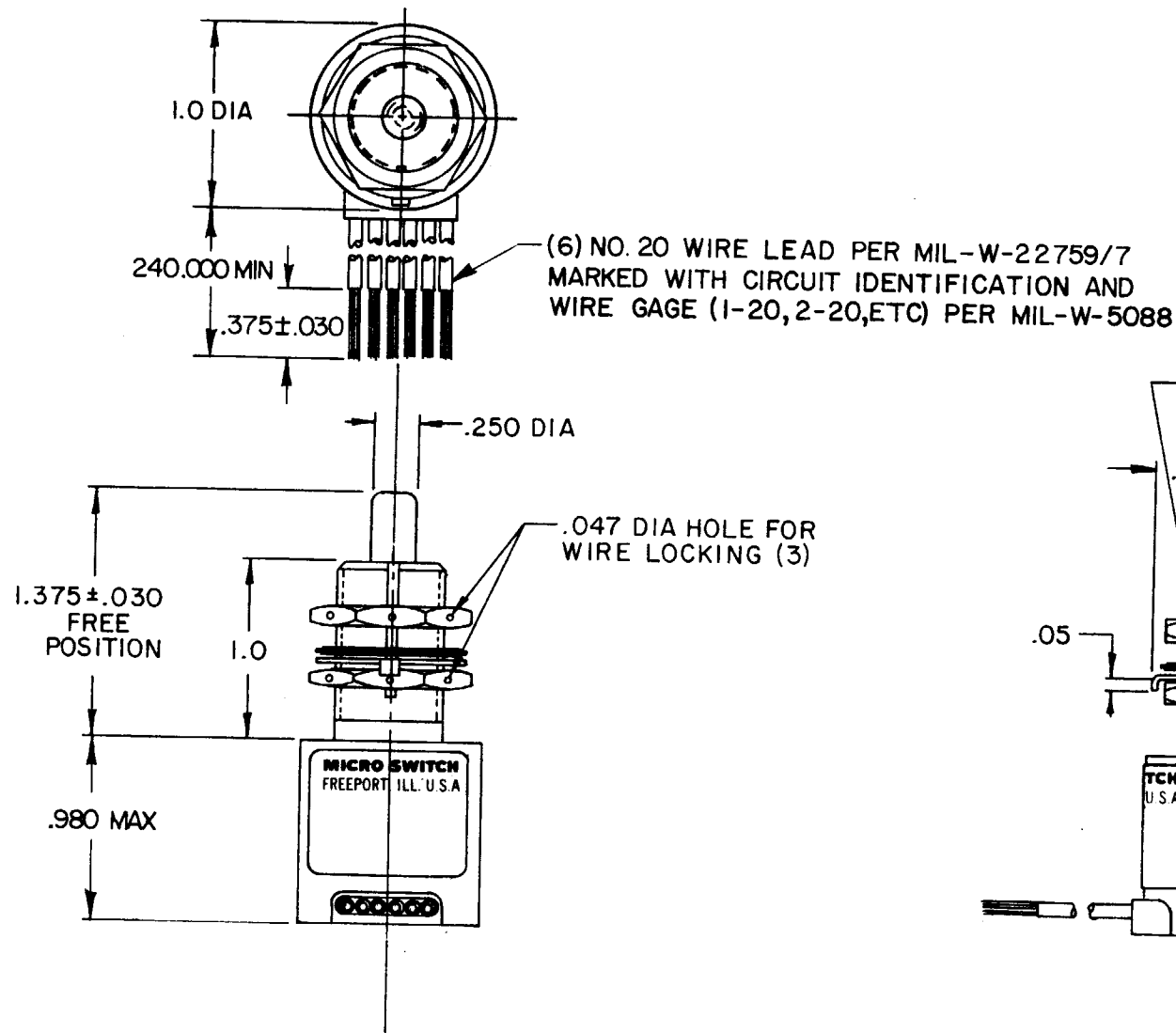
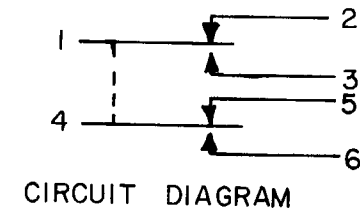


**MICRO SWITCH**  
 FREEPORT, ILLINOIS, U.S.A.  
 A DIVISION OF HONEYWELL  
 FED. MFG. CODE 91929

**SWITCH - ENCLOSED**

CATALOG LISTING  
**1HE1-20**



- NOTES
- 1 - CORROSION RESISTANT STEEL ENCLOSURE
  - 2 - CIRCUIT DIAGRAM AND CATALOG LISTING ARE SHOWN ON NAMEPLATE
  - 3 - FOR OPERATION IN TEMPERATURES OF -65°F TO +257°F
  - 4 - COINCIDENCE OF OPERATING AND RELEASING POINTS: .010 INCH OF PLUNGER TRAVEL
  - 5 - SWITCH SEALED PER MIL-S-8805 SYMBOL 5
  - 6 - HARDWARE MAY BE PACKAGED UNASSEMBLED PER MIL-S-8805

1HE1-20  
 M  
 DRAWING NUMBER  
 2  
 ISSUE  
 X  
 REVISIONS  
 A CO 68359  
 M A M  
 7 SEP 90  
 JAS 29 JUNE 84  
 CHECK  
 FO-52861-B  
 DRAWN  
 JAS 29 JUNE 84  
 CHECK  
 RELEASE NO. PR-13134  
 REPLACES

THIS DRAWING COVERS A PROPRIETARY ITEM AND IS THE PROPERTY OF MICRO SWITCH, A DIVISION OF HONEYWELL. THIS DRAWING IS NOT TO BE COPIED OR USED WITHOUT THE APPROVAL OF MICRO SWITCH.

CHARACTERISTICS		ELECTRICAL DATA	
OPERATING FORCE	6-12 LB	CONTACT ARRANGEMENT	
FULL OVERTRAVEL FORCE	30 LB MAX	S P D T (2)	
RELEASE FORCE	4 LB MIN	LOAD	28 VDC
PRETRAVEL	.040 MAX	RES	5 AMP
DIFFERENTIAL TRAVEL	.020 MAX	IND	3 AMP
OVERTRAVEL	.250 MIN	MOTOR	4 AMP
			SEA LEVEL & 100,000 FT.

SCALE	FULL		
DO NOT SCALE PRINT			
TOLERANCES			
APPLY TO DESIGN UNITS. CONVERSIONS ARE ONLY FOR REFERENCE. UNLESS NOTED, TOLERANCES ARE ±			
DIM.	TOL.	DIM.	TOL.
mm	mm/in	in	mm/in
NO PLACES	x	1/04	
ONE PLACE	x x	0.4/016	x x 0.8/03
TWO PLACES	x x x	0.15/006	x x x 0.38/015
THREE PLACES	x x x x		x x x x 0.13/005
ANGLES			
DESIGN UNITS	SI METRIC <input type="checkbox"/>	US CUSTOMARY	<input checked="" type="checkbox"/>
THIRD ANGLE PROJECTION			
WEIGHT	7.5 OZ MAX		