
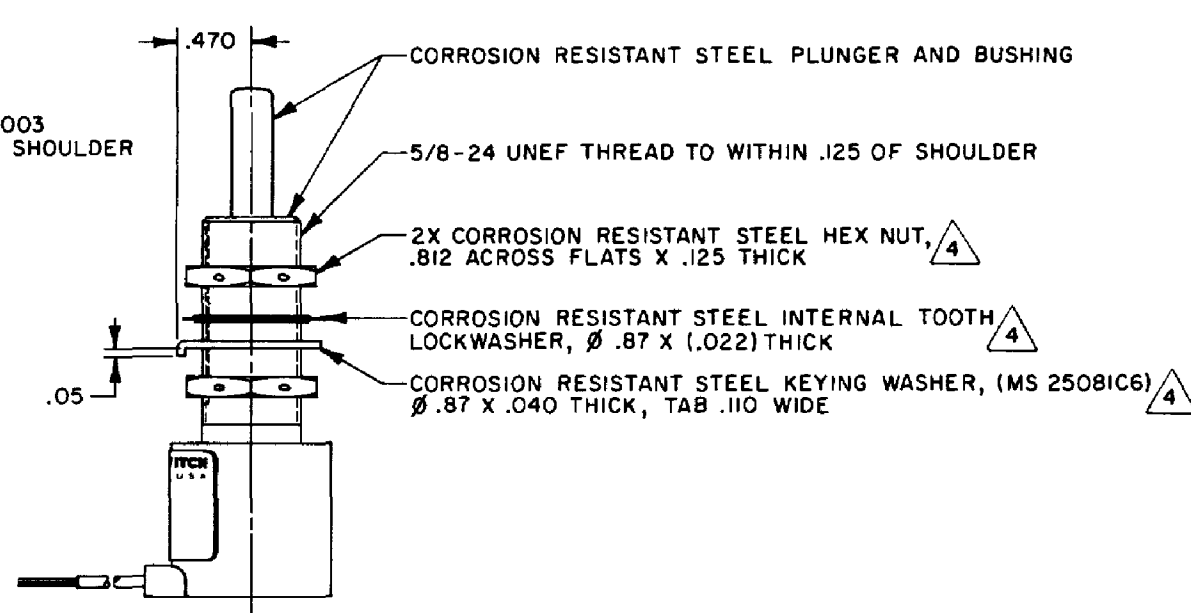
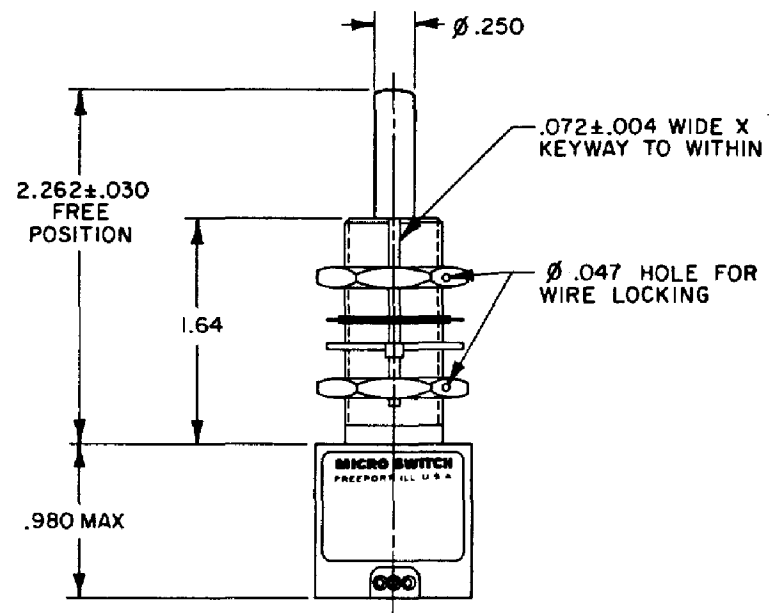
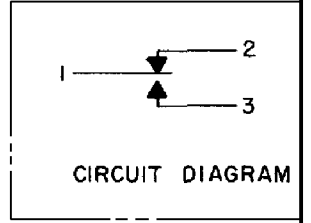
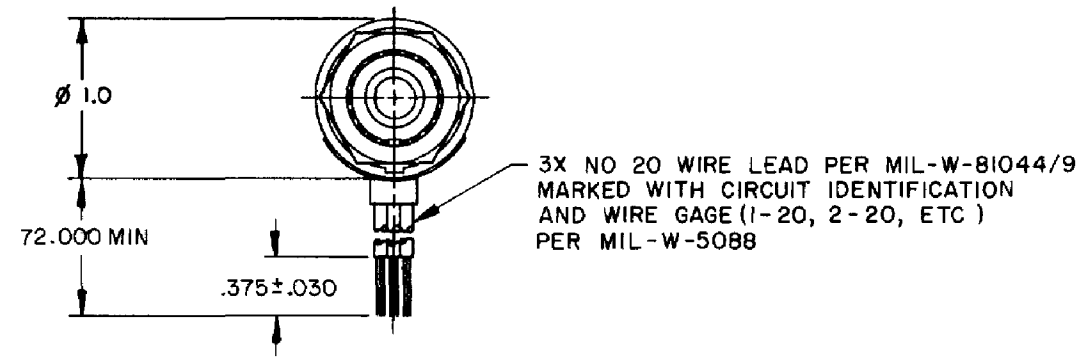


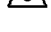


HONEYWELL
PART NUMBER
1EN605-6
FAA - PMA 


REV	DOCUMENT	CHANGED BY	CHECK
6	0010577	KSR 19JAN05	AK



- NOTES
- 1 - CORROSION RESISTANT STEEL ENCLOSURE
 - 2 - SWITCH SEALED PER MIL-S-8805 SYMBOL 4
 - 3 - CIRCUIT DIAGRAM, FAA-PMA, DATE CODE, FED.MFG. CODE AND CAT. LISTING ARE SHOWN ON NAMEPLATE
 -  4 - HARDWARE MAY BE PACKAGED UNASSEMBLED PER MIL-S-8805
 -  5 - BASIC SWITCHES HAVE SOLID GOLD CONTACT MATERIAL
 -  6 - FOR MANUFACTURING DETAIL SEE ASSEMBLY DRAWING 1EN605 - 6 FOR FAA-PMA

CHARACTERISTICS	
OPERATING FORCE	6-12 LB
FULL OVERTRAVEL FORCE	30 LB MAX
RELEASE FORCE	4 LB MIN
PRETRAVEL	.040 MAX
DIFFERENTIAL TRAVEL	.020 MAX
OVERTRAVEL	.500 MIN

ELECTRICAL DATA		
CONTACT ARRANGEMENT S P D T		
LOAD	28 VDC	
	SEA LEVEL	50,000 FT.
RES	1	1
IND	.5	.5
MOTOR		
LAMP		

DESIGN UNITS: INCH	
TOLERANCES UNLESS NOTED:	
NO PLACE	X ± 0.040
ONE PLACE	.X ± 0.030
TWO PLACE	.XX ± 0.015
THREE PLACE	.XXX ± 0.005
FOUR PLACE	.XXXX ± 0.0005
ANGLES	± 2
THIRD ANGLE PROJECTION	
	

DRAWN	TSK	26FEB85
CHECK	CEC	27FEB85
THIS DRAWING COVERS A PROPRIETARY ITEM AND IS THE PROPERTY OF HONEYWELL. THIS DRAWING IS NOT TO BE COPIED OR USED WITHOUT THE PERMISSION OF HONEYWELL.		
INTERPRET PER ASME Y14.5M-1994 OTHER HONEYWELL ENGINEERING STANDARDS MAY APPLY		
RASTER		

Honeywell			
TITLE SWITCH - ENCLOSED			
SIZE	TYPE	DRAWING NAME	REV
B	I	1EN605 - 6	6
SCALE	1 : 1	WEIGHT 8.0 OZ MAX	SHEET 1 OF 1