

MICRO SWITCH

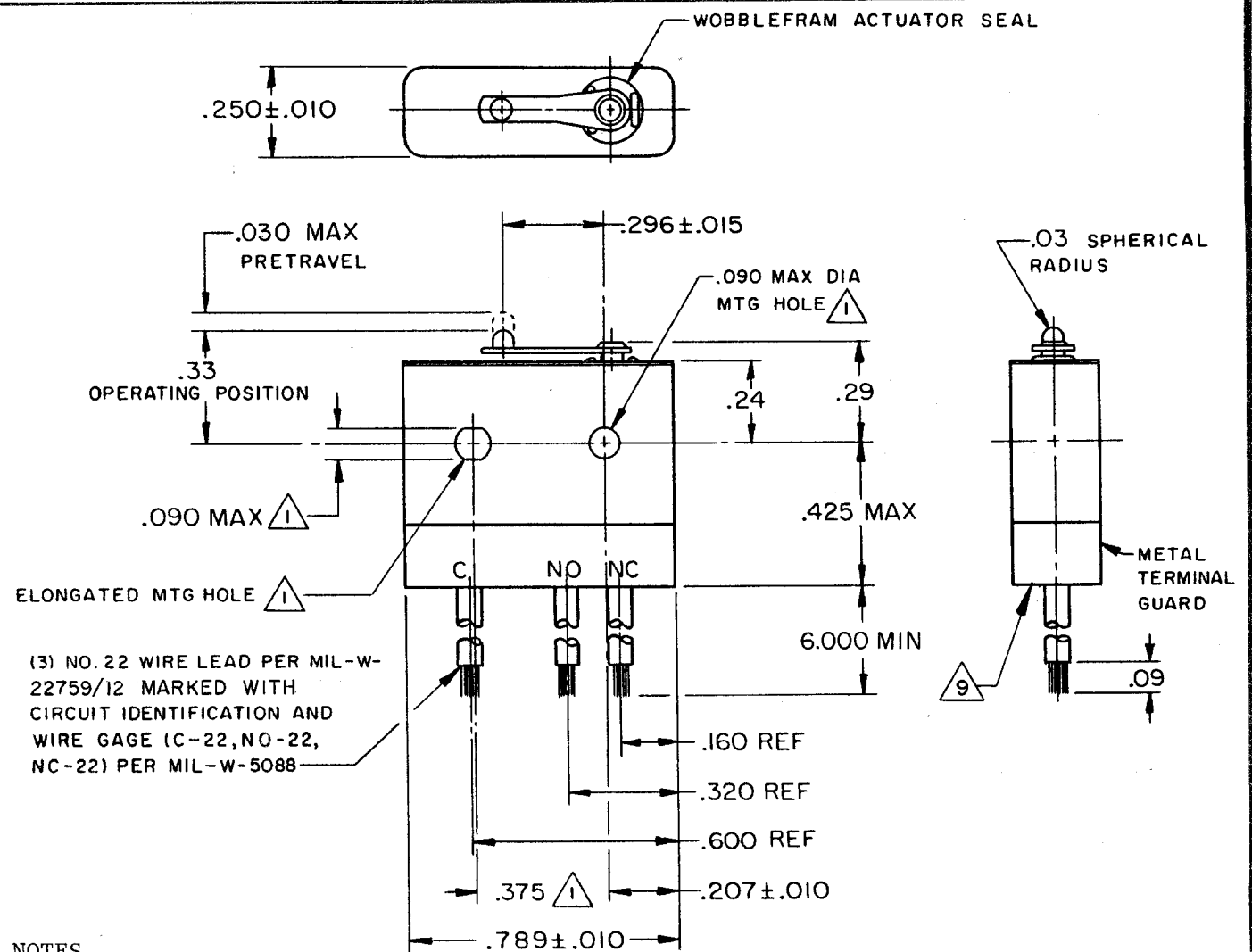
FREEPORT ILLINOIS, U.S.A
A DIVISION OF HONEYWELL INC.
FED. MFG. CODE 91929

SWITCH-BASIC

CATALOG LISTING

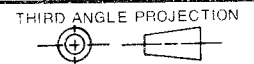
18HM45

18HM45
 M
 DRAWING NUMBER
 X
 ISSUE
 3
 REVISIONS
 A CO71228
 DAW
 29 OCT 91
 B CO80788
 S A D
 26 APR 95
 CHECK
 MAM
 3 NOV 87
 CHECK
 MAM
 3 OCT 87
 DRAWN
 T S K
 FO-52848-B



- NOTES
- 1 MOUNTING HOLES WILL ACCEPT PINS OR SCREWS OF .087 MAX DIA ON .375 ± .002 CENTERS
 - 2 - FOR USE IN TEMP RNG -85°F TO +500°F (DOWN TO -300°F IF WIRE LEADS ARE NOT FLEXED)
 - 3 - HERMETICALLY SEALED (METAL-TO-METAL, GLASS-TO-METAL)
 - 4 - ALL EXPOSED PARTS ARE OF CORROSION RESISTANT MATERIALS
 - 5 WEIGHT OF SWITCH ONLY IS 0.22 OZ MAX. WEIGHT OF CONDUCTOR CABLE ONLY IS 0.14 OZ MAX PER FOOT
 - 6 - DO NOT APPLY MORE THAN 1 1/2 IN-LBS OF TORQUE WHEN TIGHTENING MOUNTING SCREWS
 - 7 - GOLD ALLOY STATIONARY CONTACTS
 - 8 - 24K GOLD MOVABLE CONTACT
 - 9 RELBL OF SPECIAL EPOXY POTTING COMPOUND (STYCAST 2762) HAS NOT BEEN CONFIRMED
 - 10 - SWITCHES MARKED WITH A "-D" UNDER DATE CODE HAVE BEEN BAKED AT 200°F FOR 2 HRS BEFORE PASSING DIELECTRIC TEST

THIS DRAWING COVERS A PROPRIETARY ITEM AND IS THE PROPERTY OF MICRO SWITCH, A DIVISION OF HONEYWELL. THIS DRAWING IS NOT TO BE COPIED OR USED WITHOUT THE APPROVAL OF MICRO SWITCH.



CHARACTERISTICS	ELECTRICAL DATA	SCALE 2:1	DO NOT SCALE PRINT
OPERATING FORCE ----- 7 OZ MAX	CONTACT ARRANGEMENT S P D T		UNLESS OTHERWISE SPECIFIED TOLERANCES ARE
RELEASE FORCE ----- 1 OZ MIN	28 VOLTS DC RATING		ONE PLACE (.0) ± .030
DIFFERENTIAL TRAVEL -- .0003-.0040	INDUCTIVE -- SEA LEVEL --- 1/4 AMP		TWO PLACE (.00) ± .015
OVERTRAVEL ----- .003 MIN	70,000 FT --- 1/4 AMP		THREE PLACE (.000) ± .005
	RESISTIVE -- SEA LEVEL --- 1 AMP		ANGLES ±
	70,000 FT --- 1 AMP		RAW MATERIAL - COMMERCIAL STANDARD
			DIMENSIONS ARE IN INCHES AND ARE TO BE MET BEFORE PROTECTIVE COATINGS ARE APPLIED
			MICRO SWITCH STANDARDS APPLY
			WEIGHT 5