

14XE1-T

M

DRAWING NUMBER

X2

ISSUE

REVISIONS  
 A G022100  
 RFR  
 15 NOV 66

CHECK BRJ 5 APR 65

CHECK BRJ 5 APR 65

CHECK LSD 5 APR 65

CHECK LSD 5 APR 65

CHECK LSD 5 APR 65

CHECK LSD 5 APR 65

CHECK LSD 5 APR 65

CHECK LSD 5 APR 65

CHECK LSD 5 APR 65

CHECK LSD 5 APR 65

MBF 1 APRIL 65

REPLACES

SR 11865

CHECK

5 APR 65

5 APR 65

5 APR 65

5 APR 65

5 APR 65

5 APR 65

5 APR 65

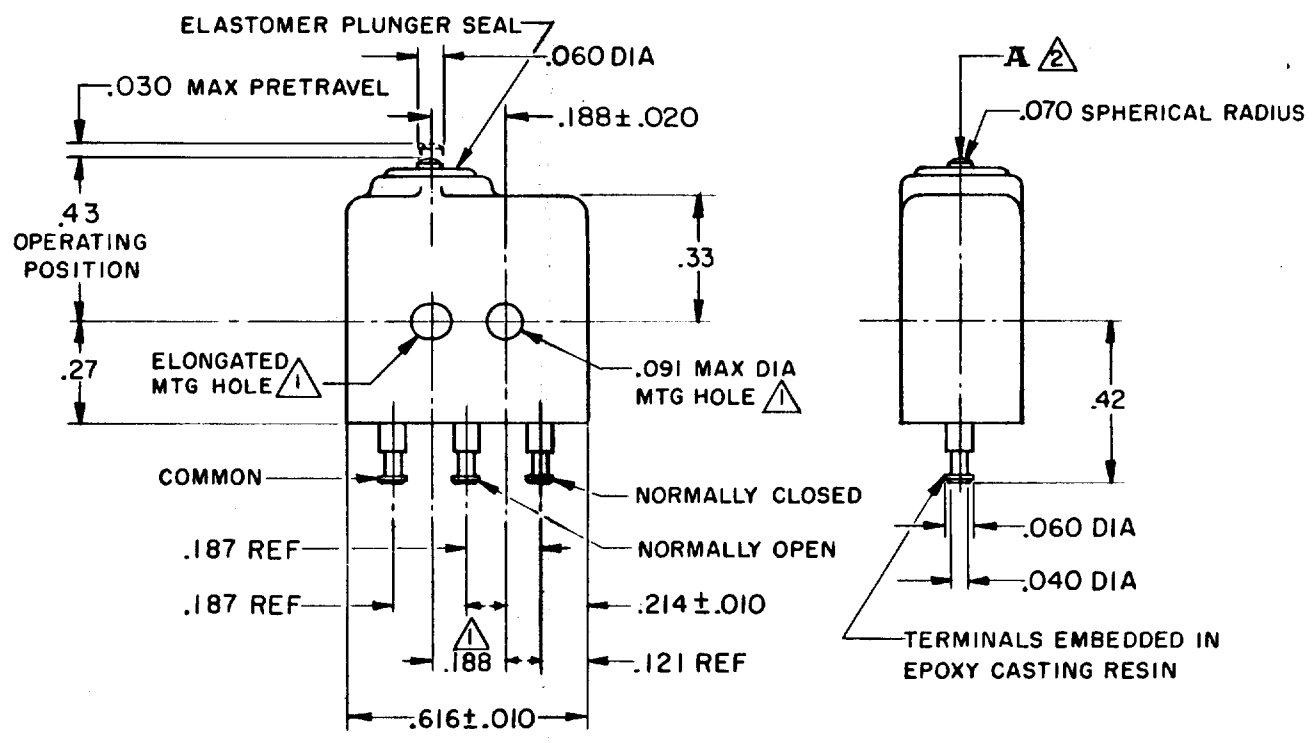
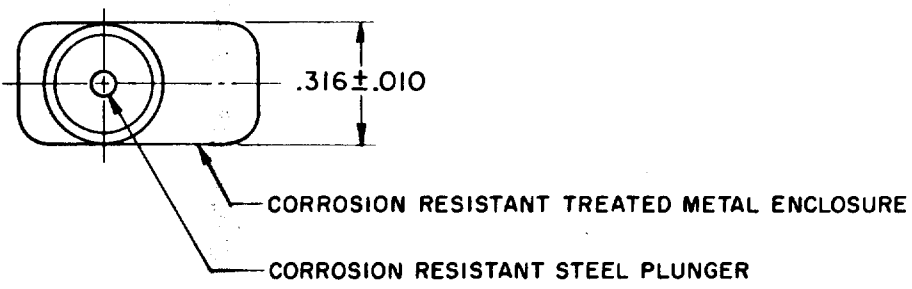
5 APR 65

5 APR 65

5 APR 65

5 APR 65

5 APR 65



NOTE -  
 1- MOUNTING HOLES WILL ACCEPT .087 MAX DIA PINS OR SCREWS ON .188 ± .002 CENTERS  
 2- ACTUATION IN LINE WITH ARROW "A" IS RECOMMENDED  
 3- FOR USE IN TEMPERATURE RANGE FROM MINUS 65° F TO PLUS 300° F

THIS DRAWING COVERS A PROPRIETARY ITEM AND IS THE PROPERTY OF MICRO SWITCH, A DIVISION OF HONEYWELL. THIS DRAWING IS NOT TO BE COPIED OR USED WITHOUT THE APPROVAL OF MICRO SWITCH.

CHARACTERISTICS	
OPERATING FORCE	9 OZ MAX
RELEASE FORCE	2 OZ MIN
RELEASE TRAVEL (A)	.004 MIN
DIFFERENTIAL TRAVEL	.005 MAX
OVERTRAVEL	.004 MIN

ELECTRICAL DATA	
CONTACT ARRANGEMENT S P D T	
28 VOLTS DC RATING	
INDUCTIVE	SEA LEVEL - 4 AMP 50,000 FT - 2.5 AMP
RESISTIVE	SEA LEVEL - 7 AMP 50,000 FT - 7 AMP

SCALE 2 TO 1	
DO NOT SCALE PRINT	
UNLESS OTHERWISE NOTED	
DIMENSIONS ARE IN INCHES	
<b>TOLERANCES ARE:</b>	
ONE PLACE (.0)	± .030
TWO PLACE (.00)	± .015
THREE PLACE (.000)	± .005
ANGLES	±
WEIGHT .16 OZ MAX	