

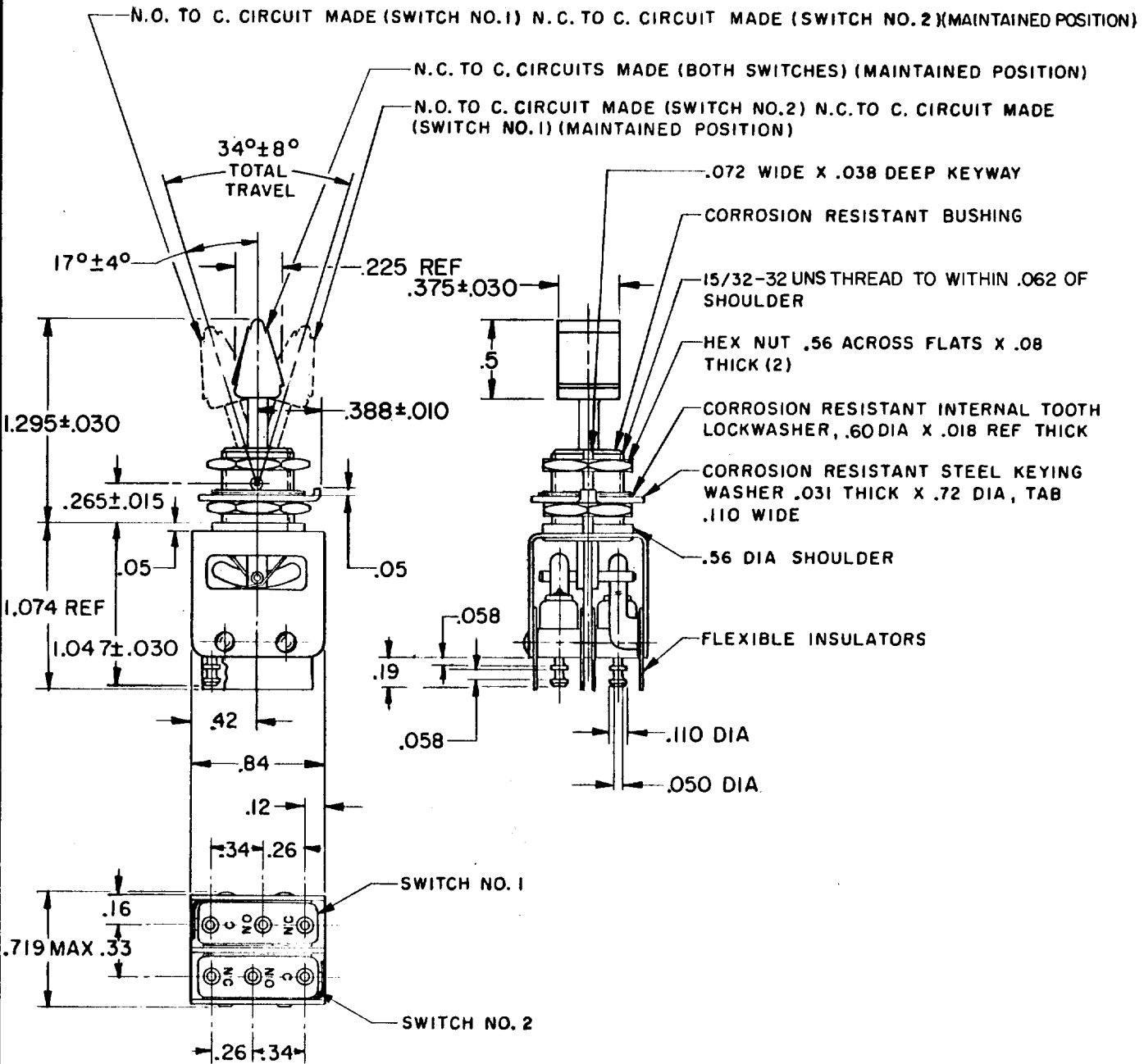
MICRO SWITCH

FREERPORT ILLINOIS, U.S.A
A DIVISION OF HONEYWELL

FED. MFG. CODE 91929

ASSEMBLY TOGGLE SWITCH

CATALOG LISTING
13AT446-T2



NOTE -

- 1- UNIT INCLUDES CAT. LIST. ISMI-T2 TYPE BASIC SWITCH (2)
- 2- TERMINALS ARE PLATED FOR SOLDERING
- 3- LEVER AND TAB COVERED WITH EPOXY BASED PAINT PER FED STD 595 NO.36440 LIGHT GRAY

THIS DRAWING COVERS A PROPRIETARY ITEM AND IS THE PROPERTY OF MICRO SWITCH, A DIVISION OF HONEYWELL. THIS DRAWING IS NOT TO BE COPIED OR USED WITHOUT THE APPROVAL OF MICRO SWITCH.

CHARACTERISTICS

ELECTRICAL DATA

SCALE FULL

CONTACT ARRANGEMENT
S P D T

DO NOT SCALE PRINT

250 VAC ----- 5 AMP

30 VOLTS DC RATING

INDUCTIVE ----- SEA LEVEL --- 3 AMP

50,000 FT --- 2.5 AMP

RESISTIVE ----- SEA LEVEL --- 5 AMP

50,000 FT --- 5 AMP

MAXIMUM INRUSH ----- -24 AMP

UNLESS OTHERWISE NOTED

DIMENSIONS ARE IN INCHES

TOLERANCES ARE:

ONE PLACE	(.01)	$\pm .030$
TWO PLACE	(.00)	$\pm .015$
THREE PLACE	(.000)	$\pm .005$
ANGLES		\pm

WEIGHT .06 LB APPROX

M13AT446-T2
 DRAWING NUMBER
 ISSUE
 REVISIONS
 A WAS EYS PR-8935
 WJM 19 JUN 80
 B CO 50566-B
 WJM 6 MAY 82
 C CO 52725
 S L B 20 MAY 83
 D CO-56281
 G J W 28 SEP 85
 E CO66089
 DAW 21 FEB 91
 CHECK
 19 MAR 71
 LSP
 71
 MAR 17
 DRAWN
 M J B

REPLACES X42486-AT

RELEASE NO PR-8935

CHECK

CHECK

CHECK

CHECK

DRAWN

D-50378-1A