

# MICRO SWITCH

FREEMONT ILLINOIS U S A  
A DIVISION OF HONEYWELL

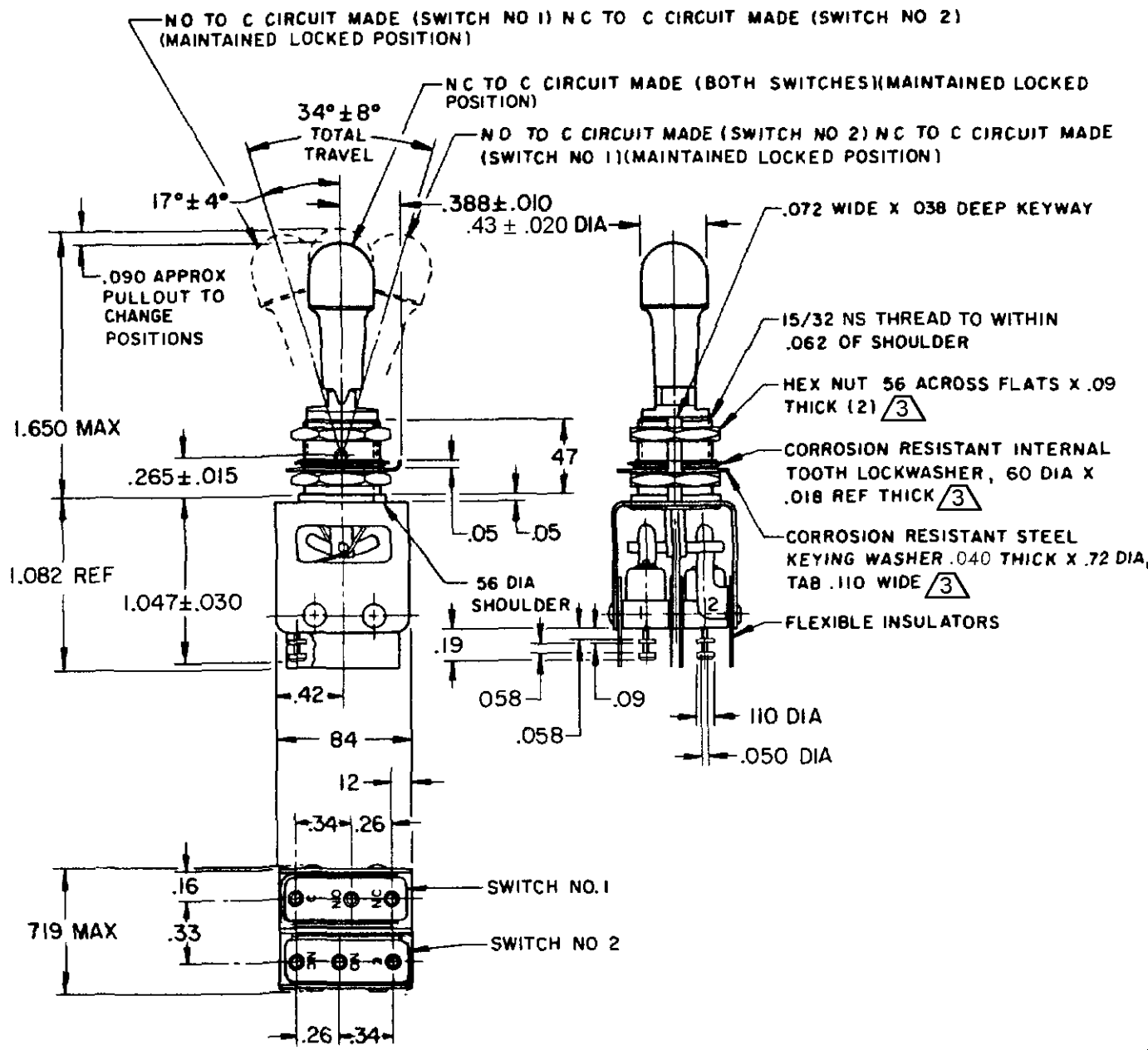
FED MFG CODE 81228

# ASSEMBLY- TOGGLE SWITCH

CATALOG LISTING  
**13AT272-T2-A**

MILITARY P/N  
M8805/92-006

CATALOG LISTING  
**13AT272-T2-A**  
PAGE 1 OF 1  
RELEASE NO PR-1630  
15OCT04  
CHECK AK  
15FEB71  
CHECK AJR  
15FEB71  
CHECK DAW  
15JAN71  
CHECK  
RASTER  
DRAWN  
OMW



- NOTES**
- 1 - UNIT INCLUDES CAT. LIST 21SM284-T2 BASIC SWITCH (MS250852) (2)
  - 2 - TERMINALS ARE PLATED FOR SOLDERING
  - ③ HARDWARE FURNISHED ASSEMBLED WITH SWITCH OR IN PACKET PER MIL-PRF-8805
  - 4 - REPLACEMENT MOUNTING HARDWARE PACKET 15PA311-AT

THIS DRAWING COVERS A PROPRIETARY ITEM AND IS THE PROPERTY OF MICRO SWITCH A DIVISION OF HONEYWELL THIS DRAWING IS NOT TO BE COPIED OR USED WITHOUT THE APPROVAL OF MICRO SWITCH

CHARACTERISTICS		ELECTRICAL DATA			SCALE FULL	
		CONTACT ARRANGEMENT S P D T (2)			DO NOT SCALE PRINT	
		SEA LEVEL		50,000 Ft.		
Load	28 VDC	115 VAC	28 VDC			
Resistive	5	5	5			
Inductive	3	5	2.5			
Lamp	2.4	1.5	2.4			
					UNLESS OTHERWISE NOTED DIMENSIONS ARE IN INCHES <b>TOLERANCES ARE</b>	
					ONE PLACE ( ) ± .030	
					TWO PLACE ( . ) ± .015	
					THREE PLACE ( .00 ) ± .005	
					ANGLES ± .005	
					WEIGHT .06 LB	