

MICRO SWITCH
 FREEPORT, ILLINOIS, U.S.A.
 A DIVISION OF HONEYWELL
 FED. MFG. CODE 91929

**ASSEMBLY -
 TOGGLE SWITCH**

CATALOG LISTING
13AT2-A

13AT2-A
 PAGE 1 OF 1

M

9

ISSUE

REVISIONS

A	CO	52725
6 JUN 83		
B	CO	66089
8 FEB 91		
C	CO	92636
16 DEC 98		
D		207070
19 DEC 02		

TSM

19 DEC 02

CHECK

13 JUN 83

CHECK

6 JUN 83

CHECK

6 JUN 83

CHECK

6 JUN 83

CHECK

6 JUN 83

CHECK

6 JUN 83

REPLACES

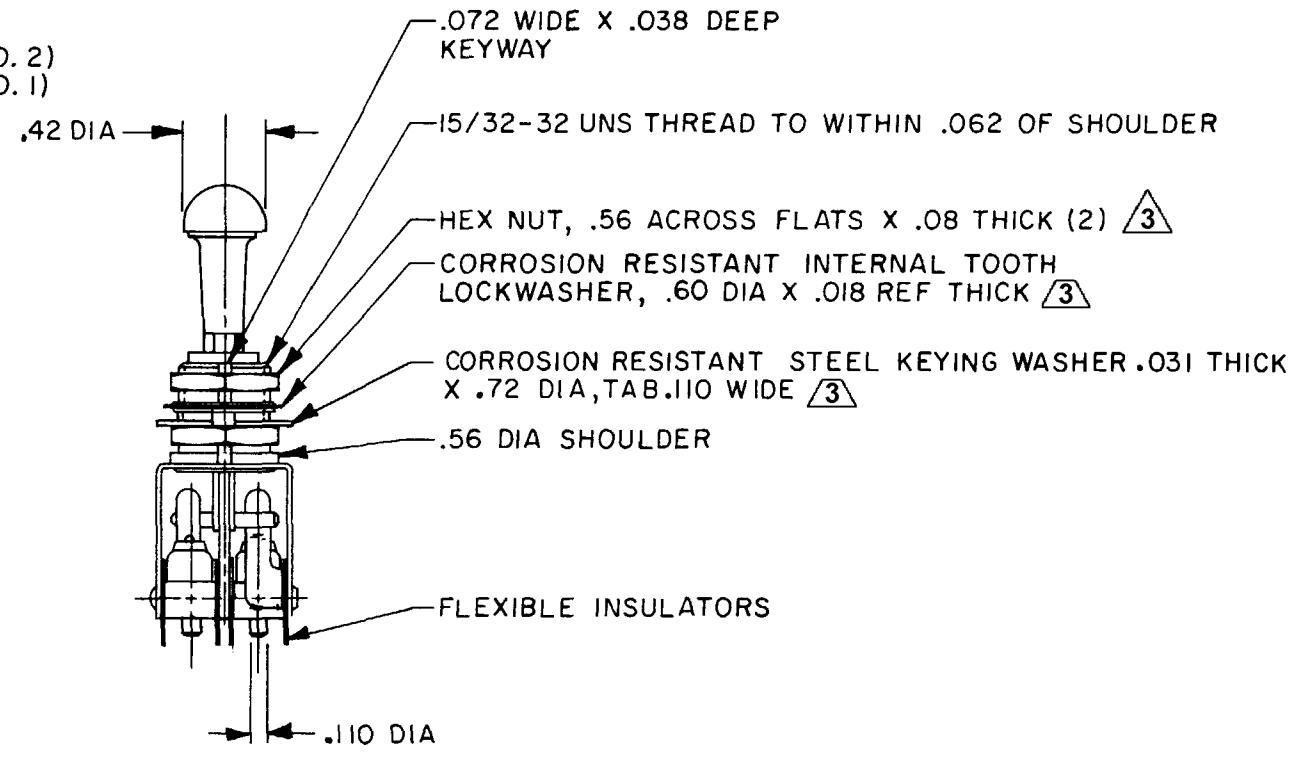
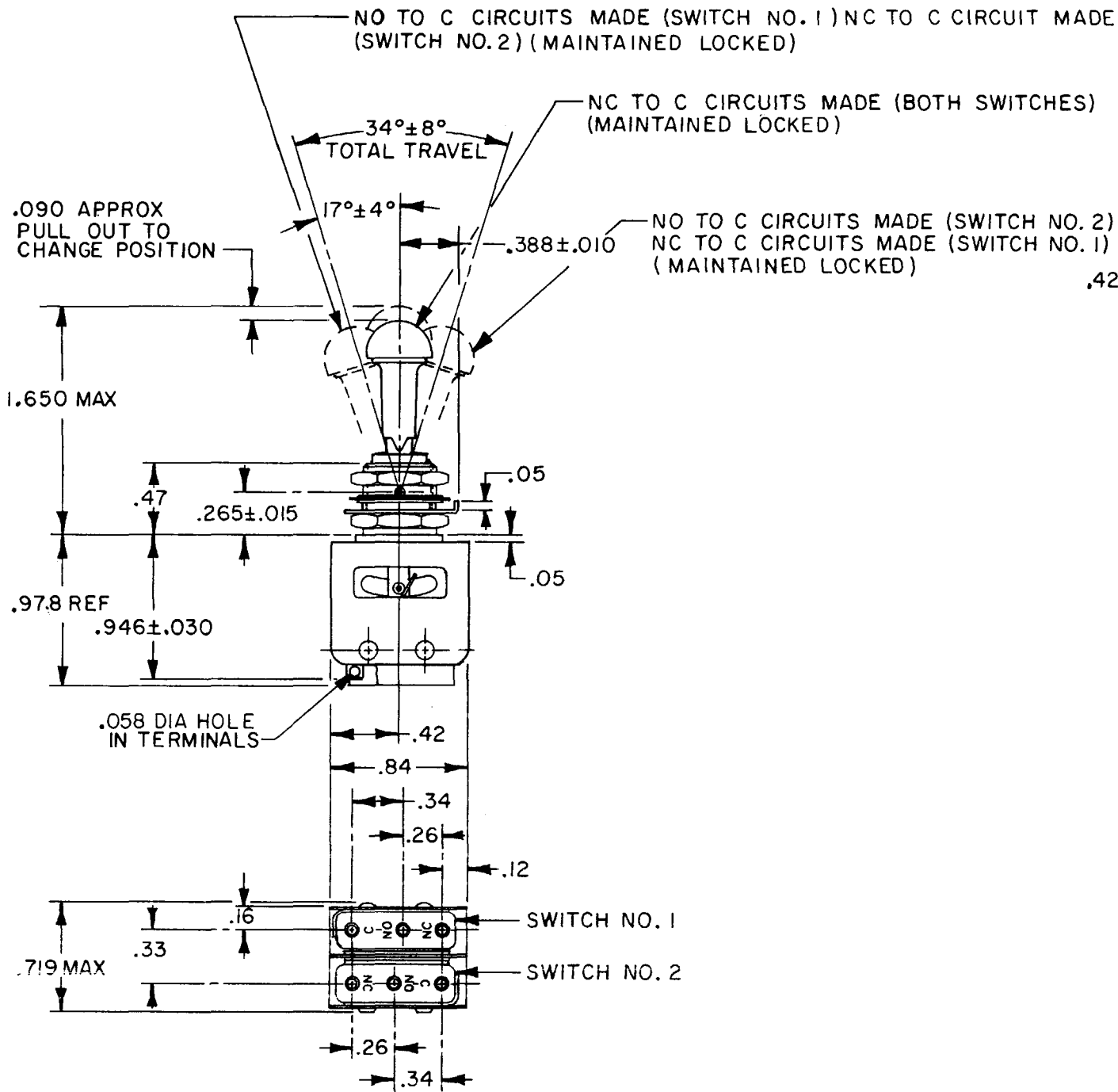
RELEASE NO. SR-9693

CHECK

CHECK

CHECK

CHECK



- NOTES
- 1 - UNIT INCLUDES (2) CATALOG LISTING 1SM1 TYPE BASIC SWITCHES
 - 2 - TERMINALS ARE PLATED FOR SOLDERING
 - ③ HARDWARE FURNISHED ASSEMBLED WITH SWITCH OR IN PACKET PER MIL-PRF-8805
 - 4 - REPLACEMENT MOUNTING HARDWARE PACKET 15PA312-AT

THIS DRAWING COVERS A PROPRIETARY ITEM AND IS THE PROPERTY OF MICRO SWITCH, A DIVISION OF HONEYWELL. THIS DRAWING IS NOT TO BE COPIED OR USED WITHOUT THE APPROVAL OF MICRO SWITCH.

CHARACTERISTICS	ELECTRICAL DATA
	CONTACT ARRANGEMENT S P D T (2)
	250 VAC ----- 5 AMP
	30 VOLTS DC RATING
	INDUCTIVE ----- SEA LEVEL --- 3 AMP 50,000 FT --- 2.5 AMP
	RESISTIVE ----- SEA LEVEL --- 5 AMP 50,000 FT --- 5 AMP
	MAXIMUM INRUSH ----- 24 AMP

SCALE FULL

DO NOT SCALE PRINT

TOLERANCES

APPLY TO DESIGN UNITS. CONVERSIONS ARE ONLY FOR REFERENCE. UNLESS NOTED, TOLERANCES ARE 2

DM.	TOL.	DM.	TOL.
mm	mm/10	in	mm/10
NO PLACES	X	1/104	
ONE PLACE	X,X	0.47/018	X,X 0.81/05
TWO PLACES	X,XX	0.15/008	X,XX 0.38/015
THREE PLACES	X,XXX		X,XXX 0.13/005

DESIGN UNITS SI METRIC US CUSTOMARY

THIRD ANGLE PROJECTION

WEIGHT .06 LB

RASTER
 FO-92851-B

DRAWN