

# MICRO SWITCH

FREERPORT ILLINOIS, U.S.A  
A DIVISION OF HONEYWELL  
FED. MFG. CODE 91929

# ASSEMBLY- TOGGLE SWITCH

CATALOG LISTING

## 13AT196-A

REPLACES X45611 -AT

RELEASE NO. PR-1B29

CHECK 27 APR 71

CHECK 23 OCT 98

CHECK 18 DEC 02

CHECK 27 APR 71

CHECK 23 OCT 98

CHECK 18 DEC 02

CHECK 27 APR 71

CHECK 23 OCT 98

CHECK 18 DEC 02

13AT196-A

PAGE 1 OF 1

M

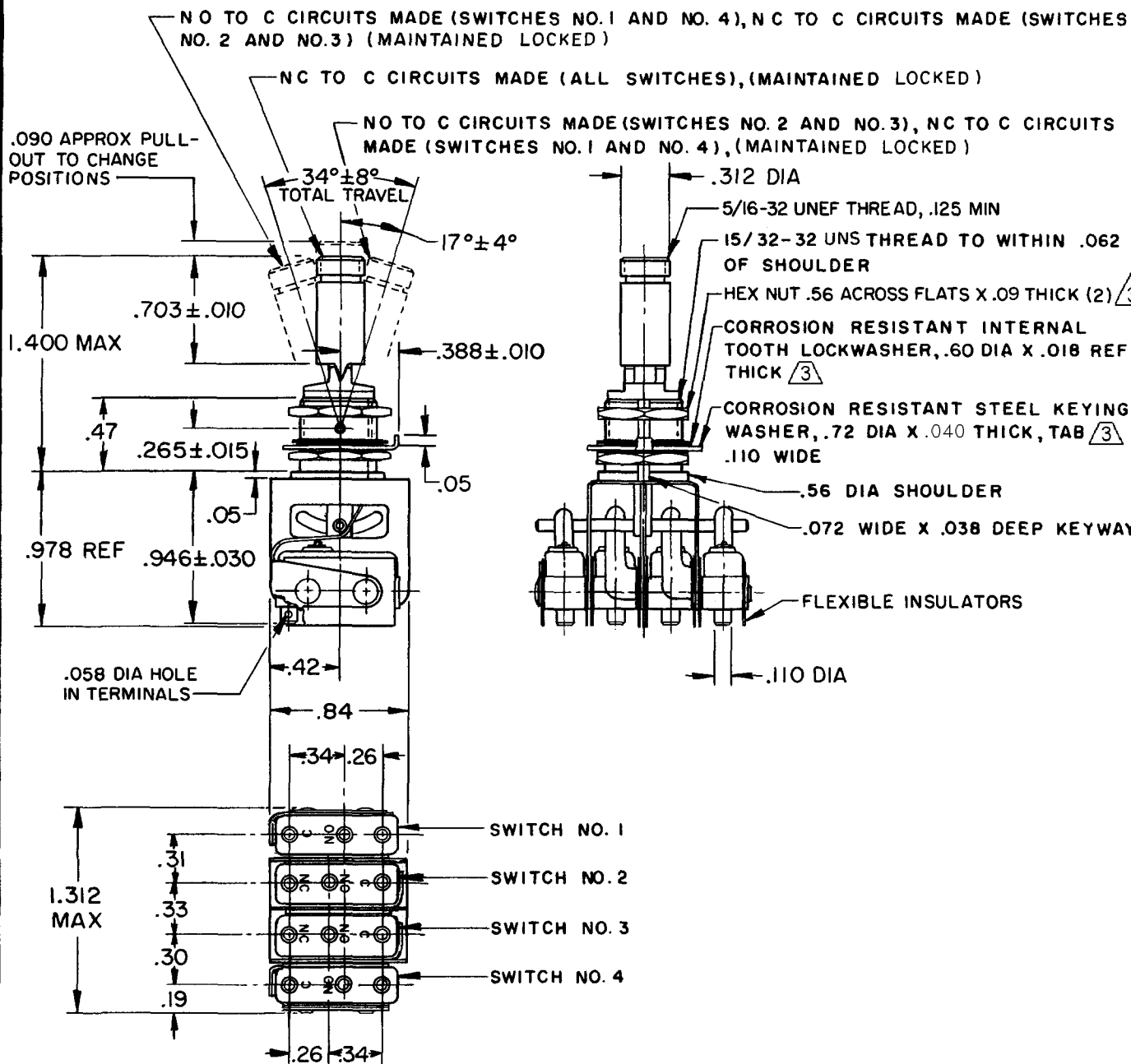
DRAWING NUMBER

7

ISSUE

REVISIONS

A	C080402	JALA	11 APR 95
B	C093688	MPO	23 OCT 98
C	207070	T S M	18 DEC 02



NOTES

- 1 - UNIT INCLUDES CATALOG LISTING 21SM284 (MS 25085-1) TYPE BASIC SWITCH (4)
- 2 - TERMINALS ARE PLATED FOR SOLDERING
- 3 - HARDWARE FURNISHED UNASSEMBLED WITH SWITCH OR IN PACKET PER MIL-PRF-8805
- 4 - REPLACEMENT MOUNTING HARDWARE PACKET 15PA311-AT

THIS DRAWING COVERS A PROPRIETARY ITEM AND IS THE PROPERTY OF MICRO SWITCH, A DIVISION OF HONEYWELL. THIS DRAWING IS NOT TO BE COPIED OR USED WITHOUT THE APPROVAL OF MICRO SWITCH.

CHARACTERISTICS

ELECTRICAL DATA

SCALE FULL

CONTACT ARRANGEMENT  
S P D T (4)

DO NOT SCALE PRINT

UNLESS OTHERWISE NOTED

DIMENSIONS ARE IN INCHES

TOLERANCES ARE:

ONE PLACE	(.0)	± .030
TWO PLACE	(.00)	± .015
THREE PLACE	(.000)	± .005
ANGLES		±

WEIGHT

RASTER

DRAWN

OMW 22 APR 71