

LR-Series



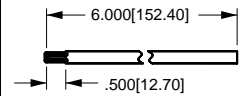
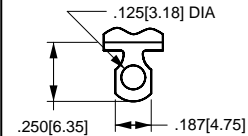
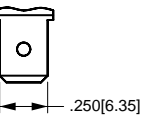
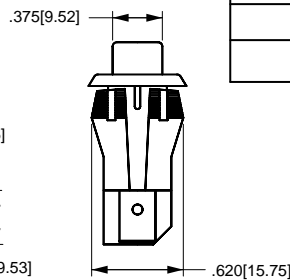
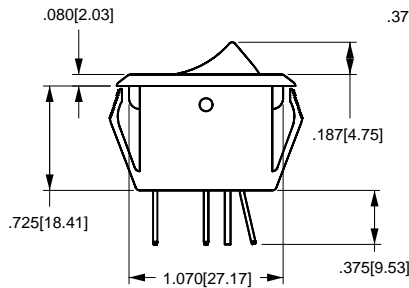
The LR-Series Curvette single pole illuminated miniature snap-in rocker switches are available with a rocker or paddle actuator. These lighted switches are available in a number of lamp voltages with internationally approved current ratings up to 16 amps. Due to the patented mounting ear design, these switches are compatible with a wide range of standard panel cutouts.

Specifications

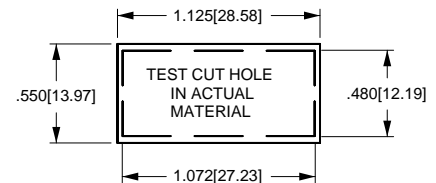
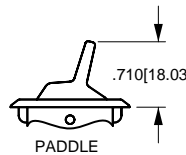
- Certifications*: UL, CSA, VDE, SEMKO, DEMKO, NEMKO, FIMKO, SEV and BEAB
- Dielectric Strength: 1,000V (minimum)
- Insulation Resistance: 100 Megohms (minimum)
- Base Material: Nylon
- Actuator Material: Translucent Nylon or Polycarbonate

* Due to ongoing technological advances, consult factory for certification specifics.

Dimensional Specifications: in. [mm]



.250 TAB (Q.C.)	SOLDER LUG	WIRE LEAD
TERMINAL TYPE		



MOUNTING HOLE
Panel Thickness: .025 min. - .187 max.
Specific cutout dimension range dependent on panel thickness and material.
Consult factory.

LR	A	21	1	- R	S	- B	/	125N
SERIES	RATING¹	RATING¹	ACTUATOR STYLE²	ACTUATOR STYLE²	ACTUATOR COLOR	BASE COLOR⁴	LAMP VOLTAGE	LAMP VOLTAGE
LR SINGLE POLE	21 10A 250 VAC 16 A 125VAC 10(4)A 125VAC _μ	51 LOW VOLTAGE FOR 6, 12, 18 & 24 VOLT LAMPS	C CLEAR ROCKER ³ P PADDLE R ROCKER	A APRICOT (amber) C COCONUT (white) P PINEAPPLE (pale yellow) S STRAWBERRY (red) W WATERMELON (pale red)	B BLACK W WHITE	006V 6 VOLTS/ INCANDESCENT 012V 12 VOLTS/ INCANDESCENT 018V 18 VOLTS/ INCANDESCENT 024V 24 VOLTS/ INCANDESCENT 125N 125 VOLTS/ NEON ⁵ 250N 250 VOLTS/ NEON ⁵		
CIRCUIT	A OFF-NONE-ON	81 10A 250VAC 16A 125VAC 6(4)A 250VAC _μ 50E3 T85	ACTUATOR COLOR					
		91 10A 250VAC 16A 125VAC 10(4)A 250VAC _μ T85	TERMINATION					
		0 SOLDER LUG 1 .250TAB (QC) 5 WIRE LEAD						
				CLEAR ROCKER A AMBER C CLEAR G GREEN B BLUE R RED				

NOTES:

Shading indicates standard configurations.

Panel Cut-Out Recommendations: For sheet metal panels, switch must enter panel in same direction as the punch. (Burr on bottom.) Test cut hole in actual material.

1 Rating Code 21 available with 125 Volt neon lamp only. Additional ratings are available. Consult factory.

2 Imprinting is available. Consult factory.

3 Clear rocker = T55 and is available with rating 21 and 91.

4 Custom colors available. Consult factory.

5 Neon lamps (125 volt or 250 volt) not recommended with green or blue colored actuators.