

**ONE HOLE HYLUG™
CODE CONDUCTOR STANDARD BARREL**

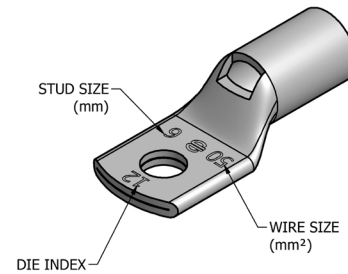
TYPE YAV-M

Rated for 90° C, Up to 35 kV ♦

Made from electrolytic copper tube and is electro tin plate. Wire range is from 2.5 mm² to 630 mm² Class 2. Compatible to **IEC61238-1**.

NOTE: Field bending straight lugs to achieve an angular connection will void UL Listing / CSA Certifications and BURNDY will not be liable for the connection.

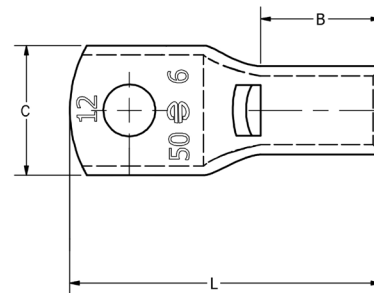
Electro-Tin
Plated



C-111

Features & Benefits

- Inspection window allows for visual verification that the wire has been fully inserted prior to crimping the lug
- Barrel is designed with an internal chamfer at the wire entry to ensure smooth insertion of the wire, preventing possible damaging of the wire strands during insertion
- Short/Standard length barrel is recommended for installations with limited space requirements
- Electro-tin plated unless otherwise specified to reduce galvanic corrosion (bimetallic) and resist corrosive elements
- Compatible Standards: IEC61238-1, UL 486A-486B, CSA-C22.2 No. 65-03
- Connectors are clearly marked with stamping



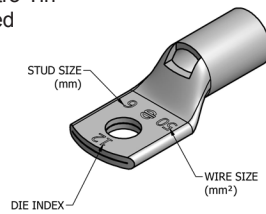
Compression Connections

BURNDY®

Metric Lugs — Copper Compression — Code — Standard Barrel

ONE HOLE HYLUG™ CODE CONDUCTOR STANDARD BARREL

Electro-Tin
Plated



NOTE: Field bending straight lugs to achieve an angular connection will void UL Listing / CSA Certifications and BURNDY will not be liable for the connection.

C-112

TYPE YAV-M

Rated for 90° C, Up to 35 kV ◆

(Continued)

Catalog Number	Copper		Stud Size	Dimensions (mm)				Dieless	Installation Tooling			Die Index	Wire Strip Length	
	Wire Range mm² (AWG)	Class		(B)	(C)	(L)	Tongue Thickness		Mechanical	Hydraulic				
YAV025M3	1.5 - 2.5 (20 - 14)	2, 5	M3	6.7	7.9	19.1	1.0	Y10D (1), Y10-22 (1), MR8G98 (1), MR8-9Q (1), Y8MRB-1 (1), MR20 (1)	—	—	—	—	7	
YAV025M4			M4	6.7	7.9	19.1	1.0							
YAV025M5			M5	6.7	7.9	19.1	1.0							
YAV025M6			M6	6.7	10.7	24.2	0.8							
YAV025M8			M8	6.7	11.0	24.2	0.8							
YAV06M35	4 - 6 (12 - 10)	2, 5	M3.5	10.5	7.6	23.7	1.8		Y1MRTC (1), MY29-11 (1), MRC840 (1), Y / PAT81KFT (1)	—	—	—	—	11
YAV06M4			M4	10.4	9.5	23.9	1.5							
YAV06M5			M5	10.4	9.5	23.9	1.5							
YAV06M6			M6	10.4	11.9	26.9	1.3							
YAV06M8			M8	10.4	13.5	28.7	1.0							
YAV06M10	M10	9.5	14.2	31.0	1.0									
YAV10M4	10 (8)	2, 5	M4	11.2	10.4	29.1	2.0	Y1MRTC (1), MY29-11 (1), MRC840 (1), Y / PAT81KFT (1)		W8CVT (1) W8CRT (1) X8CRT (1)	W8CVT (1) W8CRT (1) X8CRT (1)	U8CRT (1)	49	11
YAV10M5			M5	11.2	10.4	28.5	1.8							
YAV10M6			M6	11.2	1.0	31.0	1.8							
YAV10M8			M8	11.2	13.2	33.0	1.5							
YAV10M10			M10	11.2	14.5	33.0	1.3							
YAV10M12	M12	11.2	18.5	38.6	1.3									
YAV16M4	16 (6)	2, 5	M4	12.7	12.2	31.5	2.3		Y1MRTC (1), MY29-11 (1), MRC840 (1), Y / PAT644 (1), Y / PAT81KFT (1)	W5CVT (1) W5CRT (1) X5CRT (1)	W5CVT (1) W5CRT (1) X5CRT (1)	U5CRT (1)	7	13
YAV16M5			M5	12.7	12.2	33.0	2.0							
YAV16M6			M6	12.7	12.2	33.0	2.0							
YAV16M8			M8	12.7	15.2	36.3	1.5							
YAV16M10			M10	12.7	14.7	40.9	1.5							
YAV16M12	M12	12.7	18.8	41.6	1.3									
YAV25M5	25 (4)	2, 5	M5	12.7	14.0	33.5	2.3	Y1MRTC (2), MY29-11 (1), MRC840 (1), Y / PAT644 (1), Y / PAT81KFT (1)		W3CRT (1)	W3CRT (1)	U3CRT (1)	9	13
YAV25M6			M6	12.7	12.7	34.5	2.0							
YAV25M8			M8	12.7	16.0	37.6	2.0							
YAV25M10			M10	12.7	14.7	41.4	2.0							
YAV25M12			M12	12.7	18.5	42.7	1.5							
YAV35M5	35 (2)	2, 5	M5	16.0	17.3	38.1	2.5		MY29-11 (1) MRC840 (2), Y / PAT644 (1), Y / PAT81KFT (1)	W2CVT (1) W2CRT (1) X2CRT (1)	W2CVT (1) W2CRT (1) X2CRT (1)	U2CRT (1)	10	17
YAV35M6			M6	11.7	17.3	43.7	2.5							
YAV35M8			M8	11.7	17.3	43.7	2.5							
YAV35M10			M10	11.7	17.3	45.9	2.5							
YAV35M12			M12	11.7	19.6	47.5	2.3							
YAV35M16	M16	11.7	21.1	58.7	3.0									
YAV50M5	50 (2)	2	M5	16.0	17.3	38.1	2.5	MY29-11 (1) MRC840 (2), Y / PAT644 (1), Y / PAT81KFT (1)		W25VT (2) W25RT (2) X25RT (2)	W25VT (2) W25RT (2) X25RT (2)	U25RT (1)	12	17
YAV50M6			M6	16.0	17.3	38.1	2.5							
YAV50M8			M8	16.0	17.3	42.9	2.5							
YAV50M10			M10	16.0	17.3	45.9	2.5							
YAV50M12			M12	16.0	18.5	52.3	2.5							
YAV50M14	M14	16.0	21.1	53.3	3.0									
YAV50M16	M16	16.0	25.9	58.7	3.6									

* Use equivalent AWG setting on tool for installation

** PUADP-1 Adaptor is required to use "U" Dies in Y46 and PAT46 series tools

† P-RT Die sets for use in Y46 only, PUADP-1 Adaptor not required

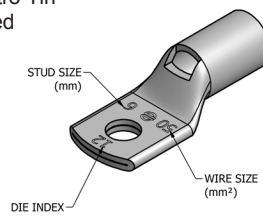
**ONE HOLE HYLUG™
CODE CONDUCTOR
STANDARD BARREL**

TYPE YAV-M

Rated for 90° C, Up to 35 kV ♦

(Continued)

Electro-Tin
Plated



NOTE: Field bending straight lugs to achieve an angular connection will void UL Listing / CSA Certifications and BURNDY will not be liable for the connection.

Catalog Number	Copper		Stud Size	Dimensions (mm)				Installation Tooling				Wire Strip Length	
	Wire Range mm² (AWG)	Class		(B)	(C)	(L)	Tongue Thickness	Dieless	Mechanical		Hydraulic		Die Index
									MD6, OUR840, MD7-34R	BCT500, Y500CT	Y35, Y39, Y/PAT750, Y/PAT46**		
YAV70M5	70 (1/0)	2	M5	17.5	21.1	41.4	3.0	MY29-11 (1) MRC840 (2), Y / PAT644 (1), Y / PAT81KFT (1)	W26VT (2) W26RT (2) X26RT (2)	W26VT (2) W26RT (2) X26RT (2)	U26RT (1)	13	19
YAV70M6			M6	17.5	21.1	44.5	3.0						
YAV70M8			M8	17.5	21.1	46.0	3.0						
YAV70M10			M10	17.5	21.1	49.3	3.0						
YAV70M12			M12	17.5	21.1	55.6	3.0						
YAV70M14			M14	17.5	22.4	56.6	2.8						
YAV70M16	M16	17.5	22.4	62.0	2.8								
YAV95M6	95 (2/0)	2	M6	20.6	23.6	45.8	3.3	MY29-11 (1), MRC840 (2), Y / PAT644 (1), Y / PAT81KFT (2)	W27VT (2) W27RT (2) X27RT (3)	W27VT (2) W27RT (2) X27RT (3)	U27RT (1)	14	22
YAV95M8			M8	20.6	23.6	50.3	3.3						
YAV95M10			M10	20.6	23.6	53.6	3.3						
YAV95M12			M12	20.6	23.6	59.9	3.3						
YAV95M14			M14	20.6	23.6	61.0	3.3						
YAV95M16			M16	20.6	23.6	66.3	3.3						
YAV95M20	M20	20.6	30.5	77.4	4.1								
YAV120M6	120 (4/0)	2	M6	26.2	29.0	53.6	3.8	MY29-11 (1), MRC840 (2), Y / PAT644 (1), Y / PAT81KFT (2)	W28VT (2) W28RT (2) X28RT (2)	W28VT (2) W28RT (2) X28RT (2)	U28RT (1)	15	27
YAV120M8			M8	26.2	29.0	58.2	3.8						
YAV120M10			M10	26.2	29.0	61.5	3.8						
YAV120M12			M12	26.2	29.0	67.8	3.8						
YAV120M14			M14	26.2	29.0	68.8	3.8						
YAV120M16			M16	26.2	29.0	74.2	3.8						
YAV120M20	M20	26.2	29.0	85.2	3.8								
YAV150M8	150 (300)	2	M8	26.2	30.5	58.7	4.1	MY29-11 (1), MRC840 (2), Y / PAT644 (1), Y / PAT81KFT (2)	W30VT (2)	W30VT (2) W30RT (2)	U30RT (2)	17	27
YAV150M10			M10	26.2	30.5	62.0	4.1						
YAV150M12			M12	26.2	30.5	68.3	4.1						
YAV150M14			M14	26.2	30.5	69.2	4.1						
YAV150M16			M16	26.2	30.5	74.7	4.1						
YAV150M20			M20	26.2	30.5	85.7	4.1						
YAV185M8	185 (350)	2	M8	26.9	32.8	60.2	4.6	Y / PAT644 (1), Y / PAT81KFT (2)	W31VT (2)	W31VT (2) W31RT (2)	U31RT (2)	18	29
YAV185M10			M10	26.9	32.8	63.5	4.3						
YAV185M12			M12	26.9	32.8	69.9	4.3						
YAV185M14			M14	26.9	32.8	70.8	4.6						
YAV185M16			M16	26.9	32.8	76.2	4.6						
YAV185M20			M20	26.9	32.8	87.3	4.6						
YAV240M10	240 (500)	2	M10	32.3	39.4	72.9	5.8	Y / PAT644 (1), Y / PAT81KFT (2)	W34VT (2)	W34VT (2) W34RT (2)	U34RT (2)	20	33
YAV240M12			M12	32.3	39.4	80.2	5.6						
YAV240M14			M14	32.3	39.4	81.3	5.8						
YAV240M16			M16	32.3	39.4	85.6	5.8						
YAV240M20			M20	32.3	39.4	96.6	5.8						
YAV300M10			300 (600)	2	M10	35.1	44.2						
YAV300M12	M12	35.1			44.2	83.6	6.6						
YAV300M14	M14	35.1			44.2	84.6	6.9						
YAV300M16	M16	35.1			44.2	89.9	6.9						
YAV300M20	M20	35.1			44.2	100.9	6.9						

* Use equivalent AWG setting on tool for installation

** PUADP-1 Adaptor is required to use "U" Dies in Y46 and PAT46 series tools

† P-RT Die sets for use in Y46 only, PUADP-1 Adaptor not required

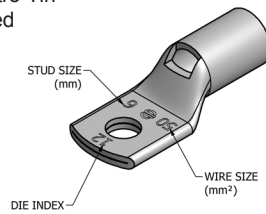
Compression Connections

BURNDY®

Metric Lugs — Copper Compression — Code — Standard Barrel

ONE HOLE HYLUG™ CODE CONDUCTOR STANDARD BARREL

Electro-Tin
Plated



NOTE: Field bending straight lugs to achieve an angular connection will void UL Listing / CSA Certifications and BURNDY will not be liable for the connection.

C-114

TYPE YAV-M

Rated for 90° C, Up to 35 kV ◆

(Continued)

Catalog Number	Copper		Stud Size	Dimensions (mm)				Installation Tooling				Wire Strip Length	
	Wire Range mm ² (AWG)	Class		(B)	(C)	(L)	Tongue Thickness	Dieless	Mechanical		Hydraulic		Die Index
									MD6, OUR840, MD7-34R	BCT500, Y500CT	Y35, Y39, Y/PAT750, Y/PAT46**		
YAV400M12	400 (800)	2	M12	36.1	50.3	87.1	7.6	Y / PAT644 (1), Y / PAT81KFT (3)	—	—	U39RT (3)	24	37
YAV400M14			M14	36.1	50.3	88.1	7.6						
YAV400M16			M16	36.1	50.3	93.5	7.6						
YAV400M20			M20	36.1	50.3	104.5	7.6						
YAV500M12	500 (1000)	2	M12	41.9	55.6	96.2	8.1	—	—	U44XRT (3) •P44XRT (3)	L115	43	
YAV500M16			M16	41.9	55.6	102.6	8.4						
YAV500M20			M20	41.9	55.6	113.7	8.4						
YAV630M12	630 (1250)	2	M12	50.8	62.5	107.7	9.7	—	—	P45RT (3)	29	55	
YAV630M16			M16	50.8	62.5	114.0	9.7						
YAV630M20			M20	50.8	62.5	125.2	9.7						

* Use equivalent AWG setting on tool for installation

** PUADP-1 Adaptor is required to use "U" Dies in Y46 and PAT46 series tools

• P-RT dies for Y / PAT46 Tooling only