

Certain electrical and control systems require protection by fuses. The terminal has a hinged carrier that has a specially designed space for a cartridge type glass fuse of size Ø5 x 20 or Ø5 x 25 mm. The fuse can be engaged or disengaged by the movement of the carrier.

Altech fuse terminals are also available with light indication - CF4U(L). A specially designed built-in circuit gives light indication in the event of fuse blow out. No polarity is required.

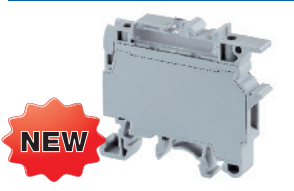
† Fuses are sold separately Altech, see pages 100-101

* Add required voltage to part number as a suffix. i.e. CF4U(L)/6-60 for 6-60 V AC/DC.



CF4U†

CF4U(L)†*



No Polarity Required.

Terminal Width	8 mm
Height x Length	57.6 x 57 mm
Stripping Length	9.5 mm
Insulation Material	Polyamide 6.6
Type of Connection	4 screw clamps
LED Voltage	6-60 V AC/DC 90-240 V AC/DC
Type of Fuse Used	Ø5x20, Ø5x25 mm
Approvals	UL US, IEC 60947-7-3, C E220514
Wire Range	22-10 AWG
Voltage Rating	600 V
Current Rating	10 A
Torque	7 lb-in
Other Approvals	RoHS, CE

Terminal Width	8 mm
Height x Length	57.6 x 57 mm
Stripping Length	9.5 mm
Insulation Material	Polyamide 6.6
Type of Connection	4 screw clamps
LED Voltage	CF4U(L)/6-60 CF4U(L)/90-240
Type of Fuse Used	Ø5x20, Ø5x25 mm
Approvals	UL US, IEC 60947-7-3, C E220514
Wire Range	22-10 AWG
Voltage Rating	600 V
Current Rating	10 A
Torque	7 lb-in
Other Approvals	RoHS, CE

Terminal Width	8 mm
Height x Length	57.6 x 57 mm
Stripping Length	9.5 mm
Insulation Material	Polyamide 6.6
Type of Connection	4 screw clamps
LED Voltage	CF4U(L)/6-60 CF4U(L)/90-240
Type of Fuse Used	Ø5x20, Ø5x25 mm
Approvals	UL US, IEC 60947-7-3, C E220514
Wire Range	22-10 AWG
Voltage Rating	600 V
Current Rating	10 A
Torque	7 lb-in
Other Approvals	RoHS, CE

Terminal Block

DIN Rail for ordering information refer to pages 90-91

End Stop for ordering information refer to page 92

Internal Jumper	2 pole	
	3 pole	
	4 pole	
	10 pole	

Insulated Internal Jumper	2 pole	
	3 pole	
	4 pole	
	10 pole	

Current Bar	2 pole	
	3 pole	
	4 pole	
	10 pole	

Shorting Sleeve & Screw

External Jumper	2 pole	
	3 pole	
	4 pole	
	10 pole	

Marking Tags (on terminal)

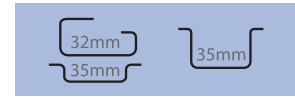
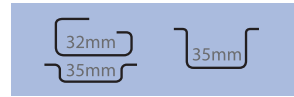
Marking Tags (on Lever)

Cat. No.	Std. Pk.
----------	----------

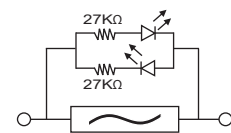
CF4U	100
CA702	50
CA802	50

Cat. No.	Std. Pk.
----------	----------

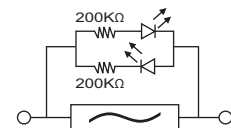
CF4U(L)*	50
CA702	50
CA802	50



CF4U(L) Only



LED Circuit for offline indication in CF4U(L)/6-60V



LED Circuit for offline indication in CF4U(L)/90-240V

CA711/2	100
CA711/3	50
CA711/4	50
CA711/10	20

CA711/2	100
CA711/3	50
CA711/4	50
CA711/10	20

MT8	100
MT8	100

MT8	100
MT8	100

COLOR BLOCKS
(other than standard grey)

When ordering please add color suffix to Cat. No.
Example for color Red: **Cat.No./R**

Color	Ordering Suffix	
Red	R	
Yellow	Y	
Blue	BU	
Green	G	
Orange	O	
Beige	BG	
Dark Brown	DB	
Black	BL	
White	W	

Consult Altech for availability.