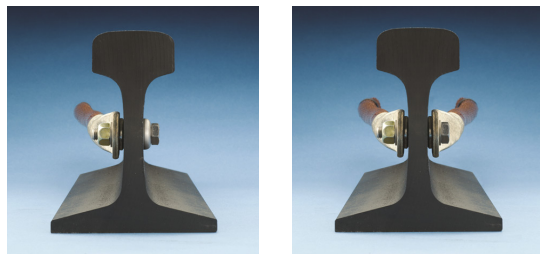
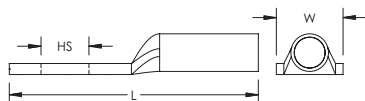


Compression Straight Lug – RKS24012H (716544)



- Tin plated for corrosion prevention
- Annealed copper eases the crimping operation
- Optimized sizes to the most efficient electrical conductivity
- Best mechanical behavior (vibration/pull-out); DIN EN 61373 Class 1B "Railway Applications"
- Markings on barrel for crimping
- Consistent material thickness, precise diameter and accurate cable fit; DIN46235



Part Number	RKS24012H
Article Number	716544
Material	Copper
Finish	Tinned
Lug/Connector Type	Standard
Conductor Size	240 mm ² Stranded 500 kcmil Stranded
Hole Size (HS)	0.51"
Length (L)	3.3"
Width (W)	1 1/2"
Tool/Die Type	M2M or M2H/RKM2 M3H or M3B/RKM3 MLB/RKML
Standard Packaging Quantity	10 pc
UPC	78285658809
EAN-13	8711893041484

WARNING

nVent products shall be installed and used only as indicated in nVent's product instruction sheets and training materials. Instruction sheets are available at www.erico.com and from your nVent customer service representative. Improper installation, misuse, misapplication or other failure to completely follow nVent's instructions and warnings may cause product malfunction, property damage, serious bodily injury and death and/or void your warranty.

© 2021 nVent All rights reserved

nVent, nVent CADDY, nVent ERICO, nVent ERIFLEX and nVent LENTON are owned by nVent or its global affiliates.

All other trademarks are the property of their respective owners. nVent reserves the right to change specifications without prior notice.