

## PRECISION FLAT STOCK AND DRILL ROD



Cut costs and save time - make your own parts like these from Flat Stock

### PRECISION GROUND FLAT STOCK AND DRILL ROD STANDARD AND OVERSIZE

Starrett Precision Ground Flat Stock and Drill Rod can save time in your shop ... no more time hunting lost stock ... no more slow, costly grinding to size. Just lay it out and saw it out and save valuable machinery, downtime and man hours.

- Machine parts
- Shims
- Flat gages
- Fixtures
- Stamps
- Punches
- Parallels
- Templates
- Cutters
- Dies
- Jigs
- Buttons
- Test gages
- Test tools

**Six types of material** in a complete range of sizes is available to meet your specific needs:

**495 and 496** are (AISI O1) oil hardening tool steels. These steels are dimensionally stable and can be used for all intricate work, including work with thin sections, with a minimum danger of cracking.

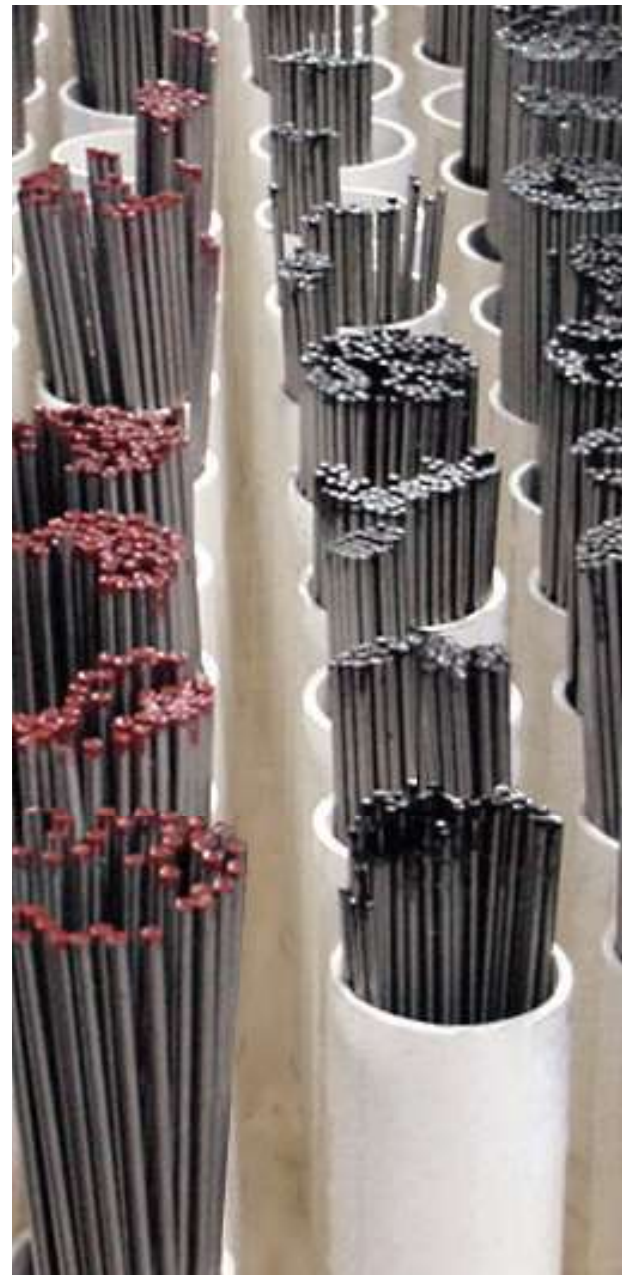
**497 and 499** are (AISI A2) 5% chromium air-hardening steel. These steels have high wear and abrasion resistance.

**498** Low carbon steel is used where deep hardening is not necessary, although it can be carburized or case hardened.

**344** is (AISI A6) a medium alloyed air hardening tool steel that provides an excellent balance of machinability, toughness and wear resistance.

**W1 Carbon** (Available only in Drill Rod) is (AISI/SAE W1) a versatile and less expensive carbon steel with excellent machinability, good wear resistance and toughness.

**401 and 402** are (AISI D2) high chromium steel. These steels are for the highest wear resistance applications.



### PACKAGING

Starrett Precision Ground Flat Stock is individually wrapped in brown paper and clearly marked with size dimensions, analysis and correct hardening and tempering information. Drill rods are bundled together and tagged with a description that includes the size and EDP number. Color coding by grade on the ends of each piece allows for easy identification.





Cut costs and save time - make your own parts like these from Drill Rod

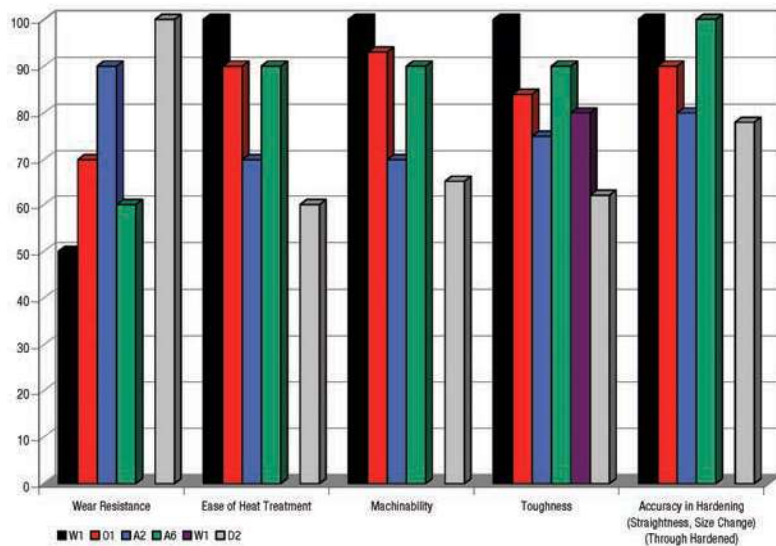
**Flat Stock Tolerances**

<b>Standard:</b>	Thickness $\pm .001$ " Widths Up through 8", $+.000/.005$ " 9" and Over, $+.000/.015$ " Squares, $\pm .001$ "
<b>Oversize:</b>	Thickness, $+.010/.015$ " Width, $+.010/.015$ " Squares, $+.010/.015$ "
<b>Length:</b>	18", $+1/4$ " Saw Cut Oversize to Allow for Finish Cutting 24", $+1/2$ " 36", $+5/8$ "
<b>Squareness Edge All:</b>	.003" Per Inch
<b>Finish:</b>	35 Microinch or Finer

**Drill Rod Tolerances**

Size Range	Diameter Tolerance	Length Tolerance
.124" round and less	$\pm .0003$ "	
.125" to .499"	$\pm .0005$ "	$+1/8$ " - 0
.500" to 2"	$\pm .0010$ "	

**COMPARATIVE FEATURE PROPERTIES**



# PRECISION GROUND FLAT STOCK

## 496 OIL HARDENING PRECISION GROUND FLAT STOCK

### STANDARD

## 495 OIL HARDENING PRECISION GROUND FLAT STOCK

### OVERSIZE

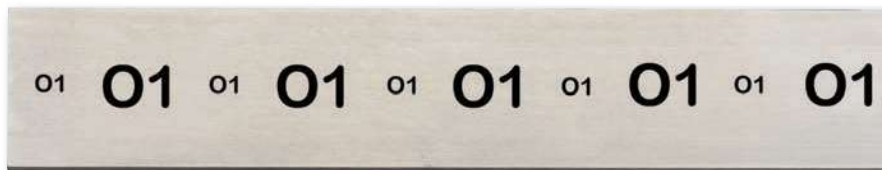
- Stock is dimensionally stable – use it for the most intricate work
- Deep hardening characteristics and fine grain structure
- Machines freely – fully spheroidized, annealed
- Full length identification – eliminates confusion with other steels
- Starrett uses its own ground flat stock and die stock for many of its fine precision tool parts

### SPECIFICATIONS

#### NOMINAL ANALYSIS (AISI O1)

Carbon .....	.90
Chromium .....	.50
Manganese .....	1.20
Tungsten .....	.50
Vanadium .....	.20

Size	Temperature	Quench	Rockwell C
All Sizes	1450°-1500° F	Oil	63-65



Furnished in 18" and 36" lengths, ground straight and parallel.

#### HARDENING

It is recommended that stock be heated uniformly to 1450°-1500° F and quenched in oil. Temperature of the quenching oil should be 120°-140° F for best results. Do not quench in water because this is an oil hardening steel.

#### TEMPERING

For maximum toughness, a tempering time of one hour at temperature is recommended. Use chart for selecting desired Rockwell C hardness and corresponding tempering temperature. The following may also be used as a guide depending on type of work.

#### CUTTING TOOLS

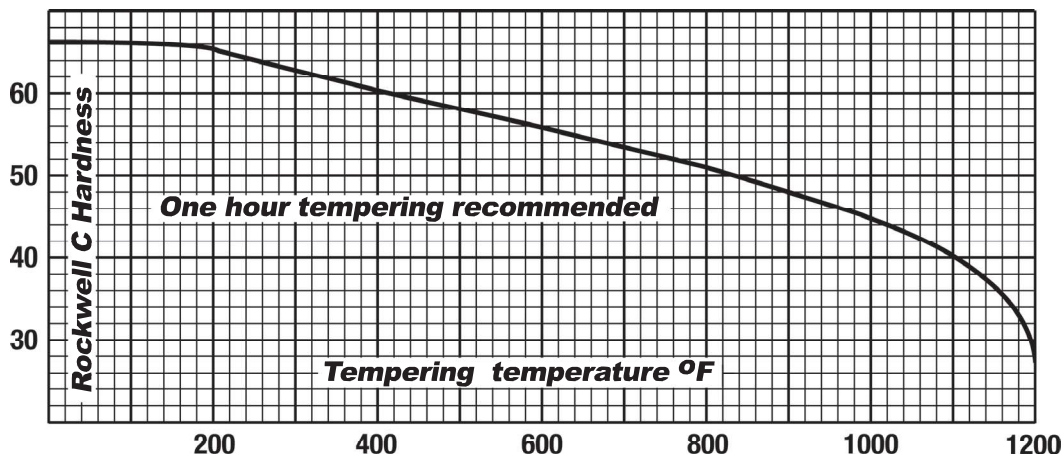
- 300°-350° F (Light Straw)

#### SOLID PUNCHES AND DIES

- 400°-450° F (Straw)

#### SPRING TEMPER

- 750°-800° F (Blue)



NOTE: Lengths, widths and thicknesses other than listed can also be quoted by request



# PRECISION GROUND FLAT STOCK

## 496 OIL HARDENING PRECISION GROUND FLAT STOCK

### STANDARD TOLERANCE

496 Oil Hardening Precision Ground Flat Stock			
Thickness	Width	18" Length	36" Length
1/64"	1/2"	53924	59139
	3/4"	53925	
	1"	53926	
	1-1/4"	53927	
	1-1/2"	53928	
	2"	53929	59140
	2-1/2"	53930	
	3"	53931	
4"	53932	59141	
1/32"	1/2"	53933	58895
	3/4"	53934	59143
	1"	53935	59144
	1-1/4"	53936	
	1-1/2"	53937	59145
	2"	53938	58901
	2-1/2"	53939	
	3"	53940	59147
4"	53941	59148	
6"	53942		
3/64"	1/2"	53943	59149
	3/4"	53944	59150
	1"	53945	58902
	1-1/4"	53946	59171
	1-1/2"	53947	57685
	2"	53948	59152
	2-1/2"	53949	
	3"	53950	
3-1/2"	53951		
4"	53952	59153	
6"	53953		
1/16"	1/4"	57226	58891
	3/8"	57227	
	1/2"	53954	54257
	3/4"	53955	54258
	1"	53956	54259
	1-1/4"	53957	54260
	1-1/2"	53958	54261
	1-3/4"	53959	54262
	2"	53960	54263
	2-1/2"	53961	54264
	3"	53962	54265
	3-1/2"	53963	54266
	4"	53964	54267
	5"	53965	54268
6"	53966	54269	
8"	53967	57236	
10"	53968	57237	
5/64"	1/2"	53969	54270
	3/4"	53970	58905
	1"	53971	58890
	1-1/2"	53972	
	2"	53973	
	2-1/2"	53974	
	3"	53975	
	4"	53976	
6"	53977		

496 Oil Hardening Precision Ground Flat Stock			
Thickness	Width	18" Length	36" Length
3/32"	1/4"		58899
	3/8"	58903	
	1/2"	53978	54279
	3/4"	53979	54280
	1"	53980	54281
	1-1/4"	53981	54282
	1-1/2"	53982	54283
	2"	53983	54284
	2-1/2"	53984	54285
	3"	53985	54286
	4"	53986	54287
	5"	53987	54288
6"	53988	54289	
8"	53989	57682	
7/64"	1/2"	53990	
	3/4"	53991	
	1"	53992	
	1-1/4"	53993	
	1-1/2"	53994	
	2"	53995	
	3"	53996	
	4"	53997	
1/8"	1/8"	53998	59154
	1/4"	57228	58894
	5/16"	59127	58897
	3/8"	57229	58892
	1/2"	53999	54298
	5/8"	54000	54299
	3/4"	54001	54300
	1"	54002	54301
	1-1/4"	54003	54302
	1-1/2"	54004	54303
	1-3/4"	54005	54304
	2"	54006	54305
	2-1/2"	54007	54306
	3"	54008	54307
3-1/2"	54009	54308	
4"	54010	54309	
4-1/2"	54011	54310	
5"	54012	54311	
6"	54013	54312	
7"	54014	54313	
8"	54015	54314	
10"	54016	54315	
12"	54017	54316	
14"	54018	57238	
9/64"	9/64"	54019	
	1/2"	54020	
	3/4"	54021	
	1"	54022	
	1-1/2"	54023	
	2"	54024	
	3"	54025	
	4"	54026	
5/32"	5/32"	54027	
	1/2"	54028	54324
	3/4"	54029	54325
	1"	54030	54326
	1-1/4"	54031	54327
	1-1/2"	54032	54328

496 Oil Hardening Precision Ground Flat Stock			
Thickness	Width	18" Length	36" Length
5/32"	1-3/4"	54033	54329
	2"	54034	54330
	2-1/2"	54035	54331
	3"	54036	54332
	3-1/2"	54037	54333
	4"	54038	54334
	5"	54039	54335
	6"	54040	54336
8"	54041	54337	
3/16"	3/16"	54042	59157
	1/4"	57230	
	3/8"	57231	
	1/2"	54043	54338
	3/4"	54044	54339
	1"	54045	54340
	1-1/4"	54046	54341
	1-1/2"	54047	54342
1-3/4"	54048	54343	
2"	54049	54344	
2-1/2"	54050	54345	
3"	54051	54346	
3-1/2"	54052	54347	
4"	54053	54348	
5"	54054	54349	
6"	54055	54350	
8"	54056	54351	
10"	54057	54352	
7/32"	7/32"	54058	
	1/2"	54059	54353
	3/4"	54060	54354
	1"	54061	54355
	1-1/4"	54062	54356
	1-1/2"	54063	54357
	2"	54064	54358
	3"	54065	54359
4"	54066	54360	
6"	54067		
1/4"	1/4"	54068	56517
	3/8"	54069	58900
	1/2"	54070	54362
	5/8"	58904	58893
	3/4"	54071	54363
	1"	54072	54364
	1-1/4"	54073	54365
	1-1/2"	54074	54366
	1-3/4"	54075	54367
	2"	54076	54368
	2-1/2"	54077	54369
	3"	54078	54370
	3-1/2"	54079	54371
	4"	54080	54372
4-1/2"	54081	54373	
5"	54082	54374	
5-1/2"	54083	54375	
6"	54084	54376	
7"	54085	54377	
8"	54086	54378	
10"	54087	54379	
12"	54088	54380	
14"	54089	57239	

FLAT STOCK AND DRILL ROD

Sizes other than listed priced on application



Check out our website for interactive features at [starrett.com](http://starrett.com)



# PRECISION GROUND FLAT STOCK

## 496 OIL HARDENING PRECISION GROUND FLAT STOCK

### STANDARD TOLERANCE

FLAT STOCK AND DRILL ROD

496 Oil Hardening Precision Ground Flat Stock			
Thickness	Width	18" Length	36" Length
9/32"	9/32"	54090	
	1/2"	54091	
	3/4"	54092	
	1"	54093	
	1-1/4"	54094	
	1-1/2"	54095	
	2"	54096	
	2-1/2"	54097	
	3"	54098	
4"	54099		
6"	54100	54390	
5/16"	5/16"	54101	54391
	3/8"	57232	
	1/2"	54102	54392
	5/8"		58896
	3/4"	54103	54393
	1"	54104	54394
	1-1/4"	54105	54395
	1-1/2"	54106	54396
	1-3/4"	57233	57240
	2"	54107	54397
	2-1/2"	54108	54398
	3"	54109	54399
	3-1/2"	54110	54400
	4"	54111	54401
4-1/2"	54112	54402	
5"	54113	54403	
6"	54114	54404	
8"	54115	54405	
3/8"	3/8"	54116	54406
	1/2"	54117	54407
	5/8"		58898
	3/4"	54118	54408
	1"	54119	54409
	1-1/4"	54120	54410
	1-1/2"	54121	54411
	1-3/4"	54122	54412
	2"	54123	54413
	2-1/2"	54124	54414
	3"	54125	54415
	3-1/2"	54126	54416
	4"	54127	54417
	4-1/2"	54128	54418
	5"	54129	54419
	5-1/2"	54130	54420
	6"	54131	54421
	7"	54132	54422
8"	54133	54423	
10"	54134	54424	
12"	54135	54425	
7/16"	7/16"	54136	54426
	1/2"	54137	54427
	3/4"	54138	54428
	1"	54139	54429
	1-1/4"	54140	54430
	1-1/2"	54141	54431
	2"	54142	54432
	2-1/2"	54143	54433
	3"	54144	54434
	4"	54145	54435
	6"	54146	54436

496 Oil Hardening Precision Ground Flat Stock			
Thickness	Width	18" Length	36" Length
1/2"	1/2"	54147	54437
	5/8"	54148	54438
	3/4"	54149	54439
	1"	54150	54440
	1-1/4"	54151	54441
	1-1/2"	54152	54442
	1-3/4"	57234	57241
	2"	54153	54443
	2-1/2"	54154	54444
	3"	54155	54445
	3-1/2"	54156	54446
	4"	54157	54447
	4-1/2"	54158	54448
	5"	54159	54449
6"	54160	54450	
7"	54161	54451	
8"	54162	54452	
10"	54163	54453	
12"	54164	59159	
14"	54165		
9/16"	9/16"	54166	54455
	3/4"	54167	54456
	1"	54168	54457
	1-1/4"	54169	54458
	1-1/2"	54170	54459
	2"	54171	54460
5/8"	5/8"	54172	54461
	3/4"	54173	54462
	1"	54174	54463
	1-1/4"	54175	54464
	1-1/2"	54176	54465
	2"	54177	54466
	2-1/2"	54178	54467
	3"	54179	54468
	3-1/2"	54180	54469
	4"	54181	54470
	5"	54182	54471
	6"	54183	54472
8"	54185	54474	
10"	54186	54475	
12"	57235	57242	
3/4"	3/4"	54187	54476
	1"	54188	54477
	1-1/4"	54189	54478
	1-1/2"	54190	54479
	2"	54191	54480
	2-1/2"	54192	54481
	3"	54193	54482
	3-1/2"	54194	54483
	4"	54195	54484
	4-1/2"	54196	54485
	5"	54197	54486
	6"	54198	54487
	8"	54199	54488
	10"	54200	54489
12"	54201	54490	

496 Oil Hardening Precision Ground Flat Stock			
Thickness	Width	18" Length	36" Length
7/8"	7/8"	54202	54491
	1"	54203	54492
	1-1/4"	54204	54493
	1-1/2"	54205	54494
	2"	54206	54495
	2-1/2"	54207	54496
	3"	54208	54497
1"	4"	54209	54498
	6"	54210	54499
	1"	54211	54500
	1-1/4"	54212	54501
	1-1/2"	54213	54502
	2"	54214	54503
	2-1/2"	54215	54504
	3"	54216	54505
	3-1/2"	54217	54506
	4"	54218	54507
1-1/8"	4-1/2"	54219	54508
	5"	54220	54509
	6"	54221	54510
	8"	54222	54511
	10"	54223	54512
	12"	54224	54513
	1-1/2"	54225	54514
2"	54226	54515	
1-1/4"	3"	54227	54516
	4"	54228	54517
	6"	54229	54518
	1-1/4"	54230	54519
	1-1/2"	54231	54520
	2"	54232	54521
1-1/2"	2-1/2"	54233	54522
	3"	54234	54523
	4"	54235	54524
	5"	54236	54525
	6"	54237	54526
	8"	54238	54527
	10"	54239	54528
	1-1/2"	54240	54529
	2"	54241	54530
	2-1/2"	54242	54531
3"	54243	54532	
2"	3-1/2"	54244	54533
	4"	54245	54534
	5"	54246	54535
	6"	54247	54536
	8"	54248	54537
	10"	54249	54538
	12"	59189	
	2"	54250	54539
3"	54251	54540	
2"	4"	54252	54541
	6"	54253	54542

Sizes other than listed priced on application



# PRECISION GROUND FLAT STOCK

## 495 OIL HARDENING PRECISION GROUND FLAT STOCK

### OVERSIZE TOLERANCE

495 Oil Hardening Ground Flat Stock			
Thickness	Width	18" Length	36" Length
3/16"	3/16"	56957	57677
	1/2"	56958	56813
	3/4"	56959	56814
	1"	56960	56815
	1-1/4"	56961	56816
	1-1/2"	56962	56817
	2"	56963	56818
	2-1/2"	56964	56819
	3"	56965	56820
	4"	56966	56821
1/4"	1/4"	56971	57678
	1/2"	56972	56823
	3/4"	56973	56824
	1"	56974	56825
	1-1/4"	56975	56826
	1-1/2"	56976	56827
	1-3/4"	56977	
	2"	56978	56828
	2-1/2"	56979	56829
	3"	56980	56830
5/16"	5/16"	56987	
	1/2"	56988	56835
	3/4"	56989	56836
	1"	56990	56837
	1-1/4"	56991	56838
	1-1/2"	56992	56839
	2"	56993	56840
	2-1/2"	56994	56841
	3"	56995	56842
	4"	56996	56843
3/8"	3/8"	56998	57679
	1/2"	56999	56846
	3/4"	57000	56847
	1"	57001	56848
	1-1/4"	57002	56849
	1-1/2"	57003	56850
	2"	57004	56851
	2-1/2"	57005	56852
	3"	57006	56853
	3-1/2"	57007	
1/2"	4"	57008	56854
	4-1/2"	57009	
	5"	57010	56855
	6"	57011	56856
	8"	57012	56857
	12"	57013	
	1/2"	57014	56858
	3/4"	57015	56859
	1"	57016	56860
	1-1/4"	57017	56861
5/8"	1-1/2"	57018	56862
	2"	57019	56863
	2-1/2"	57020	56864
	3"	57021	56865
	3-1/2"	57022	
	4"	57023	56866
	4-1/2"	57024	
	5"	57025	56867
	6"	57026	56868
	8"	57027	56869
3/4"	10"	57028	56870
	12"	57029	
	5/8"	57030	56871
	3/4"	57031	57680
	1"	57032	56872
	1-1/4"	57033	56873
	1-1/2"	57034	56874
	2"	57035	56875
	2-1/2"	57036	56876
	3"	57037	56877
1"	3-1/2"	57038	
	4"	57039	56878
	5"	57040	56879
	6"	57041	56880
	3/4"	57042	56881
	1"	57043	56882
	1-1/4"	57044	
	1-1/2"	57045	56883
	2"	57046	56884
	2-1/2"	57047	56885
3/4"	3"	57048	56886
	3-1/2"	57049	
	4"	57050	56887
	5"	57051	
	6"	57052	56888
	8"	57053	
	1"	57054	56889
	1-1/4"	57055	57681
	1-1/2"	57056	56890
	2"	57057	56891
2-1/2"	57058	56892	
1"	3"	57059	56893
	3-1/2"	57060	
	4"	57061	56894
	5"	57062	
	6"	57063	56895

495 Oil Hardening Ground Flat Stock			
Thickness	Width	18" Length	36" Length
3/8"	3/8"	56998	57679
	1/2"	56999	56846
	3/4"	57000	56847
	1"	57001	56848
	1-1/4"	57002	56849
	1-1/2"	57003	56850
	2"	57004	56851
	2-1/2"	57005	56852
	3"	57006	56853
	3-1/2"	57007	
1/2"	4"	57008	56854
	4-1/2"	57009	
	5"	57010	56855
	6"	57011	56856
	8"	57012	56857
	12"	57013	
	1/2"	57014	56858
	3/4"	57015	56859
	1"	57016	56860
	1-1/4"	57017	56861
5/8"	1-1/2"	57018	56862
	2"	57019	56863
	2-1/2"	57020	56864
	3"	57021	56865
	3-1/2"	57022	
	4"	57023	56866
	4-1/2"	57024	
	5"	57025	56867
	6"	57026	56868
	8"	57027	56869
3/4"	10"	57028	56870
	12"	57029	
	5/8"	57030	56871
	3/4"	57031	57680
	1"	57032	56872
	1-1/4"	57033	56873
	1-1/2"	57034	56874
	2"	57035	56875
	2-1/2"	57036	56876
	3"	57037	56877
1"	3-1/2"	57038	
	4"	57039	56878
	5"	57040	56879
	6"	57041	56880
	3/4"	57042	56881
	1"	57043	56882
	1-1/4"	57044	
	1-1/2"	57045	56883
	2"	57046	56884
	2-1/2"	57047	56885
3/4"	3"	57048	56886
	3-1/2"	57049	
	4"	57050	56887
	5"	57051	
	6"	57052	56888
	8"	57053	
	1"	57054	56889
	1-1/4"	57055	57681
	1-1/2"	57056	56890
	2"	57057	56891
2-1/2"	57058	56892	
1"	3"	57059	56893
	3-1/2"	57060	
	4"	57061	56894
	5"	57062	
	6"	57063	56895

495 Oil Hardening Ground Flat Stock			
Thickness	Width	18" Length	36" Length
3/4"	3/4"	57042	56881
	1"	57043	56882
	1-1/4"	57044	
	1-1/2"	57045	56883
	2"	57046	56884
	2-1/2"	57047	56885
	3"	57048	56886
	3-1/2"	57049	
	4"	57050	56887
	5"	57051	
1"	6"	57052	56888
	8"	57053	
	1"	57054	56889
	1-1/4"	57055	57681
	1-1/2"	57056	56890
	2"	57057	56891
	2-1/2"	57058	56892
	3"	57059	56893
	3-1/2"	57060	
	4"	57061	56894
1"	5"	57062	
	6"	57063	56895

FLAT STOCK AND DRILL ROD

Sizes other than listed priced on application



Check out our website for interactive features at [starrett.com](http://starrett.com)



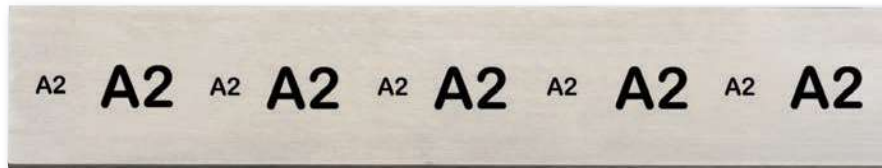
# PRECISION GROUND FLAT STOCK

**497 AIR HARDENING PRECISION GROUND FLAT STOCK STANDARD**

**499 AIR HARDENING PRECISION GROUND FLAT STOCK OVERSIZE**

**DIMENSIONALLY STABLE**

- The 5% chromium content makes this steel especially desirable for punches and dies to be used in long production runs since it gives the tools far longer life. Up to 50% more pieces per sharpening can be produced than with oil hardening steel.
- High wear resistance is also ideal for punches and dies to stamp silicon, stainless steels, monel metal and other types of abrasive material
- Maintains close dimensional accuracy throughout the heat treating process. The wide 75° hardening range make this virtually foolproof.
- Full-length identification eliminates confusion with other steels
- Starrett uses its own ground flat stock for many of its precision tool parts



**SPECIFICATIONS**

Furnished in 18" and 36" lengths, ground straight and parallel.

**HARDENING**

497 and 499 Air Hardening Ground Flat Stock have a wide hardening range of 1700°F to 1775°F, with 1750°F recommended for most work. For heavier sections use the high side of the range. Heat uniformly throughout but do not soak longer than necessary. Cool in still air. No pre-heat is required if pack or atmosphere controlled furnace methods are used, but with the open furnace method a pre-heat of 1450°F is recommended.

**TEMPERING**

A tempering time of two hours at temperature is recommended. Use chart for selecting the desired Rockwell C hardness and corresponding tempering temperature. For maximum toughness, double temper for two hours at each temperature recommended. The following may also be used as a guide, depending on the type of work.

**LIGHT BLANKING PUNCHES AND DIES**

400°-425° F

**HEAVY BLANKING PUNCHES AND DIES**

700° F

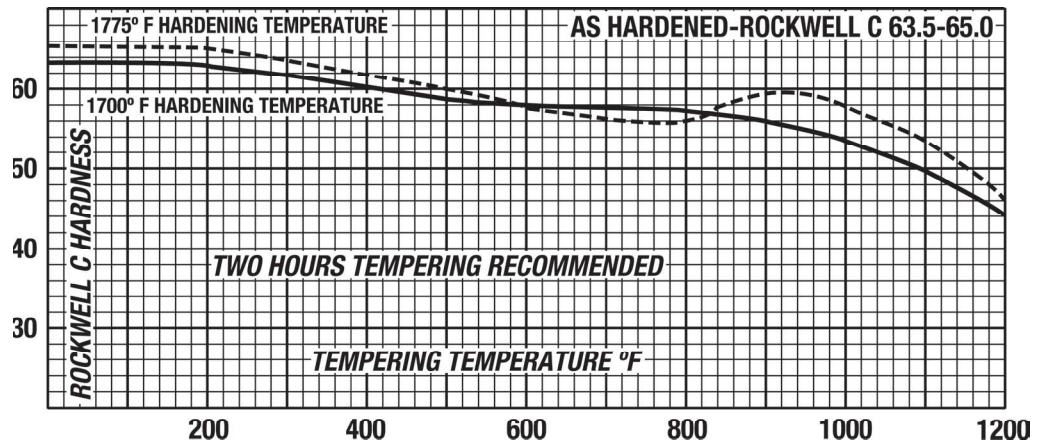
**ANNEALING**

1525°-1575° F. Furnace cool at no more than 50° per hour to 800° for maximum softness.

Size	Temperature	Cool	Rockwell C
All Sizes	1700°-1775° F	Still Air	63.5-65

**NOMINAL ANALYSIS (AISI A2)**

Carbon .....	1.00
Chromium .....	5.25
Manganese .....	.60
Molybdenum .....	1.00
Vanadium .....	.25



499, 1-1/4" and over is Blanchard ground with saw cut edges



# PRECISION GROUND FLAT STOCK

## 497 AIR HARDENING PRECISION GROUND FLAT STOCK

### STANDARD TOLERANCE

497 Air Hardening Precision Ground Flat Stock			
Thickness	Width	18" Length	36" Length
1/16"	1/2"	57489	57301
	3/4"	57490	57302
	1"	57491	57303
	1-1/4"	57492	57304
	1-1/2"	57493	57305
	2"	57494	57306
	2-1/2"	57495	57307
	3"	57496	57308
3/32"	1/2"	57497	57309
	1/2"	57498	57310
	3/4"	57499	57311
	1"	57500	57312
	1-1/4"	57501	57313
	1-1/2"	57502	57314
	2"	57503	57315
	2-1/2"	57504	57316
1/8"	3"	57505	57317
	4"	57506	57318
	1/2"	57243	57245
	5/8"	57507	57319
	3/4"	57244	57246
	1"	54589	54546
	1-1/4"	54590	54547
	1-1/2"	54591	54548
	1-3/4"	57508	57320
	2"	54592	54549
	2-1/2"	54593	54550
	3"	54594	54551
	3-1/2"	54595	54552
	4"	54596	54553
	5"	54598	54555
	6"	54599	54556
7"	57509	57321	
8"	57510	57322	
10"	57511	57323	
12"	57512	57324	
5/32"	1/2"	57513	57325
	3/4"	57514	57326
	1"	54600	54557
	1-1/4"	54601	54558
	1-1/2"	54602	54559
	1-3/4"	57515	57327
	2"	54603	54560
	2-1/2"	54604	54561
	3"	54605	54562
	3-1/2"	54606	54563
	4"	54607	54564
	5"	54608	54565
	6"	54609	54566
	8"	57516	57328

497 Air Hardening Precision Ground Flat Stock			
Thickness	Width	18" Length	36" Length
3/16"	3/16"	57517	57329
	1/2"	57518	57330
	3/4"	57519	57331
	1"	54610	54567
	1-1/4"	54611	54568
	1-1/2"	54612	54569
	1-3/4"	57520	57332
	2"	54613	54570
	2-1/2"	54614	54571
	3"	54615	54572
	3-1/2"	54616	54573
	4"	54617	54574
1/4"	5"	54618	54575
	6"	54619	54576
	7"	57521	57333
	8"	57522	57334
	12"	59129	59161
	1/4"	57523	57335
	1/2"	57524	57336
	3/4"	57525	57337
	1"	54620	54577
	1-1/4"	54621	54578
	1-1/2"	54622	54579
	1-3/4"	57526	57338
2"	54623	54580	
2-1/2"	54624	54581	
3"	54625	54582	
3-1/2"	54626	54583	
4"	54627	54584	
5"	54629	54586	
6"	54631	54588	
8"	59130	59162	
12"	59131	59163	
5/16"	5/16"	57527	57339
	1/2"	57528	57340
	3/4"	57529	57341
	1"	54717	54632
	1-1/4"	54718	54633
	1-1/2"	54719	54634
	1-3/4"	57530	57342
	2"	54720	54635
	2-1/2"	54721	54636
	3"	54722	54637
	3-1/2"	54723	54638
	4"	54724	54639
5"	54726	54641	
6"	54727	54642	
8"	59132	59164	

497 Air Hardening Precision Ground Flat Stock			
Thickness	Width	18" Length	36" Length
3/8"	3/8"	57531	57343
	1/2"	57532	57344
	3/4"	57533	57345
	1"	54728	54643
	1-1/4"	54729	54644
	1-1/2"	54730	54645
	1-3/4"	57534	57346
	2"	54731	54646
	2-1/2"	54732	54647
	3"	54733	54648
	3-1/2"	54734	54649
	4"	54735	54650
1/2"	5"	54737	54652
	6"	54739	54654
	8"	59133	59165
	12"	59134	59166
	1/2"	56495	56505
	5/8"	57535	57347
	3/4"	56494	56506
	1"	56493	56507
	1-1/4"	57536	57348
	1-1/2"	57537	57349
	1-3/4"	57538	57350
	2"	54748	54663
2-1/2"	54749	54664	
3"	54750	54665	
3-1/2"	54751	54666	
4"	54752	54667	
5"	54754	54669	
6"	54755	54670	
8"	54757	54672	
12"	59135	59167	
5/8"	5/8"	56499	56508
	3/4"	56498	56509
	1"	56497	56510
	1-1/2"	56496	56511
	2"	54760	54675
	2-1/2"	54761	54676
	3"	54762	54677
	3-1/2"	54763	54678
4"	54764	54679	
5"	54765	54680	
6"	54766	54681	
8"	59136	59168	

FLAT STOCK AND DRILL ROD

Sizes other than listed priced on application



Check out our website for interactive features at [starrett.com](http://starrett.com)



# PRECISION GROUND FLAT STOCK

## 497 AIR HARDENING PRECISION GROUND FLAT STOCK

### STANDARD TOLERANCE

497 Air Hardening Precision Ground Flat Stock			
Thickness	Width	18" Length	36" Length
3/4"	3/4"	54770	54685
	1"	56501	56512
	1-1/4"	57539	57351
	1-1/2"	56500	56513
	2"	54771	54686
	2-1/2"	54772	54687
	3"	54773	54688
	4"	54775	54690
7/8"	5"	54777	54692
	6"	54778	54693
	7/8"	54781	54696
	1"	56503	56514
	1-1/2"	56502	56515
	2"	54782	54697
	2-1/2"		54698
	3"	54784	54699
4"	54785	54700	
	54786	54701	

497 Air Hardening Precision Ground Flat Stock			
Thickness	Width	18" Length	36" Length
1"	1"	54787	54702
	1-1/4"	57540	57352
	1-1/2"	56504	56516
	2"	54788	54703
	2-1/2"	54789	54704
	3"	54790	54705
	4"	54792	54707
	5"	54794	54709
1-1/4"	6"	54795	54710
	1-1/4"	54834	57684
	1-1/2"	57683	57686
	2"	54835	57687
	2-1/2"	54836	57688
	3"	54837	57689
	4"	54838	57690
	5"	54839	57691
6"	54840	57692	

497 Air Hardening Precision Ground Flat Stock			
Thickness	Width	18" Length	36" Length
1-1/2"	1-1/2"	54843	57693
	2"	54844	57694
	2-1/2"	54845	57695
	3"	54846	57696
	3-1/2"	54847	57697
2"	4"	54848	57698
	6"	54850	57699
	2"	54853	57700
	2-1/2"	54854	57701
	3"	54855	57702
4"	54857	57703	

Sizes other than listed priced on application

## 499 AIR HARDENING GROUND FLAT STOCK

### OVERSIZE TOLERANCE

499 Air Hardening Ground Flat Stock			
Thickness	Width	18" Length	36" Length
1/8"	1/2"	57541	57353
	5/8"	57542	57354
	3/4"	57543	57355
	1"	57544	57356
	1-1/4"	57545	57357
	1-1/2"	57546	57358
	1-3/4"	57547	57359
	2"	57548	57360
	2-1/2"	57549	57361
	3"	57550	57362
	3-1/2"	57551	57363
	4"	57552	57364
	5"	57553	57365
	6"	57554	57366
	7"	57555	57367
	8"	57556	57368
10"	57557	57369	
12"	57558	57370	

499 Air Hardening Ground Flat Stock			
Thickness	Width	18" Length	36" Length
5/32"	1/2"	57559	57371
	3/4"	57560	57372
	1"	57561	57373
	1-1/4"	57562	57374
	1-1/2"	57563	57375
	2"	57564	57376
	2-1/2"	57565	57377
	3"	57566	57378
	4"	57567	57379
	5"	57568	57380
3/16"	6"	57569	57381
	8"	57570	57382
	3/16"	57571	57383
	1/2"	57572	57384
	3/4"	57573	57385
	1"	57162	56896
	1-1/4"	57163	56897
	1-1/2"	57164	56898
	1-3/4"	57574	57386
	2"	57165	56899
	2-1/2"	57166	56900
	3"	57167	56901

499 Air Hardening Ground Flat Stock			
Thickness	Width	18" Length	36" Length
3/16"	3-1/2"	57575	57387
	4"	57168	56902
	5"	57576	57388
	6"	57577	57389
	8"	57578	57390
	10"	57579	57391
1/4"	1/4"	57580	57392
	3/8"		58906
	1/2"	57581	57393
	3/4"	57582	57394
	1"	57169	56903
	1-1/4"	57170	56904
	1-1/2"	57171	56905
	1-3/4"	57583	57395
	2"	57172	56906
	2-1/2"	57173	56907
	3"	57174	56908
3-1/2"	57584	57396	
4"	57175	56909	
5"	57176	56910	
6"	57177	56911	
7"	57585	57397	

499, 1-1/4" and over is Blanchard ground with saw cut edges  
 Sizes other than listed priced on application



# PRECISION GROUND FLAT STOCK

## 499 AIR HARDENING GROUND FLAT STOCK

### OVERSIZE TOLERANCE

499 Air Hardening Ground Flat Stock				499 Air Hardening Ground Flat Stock				499 Air Hardening Ground Flat Stock			
Thickness	Width	18" Length	36" Length	Thickness	Width	18" Length	36" Length	Thickness	Width	18" Length	36" Length
1/4"	8"	57586	57398	1/2"	2-1/2"	57199	56933	7/8"	7/8"	57635	57447
	10"	57587	57399		3"	57200	56934		1"	57636	57448
	12"	57588	57400		3-1/2"	57201	56935		1-1/4"	57637	57449
5/16"	5/16"	57589	57401		4"	57202	56936		1-1/2"	57638	57450
	1/2"	57590	57402		4-1/2"	57610	57422		2"	57639	57451
	3/4"	57591	57403		5"	57203	56937		2-1/2"	57640	57452
	1"	57178	56912		6"	57204	56938	3"	57641	57453	
	1-1/4"	57179	56913		7"	57611	57423	3-1/2"	57642	57454	
	1-1/2"	57180	56914		8"	57612	57424	4"	57643	57455	
	1-3/4"	57592	57404		10"	57613	57425	5"	57644	57456	
	2"	57181	56915		12"	57614	57426	6"	57645	57457	
	2-1/2"	57593	57405		9/16"	2"	57615	57427	1"	1"	57219
	3"	57182	56916	2-1/2"		57616	57428	1-1/4"		57646	57458
3-1/2"	57594	57406	3"	57617		57429	1-1/2"	57220		56954	
4"	57183	56917	4"	57618	57430	1-3/4"	57647	57459			
5"	57184	56918	5/8"	5/8"	57205	56939	2"	57221		56955	
6"	57595	57407		3/4"	57206	56940	2-1/2"	57648		57460	
8"	57596	57408		1"	57207	56941	3"	57222		56956	
3/8"	3/8"	57597		57409	1-1/4"	57619	57431	3-1/2"		57649	57461
	1/2"	57598		57410	1-1/2"	57208	56942	4"		57650	57462
	3/4"	57599		57411	2"	57209	56943	4-1/2"		57651	57463
	1"	57185		56919	2-1/2"	57210	56944	5"		57652	57464
	1-1/4"	57186		56920	3"	57211	56945	6"		57653	57465
	1-1/2"	57187		56921	3-1/2"	57212	56946	8"	57654	57466	
	1-3/4"	57600		57412	4"	57620	57432	12"	57655	57467	
	2"	57188	56922	5"	57621	57433	1-1/4"	1-1/4"	57656	57468	
	2-1/2"	57189	56923	6"	57622	57434		1-1/2"	57657	57469	
	3"	57190	56924	8"	57623	57435		2"	57658	57470	
	3-1/2"	57191	56925	10"	57624	57436		2-1/2"	57659	57471	
	4"	57192	56926	3/4"	3/4"	57213		56947	3"	57660	57472
	4-1/2"	57601	57413		1"	57214		56948	4"	57661	57473
	5"	57193	56927		1-1/4"	57625	57437	5"	57662	57474	
6"	57194	56928	1-1/2"		57215	56949	6"	57663	57475		
7"	57602	57414	1-3/4"		57626	57438	1-1/2"	1-1/2"	57664	57476	
8"	57603	57415	2"		57216	56950		2"	57665	57477	
10"	57604	57416	2-1/2"		57627	57439		2-1/2"	57666	57478	
12"	57605	57417	3"		57217	56951		3"	57667	57479	
1/2"	1/2"	57195	56929		3-1/2"	57628		57440	3-1/2"	57668	57480
	5/8"	57606	57418		4"	57218		56952	4"	57669	57481
	3/4"	57196	56930	4-1/2"	57629	57441	6"	57670	57482		
	1"	57197	56931	5"	57630	57442	8"	59137	59169		
	1-1/4"	57607	57419	6"	57631	57443	12"	59138	59170		
	1-1/2"	57608	57420	8"	57632	57444	2"	2"	57671	57483	
	1-3/4"	57609	57421	10"	57633	57445		2-1/2"	57672	57484	
	2"	57198	56932	12"	57634	57446		3"	57673	57485	
								4"	57674	57486	

FLAT STOCK AND DRILL ROD

499, 1-1/4" and over is Blanchard ground with saw cut edges  
 Sizes other than listed priced on application



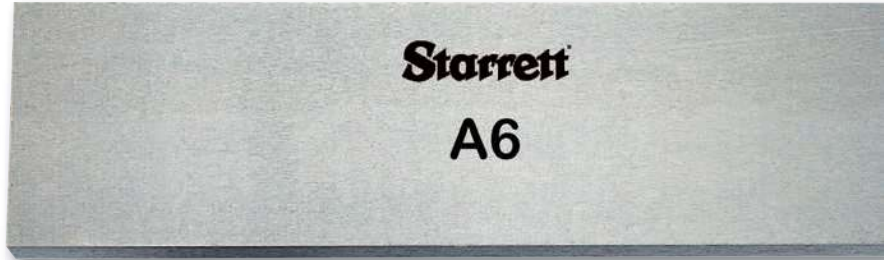
Check out our website for interactive features at [starrett.com](http://starrett.com)



## PRECISION GROUND FLAT STOCK

### 344 A6 AIR HARDENING PRECISION GROUND FLAT STOCK

A6 is a medium alloyed air hardening tool steel that provides an excellent balance of machinability, toughness and wear resistance. Its lower heat treating temperature, which is similar to that of oil hardening steel, results in deep hardness and minimum distortion.



#### SPECIFICATIONS

Furnished in 36" lengths, ground straight and parallel. Heat Treatment and Tempering Data available upon request

#### NOMINAL ANALYSIS (AISI A6)

Carbon .....	.70
Chromium .....	1.00
Manganese .....	2.00
Molybdenum .....	1.25
Vanadium .....	-
Tungsten .....	-

### 344 AIR HARDENING PRECISION GROUND FLAT STOCK

344 Air Hardening Precision Ground Flat Stock		
Thickness	Width	36" Length
1/16"	1/4"	58907
	5/16"	58908
	3/8"	58909
	1/2"	58910
	5/8"	58911
	3/4"	58912
	7/8"	58913
	1"	58914
	1-1/4"	58915
	1-1/2"	58916
	1-3/4"	58917
	2"	58918
	2-1/2"	58919
	3"	58920
	3-1/2"	58921
	4"	58922
5"	58923	
6"	58924	

344 Air Hardening Precision Ground Flat Stock		
Thickness	Width	36" Length
3/32"	1/4"	58925
	5/16"	58926
	3/8"	58927
	1/2"	58928
	5/8"	58929
	3/4"	58930
	7/8"	58931
	1"	58932
	1-1/4"	58933
	1-1/2"	58934
	1-3/4"	58935
	2"	58936
	2-1/2"	58937
	3"	58938
	3-1/2"	58939
	4"	58940
5"	58941	
6"	58942	

344 Air Hardening Precision Ground Flat Stock		
Thickness	Width	36" Length
1/8"	1/4"	58943
	5/16"	58944
	3/8"	58945
	1/2"	58946
	5/8"	58947
	3/4"	58948
	7/8"	58949
	1"	58950
	1-1/4"	58951
	1-1/2"	58952
	1-3/4"	58953
	2"	58954
	2-1/2"	58955
	3"	58956
	3-1/2"	58957
	4"	58958
5"	58959	
6"	58960	
7"	58961	
8"	58962	
10"	58963	
12"	58964	

Sizes other than listed priced on application



# PRECISION GROUND FLAT STOCK

## 344 AIR HARDENING PRECISION GROUND FLAT STOCK

344 Air Hardening Precision Ground Flat Stock		
Thickness	Width	36" Length
3/16"	3/16"	58965
	1/4"	58966
	5/16"	58967
	3/8"	58968
	1/2"	58969
	5/8"	58970
	3/4"	58971
	7/8"	58972
	1"	58973
	1-1/4"	58974
	1-1/2"	58975
	1-3/4"	58976
	2"	58977
	2-1/2"	58978
	3"	58979
	3-1/2"	58980
1/4"	4"	58981
	5"	58982
	6"	58983
	7"	58984
	8"	58985
	10"	58986
	12"	58987
	1/4"	58988
	5/16"	58989
	3/8"	58990
	1/2"	58991
	5/8"	58992
3/4"	58993	
7/8"	58994	
1"	58995	
1-1/4"	58996	
1-1/2"	58997	
1-3/4"	58998	
2"	58999	
2-1/2"	59000	
3"	59001	
3-1/2"	59002	
4"	59003	
5"	59004	
6"	59005	
7"	59006	
8"	59007	
10"	59008	
12"	59009	
5/16"	5/16"	59010
	3/8"	59011
	1/2"	59012
	5/8"	59013
	3/4"	59014
	7/8"	59015
	1"	59016
	1-1/4"	59017
1-1/2"	59018	
1-3/4"	59019	

344 Air Hardening Precision Ground Flat Stock		
Thickness	Width	36" Length
5/16"	2"	59020
	2-1/2"	59021
	3"	59022
	3-1/2"	59023
	4"	59024
	4-1/2"	59025
	5"	59026
	5-1/2"	59027
	6"	59028
	8"	59029
	10"	59030
	12"	59031
3/8"	3/8"	59032
	1/2"	59033
	5/8"	59034
	3/4"	59035
	7/8"	59036
	1"	59037
	1-1/4"	59038
	1-1/2"	59039
	1-3/4"	59040
	2"	59041
	2-1/2"	59042
	3"	59043
3-1/2"	59044	
4"	59045	
4-1/2"	59046	
5"	59047	
6"	59048	
7"	59049	
8"	59050	
10"	59051	
12"	59052	
1/2"	1/2"	59053
	5/8"	59054
	3/4"	59055
	7/8"	59056
	1"	59057
	1-1/4"	59058
	1-1/2"	59059
	1-3/4"	59060
	2"	59061
	2-1/2"	59062
	3"	59063
	3-1/2"	59064
4"	59065	
4-1/2"	59066	
5"	59067	
5-1/2"	59068	
6"	59069	
7"	59070	
8"	59071	
10"	59072	
12"	59073	

344 Air Hardening Precision Ground Flat Stock		
Thickness	Width	36" Length
5/8"	5/8"	59074
	3/4"	59075
	7/8"	59076
	1"	59077
	1-1/4"	59078
	1-1/2"	59079
	1-3/4"	59080
	2"	59081
	2-1/2"	59082
	3"	59083
3/4"	3-1/2"	59084
	4"	59085
	4-1/2"	59086
	5"	59087
	5-1/2"	59088
	6"	59089
	7"	59090
	8"	59091
	10"	59092
	3/4"	3/4"
7/8"		59094
1"		59095
1-1/4"		59096
1-1/2"		59097
1-3/4"		59098
2"		59099
2-1/2"		59100
3"		59101
3-1/2"		59102
1"	4"	59103
	4-1/2"	59104
	5"	59105
	5-1/2"	59106
	6"	59107
	7"	59108
	8"	59109
	10"	59110
	1"	59111
	1-1/4"	59112
1-1/2"	59113	
1-3/4"	59114	
2"	59115	
2-1/2"	59116	
3"	59117	
3-1/2"	59118	
4"	59119	
4-1/2"	59120	
5"	59121	
5-1/2"	59122	
6"	59123	
7"	59124	
8"	59125	
10"	59126	

FLAT STOCK AND DRILL ROD

Sizes other than listed priced on application



Check out our website for interactive features at [starrett.com](http://starrett.com)



## PRECISION GROUND FLAT STOCK

### 401 AND 402 HIGH CARBON, HIGH CHROMIUM PRECISION GROUND FLAT STOCK

- High carbon, high chromium steel
- For applications that demand the highest wear resistance
- 401 is standard tolerance
- 402 is oversize tolerance



#### SPECIFICATIONS

Furnished in 18" and 36" lengths, ground straight and parallel.

### 401 HIGH CARBON, HIGH CHROMIUM PRECISION GROUND FLAT STOCK

#### STANDARD TOLERANCE

401 High Carbon, High Chromium Precision Ground Flat Stock				401 High Carbon, High Chromium Precision Ground Flat Stock				401 High Carbon, High Chromium Precision Ground Flat Stock			
Thickness	Width	18" Length	36" Length	Thickness	Width	18" Length	36" Length	Thickness	Width	18" Length	36" Length
1/16"	1/2"	69097	69232	3/16"	1/2"	69141	69276	1/2"	3/4"	69185	69320
	3/4"	69098	69233		3/4"	69142	69277		1"	69186	69321
	1"	69099	69234		1"	69143	69278		1-1/4"	69187	69322
	1-1/4"	69100	69235		1-1/4"	69144	69279		1-1/2"	69188	69323
	1-1/2"	69101	69236		1-1/2"	69145	69280		2"	69189	69324
	2"	69102	69237		2"	69146	69281		2-1/2"	69190	69325
	2-1/2"	69103	69238		2-1/2"	69147	69282		3"	69191	69326
	3"	69104	69239		3"	69148	69283		4"	69192	69327
	4"	69105	69240		4"	69149	69284		5"	69193	69328
3/32"	5"	69106	69241	5"	69150	69285	6"	69194	69329		
	6"	69107	69242	6"	69151	69286	5/8"	69195	69330		
	1/2"	69108	69243	1/4"	1/2"	69152	69287	3/4"	69196	69331	
	3/4"	69109	69244		3/4"	69153	69288	1"	69197	69332	
	1"	69110	69245		1"	69154	69289	1-1/4"	69198	69333	
	1-1/4"	69111	69246		1-1/4"	69155	69290	1-1/2"	69199	69334	
	1-1/2"	69112	69247		1-1/2"	69156	69291	2"	69200	69335	
	2"	69113	69248		2"	69157	69292	2-1/2"	69201	69336	
	2-1/2"	69114	69249		2-1/2"	69158	69293	3"	69202	69337	
3"	69115	69250	3"		69159	69294	4"	69203	69338		
4"	69116	69251	4"		69160	69295	5"	69204	69339		
1/8"	5"	69117	69252	5"	69161	69296	6"	69205	69340		
	6"	69118	69253	6"	69162	69297	3/4"	69206	69341		
	1/2"	69119	69254	5/16"	1/2"	69163	69298	1"	69207	69342	
	3/4"	69120	69255		3/4"	69164	69299	1-1/4"	69208	69343	
	1"	69121	69256		1"	69165	69300	1-1/2"	69209	69344	
	1-1/4"	69122	69257		1-1/4"	69166	69301	2"	69210	69345	
	1-1/2"	69123	69258		1-1/2"	69167	69302	2-1/2"	69211	69346	
	2"	69124	69259		2"	69168	69303	3"	69212	69347	
	2-1/2"	69125	69260		2-1/2"	69169	69304	4"	69213	69348	
3"	69126	69261	3"		69170	69305	5"	69214	69349		
4"	69127	69262	4"		69171	69306	6"	69215	69350		
5/32"	5"	69128	69263	5"	69172	69307	7/8"	69216	69351		
	6"	69129	69264	6"	69173	69308	1"	69217	69352		
	1/2"	69130	69265	3/8"	1/2"	69174	69309	2"	69218	69353	
	3/4"	69131	69266		3/4"	69175	69310	3"	69219	69354	
	1"	69132	69267		1"	69176	69311	4"	69220	69355	
	1-1/4"	69133	69268		1-1/4"	69177	69312	5"	69221	69356	
	1-1/2"	69134	69269		1-1/2"	69178	69313	6"	69222	69357	
	2"	69135	69270		2"	69179	69314	1"	69223	69358	
	2-1/2"	69136	69271		2-1/2"	69180	69315	1-1/4"	69224	69359	
3"	69137	69272	3"		69181	69316	1-1/2"	69225	69360		
4"	69138	69273	4"		69182	69317	2"	69226	69361		
5/16"	5"	69139	69274	5"	69183	69318	2-1/2"	69227	69362		
	6"	69140	69275	6"	69184	69319	3"	69228	69363		
	1/2"	69130	69265	7/8"	1/2"	69174	69309	4"	69229	69364	
	3/4"	69131	69266		3/4"	69175	69310	5"	69230	69365	
	1"	69132	69267		1"	69176	69311	6"	69231	69366	
	1-1/4"	69133	69268		1-1/4"	69177	69312				
1-1/2"	69134	69269	1-1/2"		69178	69313					
2"	69135	69270	2"		69179	69314					

Sizes other than listed priced on application

# PRECISION GROUND FLAT STOCK

## 402 HIGH CARBON, HIGH CHROMIUM GROUND FLAT STOCK

### OVERSIZE TOLERANCE

402 High Carbon, High Chromium Ground Flat Stock			
Thickness	Width	18" Length	36" Length
1/8"	1/2"	69367	69481
	3/4"	69368	69482
	1"	69369	69483
	1-1/4"	69370	69484
	1-1/2"	69371	69485
	2"	69372	69486
	2-1/2"	69373	69487
	3"	69374	69488
	4"	69375	69489
5"	69376	69490	
6"	69377	69491	
5/32"	1/2"	69378	69492
	3/4"	69379	69493
	1"	69380	69494
	1-1/4"	69381	69495
	1-1/2"	69382	69496
	2"	69383	69497
	2-1/2"	69384	69498
	3"	69385	69499
	4"	69386	69500
5"	69387	69501	
6"	69388	69502	
3/16"	1/2"	69389	69503
	3/4"	69390	69504
	1"	69391	69505
	1-1/4"	69392	69506
	1-1/2"	69393	69507
	2"	69394	69508
	2-1/2"	69395	69509
	3"	69396	69510
	4"	69397	69511
5"	69398	69512	
6"	69399	69513	
1/4"	1/2"	69400	69514
	3/4"	69401	69515
	1"	69402	69516
	1-1/4"	69403	69517
	1-1/2"	69404	69518
	2"	69405	69519
	2-1/2"	69406	69520
	3"	69407	69521
	4"	69408	69522
5"	69409	69523	
6"	69410	69524	

402 High Carbon, High Chromium Ground Flat Stock			
Thickness	Width	18" Length	36" Length
5/16"	1/2"	69411	69525
	3/4"	69412	69526
	1"	69413	69527
	1-1/4"	69414	69528
	1-1/2"	69415	69529
	2"	69416	69530
	2-1/2"	69417	69531
	3"	69418	69532
	4"	69419	69533
5"	69420	69534	
6"	69421	69535	
3/8"	1/2"	69422	69536
	3/4"	69423	69537
	1"	69424	69538
	1-1/4"	69425	69539
	1-1/2"	69426	69540
	2"	69427	69541
	2-1/2"	69428	69542
	3"	69429	69543
	4"	69430	69544
5"	69431	69545	
6"	69432	69546	
1/2"	1/2"	69433	69547
	3/4"	69434	69548
	1"	69435	69549
	1-1/4"	69436	69550
	1-1/2"	69437	69551
	2"	69438	69552
	2-1/2"	69439	69553
	3"	69440	69554
	4"	69441	69555
5"	69442	69556	
6"	69443	69557	
5/8"	5/8"	69444	69558
	3/4"	69445	69559
	1"	69446	69560
	1-1/4"	69447	69561
	1-1/2"	69448	69562
	2"	69449	69563
	2-1/2"	69450	69564
	3"	69451	69565
	4"	69452	69566
5"	69453	69567	
6"	69454	69568	

402 High Carbon, High Chromium Ground Flat Stock			
Thickness	Width	18" Length	36" Length
3/4"	3/4"	69455	69569
	1"	69456	69570
	1-1/4"	69457	69571
	1-1/2"	69458	69572
	2"	69459	69573
	2-1/2"	69460	69574
	3"	69461	69575
	4"	69462	69576
	5"	69463	69577
6"	69464	69578	
7/8"	7/8"	69465	69579
	1"	69466	69580
	1-1/2"	69467	69581
	2"	69468	69582
	3"	69469	69583
	4"	69470	69584
1"	6"	69471	69585
	1"	69472	69586
	1-1/4"	69473	69587
	1-1/2"	69474	69588
	2"	69475	69589
	2-1/2"	69476	69590
	3"	69477	69591
	4"	69478	69592
	5"	69479	69593
6"	69480	69594	

FLAT STOCK AND DRILL ROD

Sizes other than listed priced on application



Check out our website for interactive features at [starrett.com](http://starrett.com)



# PRECISION GROUND FLAT STOCK

## 498 LOW CARBON PRECISION GROUND FLAT STOCK

- Substantial cost reductions over tool steel ground flat stock. There are savings up to 60% because this is a low carbon steel and furnished in 24" lengths. This means that you get one-third more steel at less cost.
- Ideal for a wide variety of parts that don't require more expensive heat treated steels, such as stripper plates, jigs, fixtures, machine and component parts, templates, etc.
- This steel can be carburized or case hardened. After hardening, its physical properties, especially tensile strength, yield point, and Brinell hardness, are substantially higher.
- **NOTE:** Thicknesses of 1/8" and under are made from AISI 1010 material
- Starrett uses its own ground flat stock for many of its precision tool parts



### SPECIFICATIONS

Furnished in 24" lengths, ground straight and parallel.

### ANALYSIS

Starrett 498 Low Carbon Precision Ground Flat Stock is a .20 carbon fine-grained, milled steel, which can be carburized or case hardened. Very similar to AISI 1018.

### HEAT TREATMENT

For many applications, stock can be used unhardened. However, if surface hardening is desired, it can be carburized or case hardened. If carburized, a case of 1/32" will be obtained if the steel is held in carburizing salt at 1700° F for three hours.

## 498 LOW CARBON PRECISION GROUND FLAT STOCK

498 Low Carbon Precision Ground Flat Stock		
Thickness	Width	24" Length
1/16"	1/2"	54866
	3/4"	54867
	1"	54868
	1-1/4"	54869
	1-1/2"	54870
	2"	54871
	2-1/2"	54872
	3"	54873
	3-1/2"	54874
	4"	54875
	5"	54876
	6"	54877
3/32"	1/2"	54881
	3/4"	54882
	1"	54883
	1-1/4"	54884
	1-1/2"	54885
	2"	54886
	2-1/2"	54887
	3"	54888
	3-1/2"	58285
	4"	54889

498 Low Carbon Precision Ground Flat Stock		
Thickness	Width	24" Length
3/32"	5"	54890
	6"	54891
	8"	54892
	10"	58286
	12"	58287
	1/8"	1/2"
3/4"		54894
1"		54895
1-1/4"		54896
1-1/2"		54897
2"		54898
2-1/2"		54899
3"		54900
3-1/2"		54901
4"		54902
5"		54903
5/32"		6"
	8"	54905
	10"	54906
	12"	54907
	1/2"	54908
	3/4"	54909
	1"	54910
	1-1/4"	54911
	1-1/2"	54912

498 Low Carbon Precision Ground Flat Stock			
Thickness	Width	24" Length	
5/32"	2"	54913	
	2-1/2"	54914	
	3"	54915	
	3-1/2"	58290	
	4"	54917	
	5"	54918	
	6"	54919	
	8"	58291	
	10"	58292	
	12"	58293	
	3/16"	3/16"	57247
		1/2"	54921
3/4"		54922	
1"		54923	
1-1/4"		54924	
1-1/2"		54925	
2"		54926	
2-1/2"		54927	
3"		54928	
3-1/2"		54929	
4"		54930	
5"		54931	
6"	54932		
8"	54933		
10"	54934		
12"	57248		

Sizes other than listed priced on application



## 498 Low Carbon Precision Ground Flat Stock

498 Low Carbon Precision Ground Flat Stock		
Thickness	Width	24" Length
1/4"	1/4"	57249
	1/2"	54935
	3/4"	54936
	1"	54937
	1-1/4"	54938
	1-1/2"	54939
	2"	54940
	2-1/2"	54941
	3"	54942
	3-1/2"	54943
	4"	54944
	5"	54945
	6"	54946
8"	54947	
10"	54948	
12"	54949	
5/16"	5/16"	57250
	1/2"	54950
	3/4"	54951
	1"	54952
	1-1/4"	54953
	1-1/2"	54954
	2"	54955
	2-1/2"	54956
	3"	54957
	3-1/2"	54958
	4"	54959
	5"	54960
	6"	54961
8"	54962	
10"	57251	
12"	57252	
3/8"	3/8"	54964
	1/2"	54965
	3/4"	54966
	1"	54967
	1-1/4"	54968
	1-1/2"	54969
	2"	54970
	2-1/2"	54971
	3"	54972
	3-1/2"	54973
	4"	54974
	5"	54975
	6"	54976
7"	54977	
8"	54978	
9"	54979	
10"	54980	
12"	54981	
7/16"	7/16"	54982

498 Low Carbon Precision Ground Flat Stock		
Thickness	Width	24" Length
1/2"	1/2"	54983
	3/4"	54984
	1"	54985
	1-1/4"	54986
	1-1/2"	54987
	2"	54988
	2-1/2"	54989
	3"	54990
	3-1/2"	54991
	4"	54992
	5"	54993
	6"	54994
	7"	54995
8"	54996	
9"	54997	
10"	54998	
12"	54999	
9/16"	9/16"	55000
5/8"	5/8"	55001
	3/4"	55002
	1"	55003
	1-1/4"	55004
	1-1/2"	55005
	2"	55006
	2-1/2"	55007
	3"	55008
	3-1/2"	55009
	4"	55010
	5"	55011
	6"	55012
	7"	55013
8"	55014	
9"	55015	
10"	55016	
12"	57253	
3/4"	3/4"	55017
	1"	55018
	1-1/4"	55019
	1-1/2"	55020
	2"	55021
	2-1/2"	55022
	3"	55023
	3-1/2"	55024
	4"	55025
	5"	55026
	6"	55027
	7"	57254
	8"	55028
9"	55029	
10"	55030	
12"	55031	

498 Low Carbon Precision Ground Flat Stock		
Thickness	Width	24" Length
7/8"	7/8"	55032
	1"	55033
	1-1/4"	55034
	1-1/2"	55035
	2"	55036
	2-1/2"	55037
	3"	55038
1"	3-1/2"	57255
	4"	55039
	6"	55040
	1"	55041
	1-1/4"	55042
	1-1/2"	55043
	2"	55044
	2-1/2"	55045
	3"	55046
	3-1/2"	55047
	4"	55048
	5"	55049
	6"	55050
7"	57256	
8"	55051	
9"	55052	
10"	55053	
12"	55054	
1-1/8"	1-1/8"	58288
1-1/4"	1-1/4"	55055
	1-1/2"	55056
	2"	55057
	2-1/2"	55058
	3"	55059
	4"	55060
	5"	55061
6"	55062	
8"	55063	
10"	55065	
12"	57257	
1-1/2"	1-1/2"	55066
	2"	55067
	2-1/2"	55068
	3"	55069
	3-1/2"	55070
	4"	55071
	5"	55072
6"	55073	
8"	55074	
10"	55075	
2"	2"	55076
2-1/2"	2-1/2"	58289

FLAT STOCK AND DRILL ROD

Sizes other than listed priced on application



Check out our website for interactive features at [starrett.com](http://starrett.com)

