



FIXING, FASTENING & SUPPORT PRODUCTS

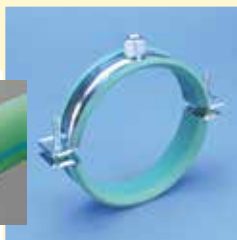
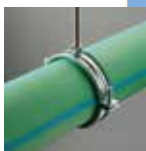
FOR HVAC, PLUMBING,
REFRIGERATION, FIRE PROTECTION
& SEISMIC APPLICATIONS



Split Ring Hangers

CADDY MACROFIX PLUS LF Low-Friction

- Includes easy closing mechanism
- Age resistant lining designed specifically for plastic pipe applications
- Low-friction properties allow for expansion, contraction and easy sliding of pipe
- Conforms with Manufacturers Standardization Society (MSS) SP-58 (Type 12)



Material: Steel, EPDM-SBR Rubber

Finish: Electrogalvanized

Color: Green

Temperature: -58 to 230 °F

Part Number	Description	F ↓
4300050EG	0.787" OD, 1/2" Pipe, 20 mm Plastic Pipe	250 lb
4300075EG	0.984" OD, 3/4" Pipe, 25 mm Plastic Pipe	250 lb
4300100EG	1.26" OD, 1" Pipe, 32 mm Plastic Pipe	250 lb
4300125EG	1.575" OD, 1 1/4" Pipe, 40 mm Plastic Pipe	250 lb
4300150EG	1.902" OD, 1 1/2" Pipe, 50 mm Plastic Pipe	380 lb
4300200EG	2.374" OD, 2" Pipe, 63 mm Plastic Pipe	380 lb
4300250EG	2.874" OD, 2 1/2" Pipe, 75 mm Plastic Pipe	380 lb
4300300EG	3.5" OD, 3" Pipe, 90 mm Plastic Pipe	380 lb
4300350EG	4" OD, 3 1/2" Pipe, 110 mm Plastic Pipe	440 lb
4300400EG	4.331" OD, 4" Pipe, 125 mm Plastic Pipe	440 lb
4300500EG	5.512" OD, 5" Pipe	440 lb

Lining is EPDM rubber.



Split Ring Hangers

CADDY MACROFIX PLUS NI EZ with Easy Closure

- Contains easy closing mechanism
- Plastic washers help prevent crushing the CPVC or plastic pipe and assure a floating fit
- Flared edges and specially designed welding area help protect CPVC piping
- Suitable for 3/4" - 2" (20 - 50 DN) steel sprinkler pipe
- Conforms with Manufacturers Standardization Society (MSS) SP-58 (Type 12)



Material: Steel
Finish: Electrogalvanized



Part Number	Description	F ↓	Certifications
4290050EG	1/2" Pipe, 0.787"–0.84" OD, 3/8" Rod	250 lb	cULus
4290075EG	3/4" Pipe, 0.984"–1.059" OD, 3/8" Rod	250 lb	cULus, FM
4290100EG	1" Pipe, 1.26"–1.327" OD, 3/8" Rod	250 lb	cULus, FM
4290125EG	1 1/4" Pipe, 1.575"–1.669" OD, 3/8" Rod	250 lb	cULus, FM
4290150EG	1 1/2" Pipe, 1.9"–1.969" OD, 3/8" Rod	380 lb	cULus, FM
4290200EG	2" Pipe, 2.374"–2.48" OD, 3/8" Rod	380 lb	cULus, FM
4290250EG	2 1/2" Pipe, 2.875"–2.996" OD, 3/8" Rod	380 lb	cULus
4290300EG	3" Pipe, 3.5"–3.543" OD, 3/8" Rod	380 lb	cULus
4290350EG	3 1/2" Pipe, 4"–4.106" OD, 3/8" Rod	440 lb	–
4290400EG	4" Pipe, 4.331"–4.5" OD, 3/8" Rod	440 lb	cULus
4290500EG	5" Pipe, 5.5"–5.563" OD, 3/8" Rod	440 lb	–

BH Bell Hanger Pipe Clamp

- Mounting screw is recessed and has a pierce-point to penetrate metal studs



Material: Steel
Finish: Copper Electroplated

Part Number	Description
BH0050CP	1/2" Pipe, 0.84" OD
BH0075CP	3/4" Pipe, 1.05" OD
BH0100CP	1" Pipe, 1.315" OD

