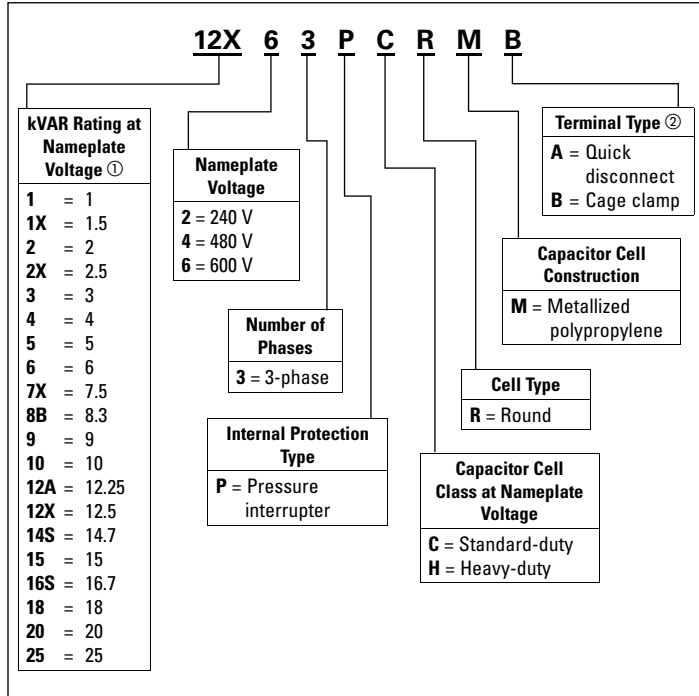


Table 1. Capacitor Cell Catalog Numbering System



① Ratings are based on 60 Hz operation.

② Consult factory for terminal type on older cells.

Table 2. Heavy-Duty Capacitor Cell Chart

Nameplate Voltage	kVAR	Dimensions in Inches (mm)		Internal Voltage Rating	Weight in Lbs (kg)	Catalog Number
		D	H			
240	12.5	3.5 (89.5)	15.3 (388.0)	360	3.3 (1.5)	12X23PHRMB
480	15.0	3.5 (89.5)	12.3 (313.0)	525	2.6 (1.2)	1543PHRMB
480	16.7	3.5 (89.5)	15.3 (388.0)	600	3.3 (1.5)	16S43PHRMB
480	20.0	3.5 (89.5)	15.3 (388.0)	525	3.3 (1.5)	2043PHRMB
480	25.0	3.5 (89.5)	15.3 (388.0)	525	3.3 (1.5)	2543PHRMB
600	12.3	3.5 (89.5)	12.3 (313.0)	660	2.6 (1.2)	12A63PHRMB
600	14.7	3.5 (89.5)	15.3 (388.0)	660	3.3 (1.5)	14S63PHRMB
600	16.7	3.5 (89.5)	15.3 (388.0)	660	3.3 (1.5)	16S63PHRMB

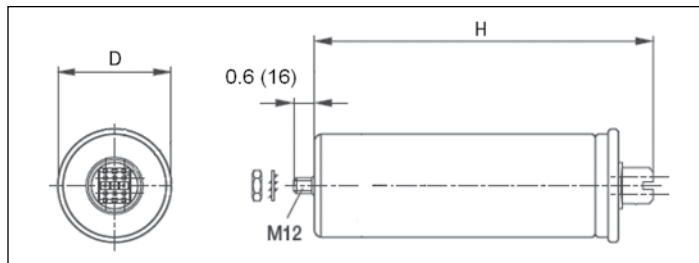


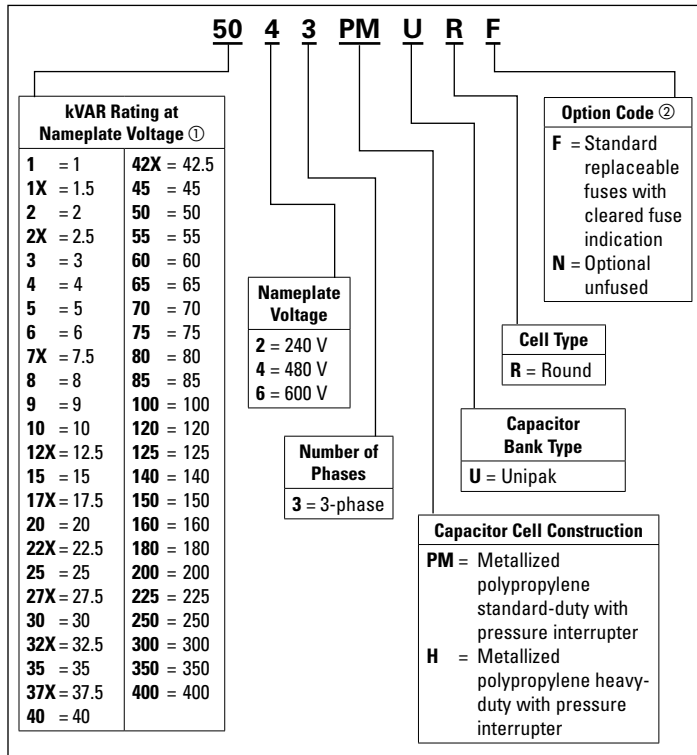
Figure 1. Capacitor Cell Dimensions in Inches (mm)

Table 3. Capacitor Cell Chart

Voltage	kVAR	Dimensions in Inches (mm)		Weight in Lbs (kg)	Catalog Number
		D	H		
240	1.5	3.1 (79.5)	7.9 (200.0)	1.1 (0.5)	643PCRMB
240	2	3.1 (79.5)	9.4 (238.0)	1.3 (0.6)	8B43PCRMB
240	2.5	3.1 (79.5)	9.4 (238.0)	1.3 (0.6)	1043PCRMB
240	3	3.5 (89.5)	9.4 (238.0)	1.8 (0.8)	12X43PCRMB
240	4	3.1 (79.5)	7.9 (200.0)	1.1 (0.5)	423PCRMB
240	5	3.5 (89.5)	12.3 (313.0)	2.6 (1.2)	2043PCRMB
240	6.3	3.1 (79.5)	9.4 (238.0)	1.3 (0.6)	6B23PCRMB
240	7.5	3.1 (79.5)	9.4 (238.0)	1.3 (0.6)	7X23PCRMB
240	8.3	3.5 (89.5)	9.4 (238.0)	3.3 (1.5)	8B23PCRMB
240	10	3.5 (89.5)	9.4 (238.0)	2.0 (0.9)	1023PCRMB
240	12.5	3.5 (89.5)	12.3 (313.0)	2.6 (1.2)	12X23PCRMB
240	15	3.5 (89.5)	12.3 (313.0)	2.6 (1.2)	1523PCRMB
480	1.5	2.1 (53.0)	5.0 (125.8)	0.7 (0.3)	1X43PCRMA
480	2	2.5 (63.5)	5.5 (140.8)	0.9 (0.4)	243PCRMA
480	2.5	2.5 (63.5)	5.5 (140.8)	0.9 (0.4)	2X43PCRMA
480	3	2.5 (63.5)	5.5 (140.8)	0.9 (0.4)	343PCRMA
480	4	2.5 (63.5)	6.5 (165.8)	0.9 (0.4)	443PCRMA
480	5	2.5 (63.5)	6.5 (165.8)	0.9 (0.4)	543PCRMA
480	6	3.1 (79.5)	7.9 (200.0)	1.1 (0.5)	643PCRMB
480	7.5	3.1 (79.5)	7.9 (200.0)	1.1 (0.5)	7X43PCRMB
480	8.3	3.1 (79.5)	9.4 (238.0)	1.3 (0.6)	8B43PCRMB
480	9	3.1 (79.5)	9.4 (238.0)	1.3 (0.6)	943PCRMB
480	10	3.1 (79.5)	9.4 (238.0)	1.3 (0.6)	1043PCRMB
480	12.5	3.5 (89.5)	9.4 (238.0)	1.8 (0.8)	12X43PCRMB
480	15	3.5 (89.5)	9.4 (238.0)	1.8 (0.8)	1543PCRMB
480	18	3.5 (89.5)	12.3 (313.0)	2.6 (1.2)	1843PCRMB
480	20	3.5 (89.5)	12.3 (313.0)	2.6 (1.2)	2043PCRMB
480	25	3.5 (89.5)	12.3 (313.0)	2.6 (1.2)	2543PCRMB
600	5	3.1 (79.5)	9.4 (238.0)	1.3 (0.6)	563PCRMB
600	7.5	3.1 (79.5)	9.4 (238.0)	1.3 (0.6)	7X63PCRMB
600	10	3.1 (79.5)	9.4 (238.0)	1.3 (0.6)	1063PCRMB
600	12.5	3.5 (89.5)	9.4 (238.0)	1.8 (0.8)	12X63PCRMB
600	15	3.5 (89.5)	12.3 (313.0)	2.6 (1.2)	1563PCRMB
600	17.5	3.5 (89.5)	12.3 (313.0)	2.6 (1.2)	17X63PCRMB
600	20	3.5 (89.5)	12.3 (313.0)	3.3 (1.5)	2063PCRMB
600	25	3.5 (89.5)	15.3 (388.0)	3.3 (1.5)	2563PCRMB

Note: kVAR rating standard. Standard kVAR tolerance is 0% to +5%. Part number shown is for three-phase units. Up to 5 kVAR at 480 V—quick disconnect terminals are standard. Above 5 kVAR at 480 V (and on all other voltages)—cage clamp terminals are standard.

Table 7. Unipak Capacitor Bank Catalog Numbering System



① Ratings are based on 60 Hz operation.

② Standard units have replaceable fuses with cleared fuse indication. Unfused units are intended for use with upstream overcurrent protection, as in the case of motor-connected capacitors.

Table 8. 240 Vac Unipak Selection Chart

kVAR	Rated Current (Amperes)	Enclosure	Shipping Weight in Lbs (kg)	Catalog Number
1	2.4	A1	18 (8)	123PMURF
1.5	3.6	A1	18 (8)	1X23PMURF
2	4.8	A1	19 (9)	223PMURF
2.5	6	A1	19 (9)	2X23PMURF
3	7.2	A1	19 (9)	323PMURF
4	9.6	A1	20 (9)	423PMURF
5	12	A2	29 (13)	523PMURF
6	14.4	A2	29 (13)	623PMURF
7.5	18	A2	30 (14)	7X23PMURF
8	19.2	A2	31 (14)	823PMURF
10	24	A2	31 (14)	1023PMURF
12.5	30	A2	32 (14)	12X23PMURF
15	36	A2	33 (15)	1523PMURF
17.5	42	B1	44 (20)	17X23PMURF
20	48	B1	45 (20)	2023PMURF
22.5	54	B1	46 (21)	22X23PMURF
25	60	B1	46 (21)	2523PMURF
30	72	B1	47 (21)	3023PMURF
32.5	78	C1	47 (22)	32X23PMURF
35	84	C1	48 (22)	3523PMURF
37.5	90	C1	60 (27)	37X23PMURF
40	96	C1	64 (29)	4023PMURF
42.5	102	C1	65 (30)	42X23PMURF
45	108	C1	66 (30)	4523PMURF
50	120	C1	68 (31)	5023PMURF
60	144	C1	69 (31)	6023PMURF
70	168	C2	99 (45)	7023PMURF
75	180	C2	100 (46)	7523PMURF
80	192	C2	101 (46)	8023PMURF
90	216	C2	103 (47)	9023PMURF
100	240	D1	104 (47)	10023PMURF
120	288	D1	133 (60)	12023PMURF
140	336	E1	137 (62)	14023PMURF
150	360	E1	140 (64)	15023PMURF
160	384	E1	175 (80)	16023PMURF
180	432	E1	182 (83)	18023PMURF
200	480	E1	189 (86)	20023PMURF

Notes: Multiply the 240 Vac kVAR rating by 0.75 to calculate the kVAR value at 208 Vac. For dimensional information, refer to **Pages 12 to 15**.

Unfused units available up to 50 kVAR at 240 V.

Ratings based on 60 Hz operation.

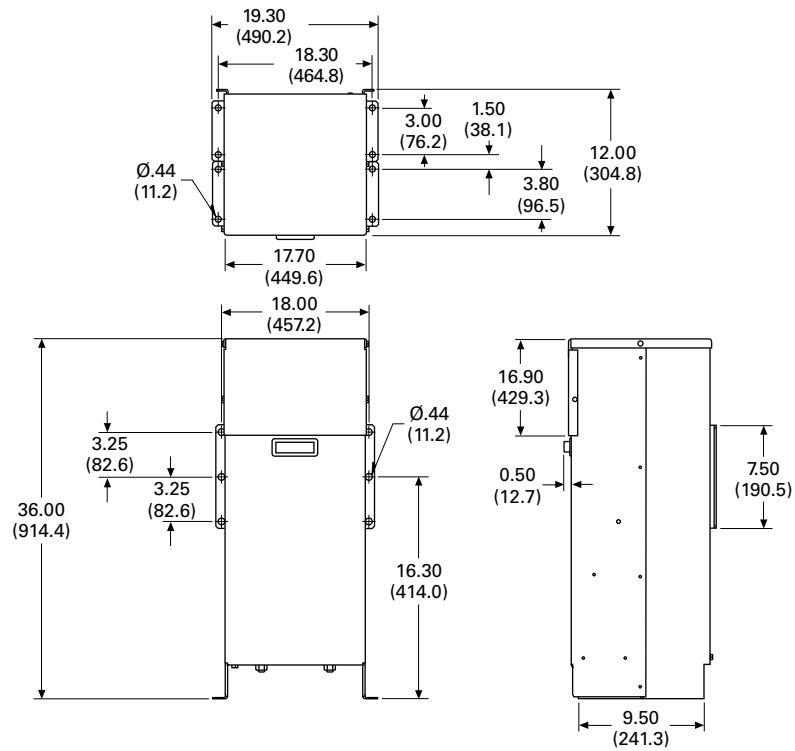


Figure 9. Case C2

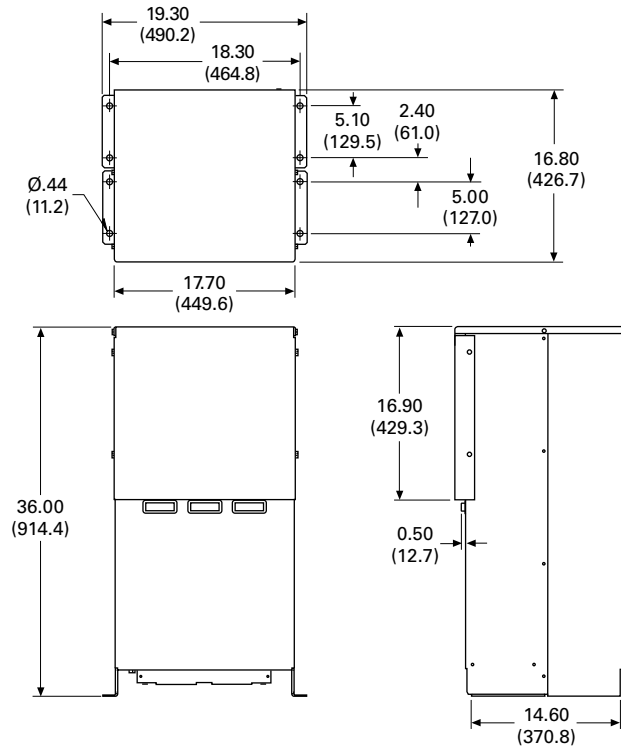


Figure 10. Case D1

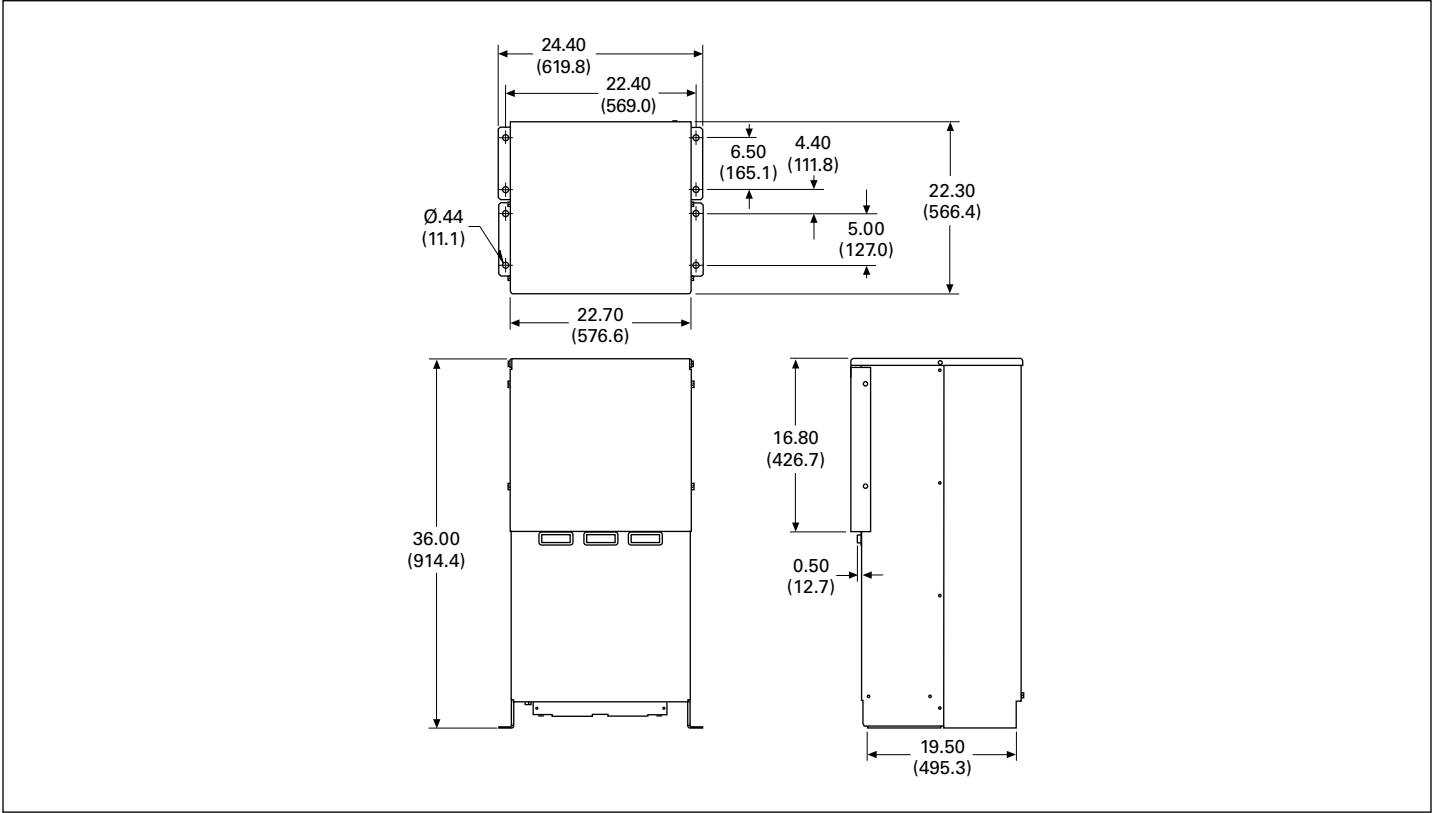


Figure 11. Case E1