

LIGHT SECTION SENSORS WITH SMARTRUNNER TECHNOLOGY

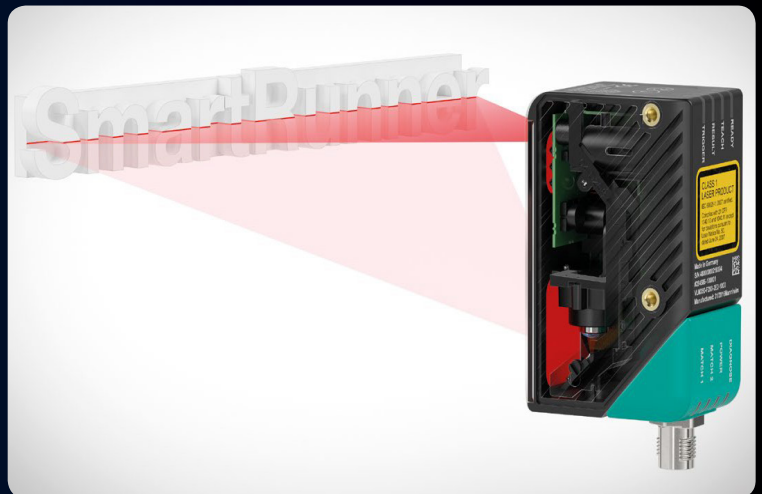
SmartRunner technology is a unique combination of light section technology and a 2-D vision sensor with integrated LEDs. The result is ready-to-use, plug & play light section sensors that offer a variety of technical features.



SMARTRUNNER TECHNOLOGY:

The proven light section technology is based on the triangulation principle and allows versatile detection tasks, such as precise detection of height profiles and edge lines. Light section sensors are highly precise, insensitive to extraneous light, and function independently of target objects' color and surface texture. The integrated camera function, including LED lighting, streamlines parameterization with Data Matrix control codes. Additionally, recording of error images is possible, allowing personnel to intervene quickly and efficiently in case of disruptions.

The new light section sensors are optimized for specific tasks. Get to know the first representatives of the new SmartRunner product family.

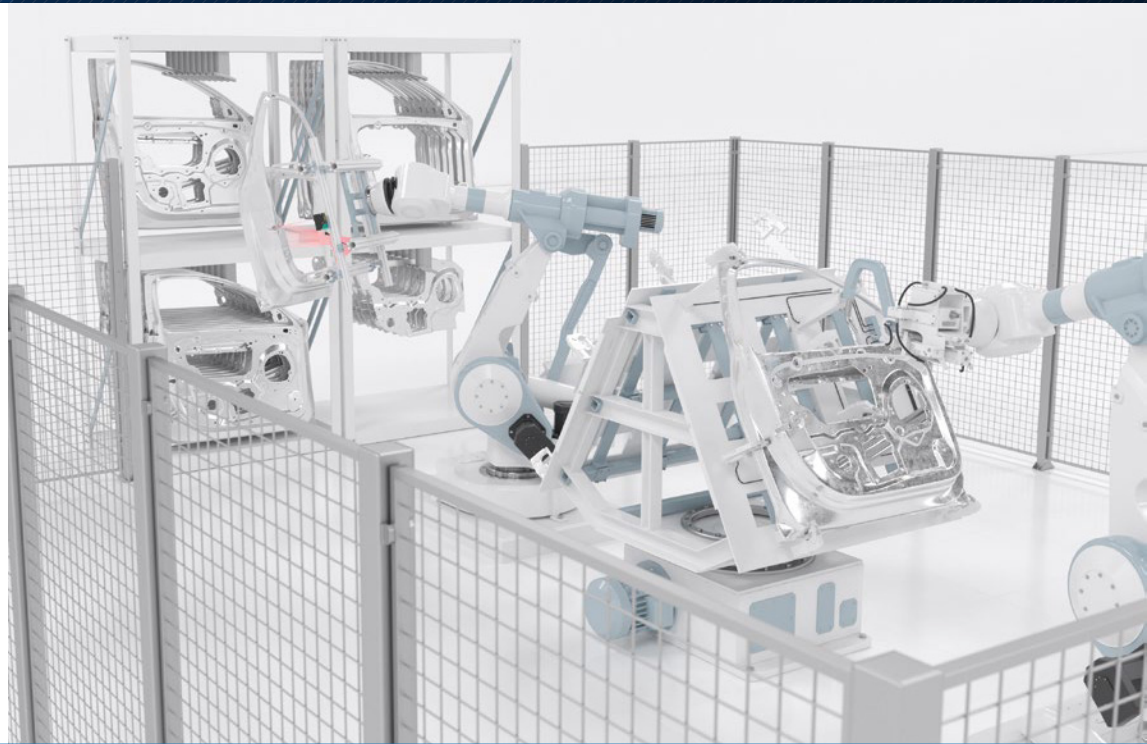


ONLINE • CATALOG • ONE-ON-ONE
Our Expertise. Your Advantage®
carltonbates.com | 866.600.6040



CBC
CARLTON-BATES COMPANY®
A SUBSIDIARY OF WESCO DISTRIBUTION, INC.

PEPPERL+FUCHS



Unique Engineering— Unique Opportunities

Based on an innovative combination of light section technology and 2-D vision, SmartRunner from Pepperl+Fuchs is a family of high-precision sensors tailored to the needs of specific applications. These innovative sensors transform complex profile data into easy-to-process digital signals, making integration into the overall process incredibly simple.

Highlights

- » Unique combination of light section technology and 2-D vision sensor with integrated LEDs opens up a variety of new applications
- » Application-specific sensors—preconfigured and calibrated based on the application
- » Transformation of complex measuring data into simple digital signals for fast and easy integration
- » Easy installation due to parameterization via Data Matrix control codes or teach-in
- » Light section technology provides reliable measuring on any material regardless of surface contour or color

System Changeover— Quicker and Easier Than Ever

Being able to adapt quickly to changing application conditions is becoming more and more important. As a result, processes must be flexible to accommodate modified vehicle types or adjustments in packaging quantities. This normally requires repositioning and reparameterization of sensors—not difficult with the SmartRunner Matcher. Via teach-in or Data Matrix control codes, the sensor can be quickly adapted to new applications.



ONLINE • CATALOG • ONE-ON-ONE
Our Expertise. Your Advantage®
carltonbates.com | 866.600.6040



CBC
CARLTON-BATES COMPANY®
A SUBSIDIARY OF WESCO DISTRIBUTION, INC.

PEPPERL+FUCHS